

# **BALDOR**® • ***RELIANCE***

## **Product Information Packet**

# **IDCSWDM3714T**

**10HP,1770RPM,3PH,60HZ,215TC,3756M,TEFC,F**

Part Detail							
Revision:	V	Status:	PRD/A	Change #:		Proprietary:	No
Type:	AC	Prod. Type:	3756M	Elec. Spec:	37WGT857	CD Diagram:	CD0180
Enclosure:	TEFC	Mfg Plant:		Mech. Spec:	37H885	Layout:	37LYH885
Frame:	215TC	Mounting:	F1	Poles:	04	Created Date:	10-25-2006
Base:	RG	Rotation:	R	Insulation:	H	Eff. Date:	05-26-2016
Leads:	9#14					Replaced By:	
Literature:		Elec. Diagram:					

Nameplate NP1608L	
CAT NO	IDCSWDM3714T
SPEC.	37H885T857G1
FRAME	215TC HP 10 TE
VOLTS	230/460
MAG CUR	11/5.5 FLA 25/12.5
RPM	1770 RPM MAX 6000
HZ	60 PH 3 CLASS H
SER.F.	1.00 DES B SL HZ 1
NEMA-NOM-EFF	92.4 WK2 1.38
BLWR V	PH HZ A
RATING	40C AMB-CONT
DE BRG	6307 ODE BRG 6206
CC	010A SN

Parts List		
Part Number	Description	Quantity
SA151113	SA 37H885T857G1	1.000 EA
RA139945	RA 37H885T857G1	1.000 EA
37FN3002B01	EXFN, PLASTIC, 7.50 OD, 1.155 ID	1.000 EA
HW3200S01	EYEBOLT 3/8-16 X3/4 S.S. TDR #35988	1.000 EA
37CB3000A40MU	K.O. BOX-MODEL 37 NEMA 213-5 .75 NPT LEA	1.000 EA
37GS1025	37 MOLDED GASKET W/LIP, LEAD SEAL	1.000 EA
51XW2520A12	.25-20 X .75, TAPTITE II, HEX WSHR SLTD	2.000 EA
HA5027A04	HA4054 T-DRAIN X2 BAGGED	1.000 EA
11XW1032G06	10-32 X .38, TAPTITE II, HEX WSHR SLTD U	1.000 EA
HW3001B01	BRASS CUP WASHER, FOR #8 SCREW	1.000 EA
37EP3101A49MU	FR EP 37 L & M TEFC (FOR S.P. #9D)	1.000 EA
HW4500A33	1/8 NPT STAINLESS,HOLO-KROME #13002,PRES	3.000 EA
HW5100A06	W2420-025 WVY WSHR (WB)	1.000 EA
37EP3300A25MU	FACE MT EP-ENCL-307 BRG-213TC-215TC NO G	1.000 EA
HW4500A33	1/8 NPT STAINLESS,HOLO-KROME #13002,PRES	3.000 EA
HW4606A04	JM CLIPPER/SEAL (LWE-1376-2125-AL45)	1.000 EA
10XN2520S30	1/4-20 X 1 7/8 HEX HEAD SS	4.000 EA
XY3118S12	5/16-18 HEX NUT, STAINLESS STEEL	4.000 EA
51XB1214A20	12-14X1.25 HXWSSLD SERTYB	1.000 EA
37FH4000A45	STAINLESS FAN COVER, NO GREASER SLOT (FO	1.000 EA
11XW1032S06	10-32 X .38, TAPTITE II, HEX WSHR SLTD U	3.000 EA
36CB4517	LIPPED CB LID #304 STAINLESS - CLEANED	1.000 EA
37GS3010	1/16"WHITE LID GASKET	1.000 EA
59XW0832S07	TAPTITE II,HEX WSHR UNSLTD SER,410 S.S.,	4.000 EA

<b>Parts List (continued)</b>		
<b>Part Number</b>	<b>Description</b>	<b>Quantity</b>
HW4600B74	V-RING SLINGER 1.125 X 1.445 X .24 VITON	1.000 EA
HW2502F21	#303 SS,SQ KEY 5/16 X 2.375	1.000 EA
HA7000A02	KEY RETAINER RING, 1 1/8 DIA, 1 3/8 DIA	1.000 EA
MJ5001A02	732 CL SEALANT 3 OZ DIXIE BEARING 289100	0.001 EA
85XU0407S04	4X1/4 U DRIVE PIN STAINLESS	2.000 EA
LB1115N	LABEL,LIFTING DEVICE (ON ROLLS)	1.000 EA
LB1164	LABEL,WARNING AND DRAIN	1.000 EA
MJ1000A02	GREASE, POLYREX EM EXXON (USe 4824-15A)	0.050 LB
HA3104S25	THRUBOLT-5/16-18X14.75 SS	4.000 EA
LC0181	CONNECTION LABEL	1.000 EA
NP1608L	SS WD INV UL CSA CC REV MTG	1.000 EA
37PA1039	PALLET PACK GRP, PRINT PK1026A06	1.000 EA
MN416A01	TAG-INSTAL-MAINT no wire (1200/bx) 11/14	1.000 EA

AC Induction Motor Performance Data



**AC Induction Motor Performance Data**  
Record # 37139  
Typical performance - not guaranteed values

<b>Winding:</b> 37WGT857	<b>Type:</b> 3756M	<b>Enclosure:</b> TEFC
--------------------------	--------------------	------------------------

Nameplate Data			General Characteristics at 460 V, 60 Hz: High Volt Connection		
Rated Output (HP)	10		Full Load Torque	29.9 LB-FT	
Volts	230/460		Start Configuration	DOL	
Full Load Amps	25/12.5		Break Down Torque	102 LB-FT	
R.P.M.	1770		Pull-Up Torque	53.6 LB-FT	
Hz	60	Phase	Locked-rotor Torque	74.2 LB-FT	
NEMA Design Code	B	KVA Code	Starting Current	105 Amps	
Service Factor	1		No-load Current	5.44 Amps	
NEMA Nom. Eff.	92.4	P.F.	Line-line Res. @ 25°C.	0.799 Ohms	
Rating - Duty	40C AMB-CONT		Temp. Rise @ Rated Load	76°C	
S.F. Amps			Temp. Rise @ S.F. Load		

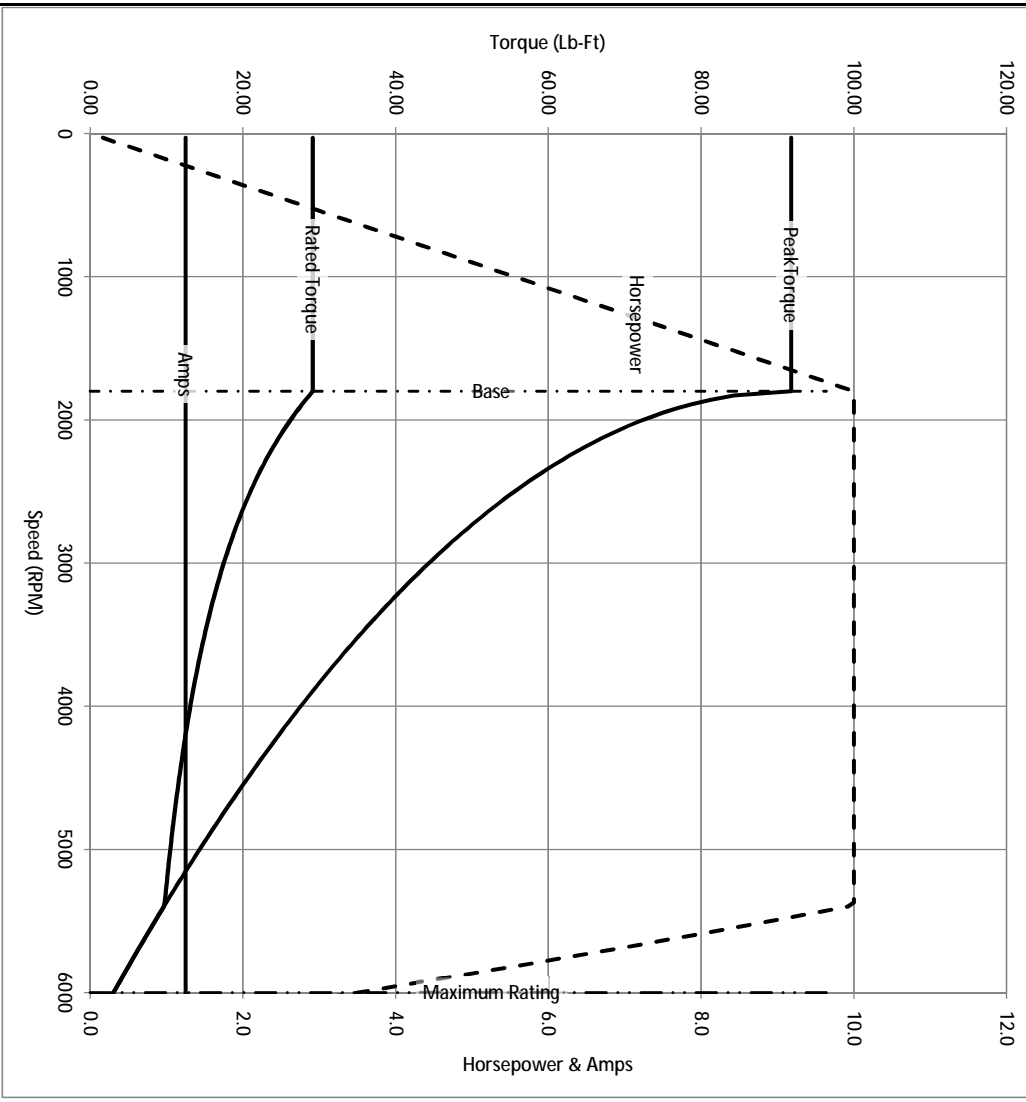
Load Characteristics at 460 Volts, 60 Hz, 10 HP

% of Rated Load	25	50	75	100	125	150	S.F.
Power Factor	43	65	76	81	83	84	
Efficiency	88	92.6	93.3	93	92.4	91.5	
Speed	1793	1786	1778	1770	1762	1752	
Line Amperes	6.18	7.79	10	12.5	15.3	18.3	

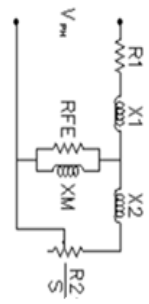
Baldor Electric Company Fort Smith, Arkansas



Catalog	IDCSWDM3714T	NP VOLTS	230/460	ENCLOSURE	TEFC	WYE CONN EQ CKT OHMS PER PHASE (BASE RATING, 20C)
FRAME	215TC	NP AMPS	25/12.5	Base Volts	460	R1 0.423
HP	10 HP	DUTY	Cont	Base AMPS	12.5	R2 0.300
BASE SPEED	1800	MAX SAFE RPM	6000	Slip Hz	1.00	XM1
PHASE/HZ	3/60	AMB <sup>0</sup> /INSUL	40/H	WK <sup>2</sup> (lb.-ft. <sup>2</sup> )	1.38	X2 1.876
						XM 44.849



Remarks: Calculated Data

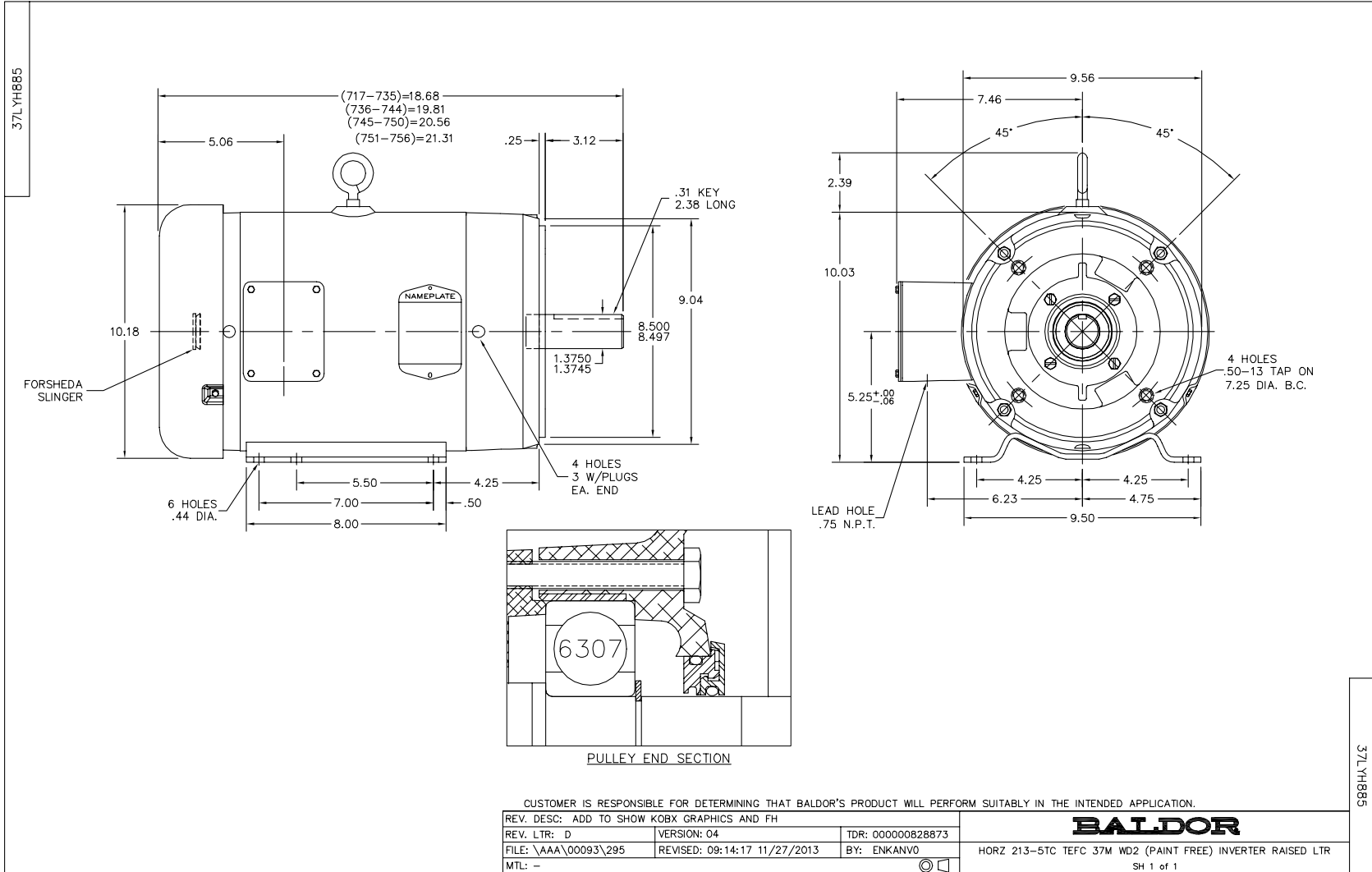


**BALDOR**  
A MEMBER OF THE ABB GROUP

DR BY ENR  
CK BY  
APP BY ENR  
DATE 3/6/2013

A-C MOTOR  
PERFORMANCE CURVES

37H885T857G1  
ISSUE DATE 3/6/2013



CD0180

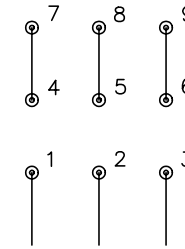


LOW VOLTAGE  
(2D)



LINE

HIGH VOLTAGE  
(1D)



LINE

NOTES:

1. INTERCHANGE ANY TWO LINE LEADS TO REVERSE ROTATION.
2. OPTIONAL THERMOSTATS ARE PROVIDED WHEN SPECIFIED.
3. ACTUAL NUMBER OF INTERNAL PARALLEL CIRCUITS MAY BE A MULTIPLE OF THOSE SHOWN ABOVE.
4. LEAD COLORS ARE OPTIONAL. LEADS MUST ALWAYS BE NUMBERED AS SHOWN.

REV. DESC: REVISE TO SHOW OPTIONAL COLORS			
REV. LTR: C	BY: JLP	REVISED: 01/21/99 2:28	TDR: 0171435
0810D0		FILE: AAA00005148	MDL: -
		MTL: -	

**BALDOR ELECTRIC Co.**

3PH, DV, 9 LEADS, DELTA CONNECTION

CD0180