

BALDOR® • RELIANCE

Product Information Packet

JL1323A

3HP,3450RPM,1PH,60HZ,56J,3535LC,OPEN,F1

Part Detail							
Revision:	AZ	Status:	PRD/A	Change #:		Proprietary:	No
Type:	AC	Prod. Type:	3535LC	Elec. Spec:	35WGY105	CD Diagram:	CD0661
Enclosure:	OPEN	Mfg Plant:		Mech. Spec:	35H992	Layout:	35LYH992
Frame:	56J	Mounting:	F1	Poles:	02	Created Date:	06-22-2007
Base:	N	Rotation:	FOS	Insulation:	B	Eff. Date:	09-28-2015
Leads:	2#14 A PH,2#18 B&J					Replaced By:	
Literature:		Elec. Diagram:					

Nameplate NP1257L	
CAT.NO.	JL1323A
SPEC.	35H992Y105
HP	3
VOLTS	230
AMP	13
RPM	3450
FRAME	56J
SER.F.	1.15
NEMA-NOM-EFF	82.5
RATING	40C AMB-CONT
CC	USABLE AT 208V 13.9
DE	6205
ENCL	OPEN
ODE	6203
SN	
CODE	K
DES	L
CL	B
PF	93
HZ	60
PH	1

Parts List		
Part Number	Description	Quantity
SA025758	SA 35H992Y105	1.000 EA
RA021808	RA 35H992Y105	1.000 EA
OC3020F12	CYL OIL CAP 20MFD/370V	1.000 EA
EC1216C06SP	ELEC CAP, 216-259 MFD, 250V, 2.06D X 4.	1.000 EA
35EP3202A02SP	FR ENDPLATE, MACH	1.000 EA
SP1033A01	INSULATOR MODEL 35 TERM PANEL	1.000 EA
11XT0832G06	8-32 X 3/8 TY 23 TAPPING	1.000 EA
SP1033A01	INSULATOR MODEL 35 TERM PANEL	1.000 EA
51XW0832A07	8-32 X .44, TAPTITE II, HEX WSHR SLTD SE	2.000 EA
85XU0407S04	4X1/4 U DRIVE PIN STAINLESS	2.000 EA
35CB3801	CAPACITOR COVER, CAST	1.000 EA
HA7010	CAPACITOR RETENTION CLAMP	1.000 EA
NS2501A02	INSULATOR, CAPACITOR BOX	1.000 EA
51XB1016A08	10-16X 1/2HXWSSLD SERTYB	2.000 EA
HW5100A03SP	WAVY WASHER (W1543-017)	1.000 EA
35EP3400A13	STD FACE MTD END PLATE OPEN NEMA 56C 05	1.000 EA
35AD2000	AIR BAFFLE	1.000 EA
60XW0632A06	6-32 X 3/8 TORX HEAD SCREW TAPTITE II	4.000 EA
51XN1032A20	10-32 X 1 1/4 HX WS SL SR	2.000 EA
35FH4500A02	DRIP COVER, STAMPED (W/ PRIMER	1.000 EA
51XW0832A07	8-32 X .44, TAPTITE II, HEX WSHR SLTD SE	2.000 EA
35CB4500SP	TERMINAL BOX LID STAMPED	1.000 EA
51XW0832A07	8-32 X .44, TAPTITE II, HEX WSHR SLTD SE	2.000 EA
LB1009N	LABEL,ROTATION DIRECTION (ON ROLLS)	1.000 EA

Parts List (continued)		
Part Number	Description	Quantity
MJ1000A02	GREASE, POLYREX EM EXXON (USe 4824-15A)	0.050 LB
MG1000G27	MED CHARCOAL METALLIC GREY 400-0096	0.017 GA
WD1000A15	3-520132-2 AMP FLAG (4M/RL NON-CANC/NON-	4.000 EA
SP5066A03	MODEL 35 TERMINAL PANEL SWITCH WITH LEAD	1.000 EA
34GS5003	FOAM SLEEVE, ID = 2 1/16" X 3 3/8"	2.000 EA
HA3100A18	THRUBOLT 10-32 X 9.250	4.000 EA
LB1118	LABEL,WARNING (ROLL LABEL)	1.000 EA
LC0369	CONNECTION LABEL, SV, FIX, W&W/O TP, TER	1.000 EA
NP1257L	ALUM UL CSA CC THERMAL REV MTG	1.000 EA
35PA1066	PKG GRP, PRINT PK1008A06	1.000 EA
PK3082	STYROFOAM CRADLE	1.000 EA

AC Induction Motor Performance Data

Record # 10140 - Typical performance - not guaranteed values

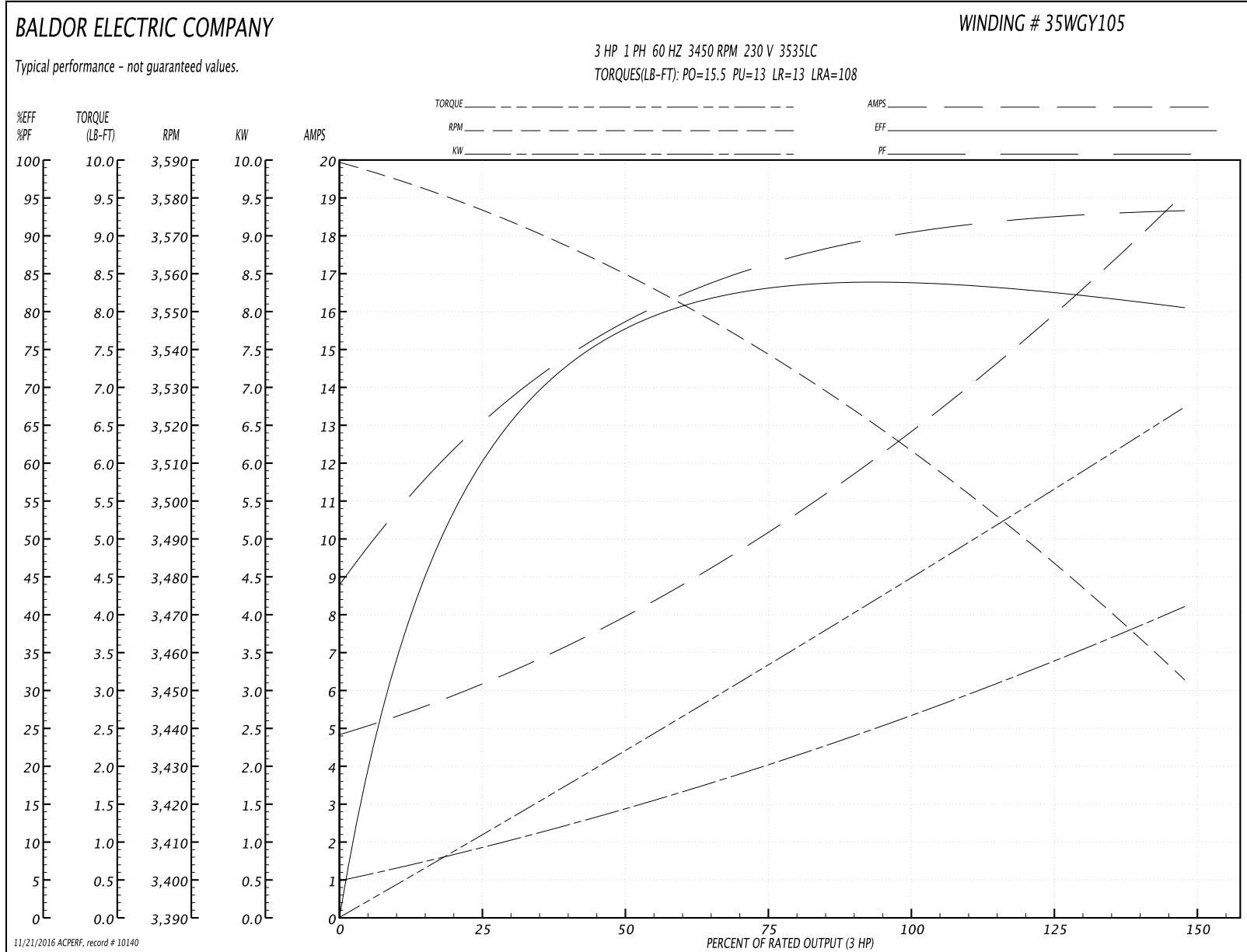
Winding: 35WGY105-R001	Type: 3535LC	Enclosure: OPEN
-------------------------------	---------------------	------------------------

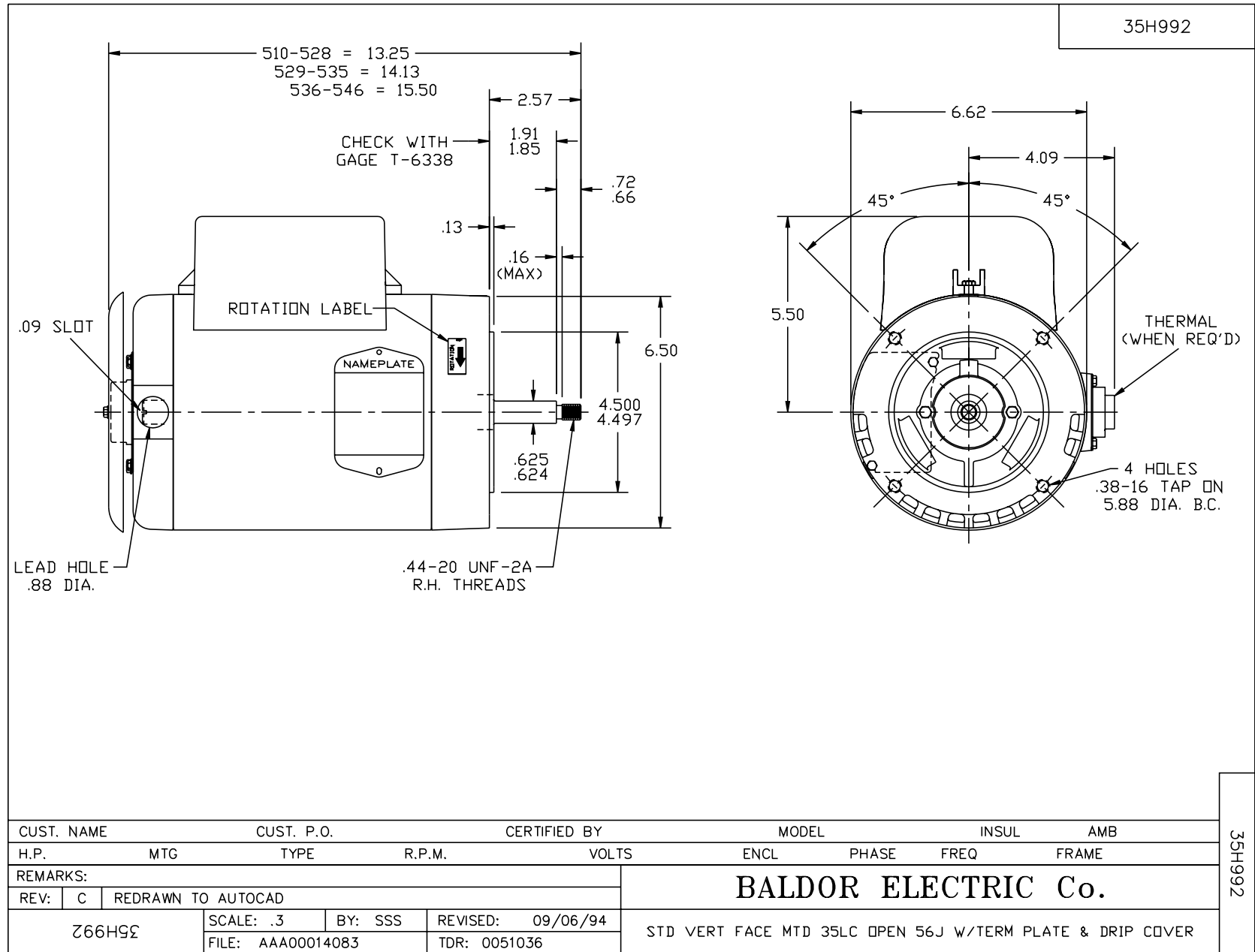
Nameplate Data				230 V, 60 Hz: Single Voltage Motor	
Rated Output (HP)	3			Full Load Torque	4.5 LB-FT
Volts	230			Start Configuration	direct on line
Full Load Amps	13			Breakdown Torque	15.5 LB-FT
R.P.M.	3450			Pull-up Torque	13 LB-FT
Hz	60	Phase	1	Locked-rotor Torque	13 LB-FT
NEMA Design Code	L	KVA Code	K	Starting Current	108 A
Service Factor (S.F.)	1.15			No-load Current	5 A
NEMA Nom. Eff.	82.5	Power Factor	93	Line-line Res. @ 25°C	0.614 Ω A Ph 2.53 Ω B Ph
Rating - Duty	40C AMB-CONT			Temp. Rise @ Rated Load	49°C
S.F. Amps				Temp. Rise @ S.F. Load	62°C

Load Characteristics 230 V, 60 Hz, 3 HP

% of Rated Load	25	50	75	100	125	150	S.F.
Power Factor	72	85	90	93	94	94	0
Efficiency	68.5	78.5	82	82.5	82.5	81	0
Speed	3578	3556	3535	3517	3487	3450	0
Line amperes	6	7.9	10.3	13	16	19	14.8

Performance Graph at 230V, 60Hz, 3.0HP Typical performance - Not guaranteed values

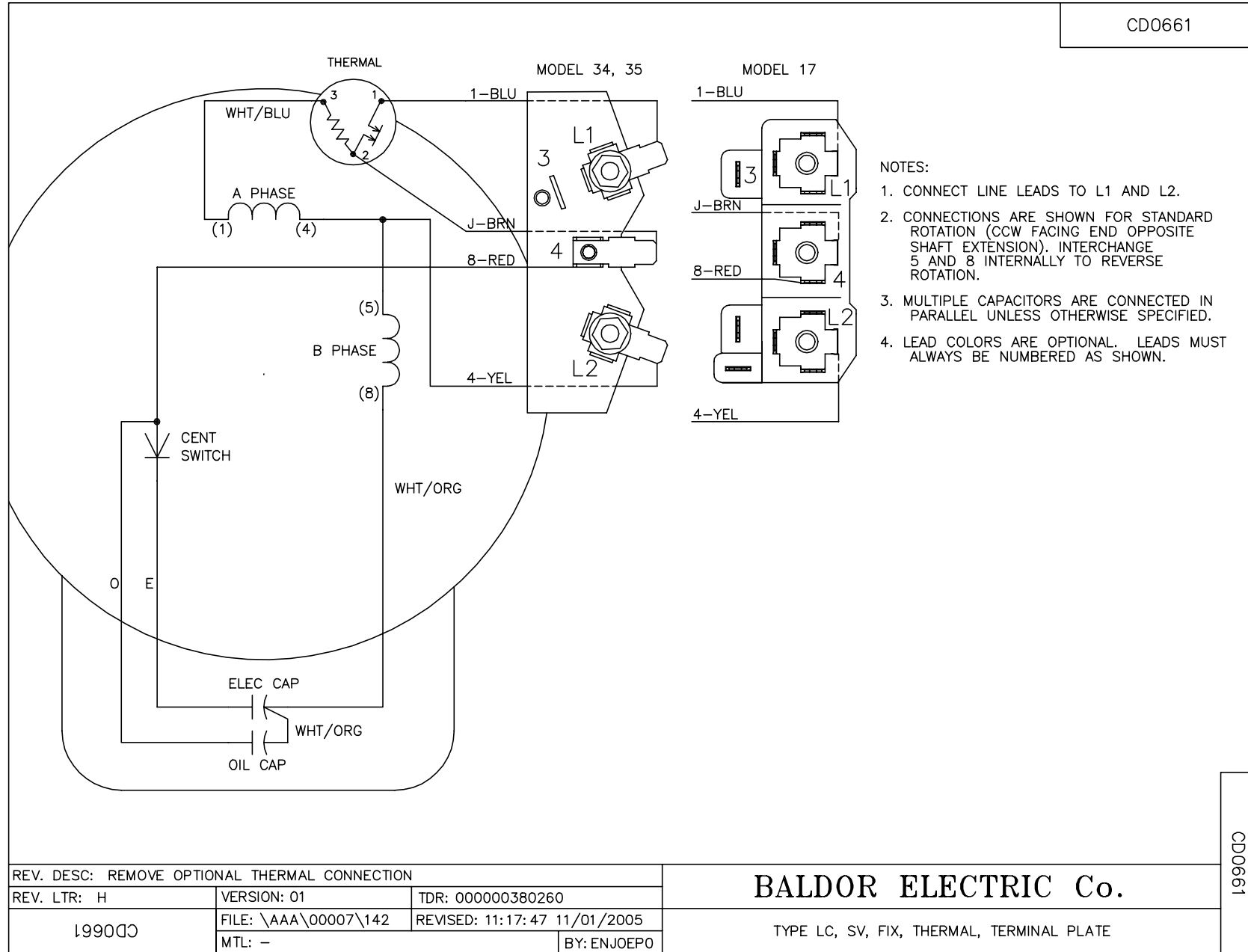




CUST. NAME		CUST. P.O.		CERTIFIED BY		MODEL		INSUL		AMB	
H.P.		MTG		TYPE		R.P.M.		VOLTS		ENCL	
PHASE		FREQ		FRAME		REMARKS:					
REV: C		REDRAWN TO AUTOCAD									
Z66HGΣ		SCALE: .3		BY: SSS		REVISED: 09/06/94		BALDOR ELECTRIC Co.			
		FILE: AAA00014083		TDR: 0051036		STD VERT FACE MTD 35LC OPEN 56J W/TERM PLATE & DRIP COVER					

35H992

CD0661



CD0661

REV. DESC: REMOVE OPTIONAL THERMAL CONNECTION			
REV. LTR: H	VERSION: 01	TDR: 00000380260	
199000	FILE: \AAA\00007\142	REVISED: 11:17:47 11/01/2005	
	MTL: -	BY: ENJOEPO	

BALDOR ELECTRIC Co.

TYPE LC, SV, FIX, THERMAL, TERMINAL PLATE