

# **BALDOR**® • **RELIANCE**

## **Product Information Packet**

### **KEM30006**

**.33HP,3450RPM,3PH,60HZ,56C,3413M,OPEN,F1**

Part Detail							
Revision:	C	Status:	PRD/A	Change #:		Proprietary:	No
Type:	AC	Prod. Type:	3413M	Elec. Spec:	34WGR140	CD Diagram:	CD0005
Enclosure:	OPEN	Mfg Plant:		Mech. Spec:	34F012	Layout:	34LYF012
Frame:	56C	Mounting:	F1	Poles:	02	Created Date:	10-03-2014
Base:	N	Rotation:	R	Insulation:	B	Eff. Date:	05-25-2016
Leads:	9#18					Replaced By:	
Literature:		Elec. Diagram:					

Nameplate NP3155L										
CAT.NO.	KEM30006									
SPEC.	34F012R140G1									
HP	.33									
VOLTS	230/460									
AMP	1.2/6									
RPM	3450									
FRAME	56C				HZ	60			PH	3
SER.F.	1.35		CODE	N	DES	B		CL	B	
F.L. AVG. EFF.	69.5		PF	77						
RATING	40C AMB-CONT									
CC								USABLE AT 208V	1.5	
DE	6203				ODE	6203				
ENCL	OPEN		SN							
	SFA 1.4/7									

Parts List		
Part Number	Description	Quantity
SA288049	SA 34F012R140G1	1.000 EA
RA274250	RA 34F012R140G1	1.000 EA
NS2512A01	INSULATOR, CONDUIT BOX X	1.000 EA
34CB3002A	CB CAST W/.88 DIA HOLE	1.000 EA
51XB1016A07	10-16 X 7/16 HXWSSLD SERTYB	2.000 EA
11XW1032G06	10-32 X .38, TAPTITE II, HEX WSHR SLTD U	1.000 EA
34EP3210A03SP	FR ENDPLATE, MACH	1.000 EA
HW5100A03SP	WAVY WASHER (W1543-017)	1.000 EA
34EP3401A01SP	PU ENDPLATE, MACH	1.000 EA
34AD2000	BAFFLE PLATE, STAMPED	1.000 EA
51XT0632A06	6-32X3/8 TY23 HXWS SLDSR	4.000 EA
51XN1032A20	10-32 X 1 1/4 HX WS SL SR	2.000 EA
34FH4000A11	DRIP COVER, STAMPED,PRIMER	1.000 EA
51XW1032A06	10-32 X .38, TAPTITE II, HEX WSHR SLTD S	3.000 EA
34CB4517	CB LID 4 MTG HOLES .22 DIA STAMPED, FOR	1.000 EA
51XW0832A07	8-32 X .44, TAPTITE II, HEX WSHR SLTD SE	4.000 EA
HW2501D13	KEY, 3/16 SQ X 1.375	1.000 EA
HA7000A04	KEY RETAINER 0.625 DIA SHAFTS	1.000 EA
MG1000Y03	MUNSELL 2.53Y 6.70/ 4.60, GLOSS 20,	0.014 GA
10XF0440S02	04-40 X 1/8 TYPE F HEX HD STAINLESS STIC	2.000 EA
HA3100A12	THRUBOLT 10-32 X 7.375	4.000 EA
LB1119N	WARNING LABEL	1.000 EA
MN416A01	TAG-INSTAL-MAINT no wire (1200/bx) 11/14	1.000 EA
LC0005	CONN.DIA.,TY M,9-LD,DUAL VOLT,REVERSING	1.000 EA

<b>Parts List (continued)</b>		
<b>Part Number</b>	<b>Description</b>	<b>Quantity</b>
NP3155L	ALUM SUPER-E UL CSA CC "SEMS"	1.000 EA
35PA1000	PKG GRP, PRINT PK1008A06	1.000 EA
PK3083T	STYROFOAM PACKING CRADLE W/TAPE	1.000 EA

**AC Induction Motor Performance Data**  
Record # 47472 - Typical performance - not guaranteed values

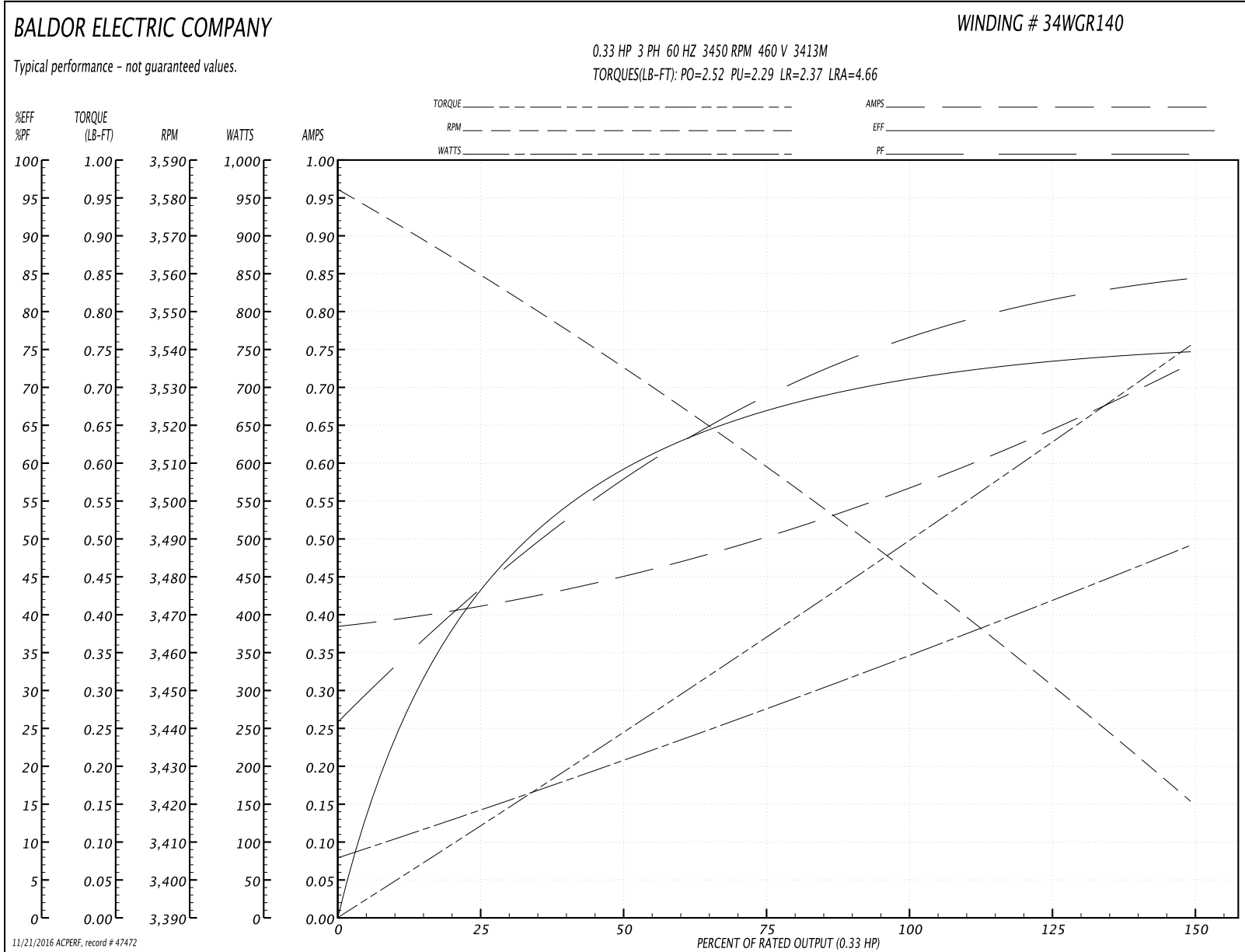
<b>Winding:</b> 34WGR140-R002	<b>Type:</b> 3413M	<b>Enclosure:</b> OPEN
-------------------------------	--------------------	------------------------

Nameplate Data				460 V, 60 Hz: High Voltage Connection	
Rated Output (HP)	.33			Full Load Torque	0.502 LB-FT
Volts	230/460			Start Configuration	direct on line
Full Load Amps	1.2/.6			Breakdown Torque	2.52 LB-FT
R.P.M.	3450			Pull-up Torque	2.29 LB-FT
Hz	60	Phase	3	Locked-rotor Torque	2.37 LB-FT
NEMA Design Code	B	KVA Code	N	Starting Current	4.66 A
Service Factor (S.F.)	1.35			No-load Current	0.388 A
NEMA Nom. Eff.	69.5	Power Factor	77	Line-line Res. @ 25°C	42 Ω
Rating - Duty	40C AMB-CONT			Temp. Rise @ Rated Load	14°C
S.F. Amps	1.4/.7			Temp. Rise @ S.F. Load	16°C
				Locked-rotor Power Factor	72
				Rotor inertia	0.0121 LB-FT <sup>2</sup>

Load Characteristics 460 V, 60 Hz, 0.33 HP

% of Rated Load	25	50	75	100	125	150	S.F.
Power Factor	44	59	69	77	82	85	83
Efficiency	43.9	59.5	67.4	71.1	73.6	74.7	74
Speed	3558	3534	3508	3480	3452	3420	3439
Line amperes	0.408	0.448	0.51	0.572	0.645	0.73	0.679

Performance Graph at 460V, 60Hz, 0.33HP Typical performance - Not guaranteed values



**AC Induction Motor Performance Data**

Record # 49385 - Typical performance - not guaranteed values

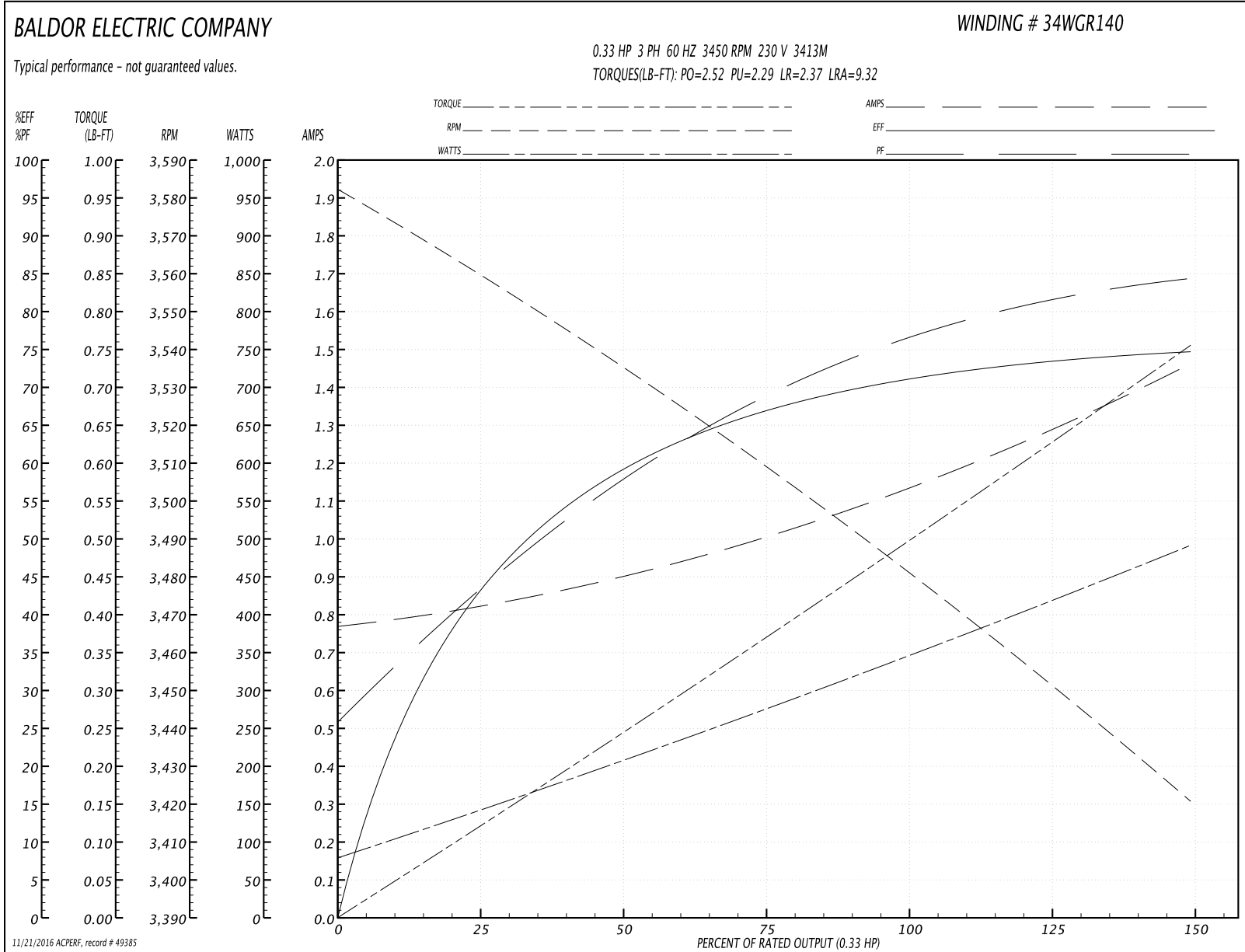
<b>Winding:</b> 34WGR140-R002	<b>Type:</b> 3413M	<b>Enclosure:</b> OPEN
-------------------------------	--------------------	------------------------

Nameplate Data				230 V, 60 Hz: Low Voltage Connection	
Rated Output (HP)	.33			Full Load Torque	0.502 LB-FT
Volts	230/460			Start Configuration	direct on line
Full Load Amps	1.2/.6			Breakdown Torque	2.52 LB-FT
R.P.M.	3450			Pull-up Torque	2.29 LB-FT
Hz	60	Phase	3	Locked-rotor Torque	2.37 LB-FT
NEMA Design Code	B	KVA Code	N	Starting Current	9.32 A
Service Factor (S.F.)	1.35			No-load Current	0.776 A
NEMA Nom. Eff.	69.5	Power Factor	77	Line-line Res. @ 25°C	10.5 Ω
Rating - Duty	40C AMB-CONT			Temp. Rise @ Rated Load	14°C
S.F. Amps	1.4/.7			Temp. Rise @ S.F. Load	16°C
				Locked-rotor Power Factor	72
				Rotor inertia	0.0121 LB-FT <sup>2</sup>

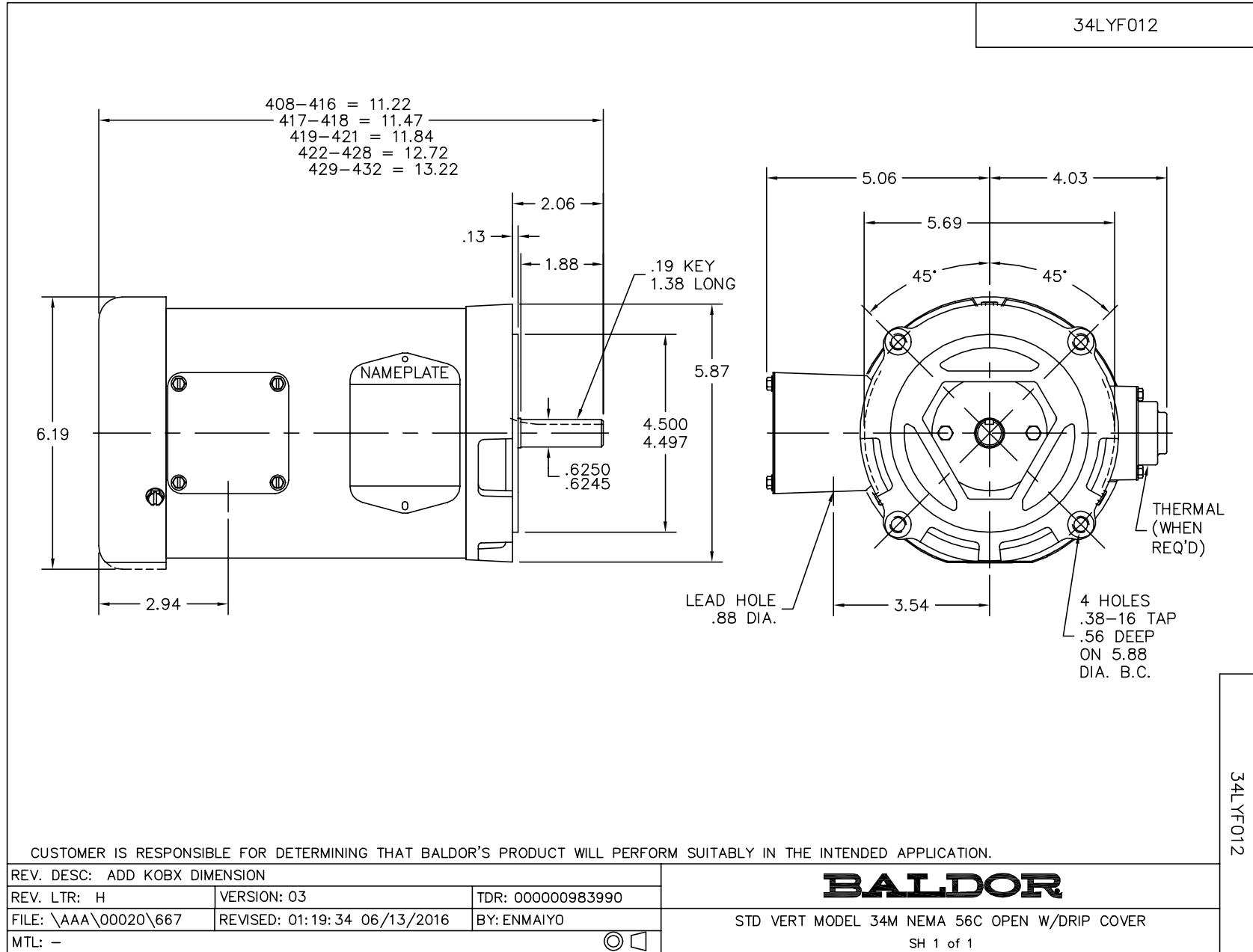
Load Characteristics 230 V, 60 Hz, 0.33 HP

% of Rated Load	25	50	75	100	125	150	S.F.
Power Factor	44	59	69	77	82	85	83
Efficiency	43.9	59.5	67.4	71.1	73.6	74.7	74
Speed	3558	3534	3508	3480	3452	3420	3439
Line amperes	0.816	0.896	1.02	1.144	1.29	1.46	1.358

Performance Graph at 230V, 60Hz, 0.33HP Typical performance - Not guaranteed values



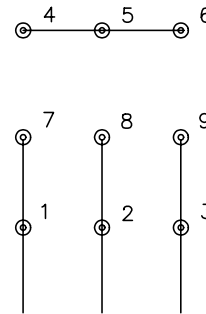
11/21/2016 ACPERF, record # 49385



CD0005



LOW VOLTAGE  
(2Y)



LINE

HIGH VOLTAGE  
(1Y)



LINE

NOTES:

1. INTERCHANGE ANY TWO LINE LEADS TO REVERSE ROTATION.
2. OPTIONAL THERMOSTATS ARE PROVIDED WHEN SPECIFIED.
3. ACTUAL NUMBER OF INTERNAL PARALLEL CIRCUITS MAY BE A MULTIPLE OF THOSE SHOWN ABOVE.
4. LEAD COLORS ARE OPTIONAL. LEADS MUST ALWAYS BE NUMBERED AS SHOWN.

REV. DESC: REVISE TO SHOW OPTIONAL COLORS

REV. LTR: E BY: JLP

REVISED: 01/19/99 10:15

TDR: 0171435

90000

FILE: AAA00005140

MDL: -

MTL: -

**BALDOR ELECTRIC Co.**

3PH, DV, 9 LEADS

CD0005