

BALDOR® • **RELIANCE**

Product Information Packet

M1754T

1/.25HP,1740/870RPM,3PH,60HZ,143T,3518M

| Part Detail | | | | | | | |
|-------------|------|----------------|-------|-------------|----------|---------------|------------|
| Revision: | H | Status: | PRD/A | Change #: | | Proprietary: | No |
| Type: | AC | Prod. Type: | 3518M | Elec. Spec: | 35WGP580 | CD Diagram: | CD0032 |
| Enclosure: | TEFC | Mfg Plant: | | Mech. Spec: | 35AA001 | Layout: | 35LYAA001 |
| Frame: | 143T | Mounting: | F1 | Poles: | 04/08 | Created Date: | 12-21-2009 |
| Base: | RG | Rotation: | R | Insulation: | F | Eff. Date: | 09-27-2016 |
| Leads: | 6#18 | | | | | Replaced By: | |
| Literature: | | Elec. Diagram: | | | | | |

| Nameplate NP1256L | | | | | | | | | | |
|-------------------|--------------|--|------|---|-----|------|--|-------|----------------|---|
| CAT.NO. | M1754T | | | | | | | | | |
| SPEC. | 35AA001P580 | | | | | | | | | |
| HP | 1/.25 | | | | | | | | | |
| VOLTS | 460 | | | | | | | | | |
| AMP | 1.74/.78 | | | | | | | | | |
| RPM | 1740/870 | | | | | | | | | |
| FRAME | 143T | | | | HZ | 60 | | | PH | 3 |
| SER.F. | 1.15 | | CODE | M | DES | - | | CLASS | F | |
| NEMA-NOM-EFF | | | PF | | | | | | | |
| RATING | 40C AMB-CONT | | | | | | | | | |
| CC | | | | | | | | | USABLE AT 208V | |
| DE | 6205 | | | | ODE | 6203 | | | | |
| ENCL | TEFC | | SN | | | | | | | |

| Parts List | | |
|---------------|--|----------|
| Part Number | Description | Quantity |
| SA188998 | SA 35AA001P580 | 1.000 EA |
| RA176717 | RA 35AA001P580 | 1.000 EA |
| 35FN3002A05 | EXFN, PLASTIC, 6.376 OD, .638 ID | 1.000 EA |
| NS2512A01 | INSULATOR, CONDUIT BOX X | 1.000 EA |
| 35CB3009 | 35 CB W/1.09 DIA. LEAD HOLE @ 6: | 1.000 EA |
| 36GS1000 | GASKET-CONDUIT BOX, .06 THICK #SV-330 LE | 1.000 EA |
| 51XB1016A07 | 10-16 X 7/16 HXWSSLD SERTYB | 2.000 EA |
| 11XW1032G06 | 10-32 X .38, TAPTITE II, HEX WSHR SLTD U | 1.000 EA |
| 35FE3100M01 | FREP TEFC ASSEMBLY FOR ROUTING | 1.000 EA |
| HW4500A01 | 1641B(ALEMITE)400 UNIV, GREASE FITT | 1.000 EA |
| HW5100A03SP | WAVY WASHER (W1543-017) | 1.000 EA |
| 35PE3101A01 | PUEP ASSEMBLY FOR ROUTING | 1.000 EA |
| HW4500A01 | 1641B(ALEMITE)400 UNIV, GREASE FITT | 1.000 EA |
| XY1032A02 | 10-32 HEX NUT DIRECTIONAL SERRATION | 4.000 EA |
| 51XB1214A16 | 12-14X1.00 HXWSSLD SERTYB | 1.000 EA |
| 35FH4005A84SP | IEC FH W/GRSR, NO DIMPLES PRIMED | 1.000 EA |
| 51XW1032A06 | 10-32 X .38, TAPTITE II, HEX WSHR SLTD S | 3.000 EA |
| 35CB4521GX | CONDUIT BOX LID KIT | 1.000 EA |
| 51XW0832A07 | 8-32 X .44, TAPTITE II, HEX WSHR SLTD SE | 4.000 EA |
| HW2501D13 | KEY, 3/16 SQ X 1.375 | 1.000 EA |
| HA7000A01 | KEY RETAINER 7/8" DIA SHAFT | 1.000 EA |
| 85XU0407S04 | 4X1/4 U DRIVE PIN STAINLESS | 2.000 EA |
| MJ1000A02 | GREASE, POLYREX EM EXXON (USe 4824-15A) | 0.050 LB |
| MG1000G27 | MED CHARCOAL METALLIC GREY 400-0096 | 0.017 GA |

| Parts List (continued) | | |
|-------------------------------|--|-----------------|
| Part Number | Description | Quantity |
| HA3100A15 | THRUBOLT 10-32 X 8.375 | 4.000 EA |
| LB1119N | WARNING LABEL | 1.000 EA |
| LC0032 | CONNECTION LABEL | 1.000 EA |
| NP1256L | ALUM UL CSA CC | 1.000 EA |
| 35PA1066 | PKG GRP, PRINT PK1008A06 | 1.000 EA |
| MN416A01 | TAG-INSTAL-MAINT no wire (1200/bx) 11/14 | 1.000 EA |

| Accessories | | |
|--------------------|--------------------|-------------------|
| Part Number | Description | Multiplier |
| 35-8762 | C FACE KIT | A8 |
| 35EP1506A01SP | D-FLANGE KIT | A8 |

AC Induction Motor Performance Data

Record # 27968 - Typical performance - not guaranteed values

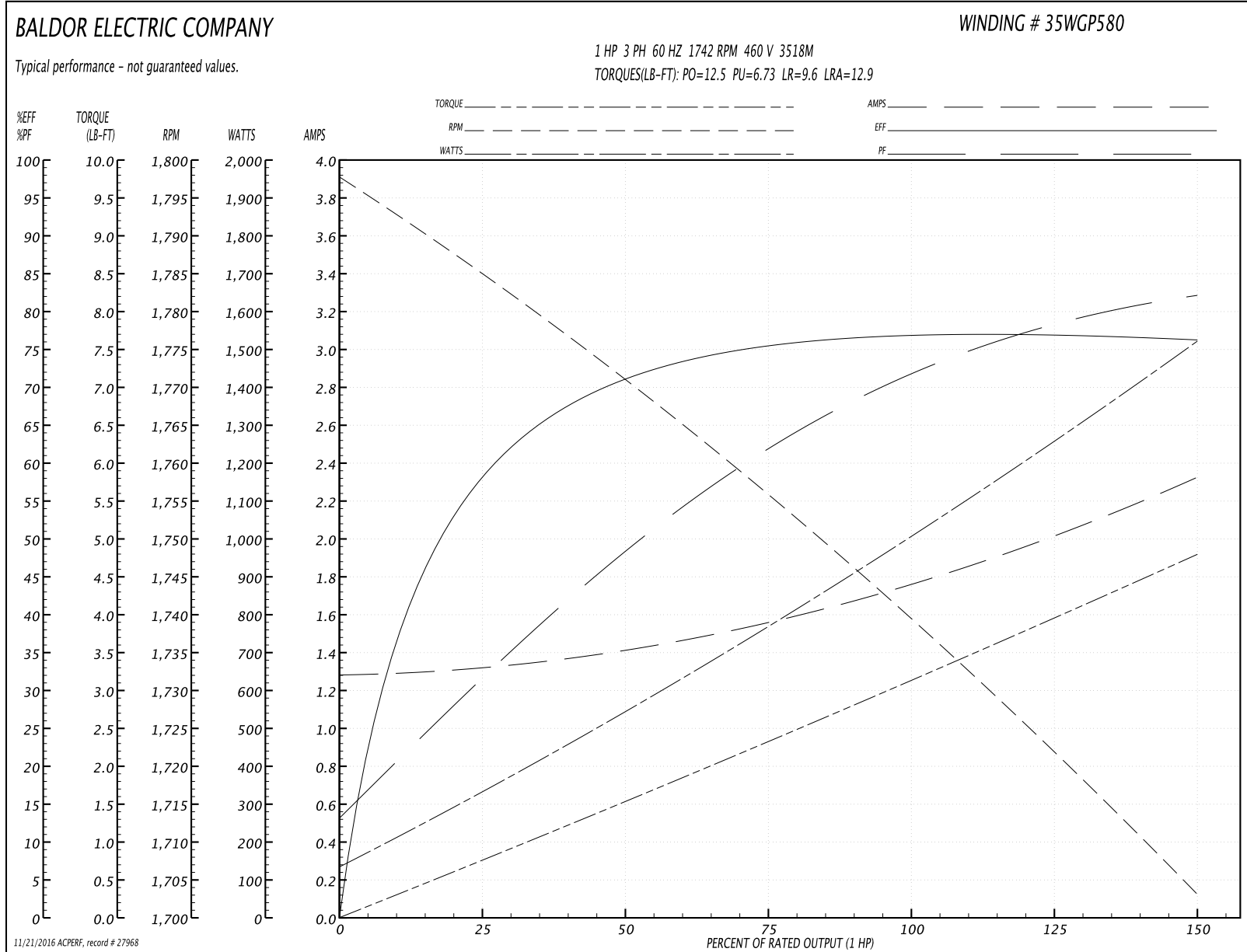
| | | |
|-------------------------------|--------------------|------------------------|
| Winding: 35WGP580-R001 | Type: 3518M | Enclosure: TEFC |
|-------------------------------|--------------------|------------------------|

| Nameplate Data | | | | 460 V, 60 Hz: High Speed Connection | |
|-----------------------|--------------|--------------|---|--|----------------|
| Rated Output (HP) | 1/.25 | | | Full Load Torque | 3.04 LB-FT |
| Volts | 460 | | | Start Configuration | direct on line |
| Full Load Amps | 1.74/.78 | | | Breakdown Torque | 12.5 LB-FT |
| R.P.M. | 1740/870 | | | Pull-up Torque | 6.73 LB-FT |
| Hz | 60 | Phase | 3 | Locked-rotor Torque | 9.6 LB-FT |
| NEMA Design Code | - | KVA Code | M | Starting Current | 12.9 A |
| Service Factor (S.F.) | 1.15 | | | No-load Current | 1.29 A |
| NEMA Nom. Eff. | 0 | Power Factor | 0 | Line-line Res. @ 25°C | 19.142 Ω |
| Rating - Duty | 40C AMB-CONT | | | Temp. Rise @ Rated Load | 58°C |
| S.F. Amps | | | | Temp. Rise @ S.F. Load | 67°C |

Load Characteristics 460 V, 60 Hz, 1 HP

| % of Rated Load | 25 | 50 | 75 | 100 | 125 | 150 | S.F. |
|-----------------|--------|--------|--------|------|--------|--------|------|
| Power Factor | 32 | 48 | 61 | 71 | 77 | 83 | 75 |
| Efficiency | 58.9 | 71.8 | 76.4 | 77.9 | 77.7 | 76.6 | 77.8 |
| Speed | 1783.6 | 1771.1 | 1757.4 | 1742 | 1725.1 | 1702.5 | 1732 |
| Line amperes | 1.31 | 1.4 | 1.55 | 1.74 | 1.98 | 2.32 | 1.88 |

Performance Graph at 460V, 60Hz, 1.0HP Typical performance - Not guaranteed values



AC Induction Motor Performance Data

Record # 27969 - Typical performance - not guaranteed values

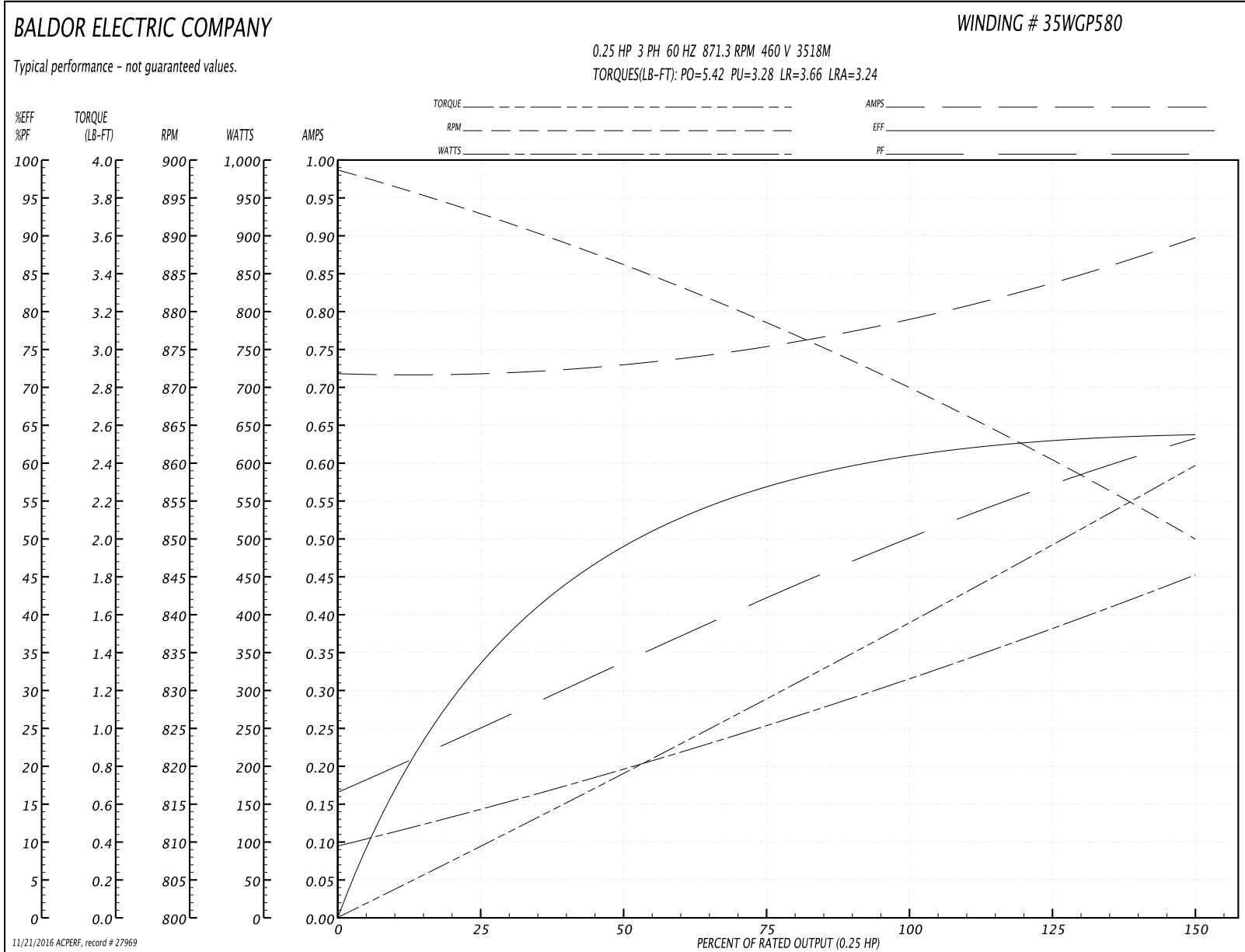
| | | |
|-------------------------------|--------------------|------------------------|
| Winding: 35WGP580-R001 | Type: 3518M | Enclosure: TEFC |
|-------------------------------|--------------------|------------------------|

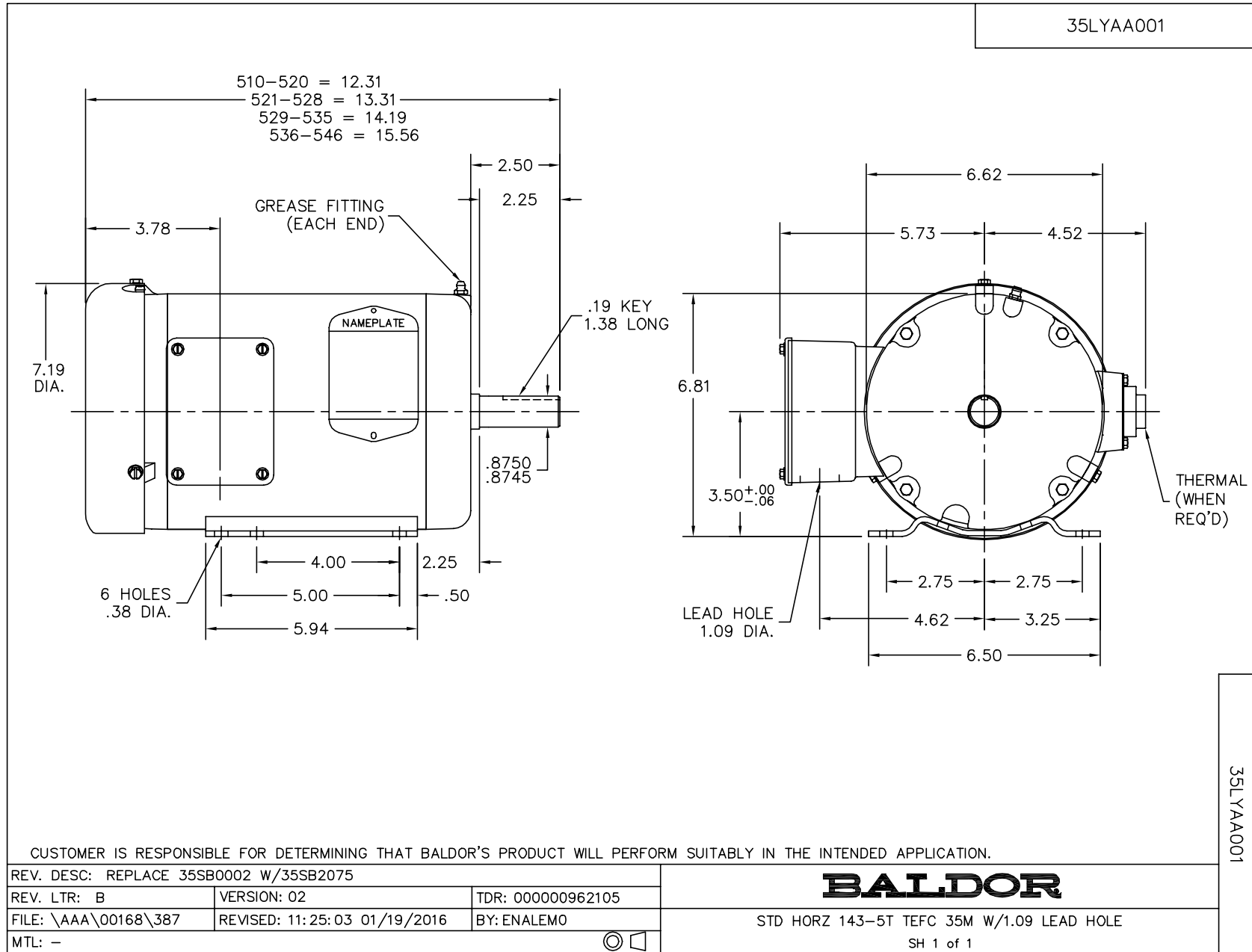
| Nameplate Data | | | | 460 V, 60 Hz: Low Speed Connection | |
|-----------------------|--------------|--------------|---|---------------------------------------|----------------|
| Rated Output (HP) | 1/.25 | | | Full Load Torque | 1.5 LB-FT |
| Volts | 460 | | | Start Configuration | direct on line |
| Full Load Amps | 1.74/.78 | | | Breakdown Torque | 5.42 LB-FT |
| R.P.M. | 1740/870 | | | Pull-up Torque | 3.28 LB-FT |
| Hz | 60 | Phase | 3 | Locked-rotor Torque | 3.66 LB-FT |
| NEMA Design Code | - | KVA Code | M | Starting Current | 3.24 A |
| Service Factor (S.F.) | 1.15 | | | No-load Current | 0.718 A |
| NEMA Nom. Eff. | 0 | Power Factor | 0 | Line-line Res. @ 25°C | 76.5 Ω |
| Rating - Duty | 40C AMB-CONT | | | Temp. Rise @ Rated Load | 47°C |
| S.F. Amps | | | | Temp. Rise @ S.F. Load | 51°C |

Load Characteristics 460 V, 60 Hz, 0.25 HP

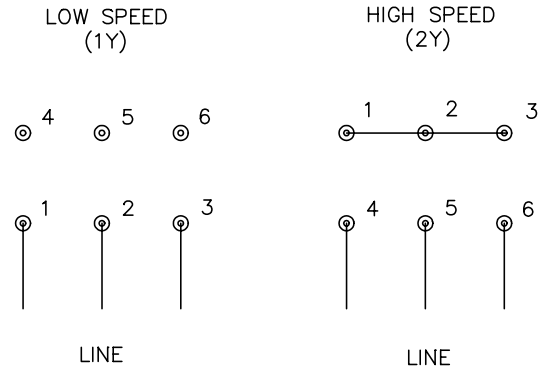
| % of Rated Load | 25 | 50 | 75 | 100 | 125 | 150 | S.F. |
|-----------------|-------|-------|-------|-------|-------|-------|------|
| Power Factor | 25 | 33 | 41 | 49 | 56 | 63 | 53 |
| Efficiency | 32.5 | 48.1 | 56.4 | 61 | 63 | 63.6 | 62.2 |
| Speed | 892.3 | 887.1 | 879.4 | 871.3 | 862.5 | 849.8 | 866 |
| Line amperes | 0.718 | 0.728 | 0.751 | 0.784 | 0.827 | 0.898 | 0.81 |

Performance Graph at 460V, 60Hz, 0.25HP Typical performance - Not guaranteed values





CD0032



NOTES:

1. INTERCHANGE ANY TWO LINE LEADS TO REVERSE ROTATION.
2. OPTIONAL THERMOSTATS ARE PROVIDED WHEN SPECIFIED.
3. ACTUAL NUMBER OF INTERNAL PARALLEL CIRCUITS MAY BE A MULTIPLE OF THOSE SHOWN ABOVE.
4. LEAD COLORS ARE OPTIONAL. LEADS MUST ALWAYS BE NUMBERED AS SHOWN.

| | | | |
|---|---------|------------------------|--------------|
| REV. DESC: REVISE TO SHOW OPTIONAL COLORS | | | |
| REV. LTR: E | BY: JLP | REVISED: 01/22/99 8:27 | TDR: 0171435 |
| CD0032 | | FILE: AAA00005145 | MDL: - |
| | | MTL: - | |

BALDOR ELECTRIC Co.

3PH, SV, 6 LEADS, 2-SPEED 1-WINDING VARIABLE TORQUE

CD0032