

# **BALDOR**® • ***RELIANCE***

## **Product Information Packet**

# **VLECP3769T**

**7.5HP,3510RPM,3PH,60HZ,213LP,0731M,TEFC**

| Part Detail |       |                |       |             |          |               |            |
|-------------|-------|----------------|-------|-------------|----------|---------------|------------|
| Revision:   | C     | Status:        | PRD/A | Change #:   |          | Proprietary:  | No         |
| Type:       | AC    | Prod. Type:    | 0732M | Elec. Spec: | 07WGY010 | CD Diagram:   | CD0005     |
| Enclosure:  | TEFC  | Mfg Plant:     |       | Mech. Spec: | 07H347   | Layout:       | 07LYH347   |
| Frame:      | 213LP | Mounting:      | F1    | Poles:      | 02       | Created Date: | 07-07-2015 |
| Base:       | N     | Rotation:      | R     | Insulation: | F        | Eff. Date:    | 11-16-2016 |
| Leads:      | 9#14  |                |       |             |          | Replaced By:  |            |
| Literature: |       | Elec. Diagram: |       |             |          |               |            |

| Nameplate NP3258E |              |      |         |
|-------------------|--------------|------|---------|
| CAT.NO.           | VLECP3769T   |      |         |
| SPEC.             | 07H347Y010G1 |      |         |
| HP                | 7.5          | TE   |         |
| VOLTS             | 230/460      |      |         |
| AMP               | 17.2/8.6     |      |         |
| RPM               | 3510         |      |         |
| FRAME             | 213LP        | HZ   | 60      |
| SER.F.            | 1.15         | CODE | H DES B |
| RATING            | 40C AMB-CONT |      |         |
| SN                |              |      |         |
| DE                | QJ211        | ODE  | 6307    |
| NEMA-NOM-EFF      | 91           | PF   | 88      |
| G.MIN.EFF         | 89.5         | CC   | 010A    |
| T. CODE           | T3C          | T=   | 160     |
|                   |              | PH   | 3       |
|                   |              | CL   | F       |

|                                |                  |
|--------------------------------|------------------|
| <b>Nameplate NP3261E</b>       |                  |
| <b>SPEC.</b>                   | 07H347Y010G1     |
| <b>D.E. BRG.</b>               | 55BZ02X00X       |
| <b>O.D.E. BRG.</b>             | 35BC03X30X       |
| <b>GREASE</b>                  | POLYREX EM       |
| <b>RPM MAX</b>                 | 5400             |
|                                | <b>MAX. KVAR</b> |
| <b>BLANK</b>                   |                  |
| <b>INV. TYPE</b>               | PWM              |
| <b>T=</b>                      | 160              |
| <b>C HP FR</b>                 | 60               |
| <b>CT HZ FROM</b>              | 6                |
| <b>VT HZ FROM</b>              | 3                |
| <b>HTR-VOLTS</b>               | N/A              |
| <b>HTR-WATTS</b>               | N/A              |
| <b>C HP TO</b>                 | 90               |
| <b>CT HZ TO</b>                | 60               |
| <b>VT HZ TO</b>                | 60               |
| <b>HTR-AMPS</b>                | N/A              |
| <b>MAX. SPACE HEATER TEMP.</b> | N/A              |

| Parts List   |  |          |
|--------------|--|----------|
| Part Number  | Description                              | Quantity |
| SA303668     | SA 07H347Y010G1                          | 1.000 EA |
| RA290803     | RA 07H347Y010G1                          | 1.000 EA |
| 36FN3000C02  | EXFN, PLASTIC, 5.25 OD, 1.175 ID         | 1.000 EA |
| HA6481       | S.S. LIFTING EYE BRACKET FOR 306 & 307 F | 2.000 EA |
| 10XN3816S16  | 3/8-16 X 1 HEX HD CAP SCREW, STAINLE     | 4.000 EA |
| HW1001S38    | WASHER, 3/8 SPLT LK, STAINLESS STEEL     | 4.000 EA |
| 10XN2520S06  | 1/4 20X3/8 HX HD CAP S.S.                | 2.000 EA |
| HW1001S25    | WASHER, 1/4 SPLT LK, STAINLESS STEEL     | 2.000 EA |
| HA3104S13    | THRUBOLT- .31-18X11.75 SSTDR#59495       | 4.000 EA |
| WD1000B16    | T&B CX70TN TERMINAL                      | 2.000 EA |
| 09CB1002A08G | CB 309 W/1.50 NPT LEAD HOLE (GRAY EPOXY) | 1.000 EA |
| RM1017       | LEAD SEPERATOR GASKET MODEL 307 1/8" THK | 1.000 EA |
| 51XW2520A12  | .25-20 X .75, TAPTITE II, HEX WSHR SLTD  | 4.000 EA |
| 10XN2520S06  | 1/4 20X3/8 HX HD CAP S.S.                | 1.000 EA |
| HW1001S25    | WASHER, 1/4 SPLT LK, STAINLESS STEEL     | 1.000 EA |
| WD1000B16    | T&B CX70TN TERMINAL                      | 1.000 EA |
| 37EP1101A48G | FR EP, MACH, 307 BRG FOR CI FAN COVER W/ | 1.000 EA |
| HW4500A31    | GREASE FIT/EXT 3014-B .25-28 ALEMITE     | 1.000 EA |
| HW4500A17    | 317400 ALEMITE GREASE RELIEF             | 1.000 EA |
| HW5100A08    | W3118-035 WVY WSHR (WB)                  | 1.000 EA |
| 37EP1504A02G | SPL PU E.P. MACH, W/GRAY EPOXY QJ211 BRG | 1.000 EA |
| HW4500A01    | 1641B(ALEMITE)400 UNIV, GREASE FITT      | 1.000 EA |
| HW4500A17    | 317400 ALEMITE GREASE RELIEF             | 1.000 EA |
| 10XN2520S28  | 1/4-20X 1 3/4 HEX HD SS X                | 4.000 EA |

| Parts List (continued) |  |          |
|------------------------|--|----------|
| Part Number            | Description                              | Quantity |
| HW1001S25              | WASHER, 1/4 SPLT LK, STAINLESS STEEL     | 4.000 EA |
| 10XN2520S2             | 1/4-20X 3 1/4 HEX HD SS X                | 2.000 EA |
| HW1001S25              | WASHER, 1/4 SPLT LK, STAINLESS STEEL     | 2.000 EA |
| 51XB1214A20            | 12-14X1.25 HXWSSLD SERTYB                | 1.000 EA |
| 07FH1001A06G           | 307 FH FOR MTG TO FR E.P. W/GREASER & DR | 1.000 EA |
| 10XN2520S28            | 1/4-20X 1 3/4 HEX HD SS X                | 3.000 EA |
| HW1001S25              | WASHER, 1/4 SPLT LK, STAINLESS STEEL     | 3.000 EA |
| 40FH2500A04G           | P/L DRIP COVER MODEL 40- OPEN MACH, GRA  | 1.000 EA |
| HA2086A03              | .375 X 1.0 HVY-FT SPACER SPIRAL # 62434  | 4.000 EA |
| 10XN3816S32            | 3/8-16 X 2 HEX HD CAP SCREW, STAINLE     | 4.000 EA |
| HW1001S38              | WASHER, 3/8 SPLT LK, STAINLESS STEEL     | 4.000 EA |
| HW4600B33              | V-RING SLINGER 1.375 X 1.890 X .35 VITON | 1.000 EA |
| HW4600B40              | V-RING SLINGER 2.000 X 2.680 X .28 VITON | 1.000 EA |
| 12CB1503A03G           | CONDUIT BOX LID, MACH (GRAY), WITH LIP   | 1.000 EA |
| 12GS1002               | GASKET, CONDUIT BOX LID, NEOP            | 1.000 EA |
| 10XN2520S12            | BOLT 1/4 - 20X 3/4 HEX HEAD SS (F/S)     | 2.000 EA |
| HW1001S25              | WASHER, 1/4 SPLT LK, STAINLESS STEEL     | 2.000 EA |
| MJ5001A27              | 32220KN GRAY SEALER *MIN BUY 4 QTS=1GAL  | 0.001 QT |
| MJ5001A14              | DYNAPRO SEAL, CP MOTORS VC#2508050 (603  | 0.001 EA |
| 85XU0407S04            | 4X1/4 U DRIVE PIN STAINLESS              | 4.000 EA |
| LB1115N                | LABEL,LIFTING DEVICE (ON ROLLS)          | 1.000 EA |
| LB1002N                | LABEL,MARINE DUTY (ON ROLLS)             | 1.000 EA |
| MJ1000A02              | GREASE, POLYREX EM EXXON (USe 4824-15A)  | 0.050 LB |
| MG1025N19              | WILKOFAS, 778.50, RELIANCE BLUE-GREEN    | 0.036 GA |

Product Information Packet: VLECP3769T - 7.5HP,3510RPM,3PH,60HZ,213LP,0731M,TEFC

|           |  |          |
|-----------|--|----------|
| LC0005E01 | CONN.DIA./WARNING LABEL (LC0005/LB1119N) | 1.000 EA |
| LB1449    | DIV-2/NEC WARNING LABEL                  | 1.000 EA |
| NP3258E   | SS CP SUPER-E DIV-2 UL CSA-C US EEV CC   | 1.000 EA |
| NP3261E   | SS CP SUPER-E AUX DATA INFORMATION       | 1.000 EA |
| 07PA1011  | PKG GRP, 07 CAST IRON PK1181             | 1.000 EA |
| 07PA1095  | PKG GRP, VER 07 CAST IRON                | 1.000 EA |
| PK6503    | STRUCTURAL WOOD PSC 1X6X8                | 4.000 EA |
| MN416A01  | TAG-INSTAL-MAINT no wire (1200/bx) 11/14 | 1.000 EA |

**AC Induction Motor Performance Data**

Record # 47061 - Typical performance - not guaranteed values

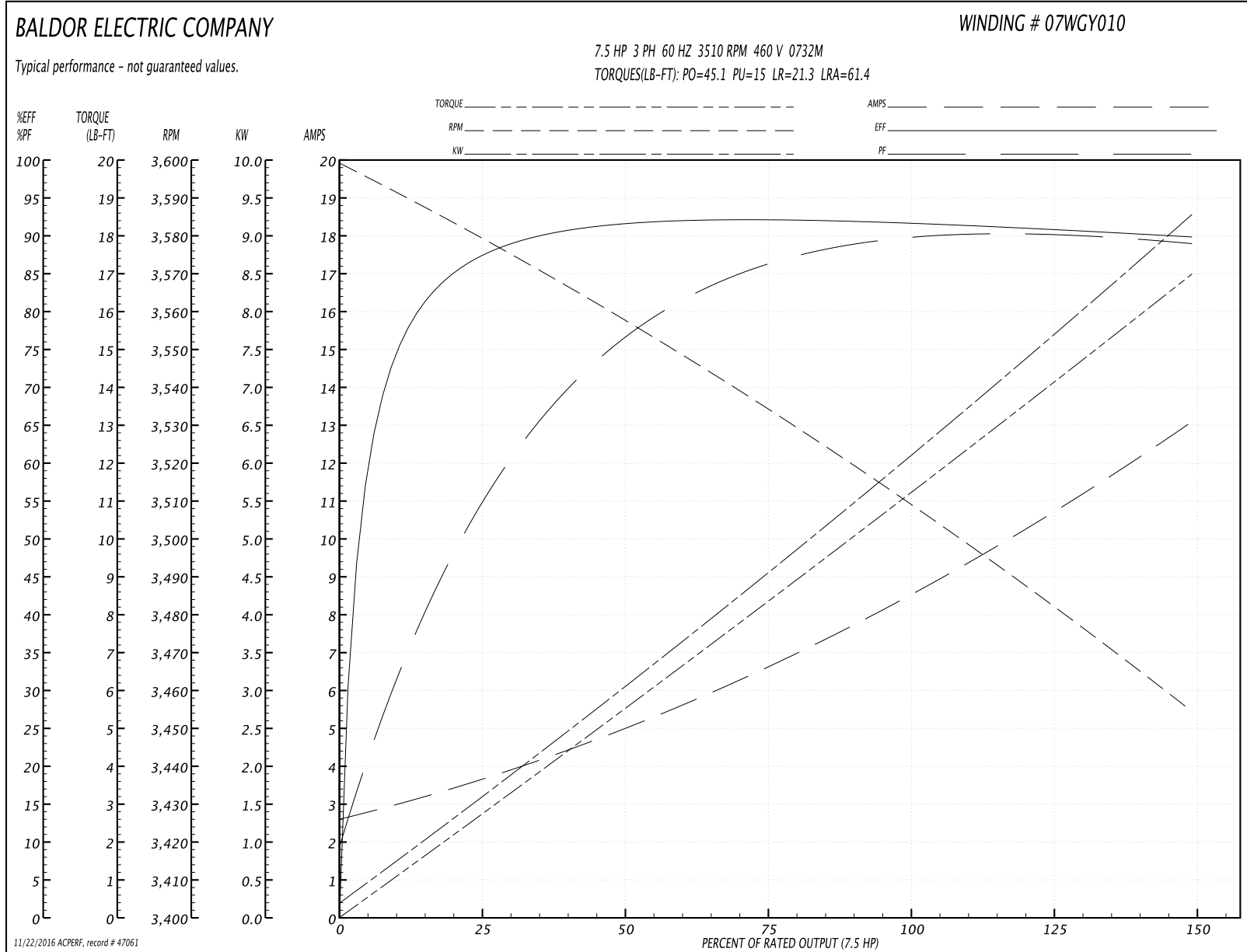
|                               |                    |                        |
|-------------------------------|--------------------|------------------------|
| <b>Winding:</b> 07WGY010-R020 | <b>Type:</b> 0732M | <b>Enclosure:</b> TEFC |
|-------------------------------|--------------------|------------------------|

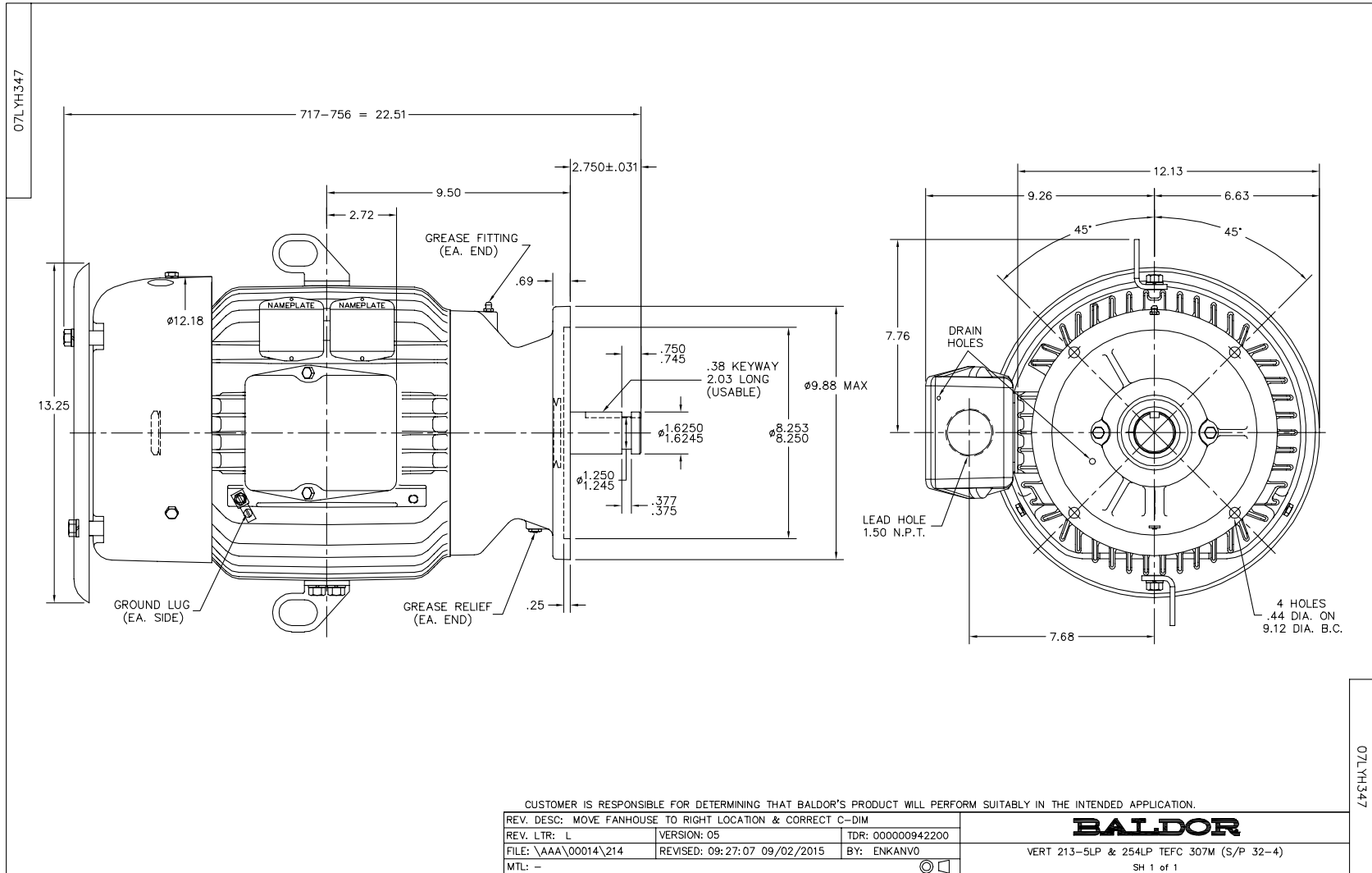
| Nameplate Data        |              |              |    | 460 V, 60 Hz:<br>High Voltage Connection |                          |
|-----------------------|--------------|--------------|----|--|--------------------------|
| Rated Output (HP)     | 7.5          |              |    | Full Load Torque                         | 11.1 LB-FT               |
| Volts                 | 230/460      |              |    | Start Configuration                      | direct on line           |
| Full Load Amps        | 17.2/8.6     |              |    | Breakdown Torque                         | 45.1 LB-FT               |
| R.P.M.                | 3510         |              |    | Pull-up Torque                           | 15 LB-FT                 |
| Hz                    | 60           | Phase        | 3  | Locked-rotor Torque                      | 21.3 LB-FT               |
| NEMA Design Code      | B            | KVA Code     | H  | Starting Current                         | 61.4 A                   |
| Service Factor (S.F.) | 1.15         |              |    | No-load Current                          | 2.75 A                   |
| NEMA Nom. Eff.        | 91           | Power Factor | 88 | Line-line Res. @ 25°C                    | 1.14 Ω                   |
| Rating - Duty         | 40C AMB-CONT |              |    | Temp. Rise @ Rated Load                  | 41°C                     |
| S.F. Amps             |              |              |    | Temp. Rise @ S.F. Load                   | 50°C                     |
|                       |              |              |    | Locked-rotor Power Factor                | 31.7                     |
|                       |              |              |    | Rotor inertia                            | 0.292 LB-FT <sup>2</sup> |

Load Characteristics 460 V, 60 Hz, 7.5 HP

| % of Rated Load | 25   | 50   | 75   | 100  | 125  | 150  | S.F. |
|-----------------|------|------|------|------|------|------|------|
| Power Factor    | 57   | 78   | 85   | 89   | 89   | 90   | 89   |
| Efficiency      | 86.8 | 91.2 | 92.2 | 91.8 | 90.9 | 89.8 | 91.3 |
| Speed           | 3579 | 3558 | 3536 | 3510 | 3484 | 3454 | 3494 |
| Line amperes    | 3.42 | 4.86 | 6.63 | 8.52 | 10.7 | 13   | 9.84 |

Performance Graph at 460V, 60Hz, 7.5HP Typical performance - Not guaranteed values

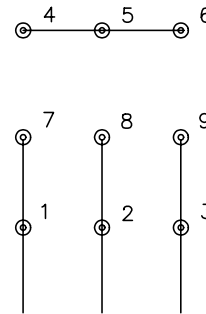




CD0005



LOW VOLTAGE  
(2Y)



LINE

HIGH VOLTAGE  
(1Y)



LINE

NOTES:

1. INTERCHANGE ANY TWO LINE LEADS TO REVERSE ROTATION.
2. OPTIONAL THERMOSTATS ARE PROVIDED WHEN SPECIFIED.
3. ACTUAL NUMBER OF INTERNAL PARALLEL CIRCUITS MAY BE A MULTIPLE OF THOSE SHOWN ABOVE.
4. LEAD COLORS ARE OPTIONAL. LEADS MUST ALWAYS BE NUMBERED AS SHOWN.

|   |         |                         |              |
|---|---------|-------------------------|--------------|
| REV. DESC: REVISE TO SHOW OPTIONAL COLORS |         |                         |              |
| REV. LTR: E                               | BY: JLP | REVISED: 01/19/99 10:15 | TDR: 0171435 |
| 90000                                     |         | FILE: AAA00005140       | MDL: -       |
|   |         | MTL: -                  |              |

**BALDOR ELECTRIC Co.**

3PH, DV, 9 LEADS

CD0005