

SRC FLYGT ADAPTER

Discharge:
6" ANSI flange

The design of this adapter allows the submersible pump to be installed or removed without requiring personnel to enter the wet well.



ADAPTER

Ductile iron

SEALING RING

Stainless steel

PAINT

Air dry enamel, water based.

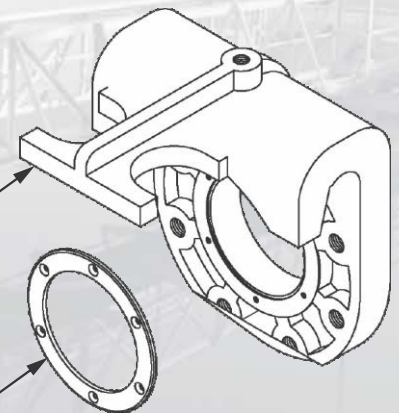
WARRANTY

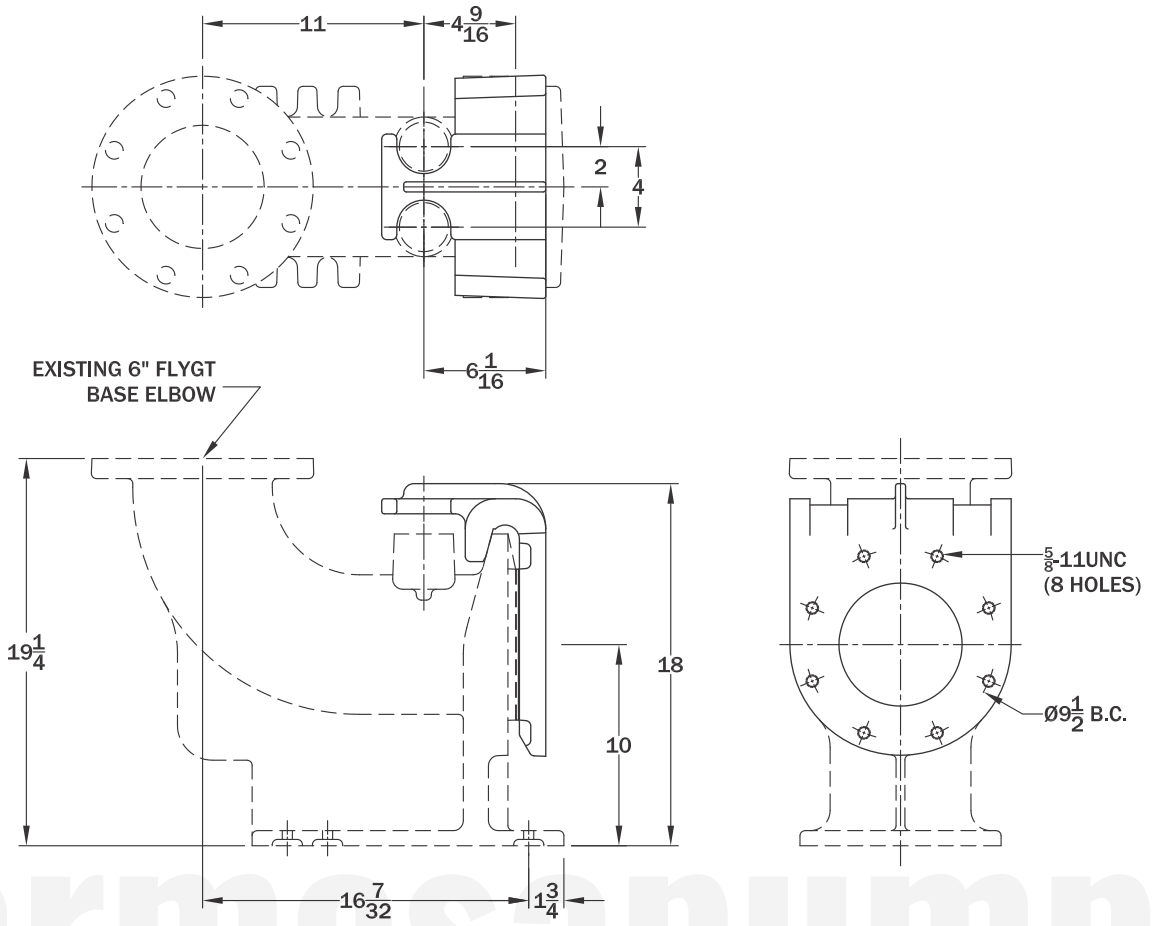
1 year

Assemblies **do not** include pump, discharge piping, guide rails, base elbow, lifting chain nor gate valve and handle.

FLANGE
65-45-12 DUCTILE IRON
FITS STANDARD
ANSI FLANGES
USABLE WITH 1½" & 2"
GUIDE RAILS

SEALING RING
NON-CORROSIVE
300 SERIES SST
BOLT IN DESIGN
(STANDARD)





barmesapumps