

BERKELEY® Type C Straight Centrifugal Pumps



The Type C Pump is a compact, horizontal, single stage, centrifugal pump close-coupled to an electric motor. The removal of readily accessible bolts (back pull-out construction), permits the removal of the pumping element, exposing the impeller and seal for inspection, without disturbing the piping.

APPLICATIONS

- General farm or home irrigation, air conditioning and refrigeration

SPECIFICATIONS

Body and Base – Gray cast iron
Bracket – Cast iron
Impeller – Silicon bronze
Shaft – Threaded stainless steel

FEATURES

Flow Rates – To 160 U.S. gallons per minute.

Discharge sizes – 1-1/4" through 2".

Temperature – Applications up to 200°F.

Manufacture – Carefully manufactured with materials best suited for water pump applications assures a unit with long life and dependability.

Bracket – Sturdy cast iron bracket houses seal and maintains positive alignment between motor and volute case.

Volute Case – Precision machined gray cast iron, with NPT tapped openings for suction and discharge. Standard discharge position is horizontal, as pictured. Volute may be rotated for vertical-up discharge.

Impeller – Enclosed multi-vane silicon bronze impeller is balanced to eliminate vibration and provide smooth, quiet operation. Impeller is threaded on motor shaft for positive alignment.

Shaft Seal – Self-adjusting, water-cooled, mechanical shaft seal prevents leakage and eliminates need for drain piping. Run-in and periodic adjustment is not required.

Motor Shaft – Stainless steel shaft is threaded for direct mounting of impeller. Shaft extension to impeller is short to increase shaft rigidity and to extend bearing life.

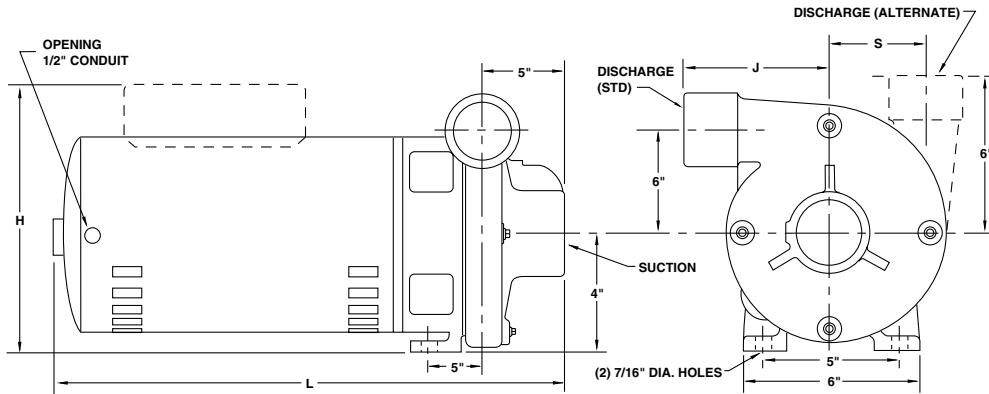
Motor – Heavy-duty, 3 HP, flange-mounted, motor designed for continuous 3600 RPM operation. Two ball bearings are permanently lubricated, eliminating the need for re-lubrication service. Open, drip-proof enclosures are standard. All models can be furnished with either single-phase (230V) or three-phase (230/460) motors. Totally enclosed fan-cooled motor is available for three-phase power.

ORDERING INFORMATION

Model Number	HP	Catalog Number	Phase	Volts	Suct.	Disch.	Approx. Wt. Lbs.
C1-1/4TPMS	3	B53602S	1	230	1-1/2"	1-1/4"	55
		B53603S	3	208/230/460			
		B53603SMS2	3	575			
C1-1/2TPHS	3	B59212S	1	230	2"	1-1/2"	56
		B59213S	3	208/230/460			
		B59213SMS2	3	575			
C2MPS	3	B53616S	1	230	2-1/2"	2"	58
		B53617S	3	208/230/460			
		B53617SMS2	3	575			

BERKELEY® Type C Straight Centrifugal Pumps

OUTLINE DIMENSIONS



Dimensions (in inches) are for estimating purposes only.

DIMENSIONAL DATA

Model Number	HP	Suction (NPT)	Disch. Phase	H*	J	K	L*	S	M
C1-1/4TPMS	3	1-1/2	1-1/4	9-1/4	5	2-1/2	16-15/16	3-5/16	1-7/8
C1-1/2TPHS	3	2	1-1/2	8-1/4	5	2-11/16	17-1/4	3-1/2	2
C2MPS	3	2-1/2	2	9-1/4	4-7/8	2-5/16	17-1/4	3-1/16	2-7/16

*Overall height (H) and length (L) are shown for single phase motors. Three phase motors are slightly smaller. Dimensions are for estimating purposes only.

PUMP PERFORMANCE

