

NPE/NPE-F

NPE-F frame mounted configurations were discontinued in August 2025.

Table of contents

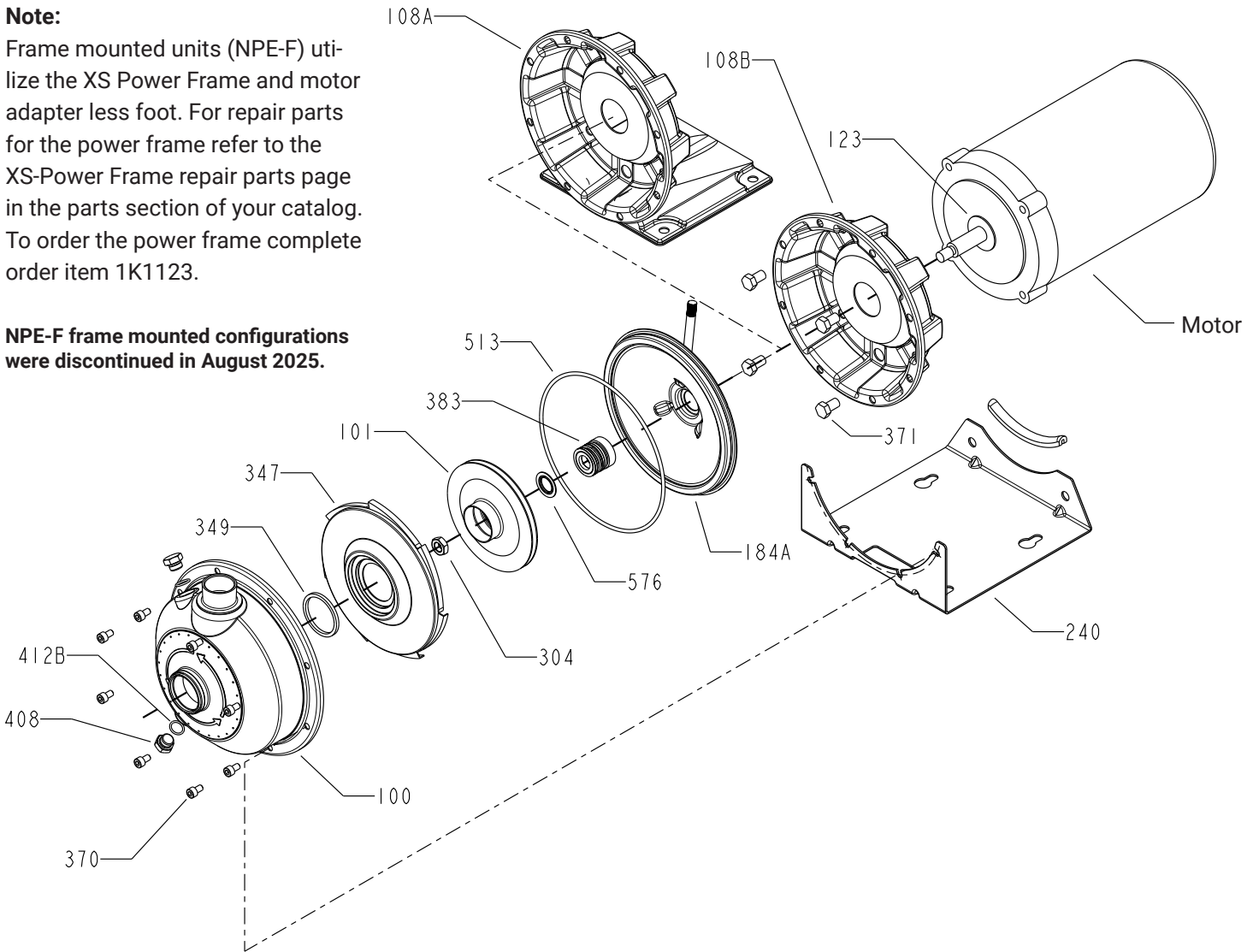
NPE end suction

Pictorial breakdown of pump	2	Impeller chart standard impeller by impeller code	4
Parts list.....	3	Motor chart.....	4
Optional components	3		

Note:

Frame mounted units (NPE-F) utilize the XS Power Frame and motor adapter less foot. For repair parts for the power frame refer to the XS-Power Frame repair parts page in the parts section of your catalog. To order the power frame complete order item 1K1123.

NPE-F frame mounted configurations were discontinued in August 2025.



Type 21 mechanical seal (5/8" seal)						
Seal code	Rotary	Stationary	Elastomers	Metal parts	Part no.	Casing o-ring
2	Carbon	Silicon carbide	EPR	316 SS	10K18	EPR
4			Viton		10K55	Viton
5	EPR		10K81		EPR	
6	Viton		10K62		Viton	
8*	EPR		10K167		EPR	
9	Carbon	Ceramic	Teflon		10K52	Teflon

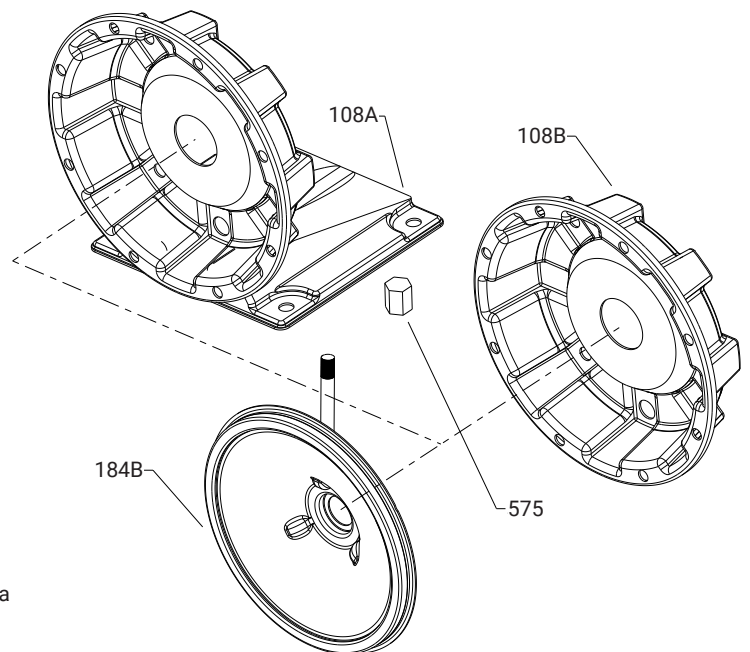
* This is a JC Type 2100 unitized seal ideal for glycol applications.

NPE standard repair parts list

Item No.	Description	Materials of construction	1ST 1 x 1¼	2ST 1¼ x 1½	3ST 1½ x 2	Quantity
100	Casing	AISI 316L SS	1L81	1L82	1L83	1
101	Impeller + spring retainer		See Impeller chart on page 4			1
108A	Motor adapter with foot*	304 SS	1L80			1
108B	Motor adapter less foot*		1L87			
123	Deflector	BUNA-N	5K7			1
184A	Seal housing standard	AISI 316L SS	1L79			1
184B	Seal housing with seal flush		1L333			
240	Motor support	300 SS	4L423			1
	Rubber channel	Rubber	9K188 , 9K753 (based on HP)			1
304	Impeller locknut	AISI 316 SS	13K286			1
347	Guidevane	AISI 316L SS	3L23	3L24	3L25	1
349	Seal ring, guidevane	Viton standard	5K269	5K270		1
		EPR	5K273	5K274		
		BUNA	5K271	5K272		
		Teflon	5L96	5L97		
370	Socket head screw, casing	AISI 410 SS	13L65			8
371	Bolts, motor	Steel/plated	13K252			4
383	Mechanical seal		See mechanical seal chart on page 2			1
408	Drain and vent plug, casing	AISI 316 SS	6L3			2
412B	O-ring, drain plugs	Viton, standard	5L99			2
		EPR	5L80			
		BUNA	5L62			
		Teflon	5L100			
513	O-ring, casing	Viton standard	5K206			1
		EPR	5K193			
		BUNA	5K4			
		Teflon	5L98			
575	Pipe cap	304 SS	6K150			1
576	Spring retainer	316 SS	4K1221			1

* Flush access hole provided.

Note:
Optional seal flush components



Note:

Close-coupled units using motors ½ – 1 HP (TEFC and ODP) will use footed motor adapter as standard.

Close-coupled units using motors 1½ – 3 HP (TEFC and ODP) will use footless motor adapter as standard.

Close-coupled units using motors 5 HP and all explosion-proof will have a foot attached to the motor.

NPE standard impellers

For units built after January 6, 2020

Impeller code	Pump size					
	1 x 1¼ – 6		1¼ x 1½ – 6		1½ x 2 – 6	
	Diameter	Part no.	Diameter	Part no.	Diameter	Part no.
A	6⅞	2K1203	6⅞	2K1391	5⅞	2K1401
B	5¾	2K1202	5 ¹⁵ / ₁₆	2K1392	5	2K1402
C	5 ³ / ₁₆	2K1201	5¾	2K1393	4¾	2K1403
D	4¾	2K1200	5 ¹¹ / ₃₂	2K1394	4½	2K1404
E	4 ⁷ / ₁₆	2K1199	5 ¹ / ₁₆	2K1395	4 ³ / ₈	2K1405
F	4 ¹ / ₁₆	2K1211	4 ⁷ / ₈	2K1396	4	2K1406
G			4 ⁵ / ₈	2K1397	3 ⁵ / ₈	2K1407
H			4¼	2K1398		
J			4	2K1399		

NPE close-coupled motors

Model NPE 3500 RPM

HP	Single-phase, 60 Hz, 115/230 V**, 56J frame								
	Open, drip-proof ①			Totally enclosed, fan cooled			Explosion proof		
	Order No.	Max. Amps	Wt. (lbs.)	Order No.	Max. Amps	Wt. (lbs.)	Order No.	Max. Amps	Wt. (lbs.)
½	E04853S	10.0/5.0	16	E04821S	6.2/3.1	21	BBC04825	6.2/3.1	47
¾	E05853S	14.0/7.0	19	E05821S	8.8/4.4	24	BBC05825	8.8/4.4	41
1	E06853S	16.0/8.0	22	E06821S	11.6/5.8	26	BBC06825	11.6/5.8	49
1½	E07858S	21.4/10.7	31	E07821S	16.2/8.1	35	BBC07825	16.2/8.1	56
2	E08854S	26.8/13.4	36	E08821S	20.8/10.4	39	BBC08825	20.8/10.4	60
3	E09854S	14.0	40	E09821S	11.89	44			
5	E10A12D1EB1G	14.4	55						

Note:** 3 and 5 HP single-phase motors are 230 V only.

HP	Three-phase, 60 Hz, 208-230/460 V, 56J frame								
	Open, drip-proof ①			Totally enclosed, fan cooled			Explosion proof		
	Order no.	Max. Amps	Wt. (lbs.)	Order no.	Max. Amps	Wt. (lbs.)	Order no.	Max. Amps	Wt. (lbs.)
½	E04873S	2.6/1.3	19	E04876S	1.9/.95	18	BBC04875	1.9/.95	27
¾	E05873S	3.4/1.7	19	E05876S	2.3/1.15	21	BBC05875	2.3/1.15	30
1	E06873S	4.2/2.1	22	E06D32E5HB5G	3.2/1.6	21	K06C32E6EB1S	3.2/1.6	30
1½	E07878S	5.8/2.9	25	E07D32E5HB4G	4.8/2.4	27	K07C32E6EB1S	4.8/2.4	37
2	E08874S	6.9/3.3	39	E08D32E5HB3G	5.4/2.7	33	F08C32E6EB1G	5.4/2.7	44
3	E09874S	7.2/3.6	31	E09D32E5HB2G	7.6/3.8	37			
5	E10774S	7.2/14.4	50	K10D32E2EB1G	6.2/12.4	48			
7.5				K11A32E5BT1S***	16.8/8.4	96			

① For vertical mounting order motor canopy separately - 9K272 for ½, ¾ and 1 HP single-phase or 9K273 for all other ODP motors

Note: *** K11A32E5BT1S is 184CZ frame, 180 frame with 56 shaft. NPE-F, frame mounted configurations were discontinued in August 2025.

Model NPE 1750 RPM

HP	Single-phase, 60 Hz, 115/230 V, 56J frame								
	Open, drip-proof ①			Totally enclosed, fan cooled			Explosion proof		
	Order no.	Max. amps	Wt. (lbs.)	Order no.	Max. amps	Wt. (lbs.)	Order no.	Max. amps	Wt. (lbs.)
½	E04811	8.6/4.3	19	E04812	8.0/4.0	20	BBC04815	8.0/4.0	45
¾	C05811BM	11.4/5.7	33	C05812BM	9.8/4.9	33	E05A14B3BB1S	10.6/5.3	48

HP	Three-phase, 60 Hz, 208-230/460 V, 56J frame								
	Open, drip-proof ①			Totally enclosed, fan cooled			Explosion proof		
	Order no.	Max. amps	Wt. (lbs.)	Order no.	Max. amps	Wt. (lbs.)	Order no.	Max. amps	Wt. (lbs.)
½	E04831	3.76/4.0/2.0	20	E04C34E2EB1G	1.77/1.6/.8	20	BBC04835	1.77/1.6/.8	45
¾	C05831	3.6-3.4/1.7	27	BM05832	3/1.5	28	E05A34E3BB2S	3.3-3/1.5	33

Note: Explosion proof motors are class 1 and 2, Group D

Xylem Inc.

www.xylem.com/goulds

This information is subject to change without notice. All information presented herein is believed reliable and in accordance with accepted engineering practices. Xylem makes no warranties as to the completeness of this information. Users are responsible for evaluating individual product suitability for specific applications. Xylem assumes no liability whatsoever for any special, indirect or consequential damages arising from the sale, resale or misuse of its products.

© 2021 - 2025 Xylem is a registered trademark of Xylem Inc. or one of its subsidiaries. Goulds Water Technology is a registered trademark of ITT Manufacturing Enterprises LLC and is used under license. All other trademarks or registered trademarks are the property of their respective owners.

Learn more about
NPE centrifugal
pumps:



xylem
Let's Solve Water