



optimize™

CONDITION MONITORING SOLUTIONS TO OPTIMIZE YOUR BOTTOM LINE



The optimize™ modular condition monitoring solution provides health guidance and predictive maintenance advice for rotating and fixed assets such as pumps, motors, heat exchangers and steam traps. It periodically monitors system vibration and temperature allowing everyday users to access simple-to-use monitoring tools from iOS or Android mobile devices.

Using predictive analysis, optimize identifies potential problems with your equipment before they occur, to help you manage system reliability and maintenance. Asset health information is collected, stored and analyzed in the optimize sensor. This allows you to understand the current health and historical trends of your assets, create maintenance reminders and generate detailed reports. As a result, you can perform preventative maintenance before issues become critical to uptime.

And, with optimize Gateway you now have true remote connectivity and mobile device access without having to be within Bluetooth® range. You can access data anytime, anywhere...24/7. With the addition of Xylem's Avensor Smart Monitoring Platform, you'll have 24/7 monitoring using our dedicated web application.

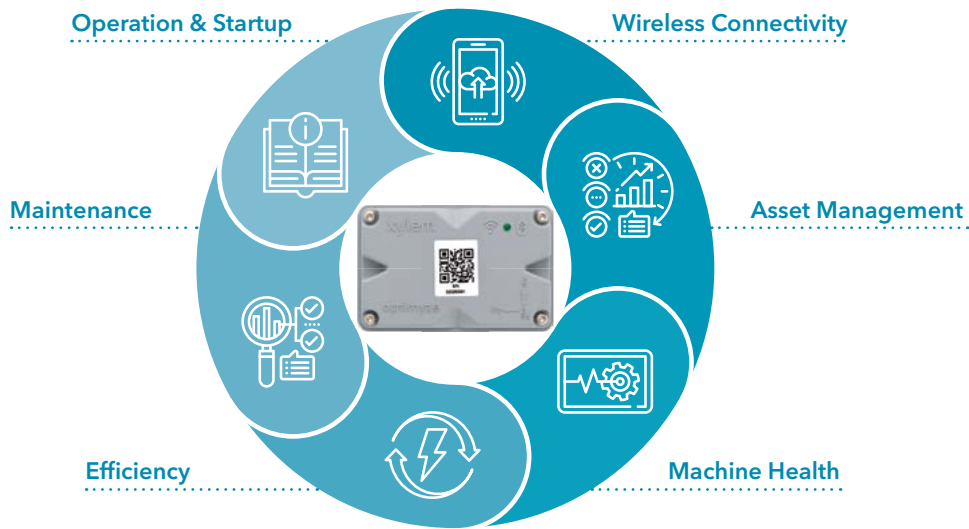
Benefits:

- Condition monitoring of your mechanical and electrical assets enabling predictive maintenance
- Asset management including asset location, maintenance logs, size, manufacturing date, and reminders
- Asset health transparency to optimize reliability
- Optimized reporting that helps to simplify documentation, manage system maintenance and inform purchasing
- The ability to automatically share data with multiple local users
- Conveniently monitor system conditions on our simple-to-use mobile application
- True remote monitoring via the optimize Gateway
- Simple setup using your mobile device
- Remote monitoring via the optimize mobile application or Avensor Smart Monitoring Web application

Industries:

- Commercial Building Services
- Industrial
- Agriculture
- Water Utilities

Optimize the way you work



optimize solutions to meet your needs

Condition Monitoring





- Periodic vibration and temperature measurement
- RMS, Kurtosis and FFT (Fast Fourier Transform)
- Instant health guidance using ISO or ANSI/HS vibration standards
- Graphical trending
- Maintenance reminders and logs
- Report generation and asset documentation

Asset Lifecycle Management

- Overview of assets across stations and sites
- Visibility of other key assets and controllers
- Analytics and data export capability
- Alarm and user management
- Connection to SCADA or BMS via OPC UA connector or machine to machine API

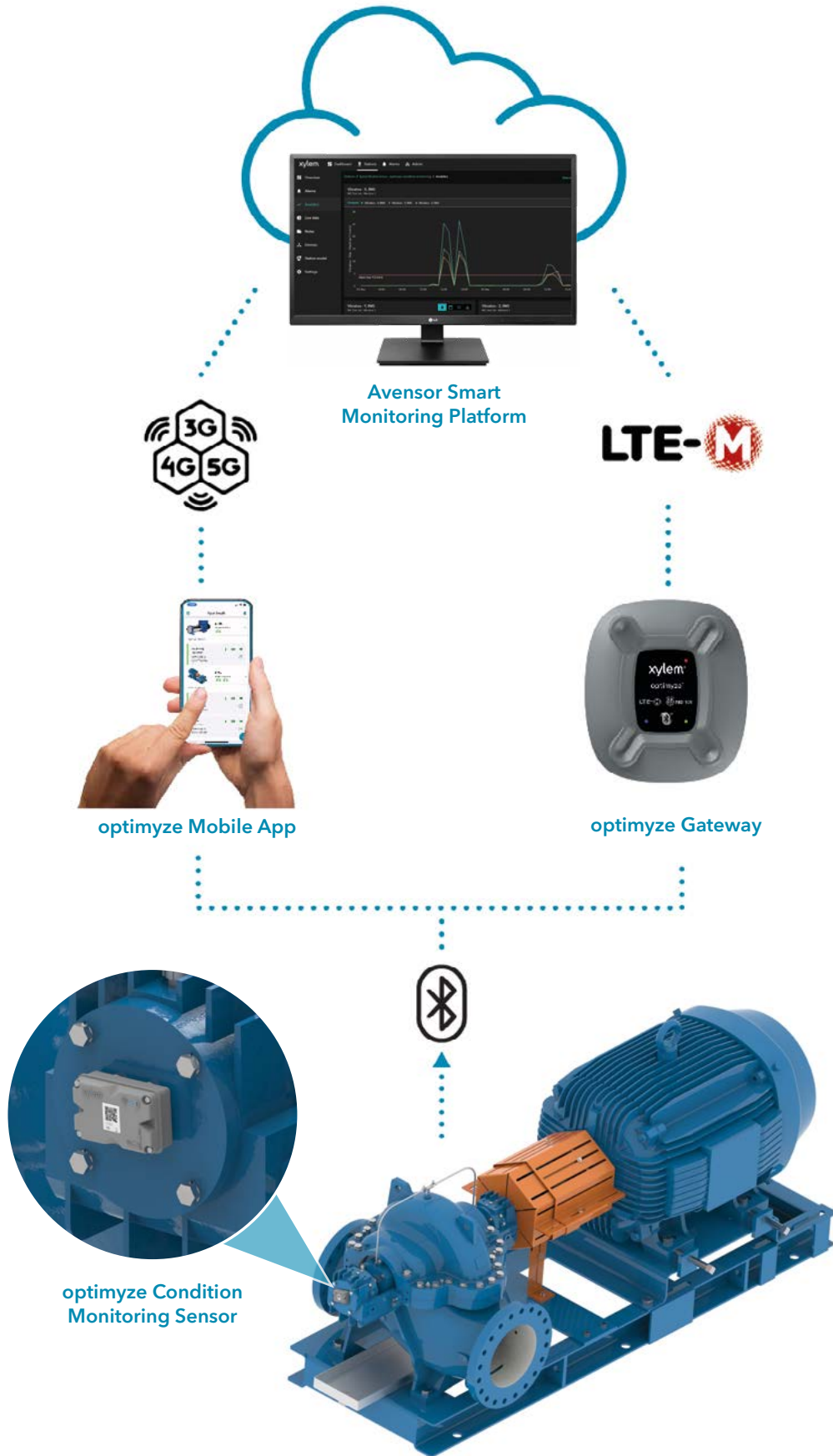
Remote Monitoring

- 24/7 access to asset health information
- One-button pairing and setup
- Cellular LPWAN Connectivity providing effective coverage inside buildings and basements

| |  optimize Sensor |  optimize Mobile App |  Avensor Smart Monitoring Platform* |  optimize Gateway* |
|----------------------------|--|---|--|---|
| Condition Monitoring | ✓ | ✓ | | |
| Asset Lifecycle Management | ✓ | ✓ | ✓ | |
| Remote Monitoring | ✓ | ✓ | ✓ | ✓ |

*Annual subscription required (1st year included)

optimize™ CONDITION MONITORING AND OPTIMIZATION



optimize™ CONDITION MONITORING AND OPTIMIZATION

optimize Sensor Specifications

Surface Temperature Measurement

| | |
|--|----------------------------------|
| Measurement range | -20°C to +135°C (-4°F to +275°F) |
| Measurement method | Non-contact infrared laser |
| Minor gradient accuracy (0°C to 25°C gradient) | +/- 1°C |
| Moderate gradient accuracy (25°C to 50°C gradient) | +/- 2°C |
| Large gradient accuracy (50°C to 100°C gradient) | +/- 4°C |

Vibration Measurement

| | |
|------------------------------------|--------------------|
| Frequency range | 5Hz to 1,100Hz |
| Measurement method | Independent 3-axis |
| Primary output (per axis) | Single value RMS |
| Other outputs | Kurtosis and FFT |
| Vibration limit (max acceleration) | 16g |
| Threshold standard (Global) | ISO 10816-7 |
| Threshold standard (North America) | ANSI/Hi 9.6.4 |

Power

| | |
|--|-------------------------------|
| Batteries (replaceable) | (2) 3.6V AA, 2400mAh, Lithium |
| Battery life (using default sampling rate at 25°C) | 3 to 5 years |
| Default sampling rate | 1 sample per 30 minutes |
| Available sampling rates (one sample per unit of time) | 10 seconds to 12 hours |

Wireless Communication

| | |
|---|--|
| Network type | Bluetooth® Low Energy 5.0 ¹ |
| Connection range (without interference) | 30 meters (100 feet) |

Environmental

| | |
|--|----------------------------------|
| Ambient operating range | -20°C to +50°C (-4°F to +122°F) |
| Storage temperature (5 to 95% humidity non-condensing) | -25°C to +65°C (-13°F to +149°F) |
| Protection rating | IP56, NEMA 4 |

Physical Properties

| | |
|----------------------------|--|
| Weight | 145g (0.32 lbs.) |
| Status | LED |
| Mounting method (standard) | Magnetic (16mm potted magnets) |
| Mounting method (optional) | Drill and tap with plate |
| Dimensions | 88.6mm x 56.9mm x 35.4mm (3.49in x 2.24in x 1.39in) |

Certifications

| | |
|-----------------------------|------------------------------|
| Certifications | CE, FCC, UL |
| Intended use (environments) | Non-hazardous, non-corrosive |

¹Backwards compatible up to Bluetooth® Low Energy 4.2

Xylem Product Cybersecurity
Xylem values your system security and the availability of your critical services. For more information on Xylem cybersecurity practices or to contact the cybersecurity team please visit Xylem.com/security.

optimize Gateway Specifications

Wireless Communication

| | |
|---|--|
| Network type | Bluetooth® Low Energy 4.2 |
| Bluetooth Connection Range (without interference) | 30 meters (100 feet) |
| Cellular | Category LTE-M |
| External Antenna | For Bluetooth® – 2.4 GHz Dipole; For LTE – Dipole |

Environmental

| | |
|-----------------------------|----------------------------------|
| Intended use (environments) | Non-hazardous, non-corrosive |
| Operating temperature | -40°C to +80°C (-40°F to +176°F) |
| Operating humidity | 10 to 95% non-condensing |
| Storage temperature | -40°C to +85°C (-40°F to +185°F) |
| Storage temperature | 5 to 95% non-condensing |
| Protection Rating | NEMA 1, IP30 |

Physical Properties

| | |
|----------------------------|--|
| Weight | 0.518 lbs. |
| Mounting method (standard) | Tabletop or wall mount with mounting screws |
| Dimensions | 110.28mm x 99.16mm x 35.32mm (4.34in x 3.90in x 1.39in) |

Certifications

| | |
|------------|-------------------------|
| Regulatory | CE, FCC, ISED, and UKCA |
| Industry | PTCRB, GCF |

For Avensor specifications visit: www.xylem.com/avensor

Part Numbers

| | |
|---|----------|
| optimize sensor | P2007024 |
| optimize optional power supply | P2007066 |
| optimize battery replacement kit | P2007030 |
| optimize optional flat plate mounting kit | P2007031 |
| optimize Gateway | P2007065 |
| optimize Gateway power supply | P2007067 |



Digital transformation starts with Xylem Vue

Digital adoption is no longer an option; it's an urgent reality to meet the increasing pressures you face. optimize is an important part of our full suite of digital solutions, Xylem Vue, that combines smart and connected technologies, intelligent systems and services, and 100+ years of problem-solving expertise. Xylem Vue helps solve your most pressing water challenges and deliver transformative outcomes for your communities – faster and more affordably. Let's see what's possible for you, and let's do it together.

For more information on Xylem Vue, go to xylem.com/XylemVue



Xylem Inc.
Phone: (866) 673-0428
Fax: (888) 322-5877
www.xylem.com

Xylem and optimize™ are trademarks of Xylem, Inc. or one of its subsidiaries. The Bluetooth® word mark and logos are registered trademarks owned by Bluetooth SIG, Inc. and any use of such marks by Xylem Inc., Laird Connectivity or one of their subsidiaries is under license. All other trademarks or registered trademarks are property of their respective owners.

Order Online: www.PumpCatalog.com

