

# **BALDOR**® • *RELIANCE*

## **Product Information Packet**

# **AEM4307-4**

**40HP, 1780RPM, 3PH, 60HZ, 364U, 1448M, TEFC, F1**

Part Detail							
Revision:	H	Status:	PRD/A	Change #:		Proprietary:	No
Type:	AC	Prod. Type:	A36050M	Elec. Spec:	A36WG0744	CD Diagram:	416820-036
Enclosure:	TEFC	Mfg Plant:		Mech. Spec:		Layout:	617428-014
Frame:	364U	Mounting:	F1	Poles:	04	Created Date:	10-19-2010
Base:		Rotation:	R	Insulation:	F	Eff. Date:	06-08-2016
Leads:	3#6					Replaced By:	
Literature:		Elec. Diagram:					

<b>Nameplate NP2492L</b>											
<b>SPEC NO.</b>	P36G3112			<b>CAT.NO.</b>	AEM4307-4			<b>FRAME</b>	364U		
<b>HP</b>	40	<b>VOLTS</b>	460	<b>PHASE</b>	3	<b>DESIGN</b>	B	<b>TYPE</b>	P		
<b>RPM</b>	1785	<b>AMPS</b>	45	<b>HZ</b>	60	<b>AMB</b>	65	<b>SF</b>	1.00		
<b>DRIVE END BEARING</b>	65BC03JPP30A			<b>LUBRICATION</b>	MOBIL POLYREX EM		<b>DUTY</b>	CONT		<b>INSUL.CLASS</b>	F
<b>OPP D.E. BEARING</b>	65BC03JPP30A			<b>ENCL</b>	TEFC		<b>CODE</b>	G			
<b>AMB</b>	65	<b>ALERNATE RATING-S.F.</b>	1.00	<b>ALTITUDE</b>	3300		<b>NEMA-NOM-EFF</b>	94.5			
<b>SER.NO.</b>				<b>GUARANTEED EFFICIENCY</b>	93.6						
	<b>MOTOR WEIGHT</b>			874							
				CAT# AEM4307-4							

Parts List		
Part Number	Description	Quantity
SA209347	SA P36G3112	1.000 EA
RA196609	RA P36G3112	1.000 EA
000692000VD	LABEL WARNING	1.000 EA
078550004T	FAN OUTER E320 BRONZE 13.5" OD DIA.	1.000 EA
004824015A	GREASE POLYREX EM	0.544 LB
032018008AK	HHCS 1/4-20X1 PLATED	4.000 EA
032018012DK	HHCS 1/2-13X1-1/2 PLTD.	4.000 EA
032018024CK	HHCS 3/8-16X3 PLTD.	3.000 EA
034180012DA	KEY 1X4X1/4X1-1/2 L	1.000 EA
034530052AB	P/NIP 1/8X6-1/2 GALV.	1.000 EA
034690001AB	SQHDPLG, COND	1.000 EA
034690002AB	"unbulked" PPLG 1/4" PLTD.	1.000 EA
034690002AB	"unbulked" PPLG 1/4" PLTD.	1.000 EA
085922073B	BRKT 360 085922072WCC KB	1.000 EA
078559001A	+FANCV - 360	1.000 EA
085922073B	BRKT 360 085922072WCC KB	1.000 EA
410700004F	WSHR	1.000 EA
415045002E	SLGR	1.000 EA
415096002A	CPLG 1/8 HEX TYPE	1.000 EA
418151057A	PLASTIC DRAIN,ODE BRKT	1.000 EA
032018012DK	HHCS 1/2-13X1-1/2 PLTD.	4.000 EA
032018024CK	HHCS 3/8-16X3 PLTD.	3.000 EA
032018010CK	HHCS 3/8-16X1-1/4 PLTD.	4.000 EA
415045002E	SLGR	1.000 EA

Parts List (continued)		
Part Number	Description	Quantity
415096002A	CPLG 1/8 HEX TYPE	1.000 EA
418151057A	PLASTIC DRAIN,ODE BRKT	1.000 EA
033512004LB	HHTTS 1/4-20X1/2 PLTD.	1.000 EA
033512008LB	HHTTS 1/4-20X1 PLATED	4.000 EA
034000014AB	WSH ID.406 OD.812 TH.065	4.000 EA
065776000C	TERBD 320-400	1.000 EA
067053000B	GASK 320-400	1.000 EA
076708000BB	C/B - 360	1.000 EA
076709000A	C/B - 360	1.000 EA
406099000A	PLUG - FAN COVER 320-440	1.000 EA
415000103D	T/LUG #4AWG-1/0AWG W/HOLE FOR .250 BOLT	1.000 EA
MG1025G05	WILKOFAS, 789.227, MED. GRAY CHAR. MET.	0.250 GA
033775004EA	DRSCR #6-1/4 304 S.S.	4.000 EA
034530020AB	P/NIP 1/8X2-1/2 PLTED	1.000 EA
034690001AB	SQHDPLG, COND	1.000 EA
034180034GA	KEY 1/2X1/2X4-1/4 L	1.000 EA
NP2492L	CP, SUPER-E, SS, CSA, ALT. RATING,	1.000 EA
421948051	LABEL, MYLAR	1.000 EA
14PA1000	PACKAGING 314 GROUP COMBINED PRINT	1.000 EA
000613006PU	N/P (RELEASE QTY 10,000) UL CSA LABLE	1.000 EA

REL. S.O.	FRAME	HP	TYPE	PHASE/HERTZ	RPM	VOLTS
	364U	40	P	3/60	1785	460
AMPS	DUTY	AMB °C/ INSUL.	S.F.	NEMA DESIGN	CODE LETTER	ENCL.
45	CONT	65/F	1.00	B	G	TEFC
E/S	ROTOR	TEST S.O.	TEST DATE	STATOR RES. @25 °C (OHMS (BETWEEN LINES))		
591795	418141-35-BE	---	---	.173		

PERFORMANCE

LOAD	HP	AMPERES	RPM	POWER FACTOR %	EFFICIENCY %
NO LOAD	0	13.3	1800	5.22	0
1/4	10.0	17.1	1796	59.3	92.3
2/4	20.0	25.1	1792	78.9	94.7
3/4	30.0	34.6	1787	85.6	95.0
4/4	40.0	45.0	1782	88.0	94.6
5/4	50.0	56.3	1777	88.6	93.9

SPEED TORQUE

	RPM	TORQUE % FULL LOAD	TORQUE LB.-FT.	AMPERES
LOCKED ROTOR	0	180	212	290
PULL UP	915	157	185	256
BREAKDOWN	1706	252	297	165
FULL LOAD	1782	100	118	45.0

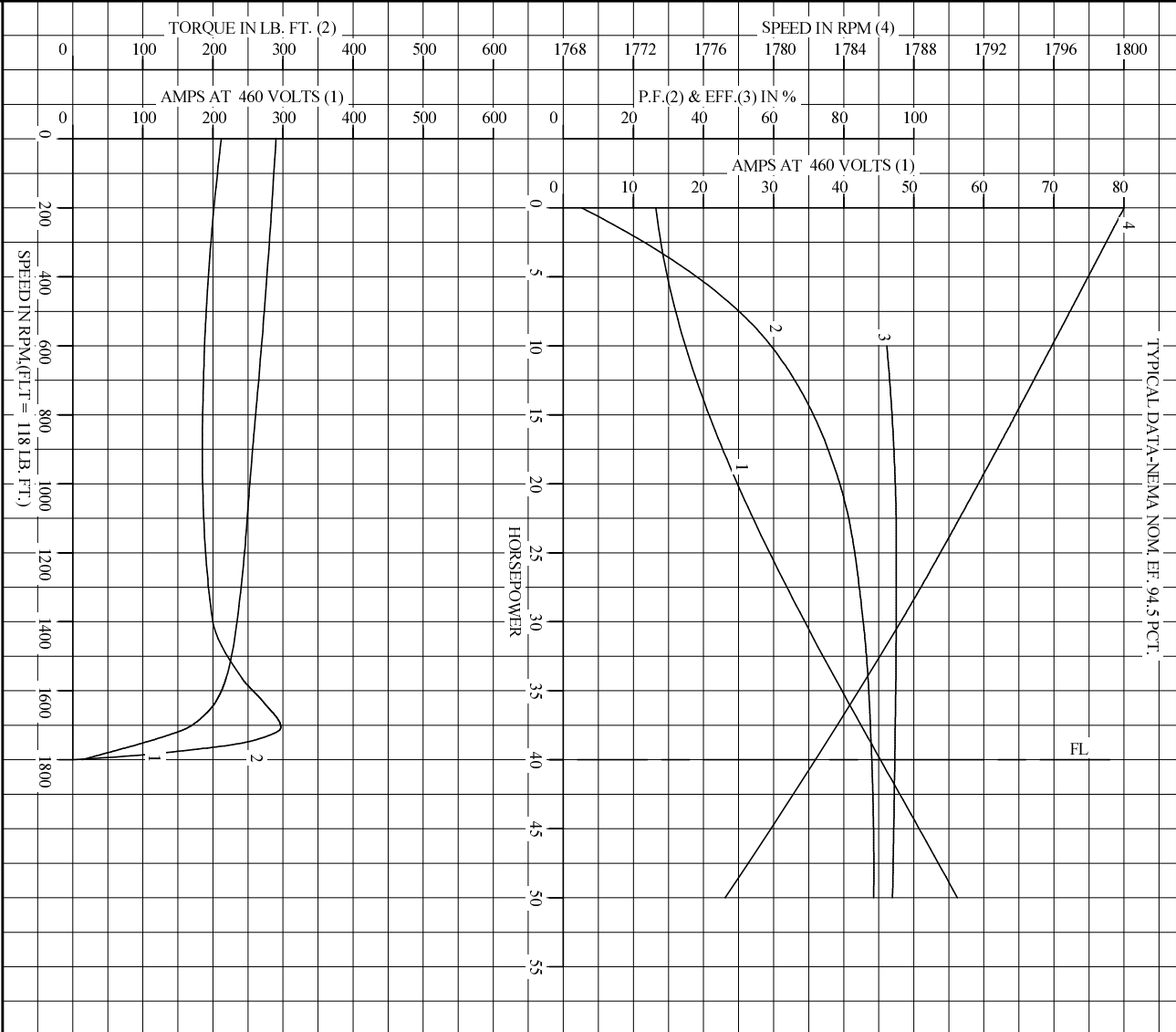
AMPERES SHOWN FOR 460. VOLT CONNECTION. IF OTHER VOLTAGE CONNECTIONS ARE AVAILABLE, THE AMPERES WILL VARY INVERSELY WITH THE RATED VOLTAGE

REMARKS: TYPICAL DATA  
TYPICAL DATA-NEMA NOM. EF. 94.5 PCT.

<b>BALDOR</b>	DR. BY P.B. GREENE	<b>A-C MOTOR</b>	
	CK. BY C.P. WILLIAY		<b>PERFORMANCE</b>
	APP. BY C.P. WILLIAY		<b>DATA</b>
DATE 01/14/92		ISSUE DATE 12/15/10	

A-C MOTOR  
PERFORMANCE DATA  
A36WG0744-R001  
ISSUE DATE 12/15/10

REL. S.O. \_\_\_\_\_ RPM 1785 S.F. 1.00 ROTOR 418141-35-EE  
 FRAME 364U VOLTS 460 NEMA DESIGN B TEST S.O. TYPICAL DATA  
 HP 40 AMPS 45 DUTY CONT G TEST DATE ---  
 TYPE P AMB °C/INSUL 65/F ENCLOSURE TEFC STATOR RES. @ 25 °C .173  
 PHASE/HERTZ 3/60 E/S 591795 OHMS (BETWEEN LINES)



AMPERES SHOWN FOR 460 VOLT CONNECTION, IF OTHER VOLTAGE CONNECTIONS ARE AVAILABLE, THE AMPERES WILL VARY INVERSELY WITH THE RATED VOLTAGE.

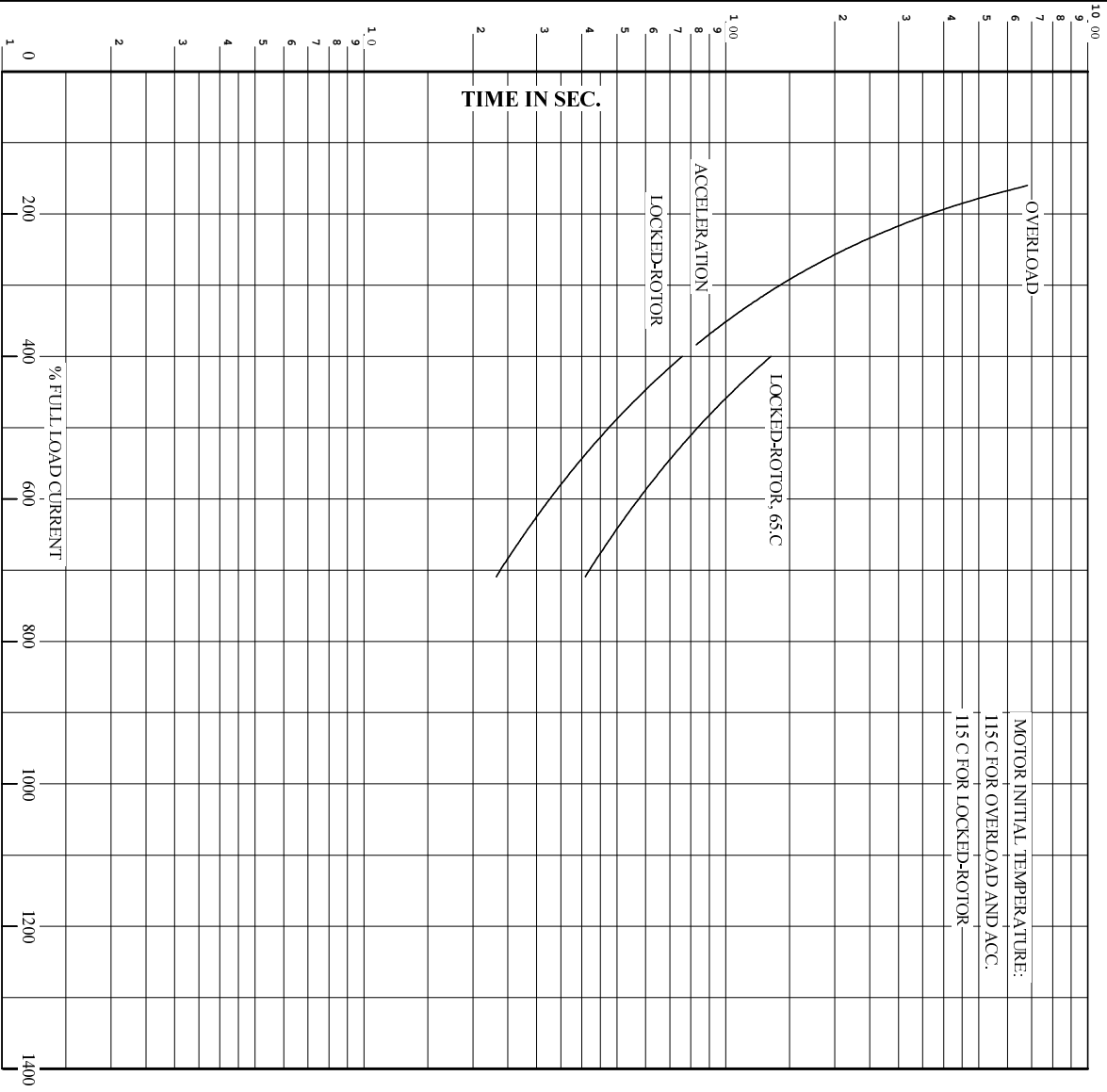
**BALDOR**

DR. BY P.B. GREENE  
 CK. BY C.P. WILBY  
 APP. BY C.P. WILBY  
 DATE 01/14/92

**A-C MOTOR PERFORMANCE CURVES** A36WG0744R001  
 ISSUE DATE 12/15/10

Printed on 12/15/10 9:16 @ psecs-motoreng

RET. S.O. RPM 1785 S.F. 1.00 ROTOR 418141-35-EE  
 FRAME 364U VOLTS 460 NEMA DESIGN B TEST S.O. TYPICAL DATA  
 HP 40 AMPS 45 CODE LETTER G TEST DATE ---  
 TYPE P DUTY CONT ENCLOSURE TEFC STATOR RES. @ 25 °C. 1.73  
 PHASE/HERTZ 3/60 AMB °C/INSUL 65/F E/S 591795 OHMS (BETWEEN LINES)



REMARKS: THERMAL LIMIT CURVE  
 TYPICAL DATA-NEMA NOM. EF. 94.5 PCT.

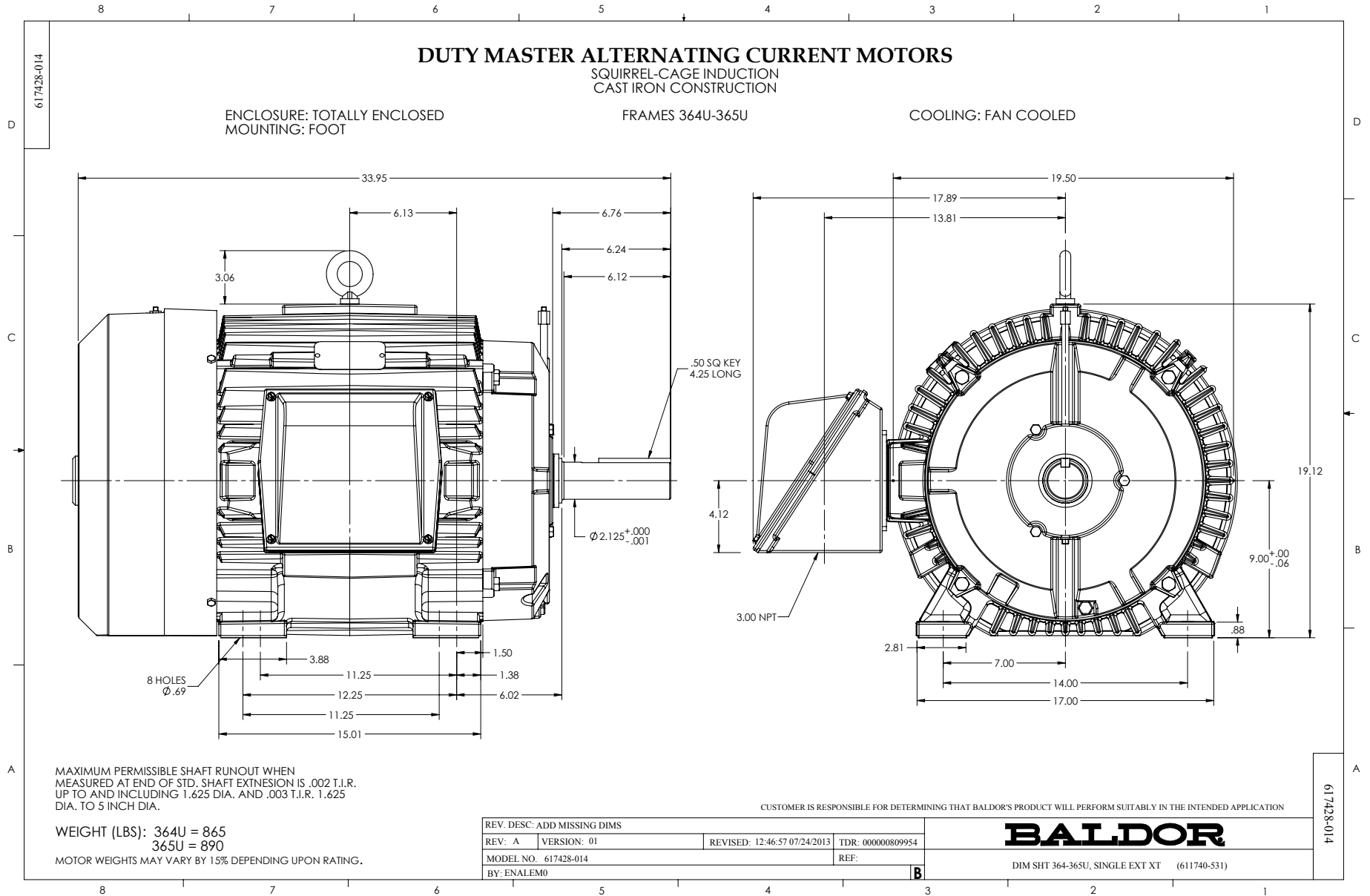
AMPERES SHOWN FOR 400 VOLT CONNECTION, IF OTHER VOLTAGE CONNECTIONS ARE AVAILABLE, THE AMPERES WILL VARY INVERSELY WITH THE RATED VOLTAGE.



DR. BY P.B. GREENE  
 CK. BY C.P. WILLIAMS  
 App. BY C.P. WILLIAMS  
 DATE 01/14/92

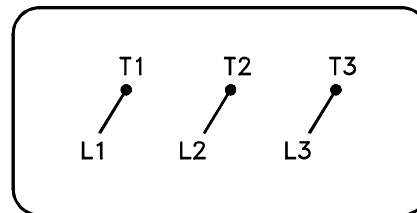
**A-C MOTOR**  
**PERFORMANCE** A36WG0744-R001  
**CURVES** ISSUE DATE 12/15/10





416820-036

A-C MOTOR  
 CONNECTION DIAGRAM  
 STANDARD 3 LEAD CONNECTED



(N.P. 1575-BA)

416820-036

REV. DESC: LOADED TO BUS, C/R 335225		
REV. LTR: -	VERSION: 00	TDR: 000000538207
FILE: \MGA\00000\682	REVISED: 11:54:06 04/30/2010	
MTL: -	BY: RAGRA	

**BALDOR**

CONN DIAG - STANDARD 3 LEAD

SH 1 of 1

Marketing maintained PDF of MN408:

<http://www.baldor.com/support/Literature/Load.ashx/MN408?ManNumber=MN408>

Marketing maintained PDF of MN416:

<http://www.baldor.com/support/Literature/Load.ashx/MN416?ManNumber=MN416>