

BALDOR® • RELIANCE

Product Information Packet

CDP3590

2HP,2500RPM,DC,145TC,3536P,TEFC,F1

| Part Detail | | | | | | | |
|-------------|-------|-------------|-------|----------------|----------|---------------|------------|
| Revision: | U | Status: | PRD/A | Change #: | | Proprietary: | No |
| Type: | DC | Prod. Type: | | Elec. Spec: | 35WGZ182 | CD Diagram: | CD0194 |
| Enclosure: | TEFC | Mfg Plant: | | Mech. Spec: | 35P432 | Layout: | 35LYP432 |
| Frame: | 145TC | Mounting: | F1 | Poles: | /// | Created Date: | |
| Base: | RG | Rotation: | R | Insulation: | F | Eff. Date: | 10-01-2015 |
| Field Type: | | Literature: | | Elec. Diagram: | | Replaced By: | |

| Nameplate NP0891L | | | |
|-------------------|----------------------------|----------|----------------------------|
| CAT.NO. | CDP3590 | | |
| SPEC. | 35P432Z182 | | |
| HP | 2 | ENCL | TEFC |
| RPM | 2500 | | |
| FRAME | 145TC | TYPE | 3536P |
| ARM V | 180 | ARM A | 10 |
| FLD V | | FLD A | |
| INSUL | F | AMB. | 40 |
| DUTY | CONT | SUPPLY | K |
| BRG/DE | 6205 | BRG/ODE | 6205 |
| BRUSHES | 2/BP5000T15 | | |
| SER. | | BLANK | IP44 |
| BLANK | | | |
| APRV-CE | <input type="checkbox"/> Y | APRV-CSA | <input type="checkbox"/> Y |
| | | APRV-UL | <input type="checkbox"/> Y |

| Parts List | | |
|---------------|--|----------|
| Part Number | Description | Quantity |
| SA005506 | SA 35P432Z182 | 1.000 EA |
| AA003155 | AA 35P432Z182 | 1.000 EA |
| BP5000T15SP | CARBON BRUSH-35P,180VOLTS | 1.000 EA |
| 11XW1032G06 | 10-32 X .38, TAPTITE II, HEX WSHR SLTD U | 1.000 EA |
| HW3001B02 | BRASS CUP WASHER W/GROUND SYMBOL TAB, | 1.000 EA |
| 35EP3110A02 | FR ENDPLATE, MACH | 1.000 EA |
| HW5100A05 | WVY WSHR F/205 & 304 BRGS | 1.000 EA |
| 35EP3301A01 | PU ENDPLATE, MACH | 1.000 EA |
| BP5201A14SP | BRUSH HOLDER ASSY | 1.000 EA |
| 80XN1032A03 | 10-32 X 3/16 SET SCREW | 2.000 EA |
| MJ5004A05 | #242-21 LOCTITE GENERAL PURPOSE MED. STR | 0.001 EA |
| 35FN3002A05 | EXFN, PLASTIC, 6.376 OD, .638 ID | 1.000 EA |
| 51XB1214A16 | 12-14X1.00 HXWSSLD SERTYB | 1.000 EA |
| 35FH5001A10SP | FAN COVER ASS'Y TEFC HORZ | 1.000 EA |
| 51XW1032A06 | 10-32 X .38, TAPTITE II, HEX WSHR SLTD S | 3.000 EA |
| WD4102A01 | SR-6L-1 HEYCO STRN RELIEF OR 23MPO6L10 M | 1.000 EA |
| WD4100A17 | PLUG STIMPSON D4036 | 1.000 EA |
| 35CB4506 | CONDUIT BOX LID, STAMPED | 1.000 EA |
| 35GS1010 | CONDUIT BOX LID, GASKET | 1.000 EA |
| 51XW0832A07 | 8-32 X .44, TAPTITE II, HEX WSHR SLTD SE | 2.000 EA |
| HW2501D13 | KEY, 3/16 SQ X 1.375 | 1.000 EA |
| HA7000A01 | KEY RETAINER 7/8" DIA SHAFT | 1.000 EA |
| 51XN1032A20 | 10-32 X 1 1/4 HX WS SL SR | 2.000 EA |
| MG1000G27 | MED CHARCOAL METALLIC GREY 400-0096 | 0.017 GA |

| Parts List (continued) | | |
|-------------------------------|--|-----------------|
| Part Number | Description | Quantity |
| 10XF0440S02 | 04-40 X 1/8 TYPE F HEX HD STAINLESS STIC | 2.000 EA |
| HA3101A46 | tHRUBOLT- 1/4-20 X 10.00 X | 4.000 EA |
| ML1424A14 | UL3321,150C,14 GA,WHITE, #A1 | 11.000 IN |
| ML1425A14 | UL3321,150C,14 GA, WHITE, #A2 | 11.000 IN |
| MN416A01 | TAG-INSTAL-MAINT no wire (1200/bx) 11/14 | 1.000 EA |
| LB1119N | WARNING LABEL | 1.000 EA |
| NP0891L | NP STD LASER ENGRAVED DC MTRS, UL CSA CE | 1.000 EA |
| LC0194 | CONNECTION LABEL | 1.000 EA |
| 35PA1007 | PKG GRP, PRINT PK1034A06 | 1.000 EA |

| Accessories | | |
|--------------------|--------------------------|-------------------|
| Part Number | Description | Multiplier |
| TK3500 | TACHO MOUTING KIT TK3500 | A8 |

DC Motor Performance Data

Record # 387 - Typical performance - not guaranteed values

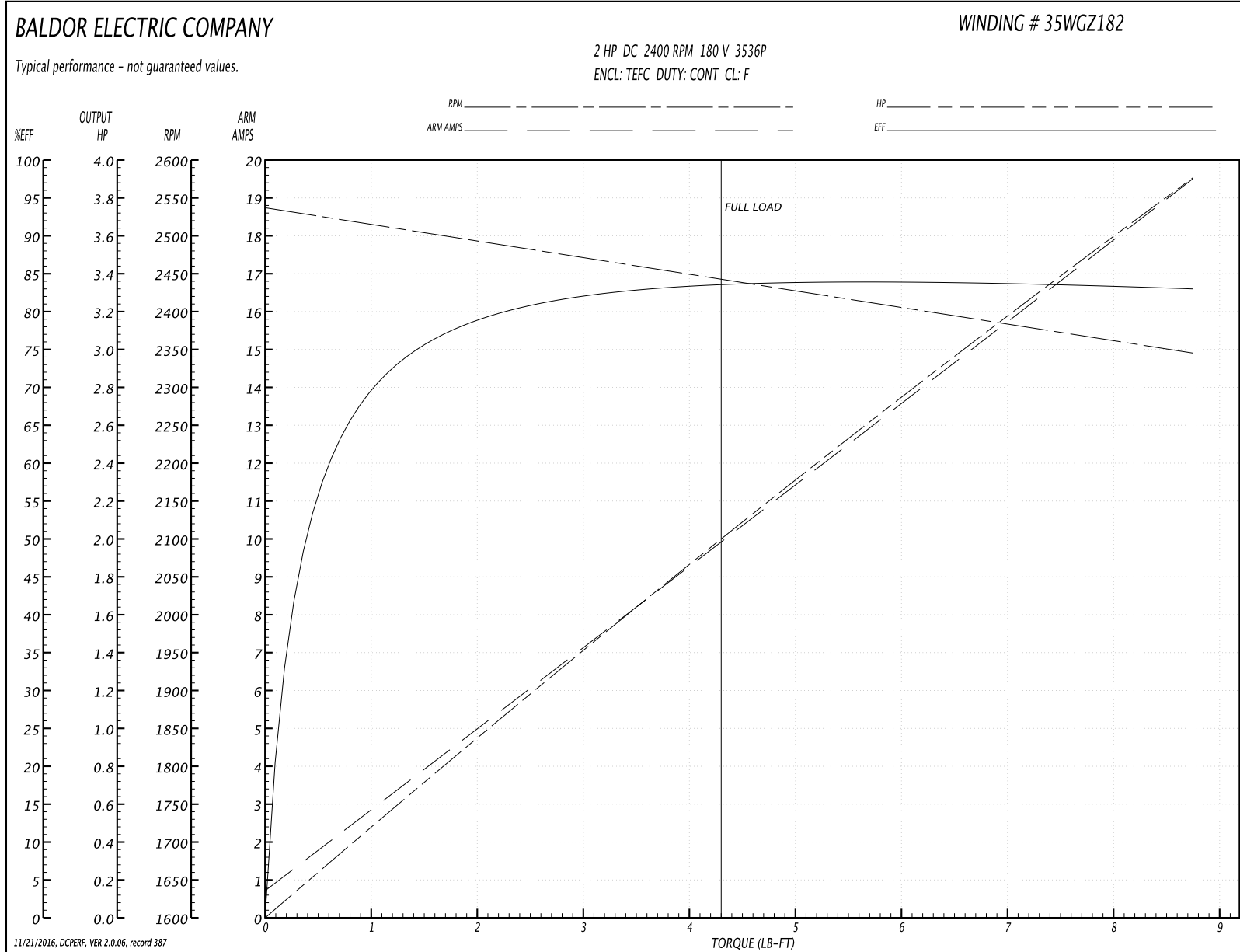
| | | |
|-------------------------------|--------------------|------------------------|
| Winding: 35WGZ182-R001 | Type: 3536P | Enclosure: TEFC |
|-------------------------------|--------------------|------------------------|

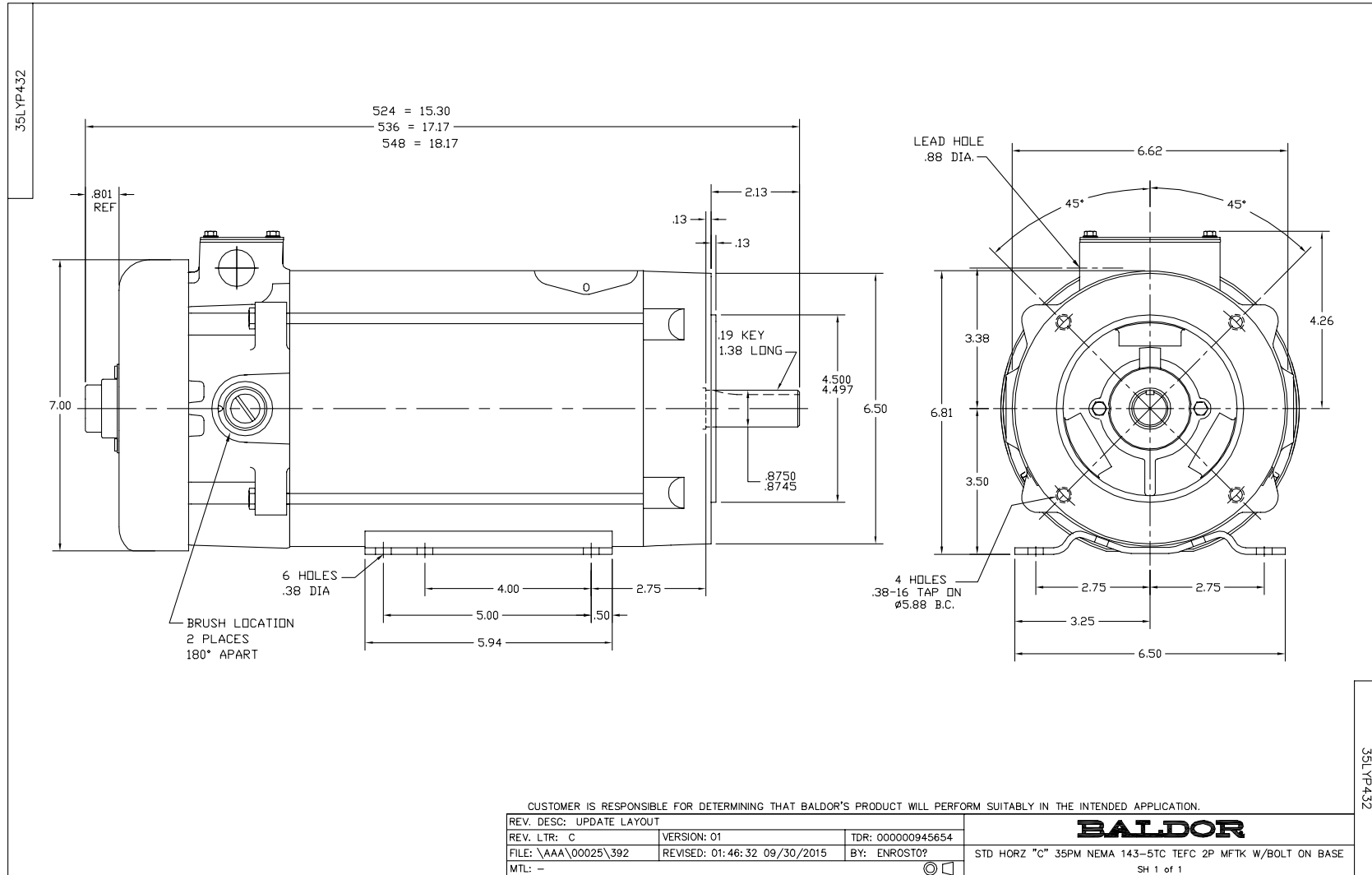
| Nameplate Data | | General Characteristics | |
|-------------------|--------------|----------------------------|-------------------------|
| Rated Output (HP) | 2 | Armature Resistance @ 25°C | 0.494 Ω |
| R.P.M. | 2400 | | |
| Armature Volts | 180 | Voltage Constant | 68.3 v/krpm |
| Armature Amps | 10 | | |
| Field Volts | | Armature Inductance | 6.797 mH |
| Field Amps | | Armature Inertia | 30.3419 LI ² |
| Rating - Duty | 40C AMB-CONT | | |
| Power Supply Code | K | | |
| | | | |

Load Characteristics at 180 Armature Volts

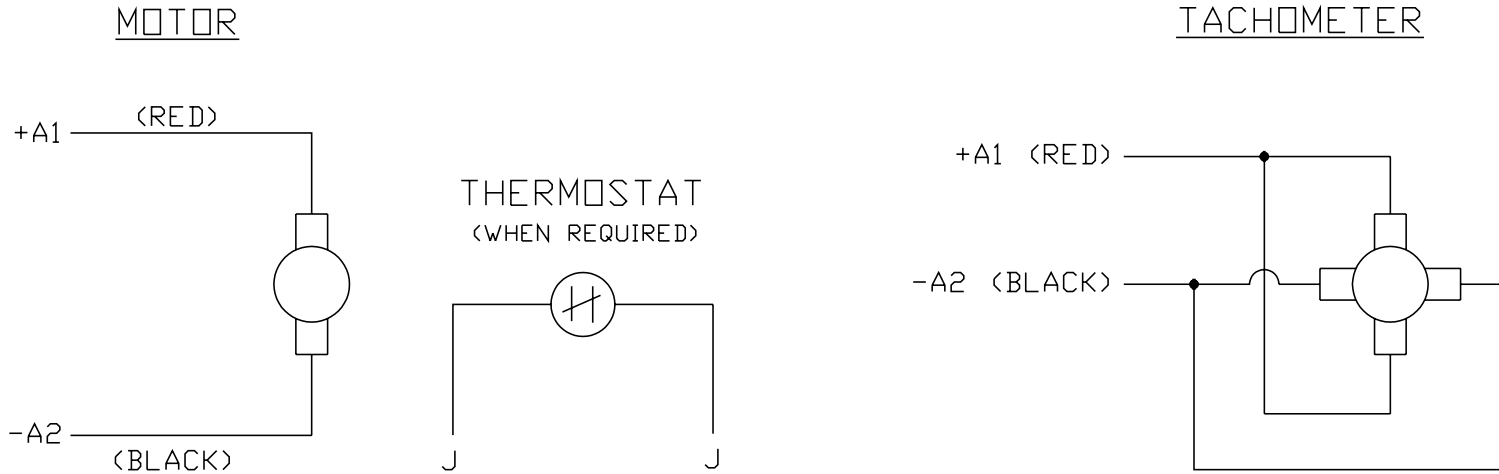
| Load Point | 1 | 2 | 3 | 4 | 5 | 6 | 7 |
|------------------|------|------|-------|-------|------|-------|------|
| Armature Amps | 0.7 | 5.5 | 8 | 10.2 | 12.5 | 14.7 | 19.6 |
| R.P.M. | 2514 | 2499 | 2483 | 2448 | 2416 | 2387 | 2335 |
| Torque (LB-FT) | 0 | 2.25 | 3.375 | 4.375 | 5.5 | 6.625 | 8.75 |

Performance Graph at 180.0 Arm V, 2.0HP Typical performance - Not guaranteed values





CD0194



NOTES:

1. CCW ROTATION AS SHOWN FACING COMMUTATOR END. TO REVERSE MOTOR ROTATION OR TACHOMETER OUTPUT POLARITY INTERCHANGE LEADS A1(RED) & A2(BLACK)
2. LEAD COLORS FOR REFERENCE ONLY & NOT SPECIFIED BY THIS DRAWING. LEAD COLORS SPECIFIED BY LAYOUT DRAWING & BILL OF MATERIAL ONLY.

| | | | |
|---------|--|--------------|-------------------|
| MATL: - | | | |
| REV: E | ADDED NOTE "LEAD COLORS FOR REFERENCE ONLY &..." | | |
| CD0194 | SCALE: - | BY: CK | REVISED: 07/28/95 |
| | FILE: AAA00004503 | TDR: 0078737 | |

BALDOR ELECTRIC Co.

CD TYPE P DC PERMANENT MAGNET MOTORS AND TACHOMETERS

CD0194