

BALDOR® • ***RELIANCE***

Product Information Packet

CDP3604

3HP,1750RPM,DC,184C,3649P,TEFC,F1

| Part Detail | | | | | | | |
|-------------|------|-------------|-------|----------------|----------|---------------|------------|
| Revision: | S | Status: | PRD/A | Change #: | | Proprietary: | No |
| Type: | DC | Prod. Type: | | Elec. Spec: | 36WGZ507 | CD Diagram: | CD0194 |
| Enclosure: | TEFC | Mfg Plant: | | Mech. Spec: | 36P183 | Layout: | 36LYP183 |
| Frame: | 184C | Mounting: | F1 | Poles: | /// | Created Date: | |
| Base: | RG | Rotation: | R | Insulation: | F | Eff. Date: | 08-17-2015 |
| Field Type: | | Literature: | | Elec. Diagram: | | Replaced By: | |

| Nameplate NP0891L | | | |
|-------------------|----------------------------|----------|----------------------------|
| CAT.NO. | CDP3604 | | |
| SPEC. | 36P183Z507 | | |
| HP | 3 | ENCL | TEFC |
| RPM | 1750 | | |
| FRAME | 184C | TYPE | 3649P |
| ARM V | 180 | ARM A | 14 |
| FLD V | | FLD A | |
| INSUL | F | AMB. | 40 |
| DUTY | CONT | SUPPLY | K |
| BRG/DE | 6206 | BRG/ODE | 6206 |
| BRUSHES | 2/BP5031A01 | | |
| | | BLANK | IP44 |
| SER. | | | |
| BLANK | | | |
| APRV-CE | <input type="checkbox"/> Y | APRV-CSA | <input type="checkbox"/> Y |
| | | APRV-UL | <input type="checkbox"/> Y |

| Parts List | | |
|---------------|--|----------|
| Part Number | Description | Quantity |
| SA108111 | SA 36P183Z507 | 1.000 EA |
| AA009785 | AA 36P183Z507 | 1.000 EA |
| HW3201A05 | 3/8-16 EYEBOLT | 1.000 EA |
| 19XM3118A08 | 5/16-18X1/2 HX HD ROLL FM#93882A578 MCMA | 4.000 EA |
| 36CB3000SP | CONDUIT BOX, CAST | 1.000 EA |
| 36GS1000 | GASKET-CONDUIT BOX, .06 THICK #SV-330 LE | 1.000 EA |
| 51XB1016A07 | 10-16 X 7/16 HXWSSLD SERTYB | 2.000 EA |
| 11XW1032G06 | 10-32 X .38, TAPTITE II, HEX WSHR SLTD U | 1.000 EA |
| HW3001B02 | BRASS CUP WASHER W/GROUND SYMBOL TAB, | 1.000 EA |
| 36EP3402A03 | SPL FR. E.P. MACH'G 36PM FOR (681P) STAC | 1.000 EA |
| 26XW1032A08 | 10-32 X 1/2 PHILLIPS HEAD TAPTITE-II (SI | 4.000 EA |
| HW5100A06 | W2420-025 WVY WSHR (WB) | 1.000 EA |
| 36EP1313A01 | STD PU ENDPLATE #206 BRG 182-4C 36PM | 1.000 EA |
| 10XN2520A28 | 1/4-20X 1 3/4 HEX HD | 4.000 EA |
| HW1001A25 | LOCKWASHER 1/4, ZINC PLT .493 OD, .255 I | 4.000 EA |
| 36FN3000A01SP | EXFN, PLASTIC, 7.00 OD, .912 ID | 1.000 EA |
| 51XB1214A16 | 12-14X1.00 HXWSSLD SERTYB | 1.000 EA |
| 36FH5000A11 | FAN COVER/TACH. ACC. ASSY.08 45823107 | 1.000 EA |
| 51XW1032A06 | 10-32 X .38, TAPTITE II, HEX WSHR SLTD S | 3.000 EA |
| 35CB4514 | 35 LIPPED CB LID | 1.000 EA |
| 36GS1001A08 | GASKET - CONDUIT BOX LID 36 FRAME | 1.000 EA |
| 51XW0832A07 | 8-32 X .44, TAPTITE II, HEX WSHR SLTD SE | 4.000 EA |
| 36CB4500SP | CONDUIT BOX LID, STAMPED | 2.000 EA |
| 36GS1001A08 | GASKET - CONDUIT BOX LID 36 FRAME | 2.000 EA |

| Parts List (continued) | | |
|-------------------------------|--|-----------------|
| Part Number | Description | Quantity |
| 51XW0832A07 | 8-32 X .44, TAPTITE II, HEX WSHR SLTD SE | 8.000 EA |
| HW2501D13 | KEY, 3/16 SQ X 1.375 | 1.000 EA |
| HA7000A01 | KEY RETAINER 7/8" DIA SHAFT | 1.000 EA |
| LB1115N | LABEL,LIFTING DEVICE (ON ROLLS) | 1.000 EA |
| MG1000G27 | MED CHARCOAL METALLIC GREY 400-0096 | 0.019 GA |
| 85XU0409A04 | 4X1/4 U DRIVE PIN/85xu0407a04 | 2.000 EA |
| NP0891L | NP STD LASER ENGRAVED DC MTRS, UL CSA CE | 1.000 EA |
| MG5010A01 | TRICKLE VARNISH (PEDIGREE 600 S) | 0.005 GA |
| MG5010Z01 | 488 (TPB) CATALYST | 0.001 LB |
| 36RK5009A01 | ROCKERARM ASSY, GRADE E45 | 1.000 EA |
| WD1000D04 | T&B C26M,NON-INS RING, 12-10 GA, #10 BOL | 2.000 EA |
| HA3101A27 | THRUBOLT 1/4-20 X 11.687 DEMBY | 4.000 EA |
| LC0194 | CONNECTION LABEL | 1.000 EA |
| LB1119N | WARNING LABEL | 1.000 EA |
| MN416A01 | TAG-INSTAL-MAINT no wire (1200/bx) 11/14 | 1.000 EA |
| 37PA1016 | PKG GRP, PRINT PK1035A06 | 1.000 EA |

| Accessories | | |
|--------------------|---------------------------------|-------------------|
| Part Number | Description | Multiplier |
| TK3600PM | TACHO MOUNTING KIT FOR TK3600PM | A8 |

DC Motor Performance Data

Record # 311 - Typical performance - not guaranteed values

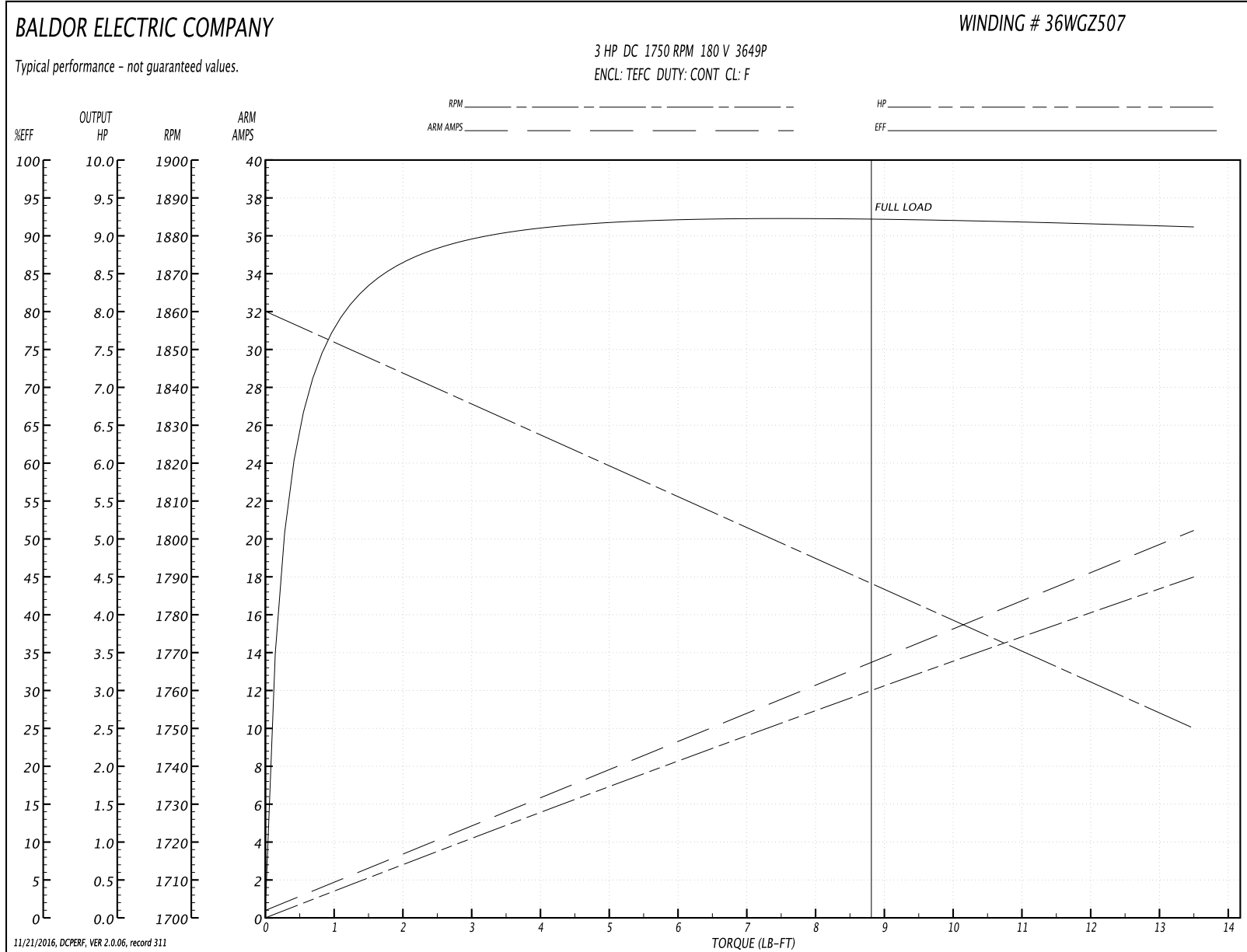
| | | |
|-------------------------------|--------------------|------------------------|
| Winding: 36WGZ507-R001 | Type: 3649P | Enclosure: TEFC |
|-------------------------------|--------------------|------------------------|

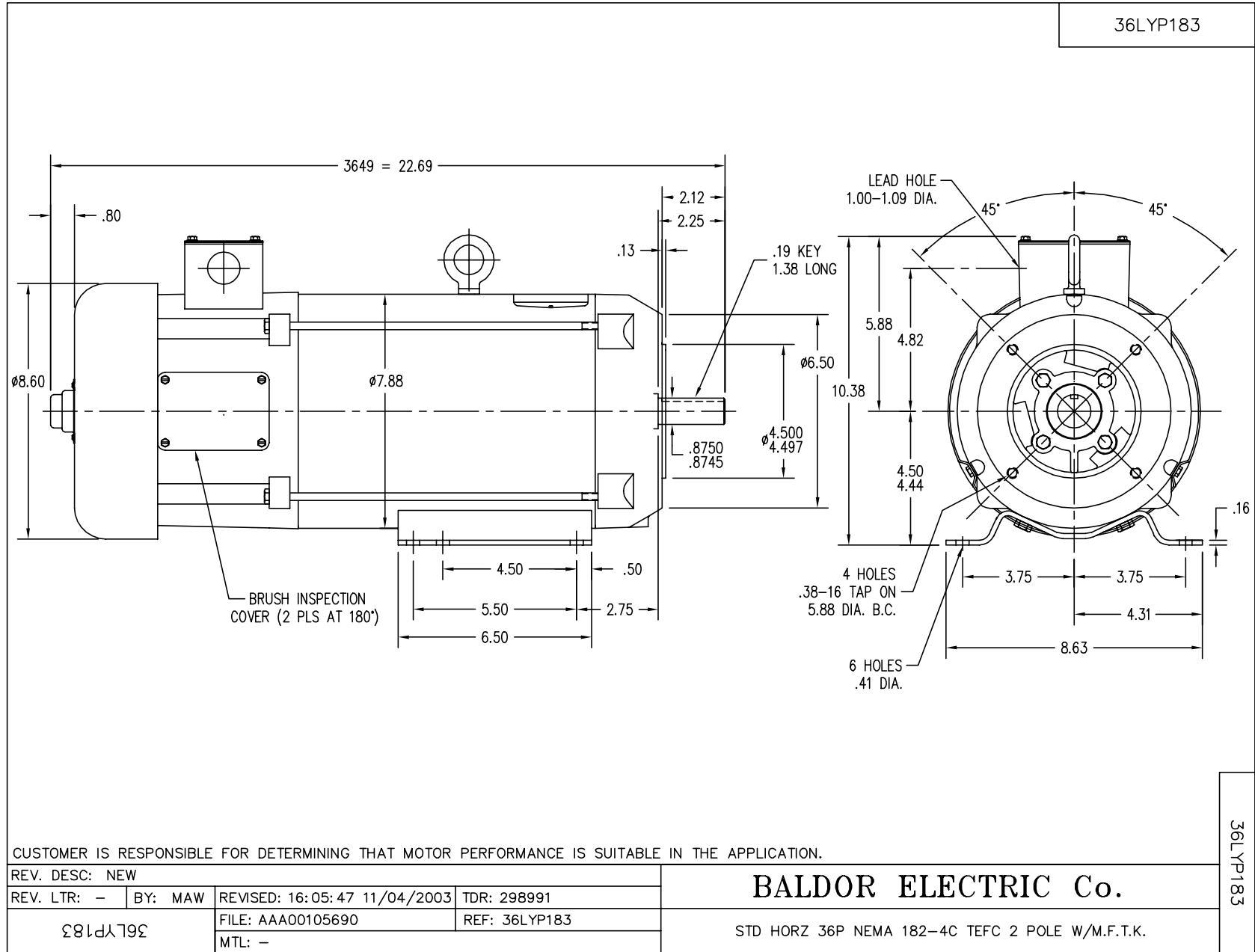
| Nameplate Data | | General Characteristics | |
|-------------------|--------------|----------------------------|----------|
| Rated Output (HP) | 3 | Armature Resistance @ 25°C | 0.3209 Ω |
| R.P.M. | 1750 | | |
| Armature Volts | 180 | | |
| Armature Amps | 14 | | |
| Field Volts | | | |
| Field Amps | | | |
| Rating - Duty | 40C AMB-CONT | | |
| Power Supply Code | K | | |
| | | | |

Load Characteristics at 180 Armature Volts

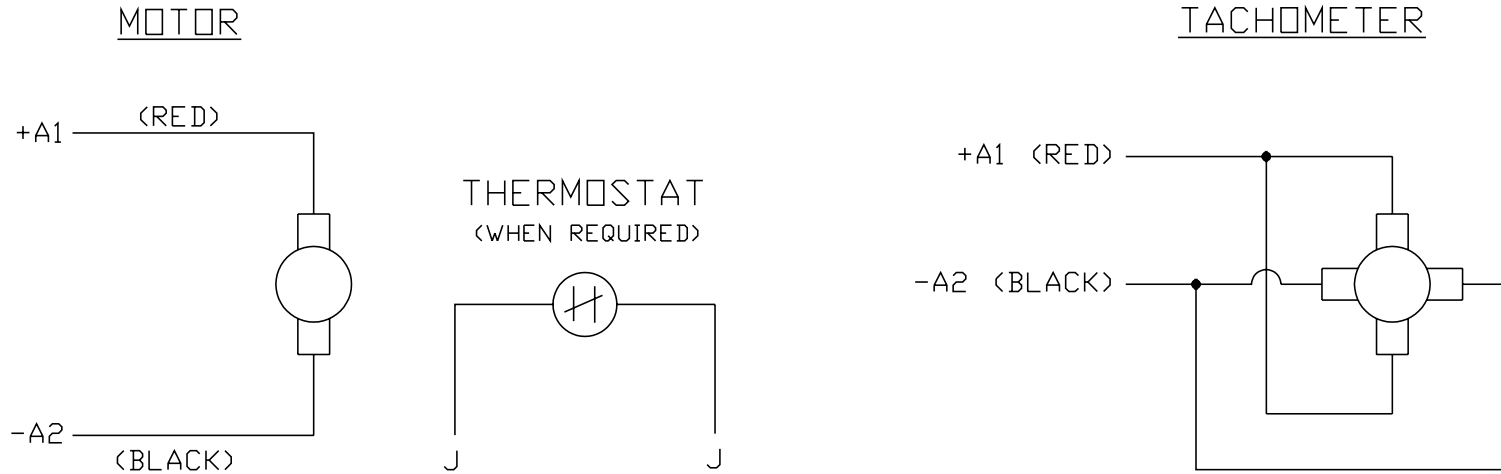
| Load Point | 1 | 2 | 3 | 4 | 5 | 6 | 7 |
|------------------|------|------|------|------|-------|-------|-------|
| Armature Amps | 0.4 | 3.37 | 6.34 | 9.01 | 12.28 | 13.51 | 20.45 |
| R.P.M. | 1860 | 1844 | 1827 | 1813 | 1795 | 1788 | 1750 |
| Torque (LB-FT) | 0 | 2 | 4 | 5.8 | 8 | 8.83 | 13.5 |

Performance Graph at 180.0 Arm V, 3.0HP Typical performance - Not guaranteed values





CD0194



NOTES:

1. CCW ROTATION AS SHOWN FACING COMMUTATOR END. TO REVERSE MOTOR ROTATION OR TACHOMETER OUTPUT POLARITY INTERCHANGE LEADS A1(RED) & A2(BLACK)
2. LEAD COLORS FOR REFERENCE ONLY & NOT SPECIFIED BY THIS DRAWING. LEAD COLORS SPECIFIED BY LAYOUT DRAWING & BILL OF MATERIAL ONLY.

| | | | |
|---------|--|--------------|-------------------|
| MATL: - | | | |
| REV: E | ADDED NOTE "LEAD COLORS FOR REFERENCE ONLY &..." | | |
| CD0194 | SCALE: - | BY: CK | REVISED: 07/28/95 |
| | FILE: AAA00004503 | TDR: 0078737 | |

BALDOR ELECTRIC Co.

CD TYPE P DC PERMANENT MAGNET MOTORS AND TACHOMETERS

CD0194