

BALDOR® • RELIANCE

Product Information Packet

EL11309

1HP,3480RPM,1PH,60HZ,56,3524LC,ODP,F1,N

Part Detail							
Revision:	E	Status:	PRD/A	Change #:		Proprietary:	No
Type:	AC	Prod. Type:	3524LC	Elec. Spec:	35WGN672	CD Diagram:	CD0055
Enclosure:	ODP	Mfg Plant:		Mech. Spec:	35M497	Layout:	35LYM497
Frame:	56	Mounting:	F1	Poles:	02	Created Date:	03-18-2014
Base:	RG	Rotation:	R	Insulation:	F	Eff. Date:	03-08-2016
Leads:	4#16 A PH,2#18 B PH					Replaced By:	
Literature:		Elec. Diagram:					

Nameplate NP3155L													
CAT.NO.	EL11309												
SPEC.	35M497N672G1												
HP	1												
VOLTS	115/230												
AMP	7.8/3.9												
RPM	3480												
FRAME	56					HZ	60			PH	1		
SER.F.	1.25					CODE	H		DES	N		CL	F
F.L. AVG. EFF.	82					PF	99						
RATING	40C AMB-CONT												
CC												USABLE AT 208V	
DE	6205					ODE	6203						
ENCL	ODP					SN							
	SFA 10/5												

Parts List		
Part Number	Description	Quantity
SA278105	SA 35M497N672G1	1.000 EA
RA264650	RA 35M497N672G1	1.000 EA
OC3060C09	CYL OIL CAP 60MFD/240V	1.000 EA
EC1645B06	ELEC CAP 165V 2.0 X 4.3	1.000 EA
WD3006A01	RSS-2-103JT 2W 10K RES. METAL OXIDE 5%	1.000 EA
NS2512A01	INSULATOR, CONDUIT BOX X	1.000 EA
35CB3007	35 CB CASTING W/.88 DIA. LEAD HOLE	1.000 EA
51XB1016A07	10-16 X 7/16 HXWSSLD SERTYB	2.000 EA
11XW1032G06	10-32 X .38, TAPTITE II, HEX WSHR SLTD U	1.000 EA
51XW0832A07	8-32 X .44, TAPTITE II, HEX WSHR SLTD SE	2.000 EA
35EP3201A03	STD FR EP OPEN-203BRG-35L OR M FRAME--LE	1.000 EA
SP1006A01	TERM. BOARD, MODE 35 SW X H-23655	1.000 EA
NS2501A02	INSULATOR, CAPACITOR BOX	1.000 EA
35CB3801	CAPACITOR COVER, CAST	1.000 EA
HA7010	CAPACITOR RETENTION CLAMP	1.000 EA
51XB1016A08	10-16X 1/2HXWSSLD SERTYB	2.000 EA
HW5100A03SP	WAVY WASHER (W1543-017)	1.000 EA
35EP3200A02	PUEP OPEN 205 BRG	1.000 EA
XY1032A02	10-32 HEX NUT DIRECTIONAL SERRATION	4.000 EA
35CB4521	35 LIPPED CB LID (GALV & PHOSPH)	1.000 EA
51XW0832A07	8-32 X .44, TAPTITE II, HEX WSHR SLTD SE	4.000 EA
HW2501D13	KEY, 3/16 SQ X 1.375	1.000 EA
HA7000A04	KEY RETAINER 0.625 DIA SHAFTS	1.000 EA
85XU0407S04	4X1/4 U DRIVE PIN STAINLESS	2.000 EA

Parts List (continued)		
Part Number	Description	Quantity
MJ1000A02	GREASE, POLYREX EM EXXON (USe 4824-15A)	0.050 LB
HA3100A18	THRUBOLT 10-32 X 9.250	4.000 EA
SP5181A01	MODEL 35 LC TORQ STAT SWITCH LEAD ASSY	1.000 EA
MG1000Y03	MUNSELL 2.53Y 6.70/ 4.60, GLOSS 20,	0.017 GA
WD1000A15	3-520132-2 AMP FLAG (4M/RL NON-CANC/NON-	4.000 EA
MN416A01	TAG-INSTAL-MAINT no wire (1000/bx) 11/14	1.000 EA
LC0001A01	CONN LABEL / WARNING LABEL (LC0001 / LB1	1.000 EA
NP3155L	ALUM SUPER-E UL CSA CC "SEMS"	1.000 EA
36PA1000	PKG GRP, PRINT PK1016A06	1.000 EA

AC Induction Motor Performance Data
Record # 44952 - Typical performance - not guaranteed values

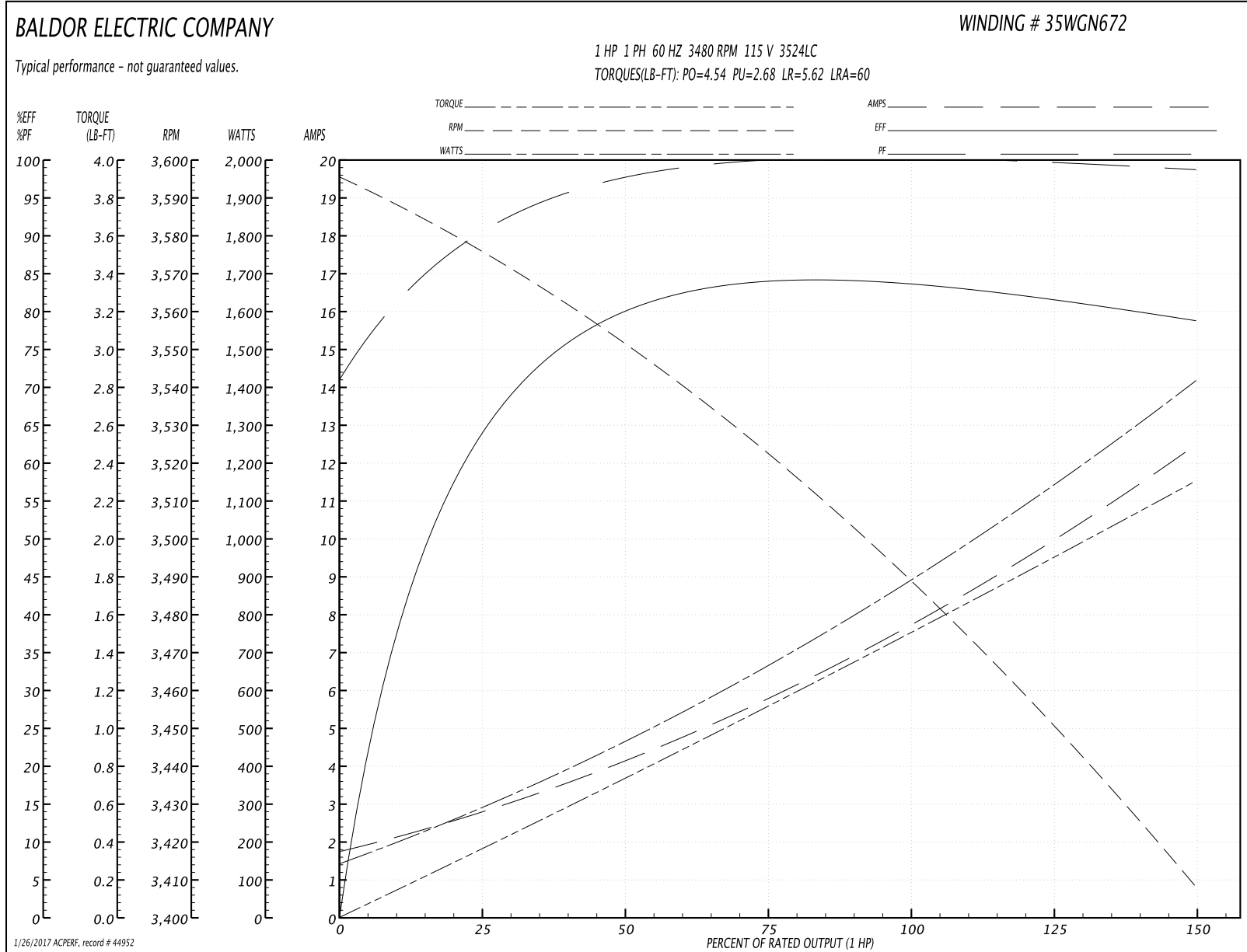
Winding: 35WGN672-R002	Type: 3524LC	Enclosure: OPEN
-------------------------------	---------------------	------------------------

Nameplate Data				115 V, 60 Hz: Low Voltage Connection	
Rated Output (HP)	1			Full Load Torque	1.51 LB-FT
Volts	115/230			Start Configuration	direct on line
Full Load Amps	7.8/3.9			Breakdown Torque	4.54 LB-FT
R.P.M.	3480			Pull-up Torque	2.68 LB-FT
Hz	60	Phase	1	Locked-rotor Torque	5.62 LB-FT
NEMA Design Code	N	KVA Code	H	Starting Current	60 A
Service Factor (S.F.)	1.25			No-load Current	1.8 A
NEMA Nom. Eff.	82	Power Factor	99	Line-line Res. @ 25°C	0.63772 Ω A Ph 0.97353 Ω B Ph
Rating - Duty	40C AMB-CONT			Temp. Rise @ Rated Load	11°C
S.F. Amps	10/5			Temp. Rise @ S.F. Load	15°C

Load Characteristics 115 V, 60 Hz, 1 HP

% of Rated Load	25	50	75	100	125	150	S.F.
Power Factor	90	98	99	100	99	99	99
Efficiency	67.6	79.9	83.3	83.3	81.7	78.8	81.7
Speed	3573.1	3548.4	3521.9	3491.7	3452	3405.5	3452
Line amperes	2.72	4.17	5.87	7.77	9.99	12.5	9.99

Performance Graph at 115V, 60Hz, 1.0HP Typical performance - Not guaranteed values



AC Induction Motor Performance Data
Record # 49833 - Typical performance - not guaranteed values

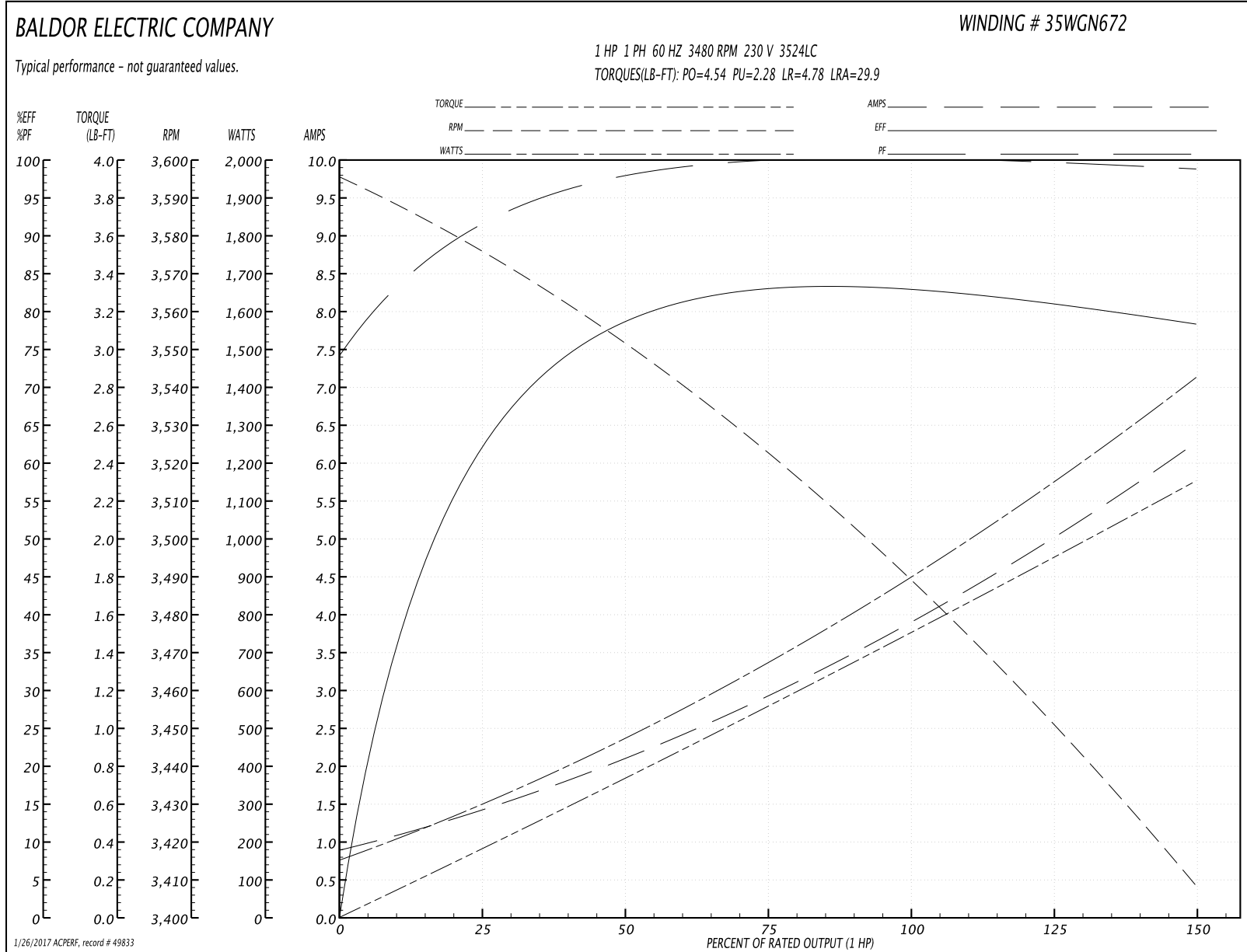
Winding: 35WGN672-R002	Type: 3524LC	Enclosure: OPEN
-------------------------------	---------------------	------------------------

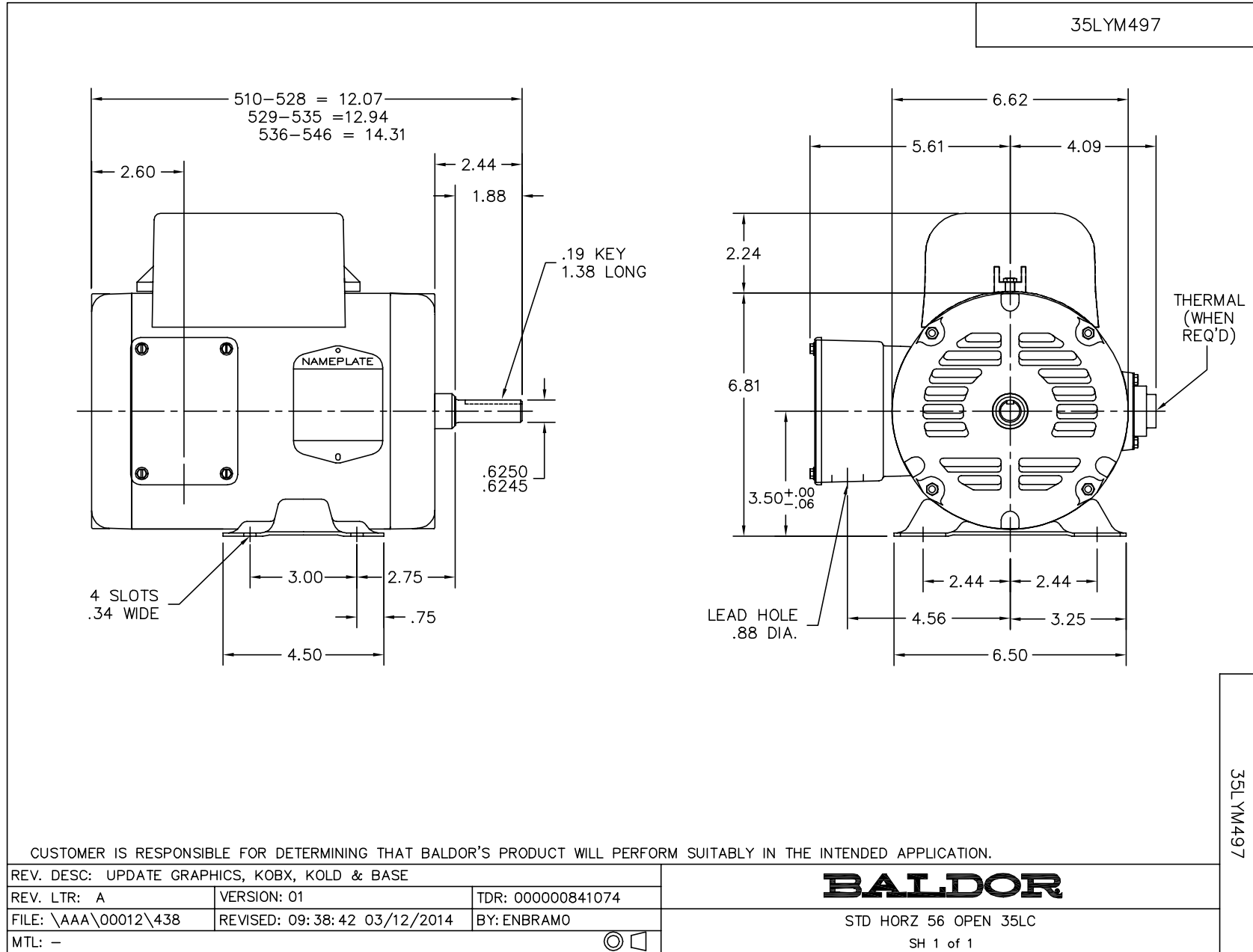
Nameplate Data				230 V, 60 Hz: High Voltage Connection	
Rated Output (HP)	1			Full Load Torque	1.51 LB-FT
Volts	115/230			Start Configuration	direct on line
Full Load Amps	7.8/3.9			Breakdown Torque	4.54 LB-FT
R.P.M.	3480			Pull-up Torque	2.28 LB-FT
Hz	60	Phase	1	Locked-rotor Torque	4.78 LB-FT
NEMA Design Code	N	KVA Code	H	Starting Current	29.9 A
Service Factor (S.F.)	1.25			No-load Current	0.917 A
NEMA Nom. Eff.	82	Power Factor	99	Line-line Res. @ 25°C	0.599 Ω A Ph 0.913 Ω B Ph
Rating - Duty	40C AMB-CONT			Temp. Rise @ Rated Load	12°C
S.F. Amps	10/5			Temp. Rise @ S.F. Load	16°C
				Locked-rotor Power Factor	97.3
				Rotor inertia	0.0516 LB-FT ²

Load Characteristics 230 V, 60 Hz, 1 HP

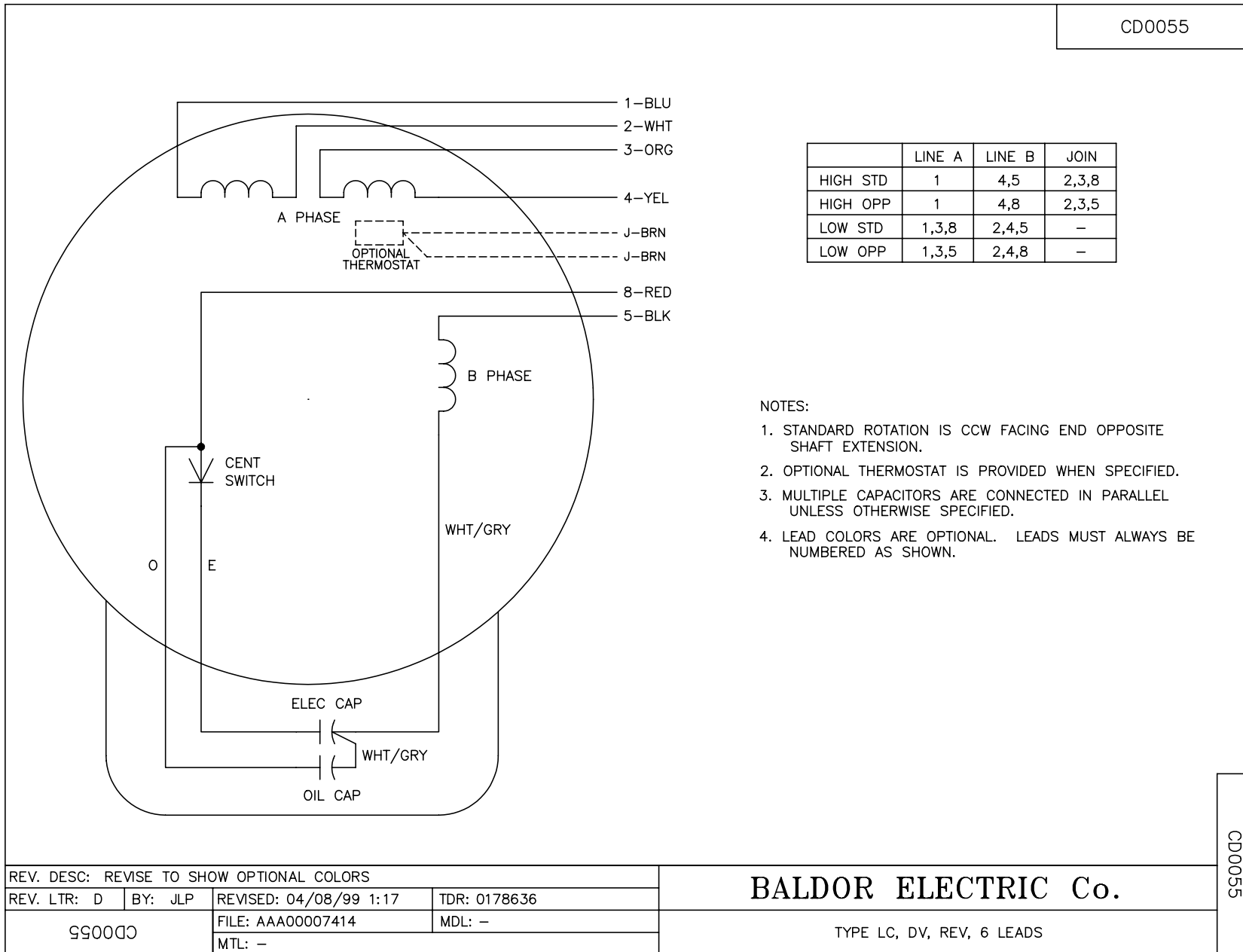
% of Rated Load	25	50	75	100	125	150	S.F.
Power Factor	91	98	100	100	99	99	99
Efficiency	65.8	78.6	82.1	82.8	81.4	78.3	81.4
Speed	3573	3549	3522	3492	3452	3406	3452
Line amperes	1.39	2.11	2.97	3.92	5.03	6.28	5.03

Performance Graph at 230V, 60Hz, 1.0HP Typical performance - Not guaranteed values





CD0055



REV. DESC: REVISE TO SHOW OPTIONAL COLORS			
REV. LTR: D	BY: JLP	REVISED: 04/08/99 1:17	TDR: 0178636
99000		FILE: AAA00007414	MDL: -
CD0055		MTL: -	

BALDOR ELECTRIC Co.

TYPE LC, DV, REV, 6 LEADS

CD0055