

# **BALDOR**® • *RELIANCE*

## Product Information Packet

# **EMVM3558D**

**1.5KW,1755RPM,3PH,60HZ,D90LD,3528M,TEFC**

| Part Detail |       |                |       |             |          |               |            |
|-------------|-------|----------------|-------|-------------|----------|---------------|------------|
| Revision:   | B     | Status:        | PRD/A | Change #:   |          | Proprietary:  | No         |
| Type:       | AC    | Prod. Type:    | 3528M | Elec. Spec: | 35WGN909 | CD Diagram:   | CD0005     |
| Enclosure:  | TEFC  | Mfg Plant:     |       | Mech. Spec: | 35Q175   | Layout:       | 35LYQ175   |
| Frame:      | D90LD | Mounting:      | B5    | Poles:      | 04       | Created Date: | 05-08-2015 |
| Base:       | N     | Rotation:      | R     | Insulation: | F        | Eff. Date:    | 11-16-2016 |
| Leads:      | 9#18  |                |       |             |          | Replaced By:  |            |
| Literature: |       | Elec. Diagram: |       |             |          |               |            |

| Nameplate NP3389L |                                 |
|-------------------|---------------------------------|
| CAT.NO.           | EMVM3558D                       |
| SPEC.             | 35Q175N909G1                    |
| IEC FRAME         | D90LD <b>KW</b> 1.5KW           |
| VOLTS             | 230/460                         |
| AMP               | 5.8/2.9                         |
| RPM               | 1755 <b>ENCL</b> TEFC           |
| HZ                | 60 <b>PH</b> 3 <b>CL</b> F      |
| SER.F.            | 1.15 <b>DES</b> B <b>CODE</b> L |
| NEMA-NOM-EFF      | 86.5 <b>I.P.</b> 54             |
| RATING            | 40C AMB-CONT                    |
| CC                | 010A <b>USABLE AT 208V</b> 5.8  |
| DE                | 6205 <b>ODE</b> 6203            |
| SER. #            |                                 |

| Parts List    |  |          |
|---------------|--|----------|
| Part Number   | Description                              | Quantity |
| SA301013      | SA 35Q175N909G1                          | 1.000 EA |
| RA288082      | RA 35Q175N909G1                          | 1.000 EA |
| 34FN3002B01   | EXTERNAL FAN, PLASTIC, .637/.639 HUB W/  | 1.000 EA |
| NS2512A01     | INSULATOR, CONDUIT BOX X                 | 1.000 EA |
| 35CB3007      | 35 CB CASTING W/.88 DIA. LEAD HOLE       | 1.000 EA |
| 36GS1000SP    | GASKET-CONDUIT BOX, .06 THICK #SV-330 LE | 1.000 EA |
| 51XB1016A07   | 10-16 X 7/16 HXWSSLD SERTYB              | 2.000 EA |
| 11XW1032G06   | 10-32 X .38, TAPTITE II, HEX WSHR SLTD U | 1.000 EA |
| 35FE3100M01   | FREP TEFC ASSEMBLY FOR ROUTING           | 1.000 EA |
| HW4500A01     | 1641B(ALEMITE)400 UNIV, GREASE FITT      | 1.000 EA |
| HW5100A03SP   | WAVY WASHER (W1543-017)                  | 1.000 EA |
| 35EP1518A01   | MODEL 35 IEC FF165 MACH. 80 & D90 205 BR | 1.000 EA |
| HW4500A01     | 1641B(ALEMITE)400 UNIV, GREASE FITT      | 1.000 EA |
| HW4600A30     | GARLOCK 63X273 SINGLE LIP SEAL           | 1.000 EA |
| 51XN1032A20   | 10-32 X 1 1/4 HX WS SL SR                | 2.000 EA |
| 35FH4005A84SP | IEC FH W/GRSR, NO DIMPLES PRIMED         | 1.000 EA |
| 51XW1032A06   | 10-32 X .38, TAPTITE II, HEX WSHR SLTD S | 3.000 EA |
| 35CB4521GX    | CONDUIT BOX LID KIT                      | 1.000 EA |
| 51XW0832A07   | 8-32 X .44, TAPTITE II, HEX WSHR SLTD SE | 4.000 EA |
| HW2505A11     | KEY, 8 X 7 MM 1.125" X                   | 1.000 EA |
| MJ5001A27     | 32220KN GRAY SEALER *MIN BUY 4 QTS=1GAL  | 0.001 QT |
| 85XU0407S04   | 4X1/4 U DRIVE PIN STAINLESS              | 2.000 EA |
| MJ1000A02     | GREASE, POLYREX EM EXXON (USe 4824-15A)  | 0.050 LB |
| MG1000Y03     | MUNSELL 2.53Y 6.70/ 4.60, GLOSS 20,      | 0.017 GA |

| <b>Parts List (continued)</b> |  |                 |
|-------------------------------|--|-----------------|
| <b>Part Number</b>            | <b>Description</b>                       | <b>Quantity</b> |
| HA3100A37                     | THRUBOLT 10-32 X 8.500                   | 4.000 EA        |
| LB1119N                       | WARNING LABEL                            | 1.000 EA        |
| LC0005                        | CONN.DIA.,TY M,9-LD,DUAL VOLT,REVERSING  | 1.000 EA        |
| MN416A01                      | TAG-INSTAL-MAINT no wire (1000/bx) 11/14 | 1.000 EA        |
| NP3389L                       | SS IEC SUPER E UL CSA-EEV NEMA PREMIUM   | 1.000 EA        |
| 36PA1000                      | PKG GRP, PRINT PK1016A06                 | 1.000 EA        |
| PK3082                        | STYROFOAM CRADLE                         | 1.000 EA        |

**AC Induction Motor Performance Data**

Record # 48837 - Typical performance - not guaranteed values

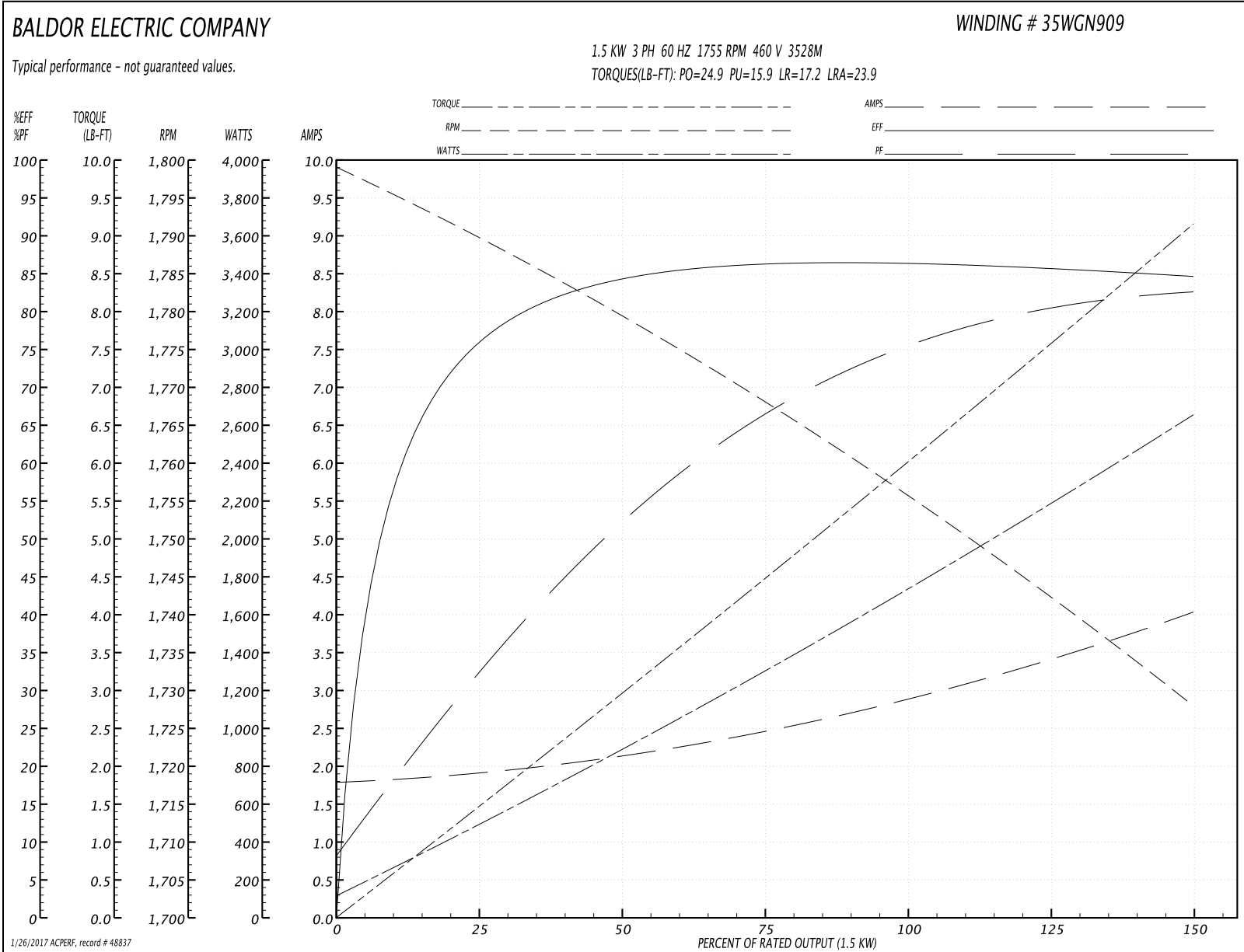
|                               |                    |                        |
|-------------------------------|--------------------|------------------------|
| <b>Winding:</b> 35WGN909-R020 | <b>Type:</b> 3528M | <b>Enclosure:</b> TEFC |
|-------------------------------|--------------------|------------------------|

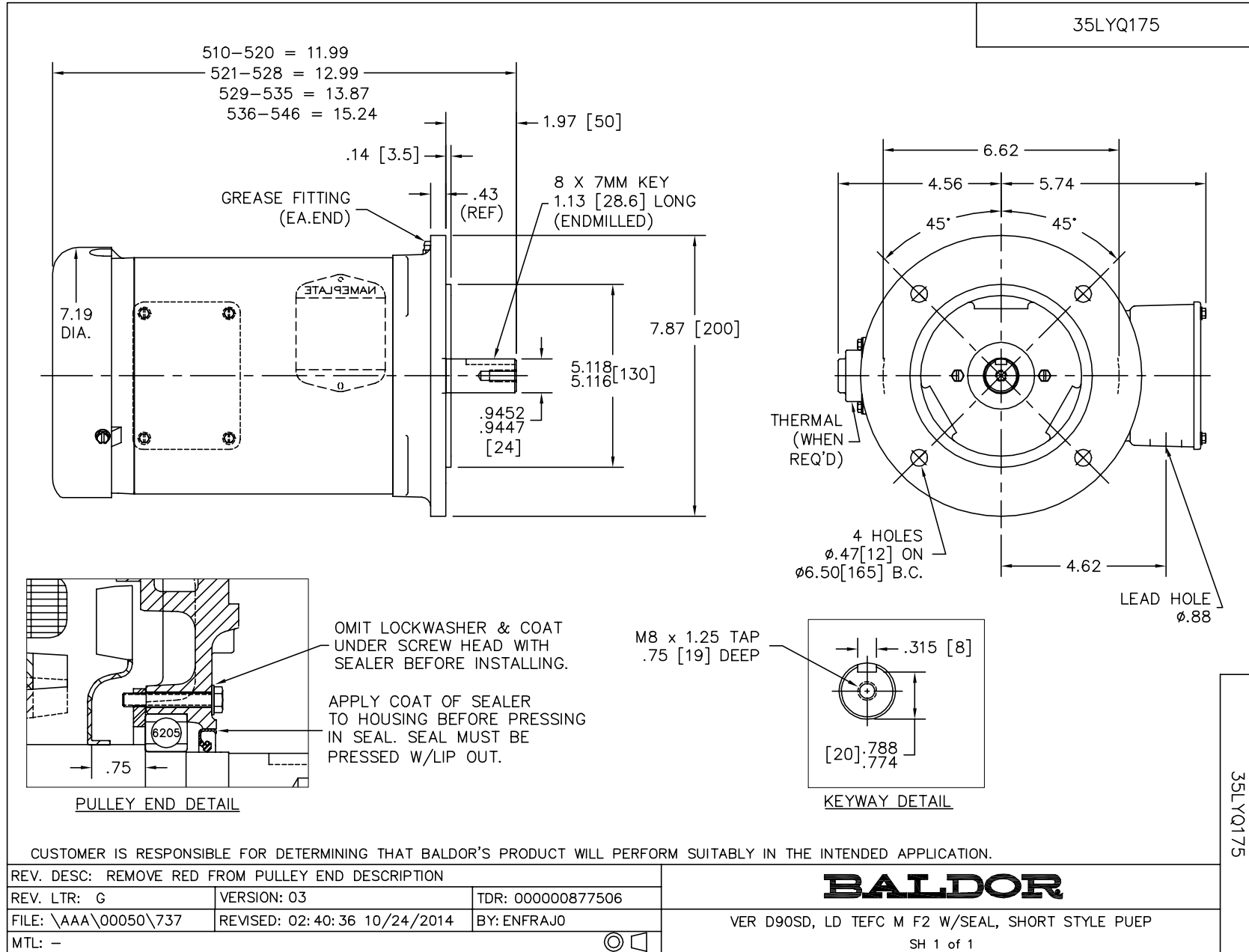
| Nameplate Data        |              |              |    | 460 V, 60 Hz:<br>High Voltage Connection |                          |
|-----------------------|--------------|--------------|----|--|--------------------------|
| Rated Output (KW)     | 1.5          |              |    | Full Load Torque                         | 6.02 LB-FT               |
| Volts                 | 230/460      |              |    | Start Configuration                      | direct on line           |
| Full Load Amps        | 5.8/2.9      |              |    | Breakdown Torque                         | 24.9 LB-FT               |
| R.P.M.                | 1755         |              |    | Pull-up Torque                           | 15.9 LB-FT               |
| Hz                    | 60           | Phase        | 3  | Locked-rotor Torque                      | 17.2 LB-FT               |
| NEMA Design Code      | B            | KVA Code     | L  | Starting Current                         | 23.9 A                   |
| Service Factor (S.F.) | 1.15         |              |    | No-load Current                          | 1.81 A                   |
| NEMA Nom. Eff.        | 86.5         | Power Factor | 75 | Line-line Res. @ 25°C                    | 8.02 Ω                   |
| Rating - Duty         | 40C AMB-CONT |              |    | Temp. Rise @ Rated Load                  | 65°C                     |
| S.F. Amps             |              |              |    | Temp. Rise @ S.F. Load                   | 78°C                     |
|                       |              |              |    | Locked-rotor Power Factor                | 52.4                     |
|                       |              |              |    | Rotor inertia                            | 0.165 LB-FT <sup>2</sup> |

Load Characteristics 460 V, 60 Hz, 1.5 KW

| % of Rated Load | 25   | 50   | 75   | 100  | 125  | 150  | S.F. |
|-----------------|------|------|------|------|------|------|------|
| Power Factor    | 33   | 53   | 66   | 75   | 80   | 83   | 78   |
| Efficiency      | 75.6 | 84.3 | 86.4 | 86.5 | 85.9 | 84.6 | 86.1 |
| Speed           | 1790 | 1779 | 1768 | 1756 | 1742 | 1728 | 1748 |
| Line amperes    | 1.89 | 2.11 | 2.47 | 2.92 | 3.42 | 4.02 | 3.22 |

Performance Graph at 460V, 60Hz, 1.5KW Typical performance - Not guaranteed values

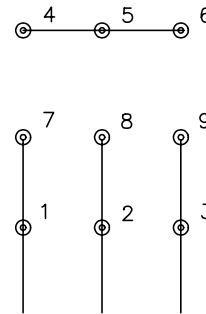




CD0005

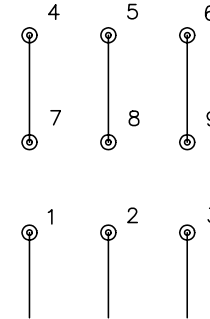


LOW VOLTAGE  
(2Y)



LINE

HIGH VOLTAGE  
(1Y)



LINE

NOTES:

1. INTERCHANGE ANY TWO LINE LEADS TO REVERSE ROTATION.
2. OPTIONAL THERMOSTATS ARE PROVIDED WHEN SPECIFIED.
3. ACTUAL NUMBER OF INTERNAL PARALLEL CIRCUITS MAY BE A MULTIPLE OF THOSE SHOWN ABOVE.
4. LEAD COLORS ARE OPTIONAL. LEADS MUST ALWAYS BE NUMBERED AS SHOWN.

|   |         |                         |              |
|---|---------|-------------------------|--------------|
| REV. DESC: REVISE TO SHOW OPTIONAL COLORS |         |                         |              |
| REV. LTR: E                               | BY: JLP | REVISED: 01/19/99 10:15 | TDR: 0171435 |
| 90000                                     |         | FILE: AAA00005140       | MDL: -       |
|   |         | MTL: -                  |              |

**BALDOR ELECTRIC Co.**

3PH, DV, 9 LEADS

CD0005