

BALDOR® • *RELIANCE*

Product Information Packet

IDXM7144T

5HP,1750RPM,3PH,60HZ,184TC,X0640M,XPFC

Part Detail							
Revision:	AH	Status:	PRD/A	Change #:		Proprietary:	No
Type:	AC	Prod. Type:	0640M	Elec. Spec:	06WGW352	CD Diagram:	CD0005
Enclosure:	XPFC	Mfg Plant:		Mech. Spec:	06J010	Layout:	06LYJ010
Frame:	184TC	Mounting:	F1	Poles:	04	Created Date:	
Base:	RG	Rotation:	R	Insulation:	F	Eff. Date:	12-23-2015
Leads:	9#16					Replaced By:	
Literature:		Elec. Diagram:					

Nameplate NP0890XPSLEV									
NO.					CC	010A			
S/N					TEMP CODE	T2B			
SPEC.	06J010W352G1				INV. TYPE	PWM			
CAT.NO.	IDX7144T				C HP FR	60		C HP TO	90
HP	5				CT HZ FROM	30		CT HZ TO	60
VOLTS	230/460				VT HZ FROM	6		VT HZ TO	60
AMPS	13/6.5				MAG CUR	6.8/3.4			
RPM	1750				MX RPM	2700			
HZ	60	PH	3	CL	F	NOM.EFF.	89.5		
SER.F.	1.00		DES	B	SL HZ	1.7		WK2	.4
FRAME	184TC		RATING	40C AMB-CONT					

Parts List		
Part Number	Description	Quantity
SA020521	SA 06J010W352G1	1.000 EA
RA016574	RA 06J010W352G1	1.000 EA
HW3201A05	3/8-16 EYEBOLT	1.000 EA
07CB1000A02	CONDUIT BOX, MODEL 306,EXP. PROOF	1.000 EA
10XN2520A12	O1/4-20X 3/4 HEX HEAD CAP	4.000 EA
HW1001A25	LOCKWASHER 1/4, ZINC PLT .493 OD, .255 I	4.000 EA
WD1000B17	T&B CX35TN TERMINAL	1.000 EA
11XW1032G06	10-32 X .38, TAPTITE II, HEX WSHR SLTD U	1.000 EA
HW4500A19	1/4-28X1/4 SLOTTED PLUG F/S	2.000 EA
06EP1706A01	SPECIAL FRONT ENDPLATE X06M - TEFC	1.000 EA
10XN3118K20	5/16-18 X 1 1/4 GRADE 5 STEEL ZC PLATED	4.000 EA
HW1001A31	LOCKWASHER 5/16, ZINC PLT.591 OD, .319 I	4.000 EA
HW5100A05	WVY WSHR F/205 & 304 BRGS	1.000 EA
06EP1707A01	STD XP PU EP 182-4TC 206 BRG 306M	1.000 EA
51XN1032A20	10-32 X 1 1/4 HX WS SL SR	2.000 EA
HW4001A01	1/4 HX SOC PIPE PLG (F/S) ALLOY STEEL W/	2.000 EA
60XN1032A07	10-32 X 1/2 TRUSS HEAD, TORX SERRATED ZN	2.000 EA
10XN3118K20	5/16-18 X 1 1/4 GRADE 5 STEEL ZC PLATED	4.000 EA
HW1001A31	LOCKWASHER 5/16, ZINC PLT.591 OD, .319 I	4.000 EA
06FH1003A01	FAN COVER, CAST X-PROOF--MACHINING	1.000 EA
51XN1032A14	10-32 X 0.875 HX WS SL SR	4.000 EA
07CB1500A01	CONDUIT BOX LID MACH	1.000 EA
10XN2520A16	1/4-20 X 1 HEX HEAD CAP SCR, ZINC PLATED	4.000 EA
HW1001A25	LOCKWASHER 1/4, ZINC PLT .493 OD, .255 I	4.000 EA

Parts List (continued)		
Part Number	Description	Quantity
HW2501E16	3KEY, 1/4 SQ X 1.750	1.000 EA
HA7000A02	KEY RETAINER RING, 1 1/8 DIA, 1 3/8 DIA	1.000 EA
LB1081F	ALUM XP CAUTION LABEL (FS PLANT ONLY-	1.000 EA
LB1115N	LABEL,LIFTING DEVICE (ON ROLLS)	1.000 EA
85XU0407S04	4X1/4 U DRIVE PIN STAINLESS	6.000 EA
MJ1000A02	GREASE, POLYREX EM EXXON (USe 4824-15A)	0.050 LB
36FN3000A01SP	EXFN, PLASTIC, 7.00 OD, .912 ID	1.000 EA
51XB1214A16	12-14X1.00 HXWSSLD SERTYB	1.000 EA
MG1025G29	WILKOFASST, 789.229, DARK CHARCOAL GRAY	0.028 GA
LB1119N	WARNING LABEL	1.000 EA
LC0145B01	CONNECTION LABEL	1.000 EA
NP0890XPSLEV	SS XP INV UL CSA-EEV CC CL-I GP-D	1.000 EA
37PA1039	PALLET PACK GRP, PRINT PK1026A06	1.000 EA
MN416A01	TAG-INSTAL-MAINT no wire (1200/bx) 11/14	1.000 EA

AC Induction Motor Performance Data

Page 1 of 1



AC Induction Motor Performance Data

Record # 36475

Typical performance - not guaranteed values

Winding: 06WGW352	Type: 0640M	Enclosure: XPFC
--------------------------	--------------------	------------------------

Nameplate Data			General Characteristics at 460 V, 60 Hz: High Volt Connection		
Rated Output (HP)	5		Full Load Torque	15 LB-FT	
Volts	230/460		Start Configuration	DOL	
Full Load Amps	13/6.5		Break Down Torque	50 LB-FT	
R.P.M.	1750		Pull-Up Torque	30 LB-FT	
Hz	60	Phase	Locked-rotor Torque	32 LB-FT	
NEMA Design Code	B	KVA Code	Starting Current	48 Amps	
Service Factor	1		No-load Current	3.4 Amps	
NEMA Nom. Eff.	89.5	P.F.	Line-line Res. @ 25°C.	2.45 Ohms	
Rating - Duty	40C AMB-CONT		Temp. Rise @ Rated Load	47°C	
S.F. Amps			Temp. Rise @ S.F. Load		

Load Characteristics at 460 Volts, 60 Hz, 5 HP

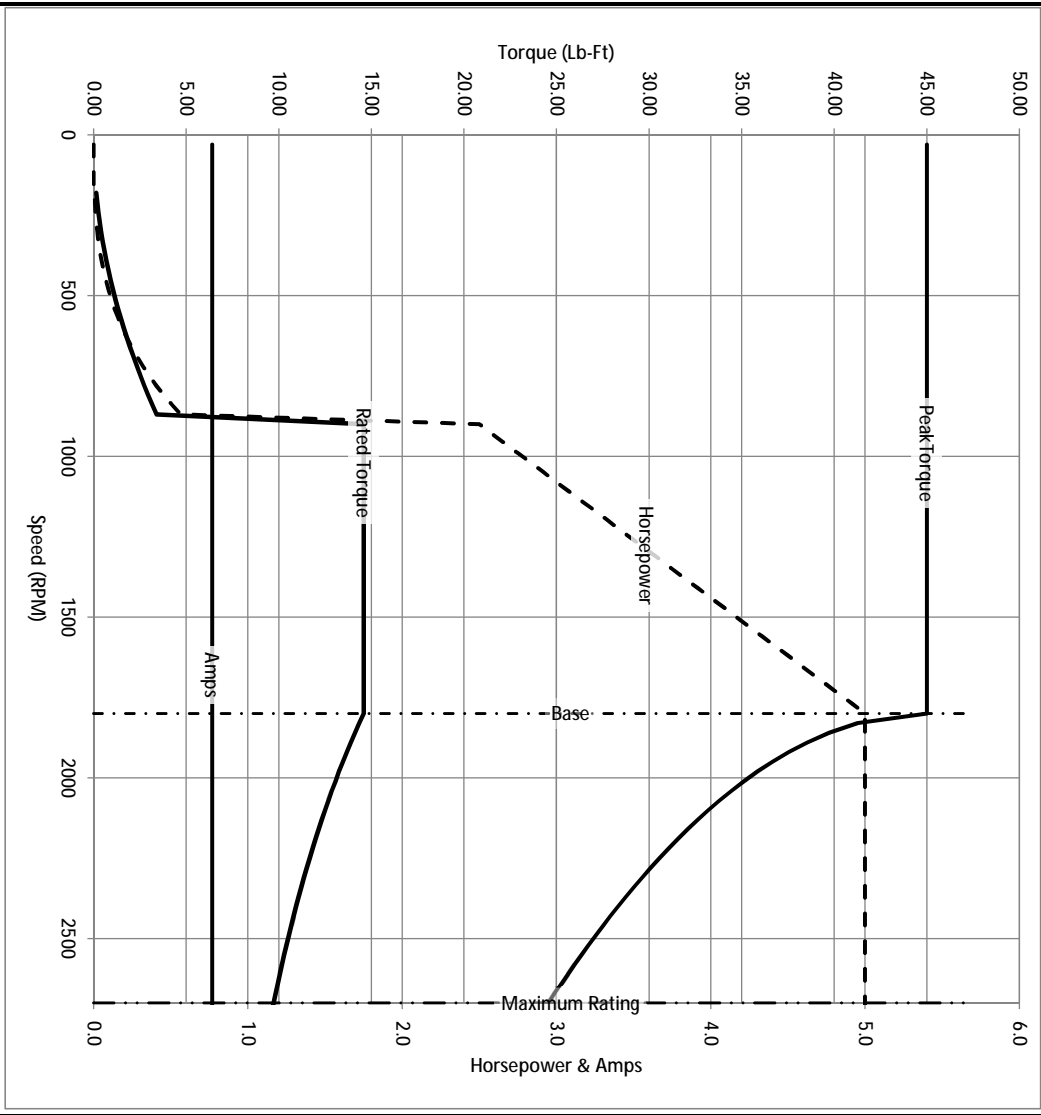
% of Rated Load	25	50	75	100	125	150	S.F.
Power Factor	40	62	75	81	90	87	
Efficiency	84.1	89.4	90.8	90.2	89.7	88.3	
Speed	1789	1778	1767	1755	1742	1729	
Line Amperes	3.6	4.3	5.2	6.4	7.2	9	

Baldor Electric Company Fort Smith, Arkansas

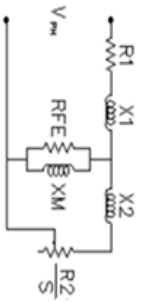


2/27/2013

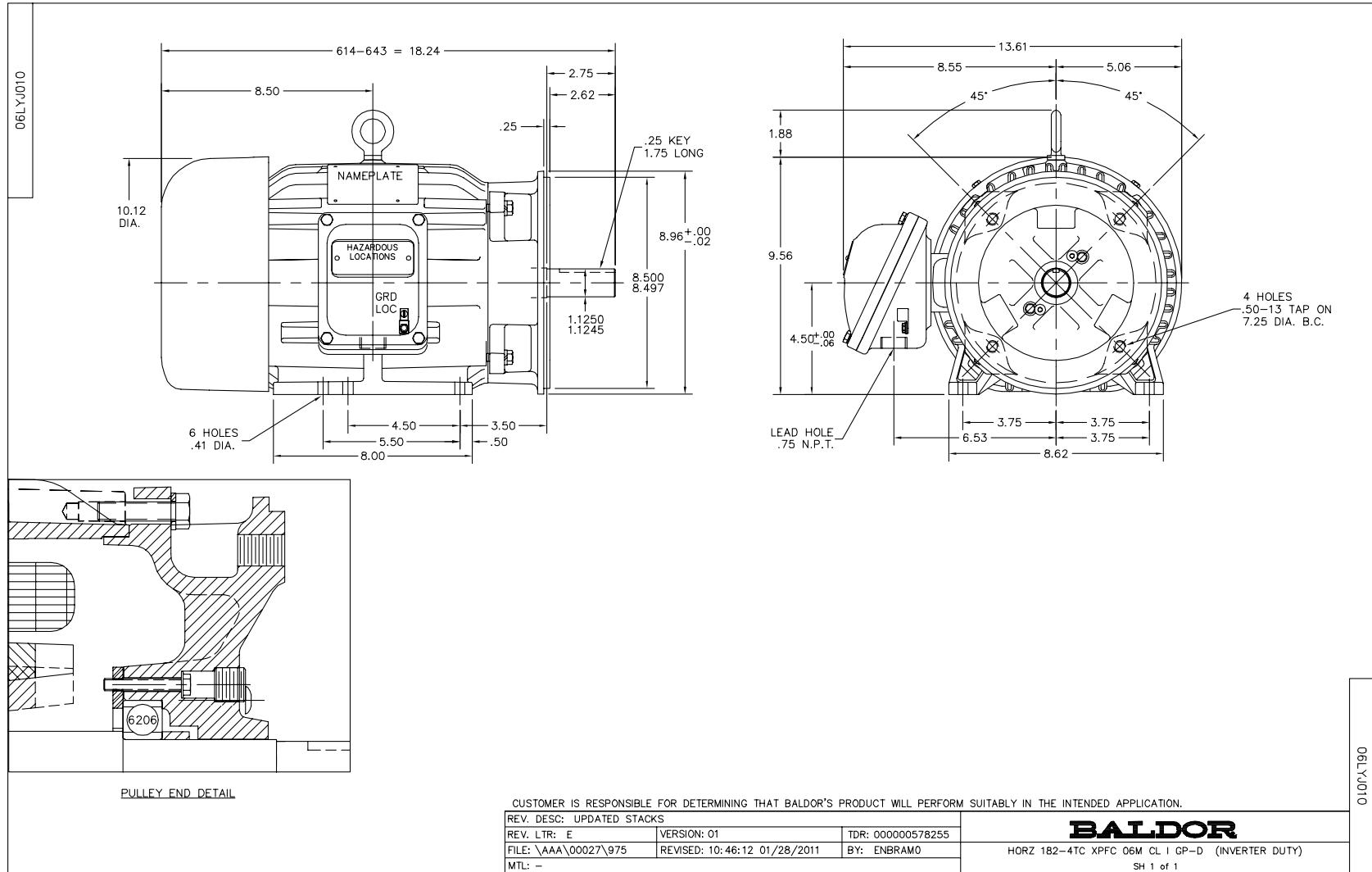
Catalog	IDXM7144T	NIP VOLTS	230/460	ENCLOSURE	XPFC	WYE CONN EQ CKT OHMS PER PHASE (BASE RATING, 200°)			
FRAME	184TC	NIP AMPS	13/6.5	Base Volts	460	R1	1.200	X1	2.786
HP	5 HP	DUTY	Cont	Base AMPS	6.4	R2	0.977	X2	2.177
BASE SPEED	1800	MAX SAFE RPM	2700	Slip Hz	1.50			XMI	78.683
PHASE/HZ	3/60	AMB ⁶ C/INSUL	40/F	WK ² (lb-ft ²)	0.372				



Remarks: Calculated Data



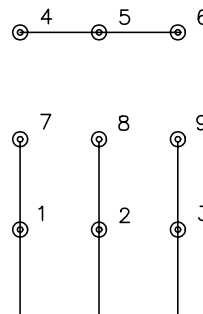
<p>A MEMBER OF THE ABB GROUP</p>	DR BY	ENR	<p>A-C MOTOR</p> <p>PERFORMANCE CURVES</p> <p>06J010W352G1</p>
	CK BY	ENR	
	APP BY	ENR	ISSUE DATE
	DATE	2/27/2013	2/27/2013



CD0005

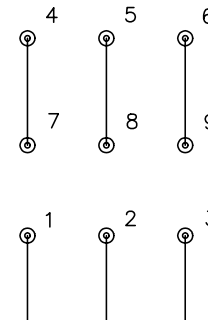


LOW VOLTAGE
(2Y)



LINE

HIGH VOLTAGE
(1Y)



LINE

NOTES:

1. INTERCHANGE ANY TWO LINE LEADS TO REVERSE ROTATION.
2. OPTIONAL THERMOSTATS ARE PROVIDED WHEN SPECIFIED.
3. ACTUAL NUMBER OF INTERNAL PARALLEL CIRCUITS MAY BE A MULTIPLE OF THOSE SHOWN ABOVE.
4. LEAD COLORS ARE OPTIONAL. LEADS MUST ALWAYS BE NUMBERED AS SHOWN.

REV. DESC: REVISE TO SHOW OPTIONAL COLORS			
REV. LTR: E	BY: JLP	REVISED: 01/19/99 10:15	TDR: 0171435
90000		FILE: AAA00005140	MDL: -
		MTL: -	

BALDOR ELECTRIC Co.

3PH, DV, 9 LEADS

CD0005