

# **BALDOR® • RELIANCE**

## **Product Information Packet**

### **L1307M**

**.75HP, 1725RPM, 1PH, 60HZ, 56, 3428L, OPEN, F1**

Part Detail							
Revision:	AD	Status:	PRD/A	Change #:		Proprietary:	No
Type:	AC	Prod. Type:	3428L	Elec. Spec:	34WGW197	CD Diagram:	CD0269
Enclosure:	OPEN	Mfg Plant:		Mech. Spec:	34F074	Layout:	34LYF074
Frame:	56	Mounting:	F1	Poles:	04	Created Date:	
Base:	RG	Rotation:	R	Insulation:	B	Eff. Date:	08-25-2015
Leads:	6#18,1#14 #4TH					Replaced By:	
Literature:		Elec. Diagram:					

Nameplate NP1257L	
CAT.NO.	L1307M
SPEC.	34F74W197
HP	.75
VOLTS	115/230
AMP	10.2/5.1
RPM	1725
FRAME	56
SER.F.	1.25//
NEMA-NOM-EFF	68
RATING	40C AMB-CONT
CC	
DE	6203
ENCL	OPEN
	SFA 11.4/5.7

CODE	K	DES	N	CL	B	PH	1	HZ	60	PF	68	USABLE AT 208V	6	ODE	6203	SN	
------	---	-----	---	----	---	----	---	----	----	----	----	----------------	---	-----	------	----	--

Parts List		
Part Number	Description	Quantity
SA005875	SA 34F74W197	1.000 EA
RA002621	RA 34F74W197	1.000 EA
EC1460A05SP	ELEC CAP, 460-552 MFD, 125V, 2.06D X 3.	1.000 EA
NS2512A01	INSULATOR, CONDUIT BOX X	1.000 EA
34CB3002A	CB CAST W/.88 DIA HOLE	1.000 EA
51XB1016A07	10-16 X 7/16 HXWSSLD SERTYB	2.000 EA
11XW1032G06	10-32 X .38, TAPTITE II, HEX WSHR SLTD U	1.000 EA
34EP3210A01SP	FR ENDPLATE, MACH	1.000 EA
51XW0832A07	8-32 X .44, TAPTITE II, HEX WSHR SLTD SE	2.000 EA
SP1006A01	TERM. BOARD, MODE 35 SW X H-23655	1.000 EA
NS2501A01	INSULATOR, CAPACITOR	1.000 EA
51XB1016A05	10-16X5/16HX WA SL SR TYB (F/S)	2.000 EA
HW5100A03SP	WAVY WASHER (W1543-017)	1.000 EA
34EP3212A02	PU ENDPLATE, MODEL 34 OPEN	1.000 EA
XY1032A02	10-32 HEX NUT DIRECTIONAL SERRATION	4.000 EA
34CB4517	CB LID 4 MTG HOLES .22 DIA STAMPED, FOR	1.000 EA
51XW0832A07	8-32 X .44, TAPTITE II, HEX WSHR SLTD SE	4.000 EA
HW2501D13	KEY, 3/16 SQ X 1.375	1.000 EA
HA7000A04	KEY RETAINER 0.625 DIA SHAFTS	1.000 EA
MG1000G27	MED CHARCOAL METALLIC GREY 400-0096	0.014 GA
10XF0440S02	04-40 X 1/8 TYPE F HEX HD STAINLESS STIC	2.000 EA
33CB4800A02	CAPACITOR COVER, STAMPED	1.000 EA
SP5051B16	MDL 34 TORQ STAT SW,TYPE L , STD F1 & F2	1.000 EA
HA3100A38	THRUBOLT 10-32 X 9.375	4.000 EA

<b>Parts List (continued)</b>		
<b>Part Number</b>	<b>Description</b>	<b>Quantity</b>
MN416A01	TAG-INSTAL-MAINT no wire (1200/bx) 11/14	1.000 EA
LB1119N	WARNING LABEL	1.000 EA
LB1087	LABEL,MANUAL RESET (ROLL LABEL)	1.000 EA
LC0269	1PH,DV,REV,THERMAL,7 LD,L.AMP THRU HTR H	1.000 EA
NP1257L	ALUM UL CSA CC THERMAL REV MTG	1.000 EA
34PA1002	PKG GRP, PRINT PK1001A01	1.000 EA

**AC Induction Motor Performance Data**  
Record # 6916 - Typical performance - not guaranteed values

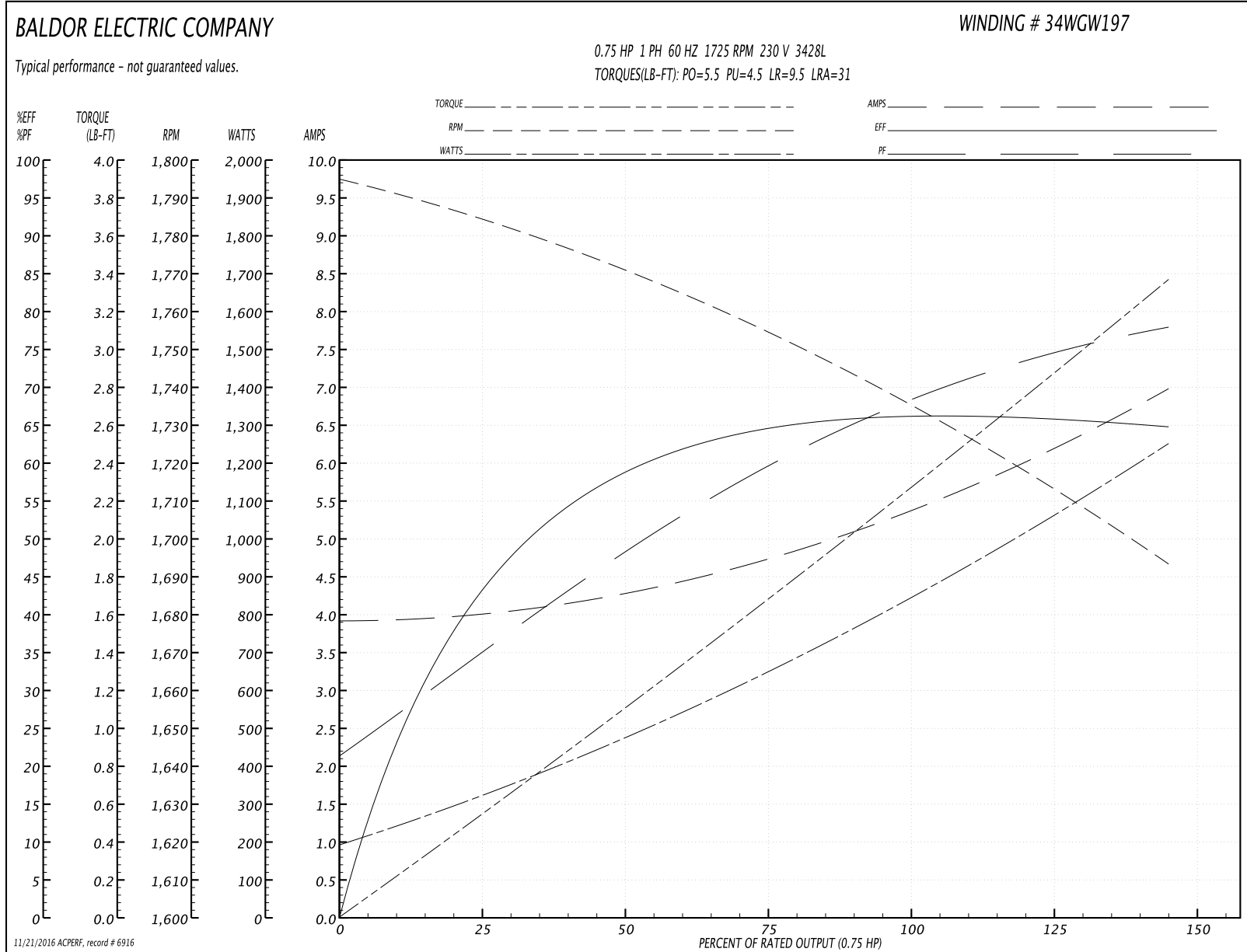
<b>Winding:</b> 34WGW197-R001	<b>Type:</b> 3428L	<b>Enclosure:</b> OPEN
-------------------------------	--------------------	------------------------

Nameplate Data				230 V, 60 Hz: High Voltage Connection	
Rated Output (HP)	.75			Full Load Torque	2.25 LB-FT
Volts	115/230			Start Configuration	direct on line
Full Load Amps	10.2/5.1			Breakdown Torque	5.5 LB-FT
R.P.M.	1725			Pull-up Torque	4.5 LB-FT
Hz	60	Phase	1	Locked-rotor Torque	9.5 LB-FT
NEMA Design Code	N	KVA Code	K	Starting Current	31 A
Service Factor (S.F.)	1.25			No-load Current	3.9 A
NEMA Nom. Eff.	68	Power Factor	68	Line-line Res. @ 25°C	3.1 Ω A Ph 1.64 Ω B Ph
Rating - Duty	40C AMB-CONT			Temp. Rise @ Rated Load	74°C
S.F. Amps	11.4/5.7			Temp. Rise @ S.F. Load	90°C

Load Characteristics 230 V, 60 Hz, 0.75 HP

% of Rated Load	25	50	75	100	125	150	S.F.
Power Factor	35	49	63	70	76	80	76
Efficiency	45.4	59.1	62.7	66.7	66.8	64.4	66.8
Speed	1783	1770	1754	1737	1717	1692	1717
Line amperes	4.05	4.25	4.8	5.3	6.1	7	6.1

Performance Graph at 230V, 60Hz, 0.75HP Typical performance - Not guaranteed values



**AC Induction Motor Performance Data**  
Record # 55550 - Typical performance - not guaranteed values

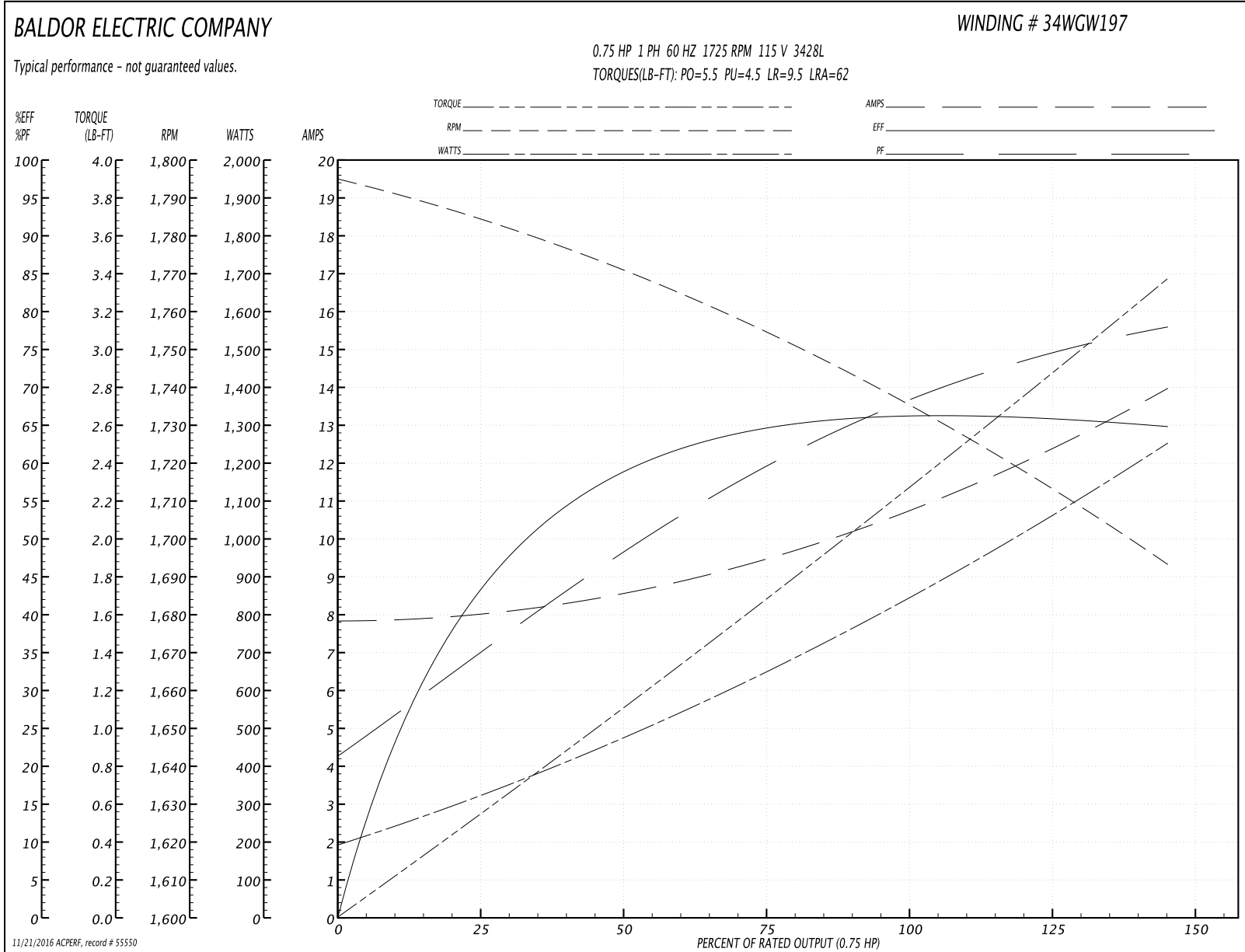
<b>Winding:</b> 34WGW197-R001	<b>Type:</b> 3428L	<b>Enclosure:</b> OPEN
-------------------------------	--------------------	------------------------

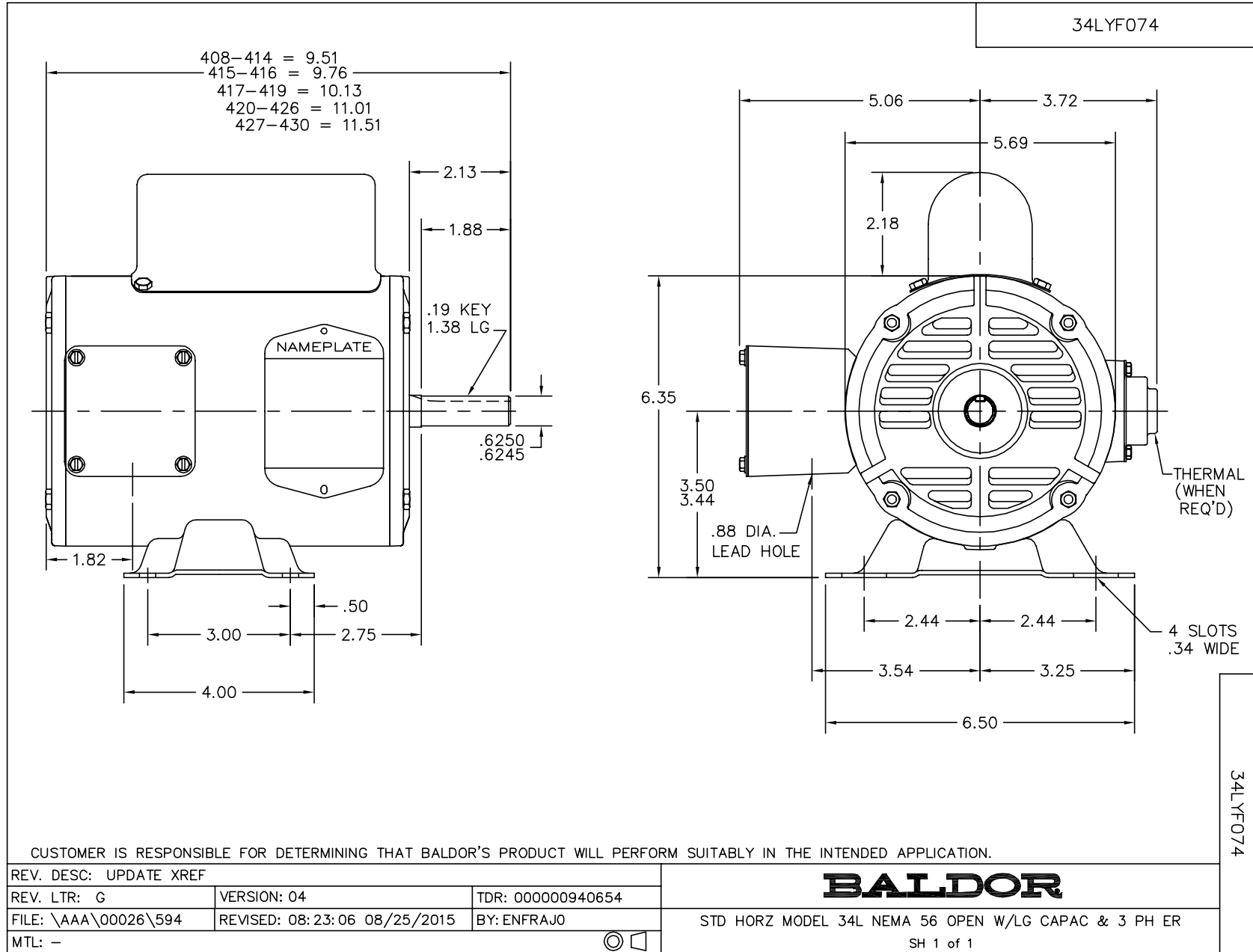
Nameplate Data				115 V, 60 Hz: Low Voltage Connection	
Rated Output (HP)	.75			Full Load Torque	2.25 LB-FT
Volts	115/230			Start Configuration	direct on line
Full Load Amps	10.2/5.1			Breakdown Torque	5.5 LB-FT
R.P.M.	1725			Pull-up Torque	4.5 LB-FT
Hz	60	Phase	1	Locked-rotor Torque	9.5 LB-FT
NEMA Design Code	N	KVA Code	K	Starting Current	62 A
Service Factor (S.F.)	1.25			No-load Current	7.8 A
NEMA Nom. Eff.	68	Power Factor	68	Line-line Res. @ 25°C	0.732 Ω A Ph 1.7 Ω B Ph
Rating - Duty	40C AMB-CONT			Temp. Rise @ Rated Load	74°C
S.F. Amps	11.4/5.7			Temp. Rise @ S.F. Load	90°C
				Locked-rotor Power Factor	94.7
				Rotor inertia	0.0665 LB-FT <sup>2</sup>

Load Characteristics 115 V, 60 Hz, 0.75 HP

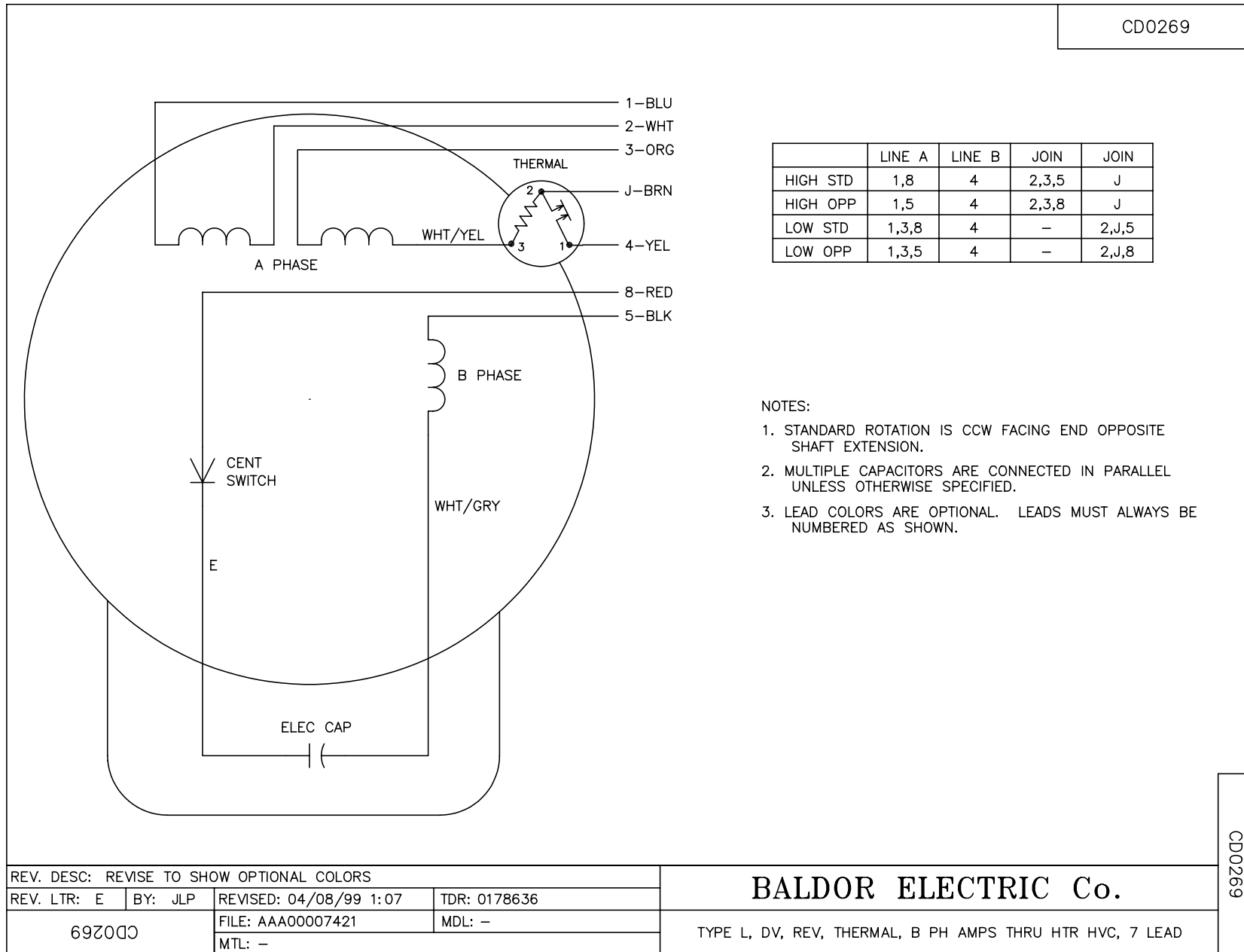
% of Rated Load	25	50	75	100	125	150	S.F.
Power Factor	34	49	61	68	73	78	73
Efficiency	45.4	59.3	62.8	66.7	66.8	64.5	66.8
Speed	1783	1770	1754	1737	1717	1692	1717
Line amperes	8.1	8.5	9.6	10.6	12.2	14	12.2

Performance Graph at 115V, 60Hz, 0.75HP Typical performance - Not guaranteed values





CD0269



NOTES:

1. STANDARD ROTATION IS CCW FACING END OPPOSITE SHAFT EXTENSION.
2. MULTIPLE CAPACITORS ARE CONNECTED IN PARALLEL UNLESS OTHERWISE SPECIFIED.
3. LEAD COLORS ARE OPTIONAL. LEADS MUST ALWAYS BE NUMBERED AS SHOWN.

REV. DESC: REVISE TO SHOW OPTIONAL COLORS			
REV. LTR: E	BY: JLP	REVISED: 04/08/99 1:07	TDR: 0178636
692000		FILE: AAA00007421	MDL: -
		MTL: -	

**BALDOR ELECTRIC Co.**

TYPE L, DV, REV, THERMAL, B PH AMPS THRU HTR HVC, 7 LEAD

CD0269