

# **BALDOR® • RELIANCE**

## **Product Information Packet**

# **VHECP4313T**

**75HP,3550RPM,3PH,60HZ,365HP,1464M,TEFC,F**

Part Detail							
Revision:	H	Status:	PRD/A	Change #:		Proprietary:	No
Type:	AC	Prod. Type:	A36068M	Elec. Spec:	A36WG0761	CD Diagram:	416820-002
Enclosure:	TEFC	Mfg Plant:		Mech. Spec:		Layout:	617428-035
Frame:	365HP	Mounting:	F1	Poles:	02	Created Date:	10-19-2010
Base:		Rotation:	R	Insulation:	F	Eff. Date:	03-30-2016
Leads:	3#2,6#4					Replaced By:	
Literature:		Elec. Diagram:					

Nameplate 000613007EW										
CAT.NO.	VHECP4313T			SPEC NO.	P36G3417					
HP	75	AMPS	161/80.7		VOLTS	230/460		DESIGN	B	
FRAME	365HP	RPM	3555		HZ	60	AMB	40	SF	1.15
DRIVE END BEARING	65BC03J30X			PH	3	DUTY	CONT		INSUL.CLASS	F
OPP D.E. BEARING	65BC03J30X			TYPE	P	ENCL	TEFC		CODE	F
D.E.BRG.DATA	6313			POWER FACTOR	91.5		NEMA NOM EFFICIENCY	94.5		
O.D.E.BRG.DATA	6313			MAX CORR KVAR	05.0		GUARANTEED EFFICIENCY	93.6		
3/4 LOAD EFF.	95.4			NEMA NOM/CSA QUOTED EFF			MOTOR WEIGHT	1042		
SER.NO.										

Nameplate 000901002AAA	
SUIT FOR 208V @ 179 AMPS	

Parts List		
Part Number	Description	Quantity
SA207167	SA P36G3417	1.000 EA
RA194434	RA P36G3417	1.000 EA
000613006PU	N/P (RELEASE QTY 10,000) UL CSA LABEL	1.000 EA
000613007EW	N/P BALDOR	1.000 EA
000692000FF	N/P	1.000 EA
000692000VD	LABEL WARNING	1.000 EA
000901002AAA	N/P BLANK	1.000 EA
421948032	LABEL, MYLAR	1.000 EA
004824015A	GREASE POLYREX EM	0.544 LB
032018008AK	HHCS 1/4-20X1 PLATED	4.000 EA
032018012DK	HHCS 1/2-13X1-1/2 PLTD.	4.000 EA
032018030CK	HHCS 3/8-16X3-3/4 PLATED	3.000 EA
032018024CK	HHCS 3/8-16X3 PLTD.	3.000 EA
034180012DA	KEY 1X4X1/4X1-1/2 L	1.000 EA
034530052AB	P/NIP 1/8X6-1/2 GALV.	1.000 EA
034690002AB	"unbulked" PPLG 1/4" PLTD.	1.000 EA
047174002D	EXT SNAP RING(360-440)	1.000 EA
078559042AE	F/C 360 078559001A	1.000 EA
085922073B	BRKT 360 085922072WCC KB	1.000 EA
415045002E	SLGR	1.000 EA
415072001B	CLAMP	1.000 EA
415096002A	CPLG 1/8 HEX TYPE	1.000 EA
418151057A	PLASTIC DRAIN,ODE BRKT	1.000 EA
032018010CK	HHCS 3/8-16X1-1/4 PLTD.	4.000 EA

<b>Parts List (continued)</b>		
<b>Part Number</b>	<b>Description</b>	<b>Quantity</b>
032018022CK	HHCS 3/8-16X2-3/4 PLTD	4.000 EA
702675001C	FAN 360	1.000 EA
032018012DK	HHCS 1/2-13X1-1/2 PLTD.	4.000 EA
034690002AB	"unbulked" PPLG 1/4" PLTD.	1.000 EA
089495002A	BRKT 360 089495001WCA	1.000 EA
410700004F	WSHR	1.000 EA
415045002E	SLGR	1.000 EA
418151057A	PLASTIC DRAIN,ODE BRKT	1.000 EA
033512004LB	HHTTS 1/4-20X1/2 PLTD.	1.000 EA
033512008LB	HHTTS 1/4-20X1 PLATED	4.000 EA
034000014AB	WSH ID.406 OD.812 TH.065	4.000 EA
034017014AB	LCKW 3/8 STD. PLATED	4.000 EA
035000001A	ALFTG 1/8" 1610-BL	1.000 EA
035000001A	ALFTG 1/8" 1610-BL	1.000 EA
048977006B	GRFTG - XP	1.000 EA
065776000C	TERBD 320-400	1.000 EA
067053000B	GASK 320-400	1.000 EA
076708000BB	C/B - 360	1.000 EA
076709000A	C/B - 360	1.000 EA
405851012AN	SPACE	4.000 EA
415000103D	T/LUG #4AWG-1/0AWG W/HOLE FOR .250 BOLT	1.000 EA
418150003A	GREASE FITTING CAP	1.000 EA
418150003A	GREASE FITTING CAP	1.000 EA
702641041A	D/CVR 360 SUB PAINT	1.000 EA

Product Information Packet: VHECP4313T - 75HP,3550RPM,3PH,60HZ,365HP,1464M,TEFC,F

032018012EK	HHCS 5/8-11X1-1/2L PLTD.	4.000 EA
033775004EA	DRSCR #6-1/4 304 S.S.	4.000 EA
034017018AB	LCKW 5/8"	4.000 EA
034000014AB	WSH ID.406 OD.812 TH.065	4.000 EA
034180024FA	KEY 3/8X3/8X3 L	1.000 EA
609013011C	LFT/P - 360	2.000 EA
14PA1000	PACKAGING 314 GROUP COMBINED PRINT	1.000 EA
MG1025N19	WILKO 778.50 BLUE GREEN - 55 GAL DRUMS	0.250 GA

REL. S.O.	FRAME	HP	TYPE	PHASE/HERTZ	RPM	VOLTS
	365HP	75	P	3/60	3555	230/460
AMPS	DUTY	AMB °C/ INSUL.	S.F.	NEMA DESIGN	CODE LETTER	ENCL.
161/80.7	CONT	40/F	1.15	F	F	TEFC
E/S	ROTOR	TEST S.O.	TEST DATE	STATOR RES. @25 °C (BETWEEN LINES)		
892019	418141005TE	---	---	.0186/.0744		

PERFORMANCE

LOAD	HP	AMPERES	RPM	POWER FACTOR %	EFFICIENCY %
NO LOAD	0	15.5	3600	7.78	0
1/4	18.8	24.4	3589	77.5	92.8
2/4	37.6	40.7	3579	90.8	95.1
3/4	56.2	59.9	3568	92.1	95.4
4/4	75.0	80.7	3556	91.5	95.0
5/4	93.8	102	3543	90.9	94.4

SPEED TORQUE

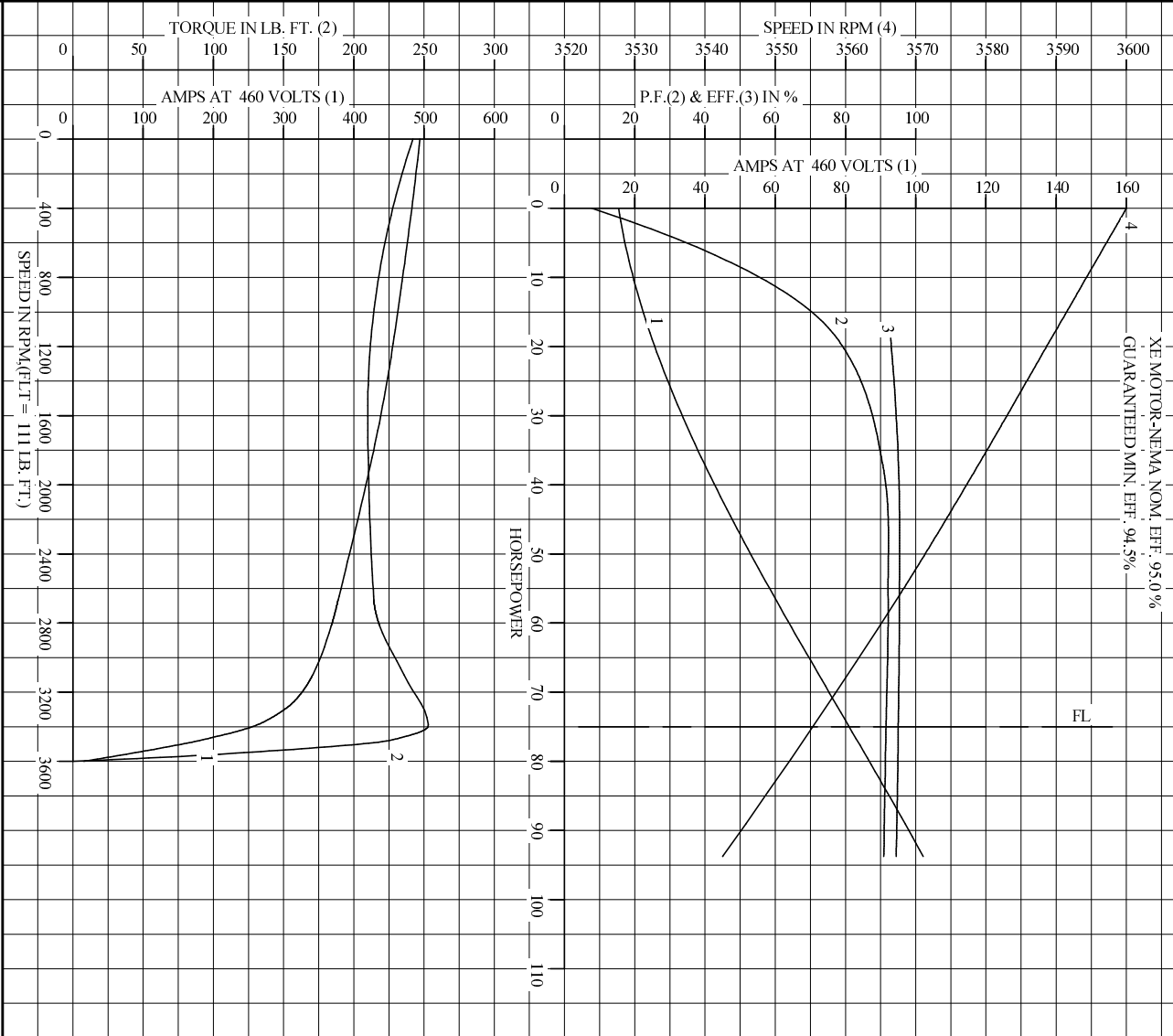
	RPM	TORQUE % FULL LOAD	TORQUE LB.-FT.	AMPERES
LOCKED ROTOR	0	218	242	494
PULL UP	1565	190	210	440
BREAKDOWN	3395	228	253	259
FULL LOAD	3556	100	111	80.7

AMPERES SHOWN FOR 460. VOLT CONNECTION. IF OTHER VOLTAGE CONNECTIONS ARE AVAILABLE, THE AMPERES WILL VARY INVERSELY WITH THE RATED VOLTAGE

REMARKS: TYPICAL DATA  
 XE MOTOR-NEMA NOM. EFF. 95.0 %  
 GUARANTEED MIN. EFF. 94.5%

<b>BALDOR</b>	DR. BY	J.J. HARRISON	<b>A-C MOTOR</b>	
	CK. BY	G. R. WEBB		<b>PERFORMANCE DATA</b>
	APP. BY	W.I. SMITH		
	DATE	10/16/02	ISSUE DATE	12/15/10

REL. S.O. \_\_\_\_\_ RPM 3555 S.F. 1.15 ROTOR 418141005TE  
 FRAME 365HP VOLTS 230/460 NEMA DESIGN F TEST S.O. TYPICAL DATA  
 HP 75 AMPS 161/80.7 CODE LETTER F TEST DATE ---  
 TYPE P DUTY CONT ENCLOSURE TEFC STATOR RES. @ 25 °C .0186/.0744  
 PHASE/HERTZ 3/60 AMB °C/INSUL 40/F E/S 892019 OHMS (BETWEEN LINES)



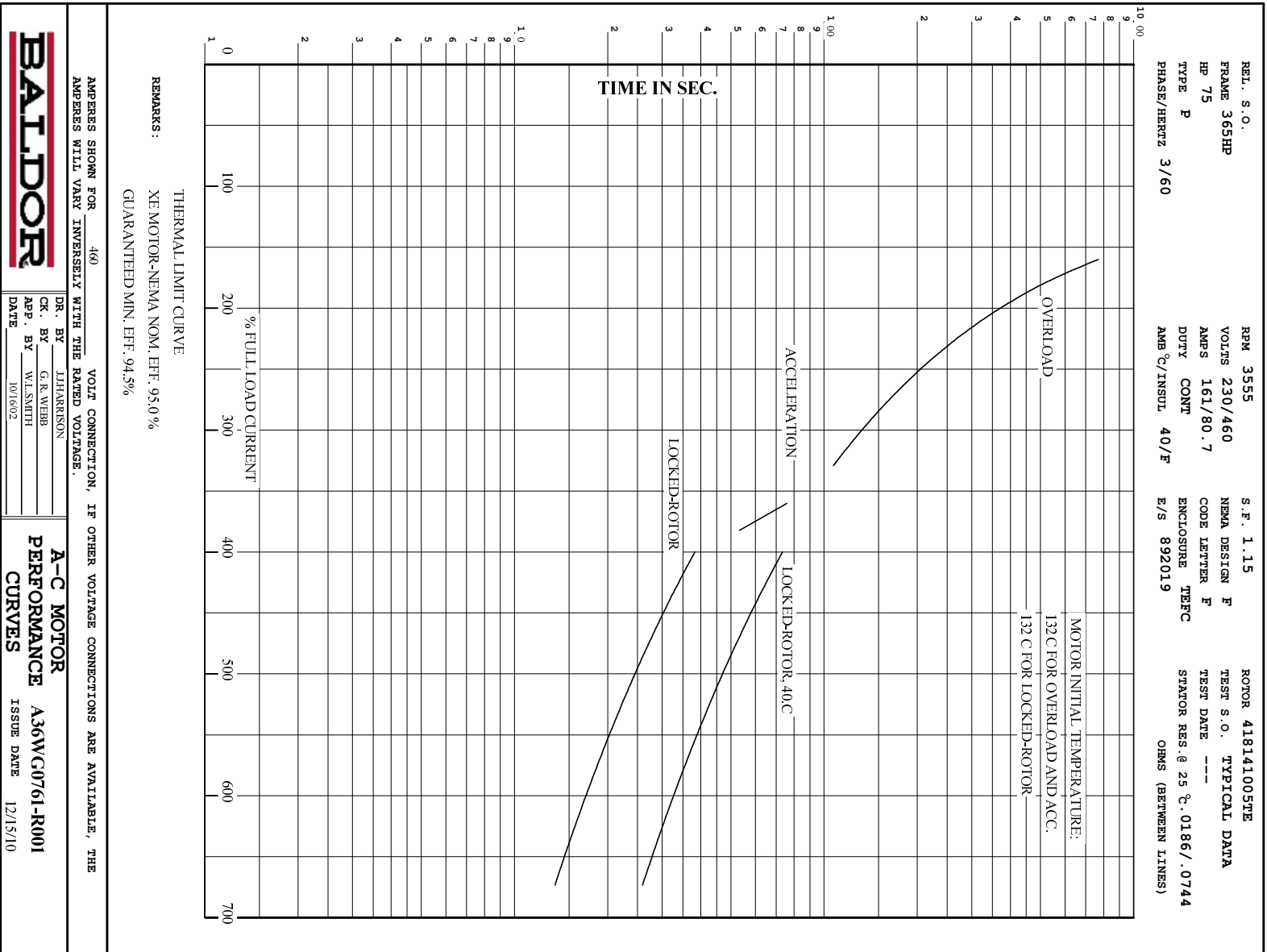
AMPERES SHOWN FOR 460 VOLT CONNECTION, IF OTHER VOLTAGE CONNECTIONS ARE AVAILABLE, THE AMPERES WILL VARY INVERSELY WITH THE RATED VOLTAGE.

**BALDOR**

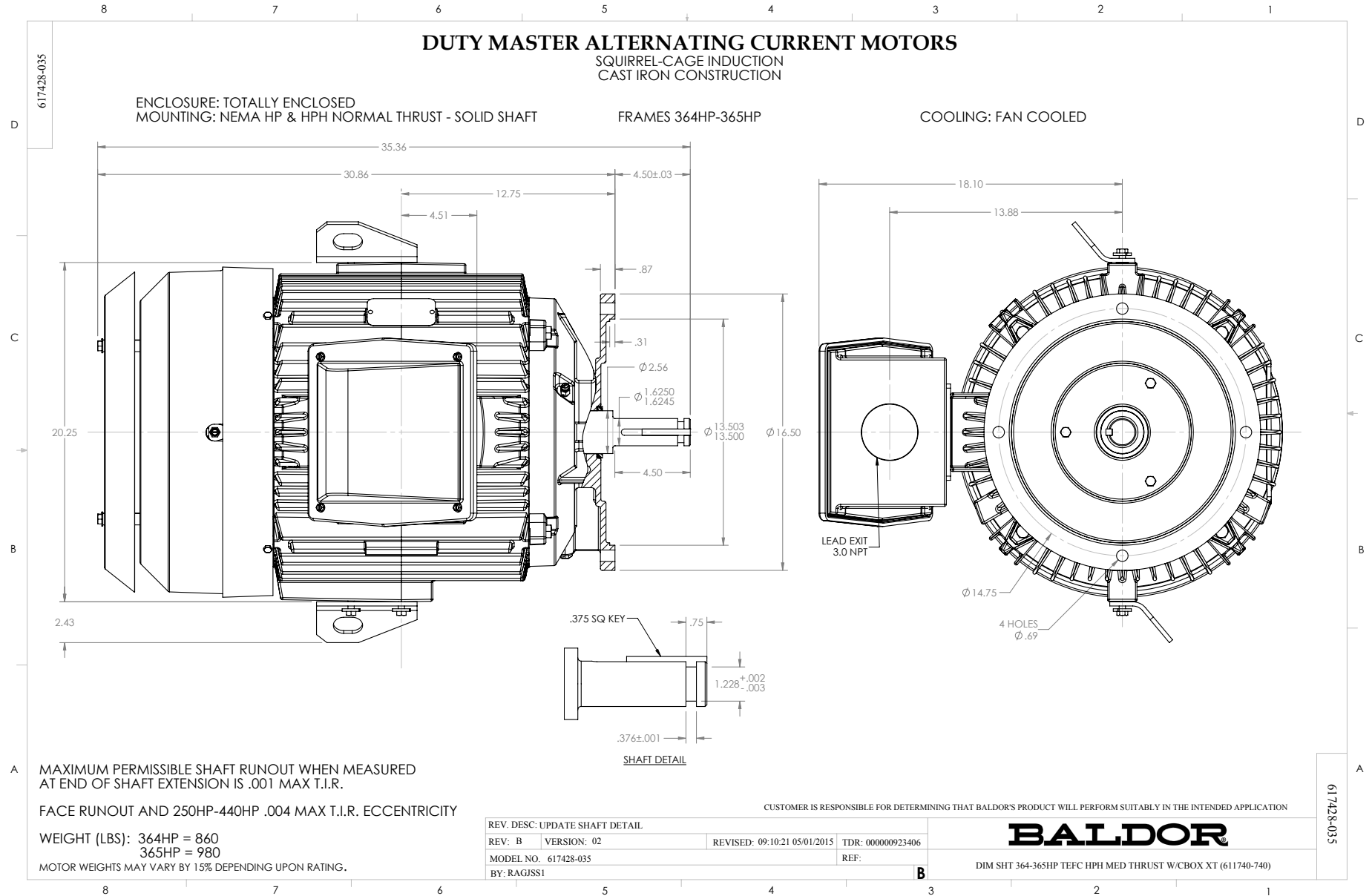
DR. BY J.HARRISON  
 CK. BY G.R.WEBB  
 APP. BY W.L.SMITH  
 DATE 10/16/02

**A-C MOTOR PERFORMANCE CURVES** A36WG0761-R001  
 ISSUE DATE 12/15/10

Printed on 12/15/10 9:28 @ psecs-motoreng

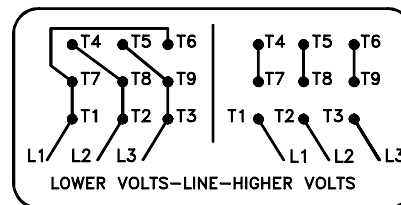
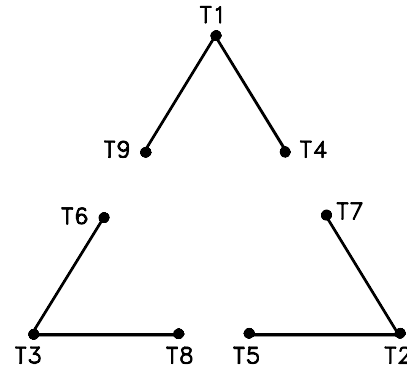


Printed on 12/15/10 9:28 @ psecs-motorer



416820-002

A-C MOTOR  
 CONNECTION DIAGRAM  
 STANDARD 9 LEAD DELTA-CONNECTED



(N.P. 1575-B)

416820-002

REV. DESC: LOADED TO BUS, C/R 335225		
REV. LTR: -	VERSION: 00	TDR: 000000538207
FILE: \MGA\00000\661	REVISED: 10:47:51 04/30/2010	
MTL: -	BY: RAGRA	

**BALDOR**

CONN DIAG - STANDARD 9 LEAD, DELTA-CONNECTED

SH 1 of 1

Marketing maintained PDF of MN408:

<http://www.baldor.com/support/Literature/Load.ashx/MN408?ManNumber=MN408>

Marketing maintained PDF of MN416:

<http://www.baldor.com/support/Literature/Load.ashx/MN416?ManNumber=MN416>