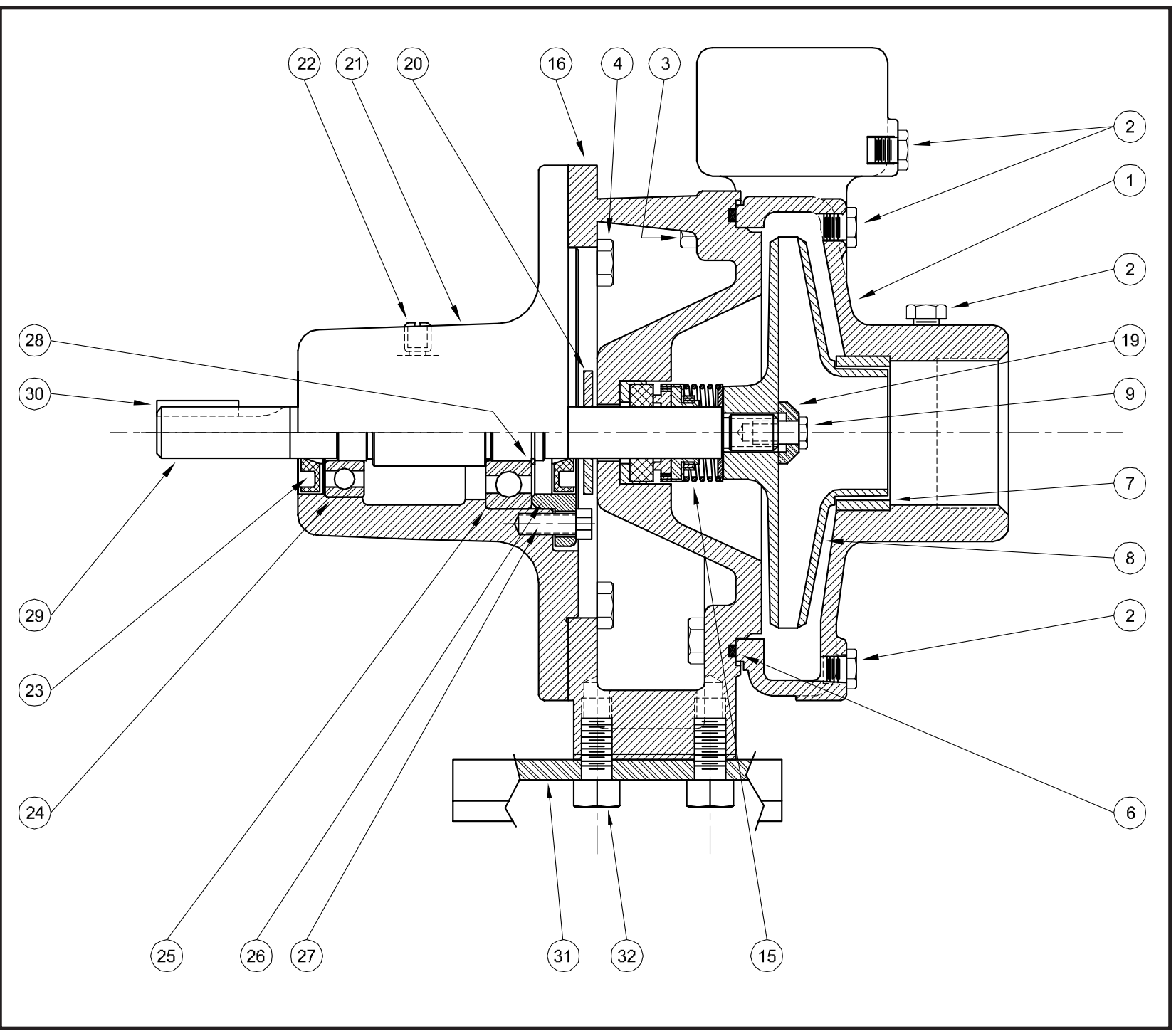


Series: GNA5-1-1/4 & GNA6-1-1/4

**BURK'S**<sup>®</sup>  
www.cranepumps.com

*Centrifugals - Base Mounted*



SECTION CBMP  
PAGE 44  
DATE 2/05

**CRANE**<sup>®</sup>  
A Crane Co. Company

**PUMPS & SYSTEMS**

USA: (937) 778-8947 • Canada: (905) 457-6223 • International: (937) 615-3598

SYMBOL NUMBER	PART NUMBER	QTY	DESCRIPTION
<b>DIFFERING PARTS FOR ALL BRONZE CONSTRUCTION</b>			
++ 1	22148-A	1	Casing Assy - GNA5-1-1/4
	22149-A	1	Casing Assy - GNA6-1-1/4
3	03288	4	Cap Screw
4	03122-A	4	Cap Screw
16	09630-A	1	Adapter - GNA5-1-1/4
19	09657-A	1	Adapter - GNA6-1-1/4
32	03289	2	Cap Screw
33	20056	2	Washer
<b>DIFFERING PARTS FOR ALL IRON CONSTRUCTION</b>			
++ 1	22148-B	1	Casing Assy - GNA5-1-1/4
	22149-B	1	Casing Assy - GNA6-1-1/4
2	00158	5	Pipe Plug - 1/8"
7	09632-C	1	Wear Ring
* 8	09680-C	1	Impeller - GNA5-1-1/4
	09680-C	1	Impeller - GNA6-1-1/4
	21181-A	1	Washer - SS
<b>DIFFERING PARTS FOR ALL GNA5-1-1/4 SS CONSTRUCTION</b>			
++ 1	09633-B	1	Casing Assy
2	01691-B	5	Plug
4	03122-B	4	Cap Screw
5	04235-A	4	Cap Screw
6	23023	1	O-Ring - Buna-N (Std.)
	21021	1	O-Ring - Viton
7	09632-B	1	Wear Ring
* 8	09680-B	1	Impeller
16	09630-B	1	Adapter
19	21181-A	1	Washer
32	1-529-1	2	Cap Screw
33	20056	2	Washer

(\*) Specific impeller diameter is identified by the last 3 digits of the Pump Catalog Number. To order correct impeller, this 3 digit suffix must be added to basic impeller number listed above. EXAMPLE: For Pump Catalog No. GNA5-1-1/4-4.50, Order Impeller Part No. 09680-4.50.

(\*\*) For hot water or Caustic service.  
 (+) Series GNA5-1-1/4 and GNA6-1-1/4 pumps have been manufactured with either flat or O-ring type gaskets. Determine which type is required before ordering. When in doubt, order flat gaskets.

(++) Includes Symbols 2 & 7.

SYMBOL NUMBER	PART NUMBER	QTY	DESCRIPTION
++ 1	22148	1	Casing Assy - GNA5-1-1/4
	22149	1	Casing Assy - GNA6-1-1/4
2	01691-A	5	Plug - 1/8" Pipe
3	04235	4	Cap Screw
4	03122	4	Cap Screw
	09634	1	Flat Gasket - GNA5-1-1/4
	08507	1	Flat Gasket - GNA6-1-1/4
<b>GNA5-1-1/4 PUMP SERIES</b>			
+ 6	21333	1	O-Ring Gasket - Buna-N (Std)
	21546	1	O-Ring Gasket - Viton
	22132	1	O-Ring Gasket - EPT**
	22058	1	O-Ring Gasket - Teflon
<b>GNA6-1-1/4 PUMP SERIES</b>			
	22021	1	O-Ring Gasket - Buna-N (Std)
	22020	1	O-Ring Gasket - Viton
	22133	1	O-Ring Gasket - EPT**
	22102	1	O-Ring Gasket - Teflon
7	09632-D	1	Wear Ring
* 8	09680	1	Impeller - GNA5-1-1/4
	09680	1	Impeller - GNA6-1-1/4
9	21182	1	Screw
	08514	1	Mechanical Seal - Buna-N (Std)
	09762	1	Mechanical Seal - Viton
	20764	1	Mechanical Seal - EPT**
	09630	1	Adapter - GNA5-1-1/4
	09657	1	Adapter - GNA6-1-1/4
19	21181-C	1	Washer
20	08105	1	Slinger Washer
21	20972	1	Bearing Housing
22	01691	1	Plug
23	20997	2	Seal
24	00629	1	Bearing - outboard
25	21000	1	Bearing - inboard
26	20973	1	Cover, Inboard Bearing
27	03121	2	Screw
28	085326	1	Retaining Ring
29	20974	1	Shaft
30	01420	1	Key
31	21060	1	Base
32	01928	2	Cap Screw
33	03503	2	Washer
	21061	1	Power Frame Assy. (Includes Symbol Numbers 20 thru 30)