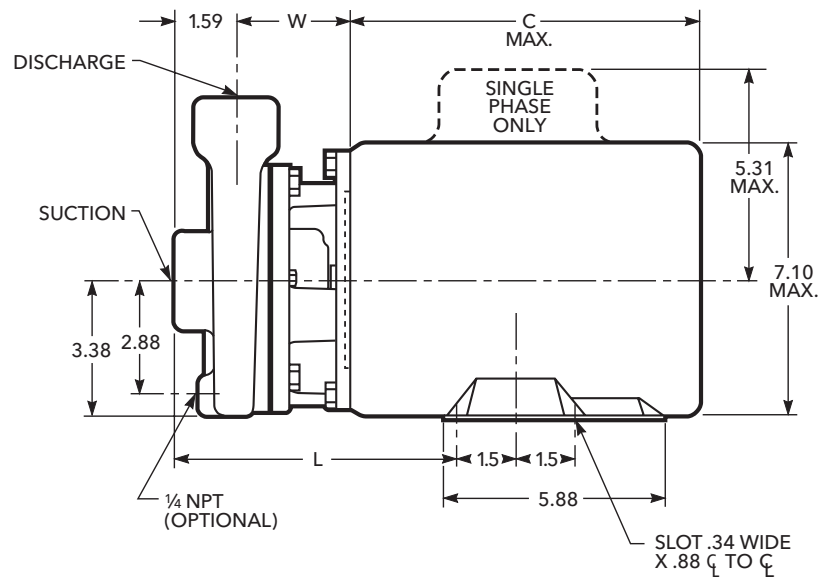
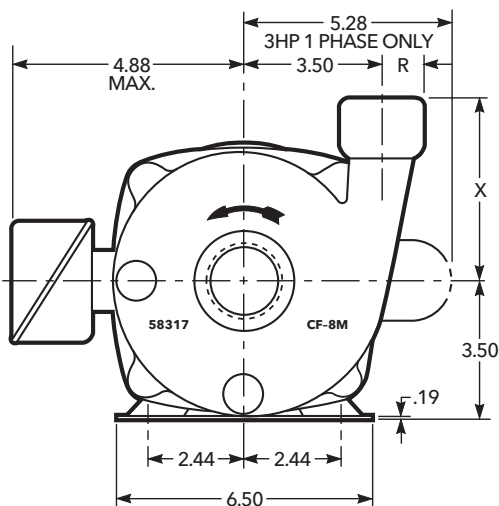


ICS Dimension Print

STAINLESS STEEL, CLOSE-COUPLED CENTRIFUGAL PUMPS 3 HP

ENGINEERING DATA

Clockwise Rotation Viewed from Drive End	Installation Drawing No. 119-61	Certified for construction purposes	
		<input type="checkbox"/> For Approval	For Record <input type="checkbox"/>
By _____		Signature _____	Date _____



WEIGHTS AND DIMENSIONS - DETERMINED BY PUMP

Pump Size	Suction NPT	Discharge NPT	L	R	W	X	*Weight Max.
1 x 1¼-5	1¼	1	7.35	.94	3.01	4.62	17
1¼ x 1½-5	1½	1¼	7.22	1.06	2.88	4.56	17

NOTES:

1. Pumps will be shipped with top vertical discharge as standard, for other orientations, remove casing bolts, rotate to desired position, and tighten ⅜" bolts to 24 lbs.-ft.
2. Dimensions in inches, weight in pounds.
3. Not to be used for construction purposes unless certified.
4. Motor dimensions may vary with motor manufacturers.

*** Weight is liquid end only. For complete pump, add weight of applicable motor.**

AVAILABLE MOTOR WEIGHTS

HP	Motor Weight				C Max. Length
	1 Phase		3 Phase		
	ODP	TEFC	ODP	TEFC	
3	40	45	42	37	12⅙

Xylem Inc.

2881 East Bayard Street Ext., Suite A, Seneca Falls, NY 13148

Phone: (800) 453-6777 Fax: (888) 322-5877

www.xylem.com/brands/gouldswatertechnology

