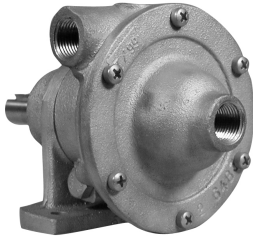


BRONZE CLOSE COUPLED CENTRIFUGAL PUMP

CENTRIFUGAL PUMPS SERIES 50P

PERFORMANCE



FEATURES

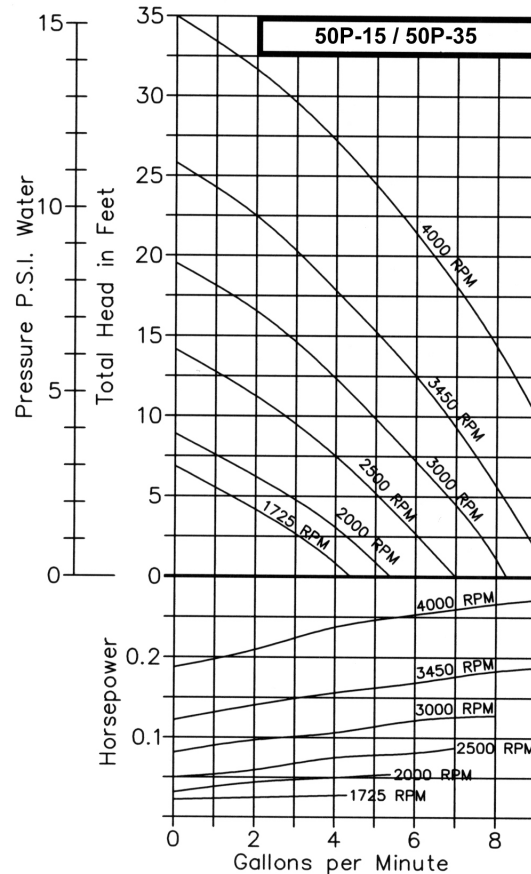
- All Bronze Construction
- Heavy Duty Ball Bearings
- Designed for Pulley Drive
- Mechanical Seal
- Quiet Operation
- Handles Contaminated Liquids
- No Lubrication Required

DRIVE

The pedestal centrifugal pumps can be direct driven by electric motors at either 3450 R.P.M. or 1725 R.P.M. Performance for both speeds are shown in the curves above. The 50P pedestal centrifugal pump can be pulley driven at any desired intermediate speed.

LIQUIDS AND TEMPERATURE

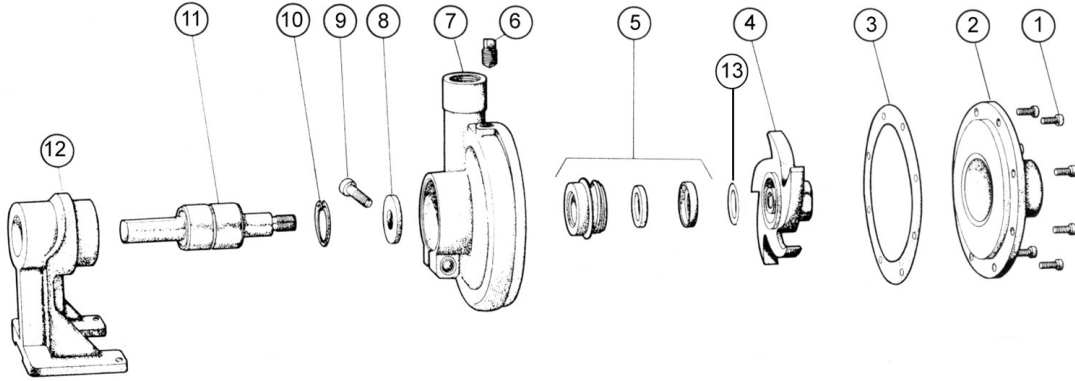
Because centrifugal pumps are more efficient at higher shaft speeds, pumping of viscous or thick liquids is difficult. It is possible to lose as much as 40% pump performance when attempting to pump liquids of viscosity equal to S.A.E. 30 oil at room temperature. SAE 30 oil at room temperature has a viscosity of 2000 Saybolt Seconds Universal. More viscous liquids are not recommended for centrifugal pumps. Heavy liquids can be pumped; however, they demand more horsepower in direct ratio to the weight of water. For example, carbon tetrachloride has a specific gravity of 1.6 which means it is 1.6 times heavier than water and the horsepower required is 1.6 times water horsepower.



SUCTION LIFT

This centrifugal pump is not self-priming. Normally these pumps must be installed below the liquid level so that the liquid flows to the pump by gravity. However, if a foot valve is used at the beginning of the suction line and all air is bled from the suction line and pump by careful manual priming, these pumps will lift liquid on the suction side up to 15 ft. Such a system is only as positive as the ability of the foot valve to seal and keep the suction line and pump full of liquid. If the foot valve should leak, the pump will not prime.

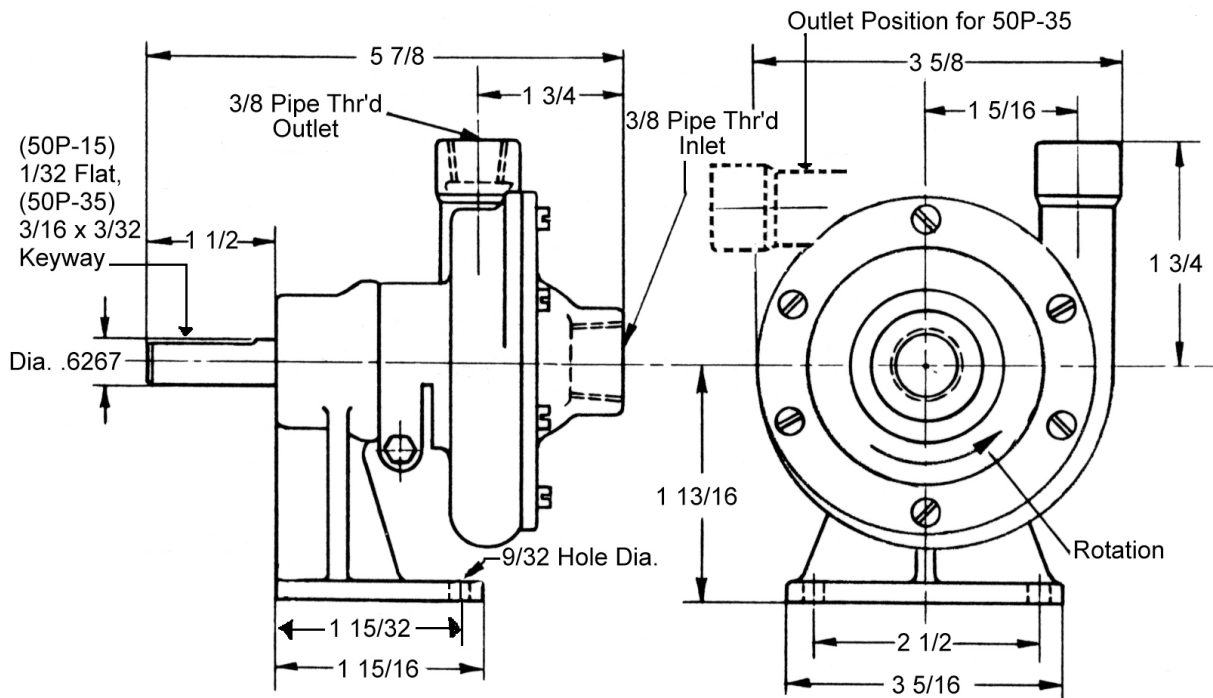
EXPLODED VIEW AND PARTS LIST



	1	2	3*	4*	5*	6	7	8	9	10	11*	12	13	Repair Kit
	Screw	Cover	Gasket	Impeller	Seal Assy	Plug	Body	Slinger	Screw	Ret. Ring	Shaft & Bearing	Pedestal	Shim	
Model	Qty. 6	Qty. 1	Qty. 1	Qty. 1	Qty. 1	Qty. 1	Qty. 1	Qty. 1	Qty. 4	Qty. 1	Qty. 1	Qty. 1	Qty. 1	
50P-15	5385	6483	6502	6476	32154	6052	6475	---	5595	5741	5348	6484	602502	10690
50P-35	5385	6483	6502	6476	32154	6052	6475	7447	5595	5741	8114	6484	602502	11369

* Repair kit contains items 3, 4, 5, 11.

DIMENSIONS



SHAFT SEAL OPTIONS

Mechanical Shaft Seals have Nitrile rubber components (212°F max) as standard. For temperatures up to 400°F a fluoroelastomer seal must be selected by adding code S10 to the pump number. In most instances, fluoroelastomer seals are not field interchangeable with the standard Nitrile seals. Call factory for details.