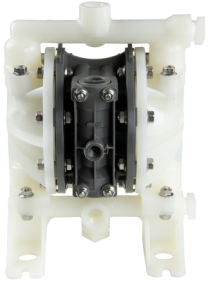
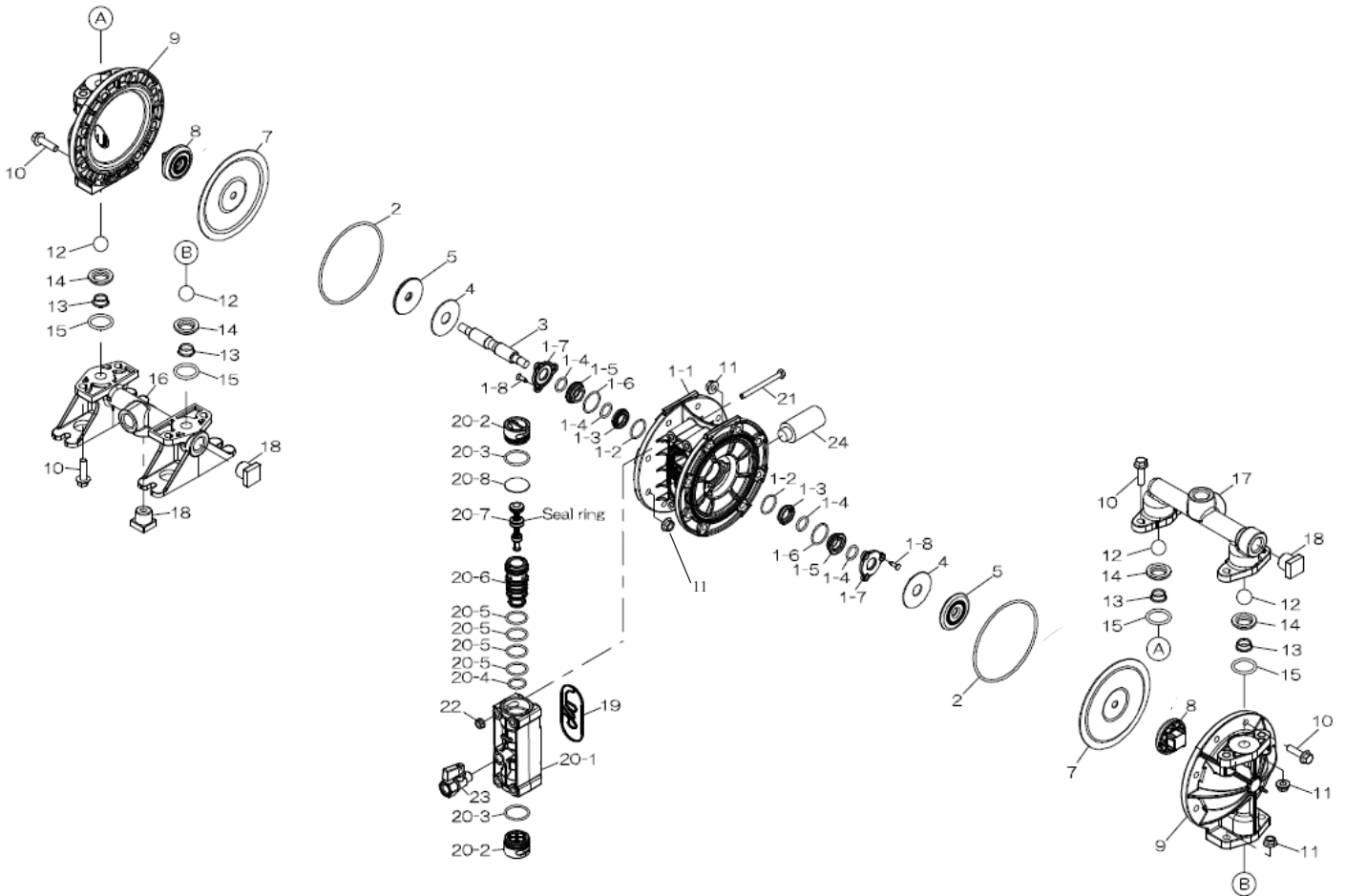


Air Operated Double Diaphragm Pump



Trial Program



Air Operated Double Diaphragm Pump

G15VS11		G15VH11		***NPT PUMPS***	
NPT	854986	854987			
REF. No.	PARTS No.	PARTS No.	DESCRIPTION	QTY	REORDER
1	805217	805217	BODY ASSY (G15P/V) NPT	1	
1-1	773410	773410	BODY (G15P/V) NPT	1	
1-2	686893	686893	O RING	2	
1-3	773385	773385	GUIDE BUSH A	2	
1-4	640015	640015	O RING	4	
1-5	780301	780301	GUIDE BUSH B	2	
1-6	684900	684900	O-RING	2	
1-7	773384	773384	GUIDE BUSH STOPPER	2	
1-8	686894	686894	TAPPING SCREW	6	
2	640147	640147	O RING	2	
3	717100	717100	CENTER ROD SUS	1	
4	773278	773278	CUSHION	2	
5	716923	716923	CENTER DISK (INNER)	2	
7	773315	773316	DIAPHRAGM	2	
8	773400	773400	CENTER DISK (OUTER)	2	
9	780304	780304	OUT CHAMBER	2	
10	686892	686892	BOLT W/ FLANGE	24	
11	686032	686032	NUT W/ FLANGE	24	
12	773424	773374	BALL	4	
13	773432	773432	SEAT B	4	
14	773431	773431	SEAT A	4	
15	684114	640025	O RING	4	
16	780309	780309	MANIFOLD B NPT	1	
17	773404	773404	MANIFOLD A NPT	1	
18	773402	773402	PLUG NPT	3	
19	773407	773407	GASKET	1	
20	805210	805210	VALVE BODY ASSY	1	
20- 1	833226	833226	VALVE BODY NPT	1	
20- 2	773383	773383	CAP	2	
20- 3	683112	683112	O RING	2	
20- 4	685453	685453	O RING	1	
20- 5	685276	685276	O RING	4	
20- 6	780302	780302	SLEEVE	1	
20- 7	805208	805208	SPOOL ASSY	1	
20- 8	773428	773428	CUSHION	1	
21	621115	621115	BOLT (SUS304)	4	
22	684086	684086	FLANGE NUT SERRATED	4	
24	686762	686762	SILENCER NPT 3/8"	1	
KIT	KG15-VS	KG15-VH	LIQUID END		
KIT	KG15-AM-P		AIR MOTOR		

**General Tools:**

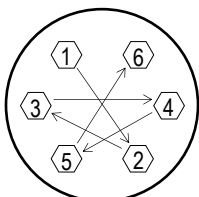
- Socket wrench - 10mm, 12mm
- Hexagonal box wrenches - 5mm
- Open-end wrench - 12mm, 22mm
- Phillips head screw driver
- Snap ring pliers

**Special Tools:**

- Sleeve remover (713148)

**Miscellaneous:**

- Assembly Oil—turbine oil none additional class 1 (equivalent to ISO VEGA32 grade)
- Urea grease grade (NLGI) No. 2
- Thread locking agent (equivalent to LOCTITE® 243)



**Tightening torque for center rod and out chambers.**

Center Rod 177 in-lbf {20 N-m}  
Out Chambers 89 in-lbf {10 N-m}

**Tightening torque for manifold retainer bolts.**

G15V/S/H 89 in-lbf {10 N-m}

**Customer Notes**

Model #: \_\_\_\_\_  
Description: \_\_\_\_\_  
Serial #: \_\_\_\_\_  
Date Installed: \_\_\_\_\_  
Department Location: \_\_\_\_\_  
Tag/Project: \_\_\_\_\_