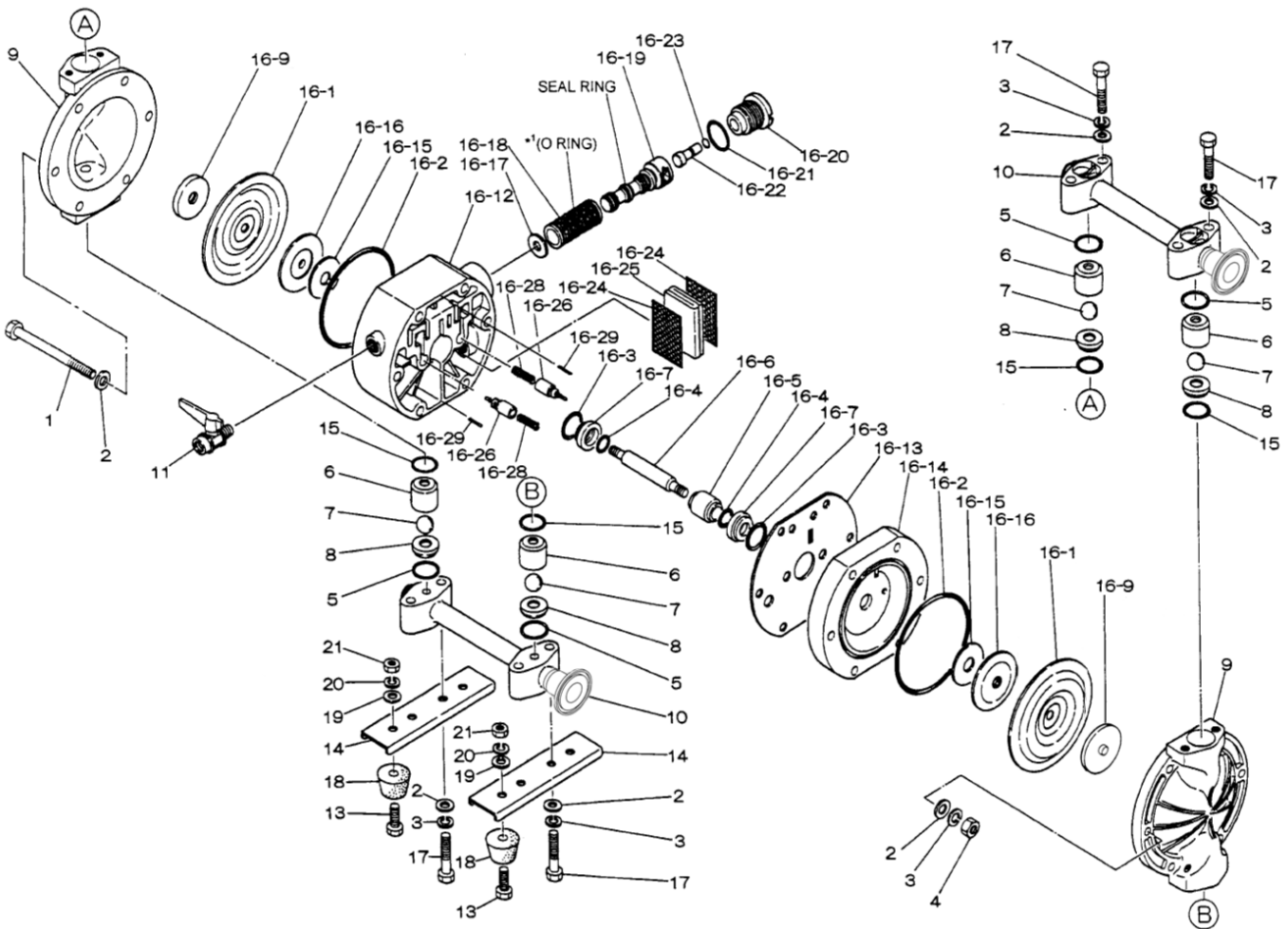
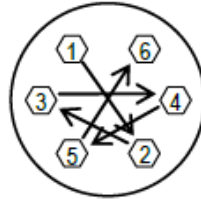


Air Operated Double Diaphragm Pump



Air Operated Double Diaphragm Pump

REF. NO.	PART NO.	DESCRIPTION	QTY.	REORDER
1	683224	BOLT	6	
2	631329	PLAIN WASHER	20	
3	681300	SPRING LOCK WASHER	14	
4	628012	NUT	6	
5	643025	O-RING	4	
6	711502-EP	VALVE STOPPER	4	
7	771524	BALL	4	
8	711382-EP	VALVE SEAT	4	
9	711380-EP	OUT CHAMBER	2	
10	711506-TC-EP	MANIFOLD	2	
11	683055	BALL VALVE	1	
13	621102	BOLT	4	
14	717185	BASE	2	
15	643130	O-RING	4	
16-1	771372	DIAPHRAGM	2	
16-2	640144	O-RING	2	
16-3	640020	O-RING	2	
16-4	684284	V-PACKING	2	
16-5	771337	GUIDE	1	
16-6	710578	CENTER ROD	1	
16-7	771336	BUSHING	2	
16-9	780179	CENTER DISK OUTER	2	
16-12	780029	BODY A	1	
16-13	771347	GASKET	1	
16-14	780030	BODY B	1	
16-15	771342	CUSHION	2	
16-16	771344	CENTER DISK INNER	2	
16-17	771483	CUSHION	1	
16-18	804249	SLEEVE ASSEMBLY	1	
16-18-*1	683123	O-RING (SLEEVE O.D.)	6	
16-19	802835	C SPOOL VALVE ASSY	1	
16-19 seal	771484	SEAL RING	5	
16-20	771695	CAP	1	
16-21	640022	O-RING	1	
16-22	771350	RESET BUTTON	1	
16-23	640002	O-RING	1	
16-24	771589	MESH	2	
16-25	771465	SILENCER	1	
16-26	832141	VALVE GUIDE ASSY.	2	
16-28	710577	SPRING	2	
16-29	632752	SPRING PIN	2	
17	621155	BOLT	8	
18	771123	CUSHION	4	
19	631328	PLAIN WASHER	4	
20	681855	SPRING LOCK WASHER	4	
21	628010	NUT	4	
KIT	K15-MH-FDA	LIQUID END		
KIT	K15-AM	AIR MOTOR		



Tightening torque for center rod and out chambers.

Center Rod 122 in-lbf (14 N-m)
Out Chambers 105 in-lbf (12 N-m)

Tightening torque for manifold retainer bolts.

BSH-FDA 105 in-lbf(12 N-m)

General Tools:

- Socket wrenches - 13mm
- Open-end wrenches - 13mm, 21mm

Specialty Tools (sold separately):

- Cap and disk remover - (771132)
- Sleeve remover - (713148)

Miscellaneous:

- Assembly oil - turbine of none additional class 1 (equivalent to ISO VG32 grade)
- Nuts - M8x1.25
- Grease - Urea grease grade (NLGI) No. 2

Customer Notes

Model #: _____
 Description: _____
 Serial #: _____
 Date Installed: _____
 Department Location: _____
 Tag/Project: _____