

# **BALDOR® • RELIANCE**

## **Product Information Packet**

# **EBM3615TY**

**5HP,1750RPM,3PH,60HZ,184T,3642M,TEFC,F1**

| Part Detail |      |                |       |             |          |               |            |
|-------------|------|----------------|-------|-------------|----------|---------------|------------|
| Revision:   | C    | Status:        | PRD/A | Change #:   |          | Proprietary:  | No         |
| Type:       | AC   | Prod. Type:    | 3642M | Elec. Spec: | 36WGS268 | CD Diagram:   | CD0005     |
| Enclosure:  | TEFC | Mfg Plant:     |       | Mech. Spec: | 36A021   | Layout:       | 36LYA021   |
| Frame:      | 184T | Mounting:      | F1    | Poles:      | 04       | Created Date: | 10-08-2015 |
| Base:       | RG   | Rotation:      | R     | Insulation: | F        | Eff. Date:    | 10-26-2016 |
| Leads:      | 9#16 |                |       |             |          | Replaced By:  |            |
| Literature: |      | Elec. Diagram: |       |             |          |               |            |

| Nameplate NP1259L |              |  |      |    |                |      |  |      |    |   |
|-------------------|--------------|--|------|----|----------------|------|--|------|----|---|
| CAT.NO.           | EBM3615TY    |  |      |    |                |      |  |      |    |   |
| SPEC.             | 36A021S268G2 |  |      |    |                |      |  |      |    |   |
| HP                | 5            |  |      |    |                |      |  |      |    |   |
| VOLTS             | 230/460      |  |      |    |                |      |  |      |    |   |
| AMP               | 13.4/6.7     |  |      |    |                |      |  |      |    |   |
| RPM               | 1750         |  |      |    |                |      |  |      |    |   |
| FRAME             | 184T         |  |      |    | HZ             | 60   |  |      | PH | 3 |
| SER.F.            | 1.15         |  | CODE | J  | DES            | B    |  | CL   | F  |   |
| NEMA-NOM-EFF      | 89.5         |  | PF   | 78 |                |      |  |      |    |   |
| RATING            | 40C AMB-CONT |  |      |    |                |      |  |      |    |   |
| CC                | 010A         |  |      |    | USABLE AT 208V |      |  | 13.9 |    |   |
| DE                | 6206         |  |      |    | ODE            | 6205 |  |      |    |   |
| ENCL              | TEFC         |  | SN   |    |                |      |  |      |    |   |

| Parts List    |  |          |
|---------------|--|----------|
| Part Number   | Description                              | Quantity |
| SA308656      | SA 36A021S268G2                          | 1.000 EA |
| RA295992      | RA 36A021S268G2                          | 1.000 EA |
| 36CB3004      | 36 CB CASTING W/1.09 DIA LEAD HOLE @ 6:0 | 1.000 EA |
| 36GS1000      | GASKET-CONDUIT BOX, .06 THICK #SV-330 LE | 1.000 EA |
| 51XB1016A07   | 10-16 X 7/16 HXWSSLD SERTYB              | 2.000 EA |
| 11XW1032G06   | 10-32 X .38, TAPTITE II, HEX WSHR SLTD U | 1.000 EA |
| HW3001B01     | BRASS CUP WASHER, FOR #8 SCREW           | 1.000 EA |
| 36EP3306A05   | FR ENDPLATE, TAP FOR T-BOLT, W/O TIGHTSL | 1.000 EA |
| HW4500A01     | 1641B(ALEMITE)400 UNIV, GREASE FITT      | 1.000 EA |
| HW5100A05     | WVY WSHR F/205 & 304 BRGS                | 1.000 EA |
| 36EP3100A02   | PU ENDPLATE, MACH                        | 1.000 EA |
| HW4500A01     | 1641B(ALEMITE)400 UNIV, GREASE FITT      | 1.000 EA |
| HW2501D08     | KEY, 3/16 SQ X .875 AUTO                 | 1.000 EA |
| 51XB1214A16   | 12-14X1.00 HXWSSLD SERTYB                | 1.000 EA |
| HW2500A16     | EY, USA #606, WOODRUFF                   | 1.000 EA |
| 36FH4009A05SP | IEC FH,GREASER & 1.38 SHAFT HOLE,W/      | 1.000 EA |
| 51XW1032A06   | 10-32 X .38, TAPTITE II, HEX WSHR SLTD S | 3.000 EA |
| 36CB4516      | 36 LIPPED CB LID                         | 1.000 EA |
| 37GS1001      | GASKET, CONDUIT BOX LID, .06 THICK LEXID | 1.000 EA |
| 51XW0832A07   | 8-32 X .44, TAPTITE II, HEX WSHR SLTD SE | 4.000 EA |
| HW2501E16     | 3KEY, 1/4 SQ X 1.750                     | 1.000 EA |
| HA7000A02     | KEY RETAINER RING, 1 1/8 DIA, 1 3/8 DIA  | 1.000 EA |
| 85XU0407S04   | 4X1/4 U DRIVE PIN STAINLESS              | 2.000 EA |
| HW3200A01     | 3/8-16X3/4 I-BLT WELDED F/S              | 1.000 EA |

| <b>Parts List (continued)</b> |  |                 |
|-------------------------------|--|-----------------|
| <b>Part Number</b>            | <b>Description</b>                       | <b>Quantity</b> |
| MJ1000A02                     | GREASE, POLYREX EM EXXON (USe 4824-15A)  | 0.050 LB        |
| 36FN3000A02SP                 | EXFN, PLASTIC, 7.00 OD, 1.175 ID         | 1.000 EA        |
| MG1000Y03                     | MUNSELL 2.53Y 6.70/ 4.60, GLOSS 20,      | 0.022 GA        |
| 84XN3816J36                   | 3/8-16X2-1/4 SOCK HD, BK OX              | 4.000 EA        |
| HA3101A28                     | THRUBOLT 1/4-20 X 12.500 OHIO ROD        | 4.000 EA        |
| 76BK6100DQF                   | 1-056-061-00-DQF BRAKE TDR 96653         | 1.000 EA        |
| LB1115N                       | LABEL,LIFTING DEVICE (ON ROLLS)          | 1.000 EA        |
| LB1404                        | BRAKE CONNECTION LABEL                   | 1.000 EA        |
| LC0005E01                     | CONN.DIA./WARNING LABEL (LC0005/LB1119N) | 1.000 EA        |
| NP1259L                       | ALUM SUPER-E UL CSA-EEV CC NEMA PREMIUM  | 1.000 EA        |
| 37PA1016                      | PKG GRP, PRINT PK1035A06                 | 1.000 EA        |
| MN416A01                      | TAG-INSTAL-MAINT no wire (1200/bx) 11/14 | 1.000 EA        |

**AC Induction Motor Performance Data**

Record # 35063 - Typical performance - not guaranteed values

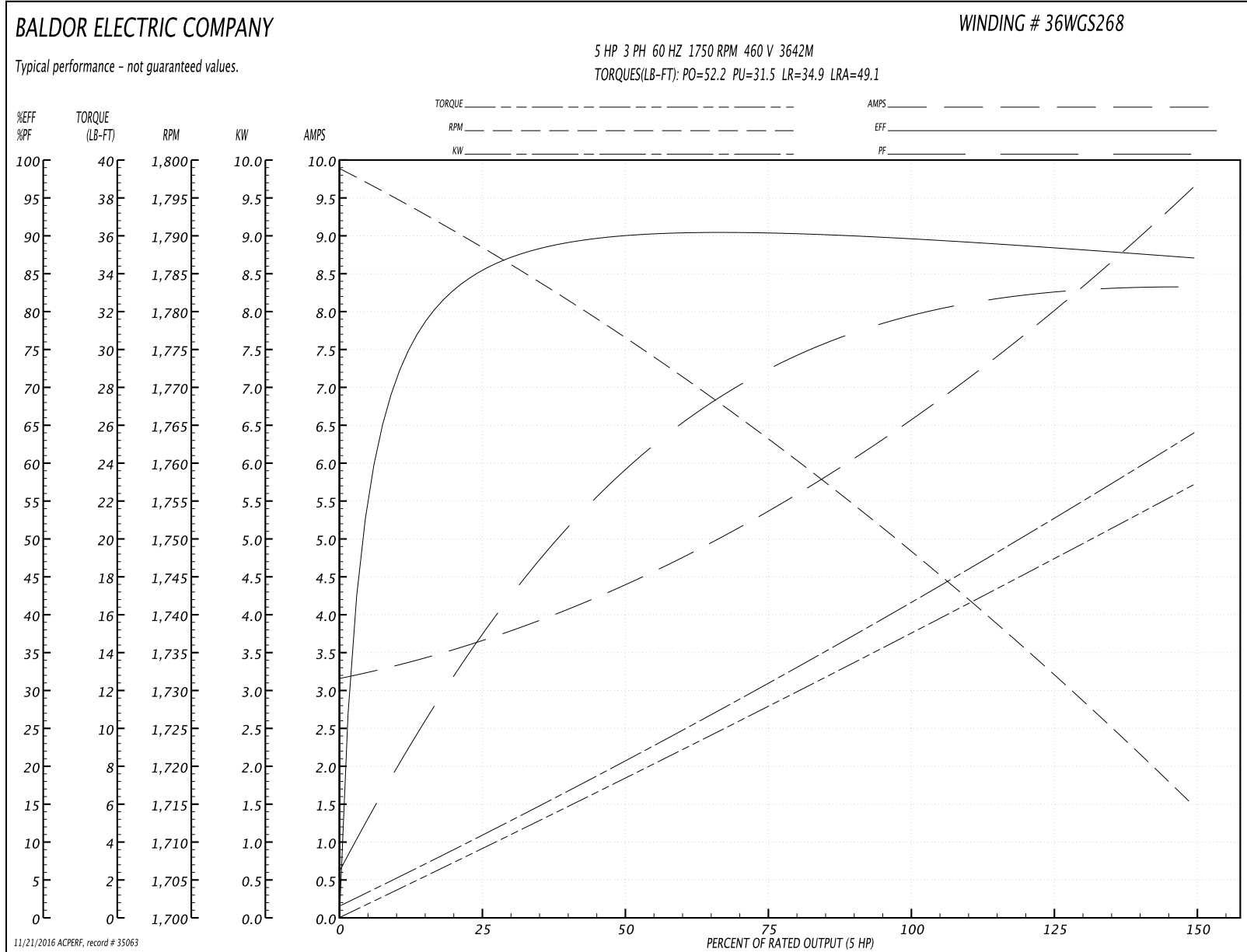
|                               |                    |                        |
|-------------------------------|--------------------|------------------------|
| <b>Winding:</b> 36WGS268-R016 | <b>Type:</b> 3642M | <b>Enclosure:</b> TEFC |
|-------------------------------|--------------------|------------------------|

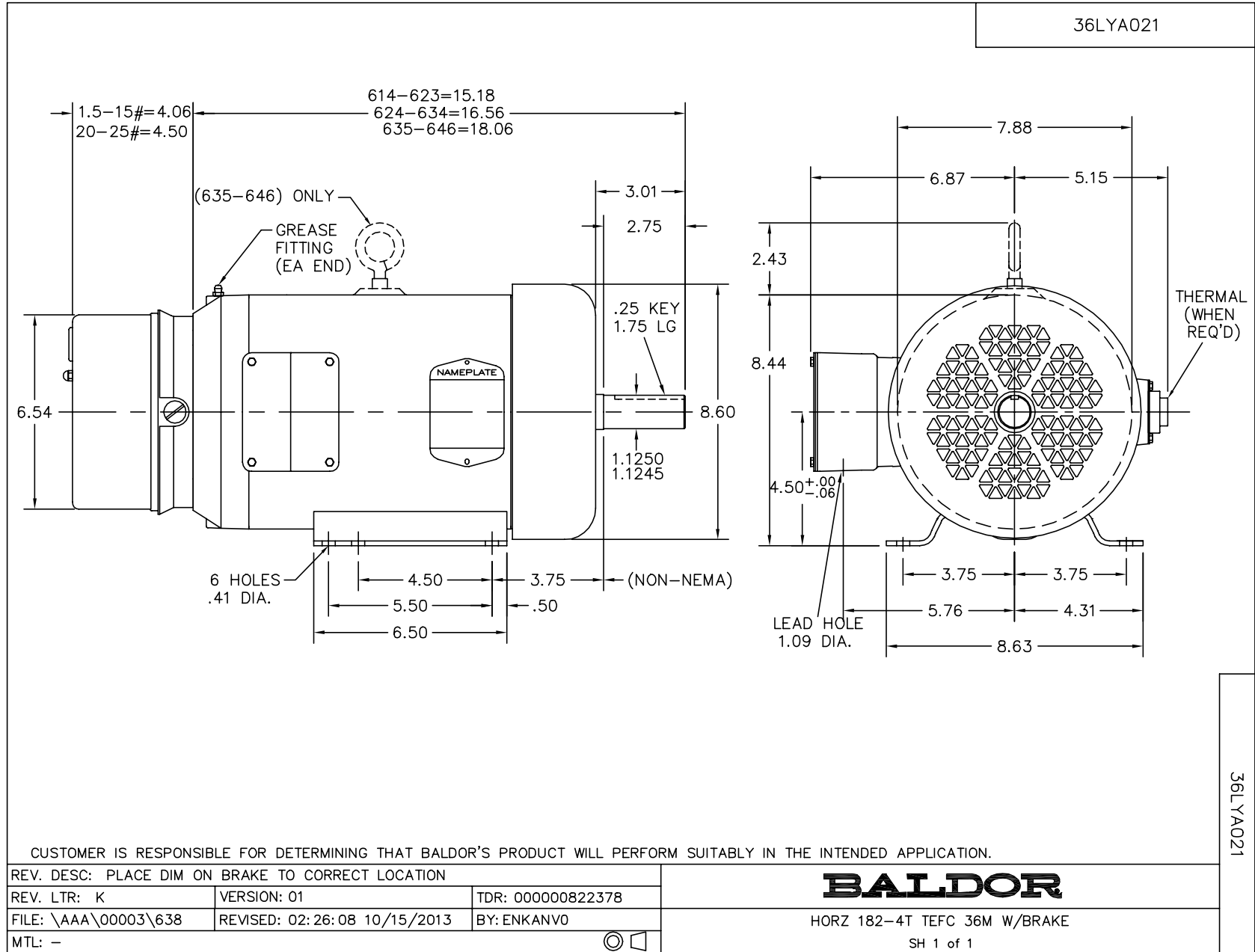
| Nameplate Data        |              |              |    | 460 V, 60 Hz:<br>High Voltage Connection |                          |
|-----------------------|--------------|--------------|----|--|--------------------------|
| Rated Output (HP)     | 5            |              |    | Full Load Torque                         | 14.9 LB-FT               |
| Volts                 | 230/460      |              |    | Start Configuration                      | direct on line           |
| Full Load Amps        | 13.4/6.7     |              |    | Breakdown Torque                         | 52.2 LB-FT               |
| R.P.M.                | 1750         |              |    | Pull-up Torque                           | 31.5 LB-FT               |
| Hz                    | 60           | Phase        | 3  | Locked-rotor Torque                      | 34.9 LB-FT               |
| NEMA Design Code      | B            | KVA Code     | J  | Starting Current                         | 49.1 A                   |
| Service Factor (S.F.) | 1.15         |              |    | No-load Current                          | 3.24 A                   |
| NEMA Nom. Eff.        | 89.5         | Power Factor | 78 | Line-line Res. @ 25°C                    | 2.27 Ω                   |
| Rating - Duty         | 40C AMB-CONT |              |    | Temp. Rise @ Rated Load                  | 77°C                     |
| S.F. Amps             |              |              |    | Temp. Rise @ S.F. Load                   | 93°C                     |
|                       |              |              |    | Locked-rotor Power Factor                | 39.8                     |
|                       |              |              |    | Rotor inertia                            | 0.391 LB-FT <sup>2</sup> |

Load Characteristics 460 V, 60 Hz, 5 HP

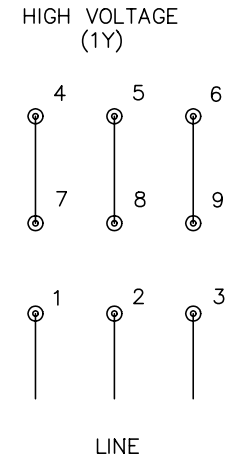
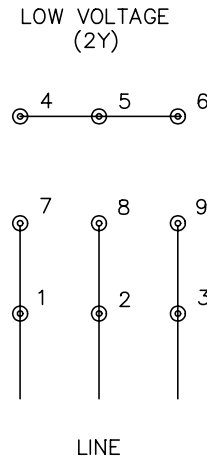
| % of Rated Load | 25   | 50   | 75   | 100  | 125  | 150  | S.F. |
|-----------------|------|------|------|------|------|------|------|
| Power Factor    | 39   | 60   | 72   | 78   | 83   | 83   | 81   |
| Efficiency      | 85   | 89.7 | 90.6 | 89.6 | 88.6 | 87   | 89   |
| Speed           | 1789 | 1776 | 1762 | 1750 | 1733 | 1714 | 1740 |
| Line amperes    | 3.55 | 4.31 | 5.43 | 6.65 | 7.94 | 9.64 | 7.42 |

Performance Graph at 460V, 60Hz, 5.0HP Typical performance - Not guaranteed values





CD0005



- NOTES:
1. INTERCHANGE ANY TWO LINE LEADS TO REVERSE ROTATION.
  2. OPTIONAL THERMOSTATS ARE PROVIDED WHEN SPECIFIED.
  3. ACTUAL NUMBER OF INTERNAL PARALLEL CIRCUITS MAY BE A MULTIPLE OF THOSE SHOWN ABOVE.
  4. LEAD COLORS ARE OPTIONAL. LEADS MUST ALWAYS BE NUMBERED AS SHOWN.

|   |         |                         |              |
|---|---------|-------------------------|--------------|
| REV. DESC: REVISE TO SHOW OPTIONAL COLORS |         |                         |              |
| REV. LTR: E                               | BY: JLP | REVISED: 01/19/99 10:15 | TDR: 0171435 |
| 9000D                                     |         | FILE: AAA00005140       | MDL: -       |
|   |         | MTL: -                  |              |

**BALDOR ELECTRIC Co.**

3PH, DV, 9 LEADS

CD0005