

BALDOR® • RELIANCE

Product Information Packet

JL1313A

1.5HP,3450RPM,1PH,60HZ,56J,3432LC,OPEN

Part Detail							
Revision:	X	Status:	PRD/A	Change #:		Proprietary:	No
Type:	AC	Prod. Type:	3432LC	Elec. Spec:	34WGX598	CD Diagram:	CD0769
Enclosure:	OPEN	Mfg Plant:		Mech. Spec:	34F531	Layout:	34LYF531
Frame:	56J	Mounting:	F1	Poles:	02	Created Date:	
Base:	N	Rotation:	FOS	Insulation:	B	Eff. Date:	11-16-2016
Leads:	4#16 A&J,1#18 B PH,1#14 #1TH					Replaced By:	
Literature:		Elec. Diagram:					

Nameplate NP1257L	
CAT.NO.	JL1313A
SPEC.	34F531X598
HP	1.5
VOLTS	115/230
AMP	13/6.5
RPM	3450
FRAME	56J
SER.F.	1.30
NEMA-NOM-EFF	78.5
RATING	40C AMB-CONT
CC	
DE	6203
ENCL	OPEN
	SFA 17/8.5
	CODE H
	PF 95
	ODE 6203
	SN
	HZ 60
	DES -
	CL B
	PH 1
	USABLE AT 208V

Parts List		
Part Number	Description	Quantity
SA043979	SA 34F531X598	1.000 EA
RA039436	RA 34F531X598	1.000 EA
OC3050C09	CYL OIL CAP 50MFD/240V	1.000 EA
EC1540A06SP	ELEC CAP, 540-648 MFD, 125V, 2.06D X 4.	1.000 EA
WD4100A01	DP-875 HEYCO PLUG OR 62MP0875 MICRO PLAS	1.000 EA
34EP3202A02	FR ENDPLATE, MACH	1.000 EA
11XT0832G06	8-32 X 3/8 TY 23 TAPPING	1.000 EA
51XW0832A07	8-32 X .44, TAPTITE II, HEX WSHR SLTD SE	3.000 EA
NS2501A02	INSULATOR, CAPACITOR BOX	1.000 EA
34CB3801	CAPACITOR BOX, DIE CAST	1.000 EA
51XB1214A08	12-14 X 1/2HX WS SL SR TYBX	2.000 EA
HW5100A03SP	WAVY WASHER (W1543-017)	1.000 EA
34EP3401A01SP	PU ENDPLATE, MACH	1.000 EA
34AD2000	BAFFLE PLATE, STAMPED	1.000 EA
51XT0632A06	6-32X3/8 TY23 HXWS SLDSR	4.000 EA
51XN1032A20	10-32 X 1 1/4 HX WS SL SR	2.000 EA
34FH4500A02P	DRIPCOVER, MODEL 34	1.000 EA
51XW0832A07	8-32 X .44, TAPTITE II, HEX WSHR SLTD SE	2.000 EA
34CB4501SP	TERMINAL BOX LID, STAMPED X (PLATED)	1.000 EA
51XW0832A07	8-32 X .44, TAPTITE II, HEX WSHR SLTD SE	2.000 EA
RM1010A01	35-968-1 VINYL CLS	1.000 EA
MG1000G27	MED CHARCOAL METALLIC GREY 400-0096	0.014 GA
LB1009N	LABEL,ROTATION DIRECTION (ON ROLLS)	1.000 EA
10XF0440S02	04-40 X 1/8 TYPE F HEX HD STAINLESS STIC	2.000 EA

Parts List (continued)		
Part Number	Description	Quantity
SP5068A03	34LC TERM PANEL STAT SWITCH #E-6" AND #O	1.000 EA
HA3100A21	THRUBOLT 10-32 X 9.937	4.000 EA
MN416A01	TAG-INSTAL-MAINT no wire (1200/bx) 11/14	1.000 EA
LC0546	CONNECTION LABEL	1.000 EA
LB1118	LABEL,WARNING (ROLL LABEL)	1.000 EA
NP1257L	ALUM UL CSA CC THERMAL REV MTG	1.000 EA
36PA1000	PKG GRP, PRINT PK1016A06	1.000 EA
PK3083T	STYROFOAM PACKING CRADLE W/TAPE	1.000 EA

AC Induction Motor Performance Data
Record # 7475 - Typical performance - not guaranteed values

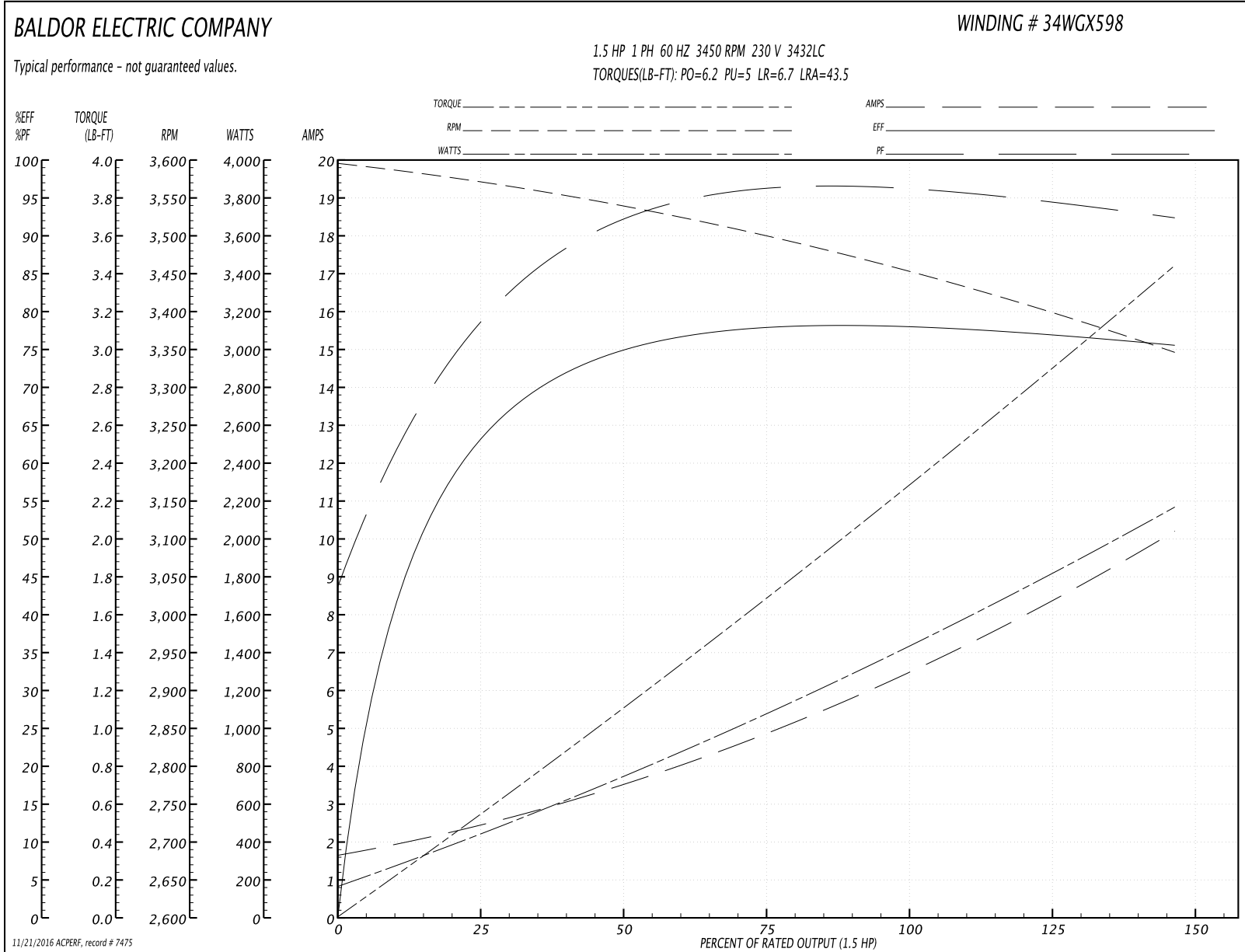
Winding: 34WGX598-R001	Type: 3432LC	Enclosure: OPEN
-------------------------------	---------------------	------------------------

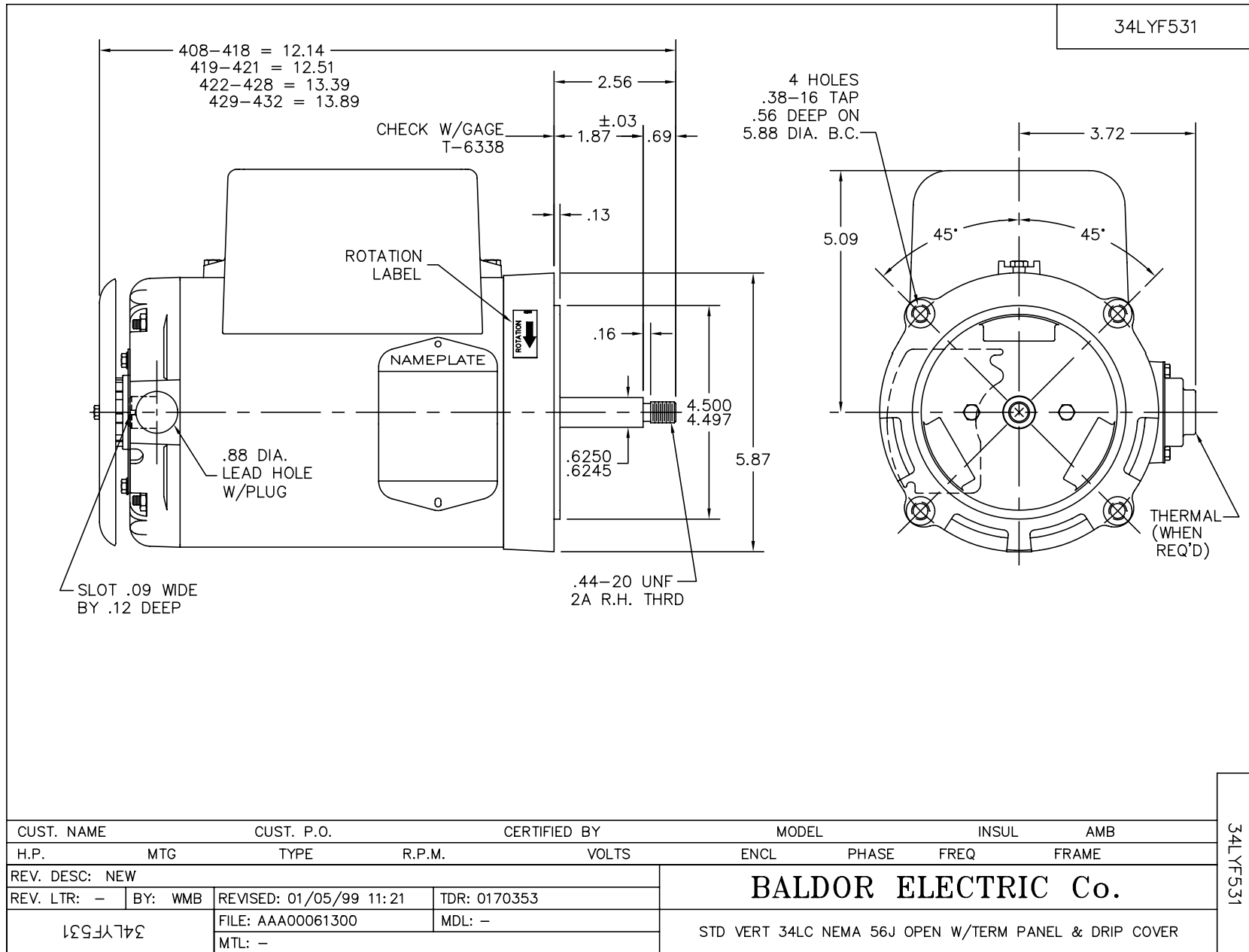
Nameplate Data				230 V, 60 Hz: High Voltage Connection	
Rated Output (HP)	1.5			Full Load Torque	2.3 LB-FT
Volts	115/230			Start Configuration	direct on line
Full Load Amps	13/6.5			Breakdown Torque	6.2 LB-FT
R.P.M.	3450			Pull-up Torque	5 LB-FT
Hz	60	Phase	1	Locked-rotor Torque	6.7 LB-FT
NEMA Design Code	-	KVA Code	H	Starting Current	43.5 A
Service Factor (S.F.)	1.3			No-load Current	1.65 A
NEMA Nom. Eff.	78.5	Power Factor	95	Line-line Res. @ 25°C	1.58 Ω A Ph 1.44 Ω B Ph
Rating - Duty	40C AMB-CONT			Temp. Rise @ Rated Load	38°C
S.F. Amps	17/8.5			Temp. Rise @ S.F. Load	53°C

Load Characteristics 230 V, 60 Hz, 1.5 HP

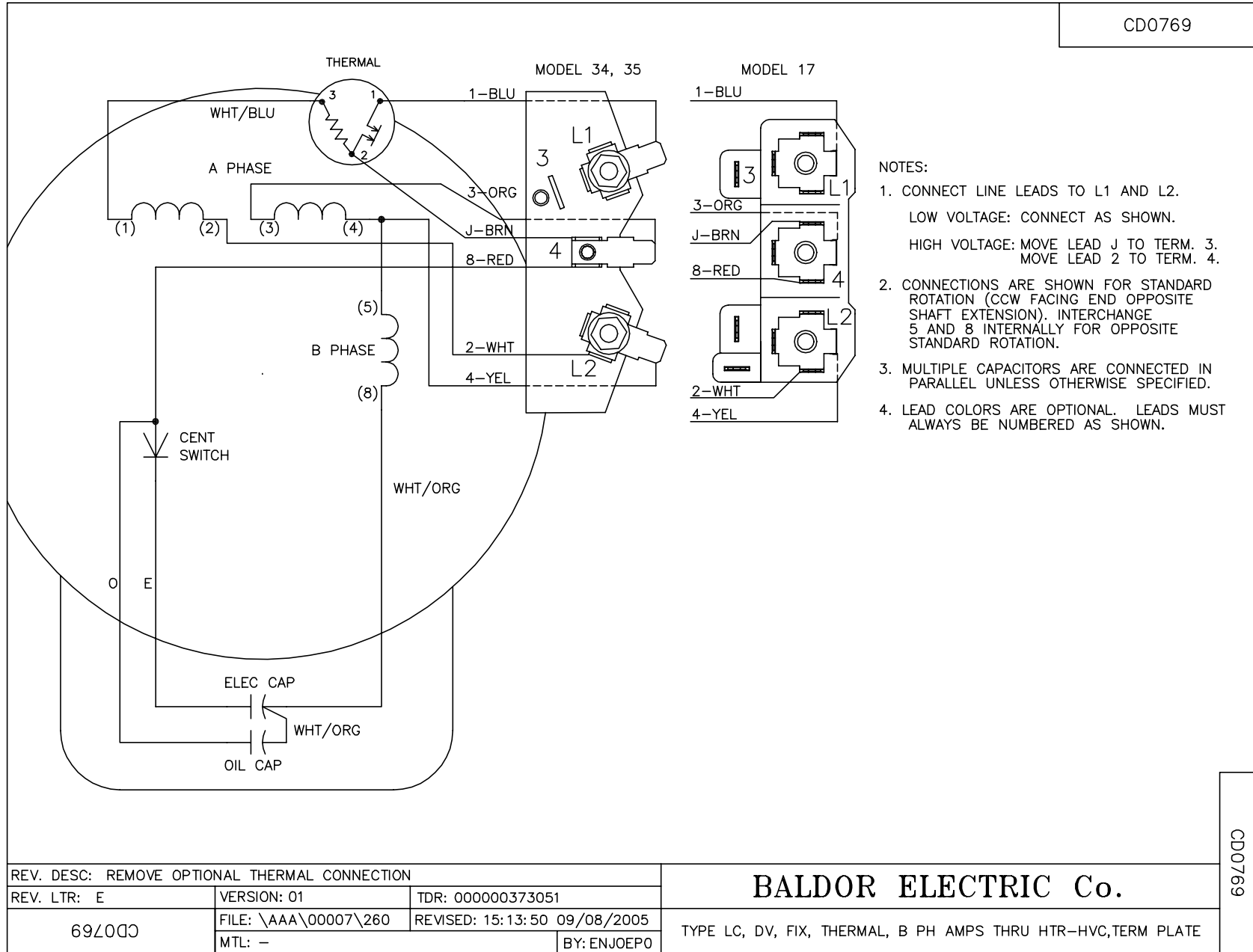
% of Rated Load	25	50	75	100	125	150	S.F.
Power Factor	81	90	93	95	95	95	95
Efficiency	60.5	76.2	77.7	78.5	77.2	75.3	76.8
Speed	3566	3534	3498	3455	3403	3343	3391
Line amperes	2.45	3.65	5	6.5	8.25	10.25	8.65

Performance Graph at 230V, 60Hz, 1.5HP Typical performance - Not guaranteed values





CD0769



CD0769

REV. DESC: REMOVE OPTIONAL THERMAL CONNECTION		
REV. LTR: E	VERSION: 01	TDR: 000000373051
69Z000	FILE: \AAA\00007\260	REVISED: 15:13:50 09/08/2005
	MTL: -	BY: ENJOEPO

BALDOR ELECTRIC Co.

TYPE LC, DV, FIX, THERMAL, B PH AMPS THRU HTR-HVC, TERM PLATE