

# **BALDOR**® • ***RELIANCE***

## **Product Information Packet**

# **UCME1014**

**10-14 AIR OVERHP,3450RPM,3PH,60HZ,215Z,3**

Part Detail							
Revision:	E	Status:	PRD/A	Change #:		Proprietary:	No
Type:	AC	Prod. Type:	3733M	Elec. Spec:	37WGY842	CD Diagram:	CD0005
Enclosure:	TEAO	Mfg Plant:		Mech. Spec:	37N422	Layout:	37LYN422
Frame:	215Z	Mounting:	F1	Poles:	02	Created Date:	03-07-2014
Base:	RG	Rotation:	R	Insulation:	F	Eff. Date:	05-17-2016
Leads:	9#14 SEE NOTES Y					Replaced By:	
Literature:		Elec. Diagram:					

Nameplate NP1279L											
CAT.NO.	UCME1014										
SPEC.	37N422Y842G1										
HP	10-14 AIR OVER										
VOLTS	208-230/460										
AMP	35-33/16.5										
RPM	3450										
FRAME	215Z				HZ	60			PH	3	
SER.F.	1.00				CODE	H		DES	B	CL	F
NEMA-NOM-EFF					PF						
RATING	40C AMB-CONT										
CC								USABLE AT 208V	35		
DE	6307				ODE	6206					
ENCL	TEAO				SN						

Nameplate NP3114L										
CAT.NO.	UCME1014									
SPEC.	37N422Y842G1									
HP	10-14 AIR OVER									
VOLTS	208-230/460									
AMP	35-33/16.5									
RPM	3450									
FRAME	215Z			HZ	60			PH	3	
SER.F.	1.00			CODE	H		DES	B	CL	F
NEMA-NOM-EFF				PF						
RATING	40C AMB-CONT									
CC							USABLE AT 208V	35		
DE	6307			ODE	6206					
ENCL	TEAO			SN						

Parts List		
Part Number	Description	Quantity
SA277563	SA 37N422Y842G1	1.000 EA
RA264113	RA 37N422Y842G1	1.000 EA
HW3200A01	3/8-16X3/4 I-BLT WELDED F/S	1.000 EA
HA6011A01	ADAPTOR, MACH	1.000 EA
36GS5001	GASKET CONDUIT ADAPTOR	1.000 EA
51XF2520A10	SCREW, HEX SER SLT HD, ZN, 1/4-20 X .62	2.000 EA
51XT0832G06	8-32 X 7/16 TY23 HXWS SLDSR GR	1.000 EA
HW3001B01	BRASS CUP WASHER, FOR #8 SCREW	1.000 EA
37EP3101C08	FR ENDPLATE, MACH	1.000 EA
HW5100A06	W2420-025 WVY WSHR (WB)	1.000 EA
37PE3100A92	PUEP ASSEMBLY FOR ROUTING PURPOSES	1.000 EA
HW4600B51	SEAL 1.375 X 2.125 X 0.313 SINGLE LIP DB	1.000 EA
10XN2520A28	1/4-20X 1 3/4 HEX HD	4.000 EA
HW1001A25	LOCKWASHER 1/4, ZINC PLT .493 OD, .255 I	4.000 EA
XY3118A12	5/16-18 HEX NUT DIRECTIONAL SERRATION	4.000 EA
HW4600B31SP	V-RING SLINGER 1.438 X 1.758 X .24 VITON	1.000 EA
HW2501E18	KEY, 1/4 SQ X 2.000	1.000 EA
HA7000A02	KEY RETAINER RING, 1 1/8 DIA, 1 3/8 DIA	1.000 EA
85XU0407S04	4X1/4 U DRIVE PIN STAINLESS	2.000 EA
LB1115N	LABEL,LIFTING DEVICE (ON ROLLS)	1.000 EA
LD5000A24	LEAD ASSY, ML1400DF10 W/#10 RING 12"	1.000 EA
MJ1000A02	GREASE, POLYREX EM EXXON (USe 4824-15A)	0.050 LB
MG1025C02	WILKOFASST SG, 787.105, TAN	0.028 GA
HA3104A14	THRUBOLT- 5/16-18 X12.125(OHIO)	4.000 EA

<b>Parts List (continued)</b>		
<b>Part Number</b>	<b>Description</b>	<b>Quantity</b>
LB1119N	WARNING LABEL	1.000 EA
LC0145B01	CONNECTION LABEL	1.000 EA
NP1279L	ALUM FARM DUTY UL CSA CC	1.000 EA
NP3114L	ALUM FARM DUTY NO LOGO'S CC	1.000 EA
36PA1001	PKG GRP, PRINT PK1017A06	1.000 EA
MN416A01	TAG-INSTAL-MAINT no wire (1200/bx) 11/14	1.000 EA

<b>Accessories</b>		
<b>Part Number</b>	<b>Description</b>	<b>Multiplier</b>
37-3301	C FACE KIT	P1

**AC Induction Motor Performance Data**

Record # 12585 - Typical performance - not guaranteed values

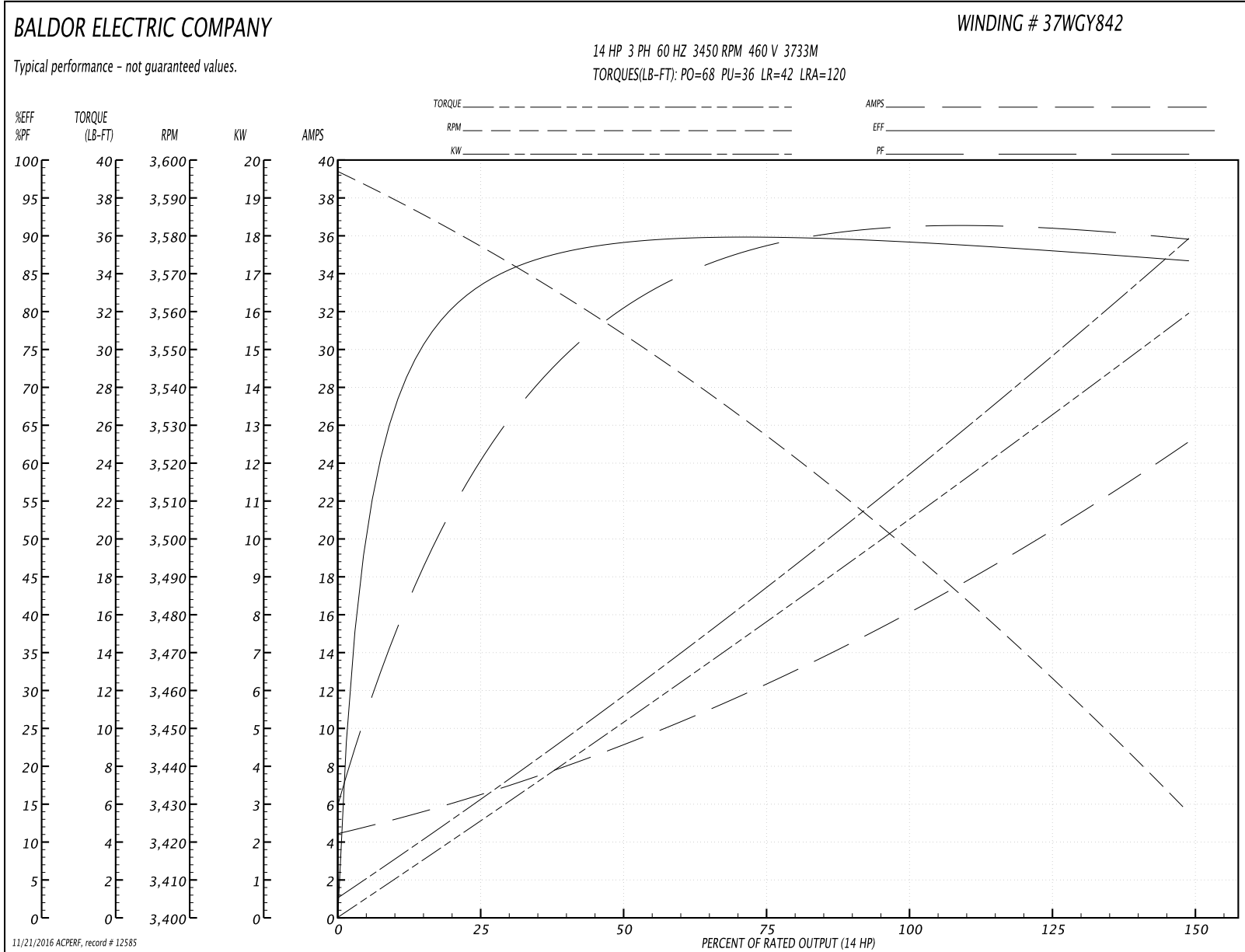
<b>Winding:</b> 37WGY842-R001	<b>Type:</b> 3733M	<b>Enclosure:</b> TEAO
-------------------------------	--------------------	------------------------

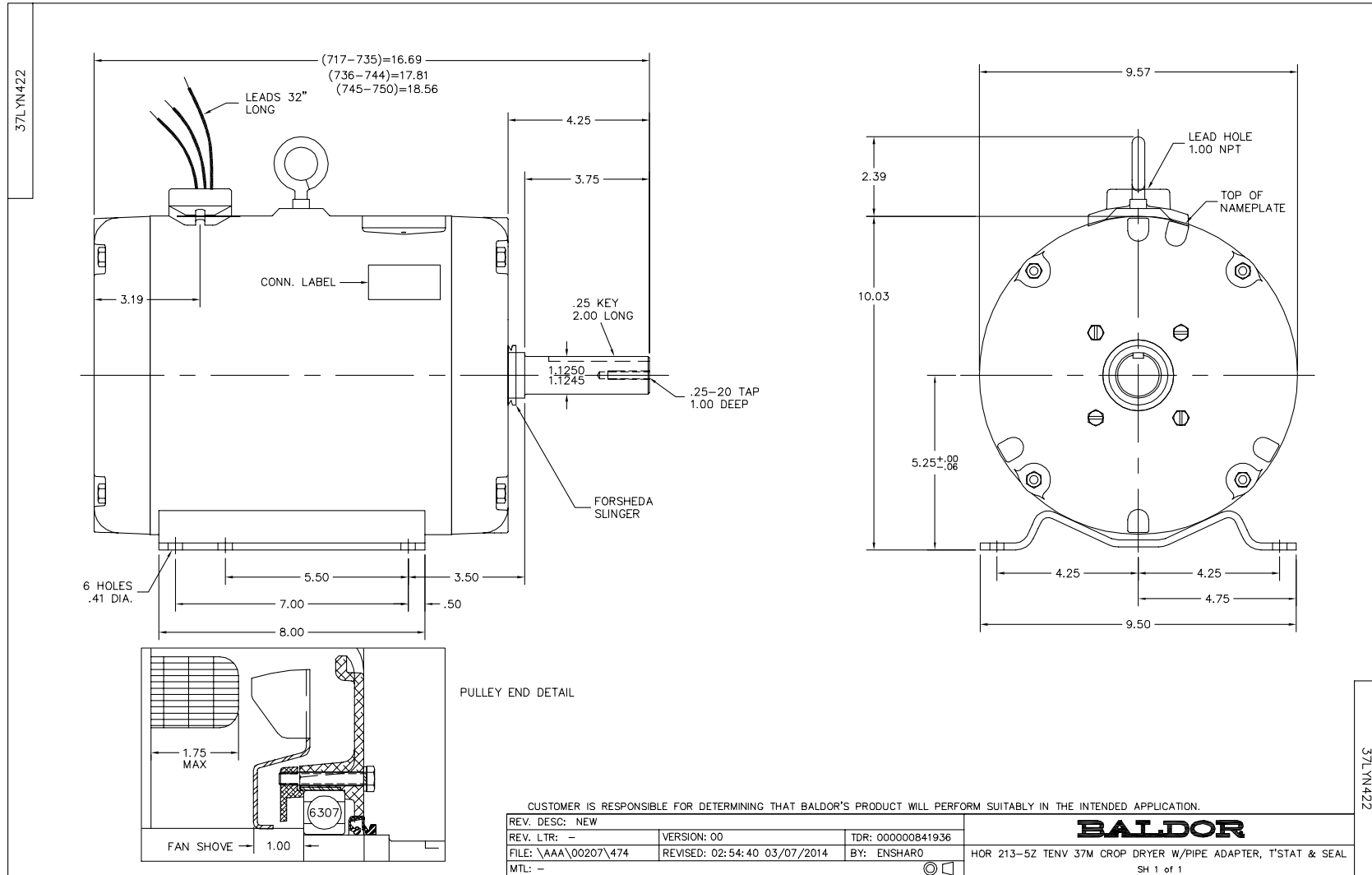
Nameplate Data				460 V, 60 Hz: High Voltage Connection	
Rated Output (HP)	10-14 AIR OVER			Full Load Torque	21.3 LB-FT
Volts	208-230/460			Start Configuration	direct on line
Full Load Amps	35-33/16.5			Breakdown Torque	68 LB-FT
R.P.M.	3450			Pull-up Torque	36 LB-FT
Hz	60	Phase	3	Locked-rotor Torque	42 LB-FT
NEMA Design Code	B	KVA Code	H	Starting Current	120 A
Service Factor (S.F.)	1			No-load Current	4.7 A
NEMA Nom. Eff.	0	Power Factor	0	Line-line Res. @ 25°C	0.818 Ω
Rating - Duty	40C AMB-CONT			Temp. Rise @ Rated Load	

Load Characteristics 460 V, 60 Hz, 14 HP

% of Rated Load	25	50	75	100	125	150
Power Factor	66	83	88	90	91	90
Efficiency	82.9	88.6	89.8	89.5	88.2	86.5
Speed	3574	3551	3526	3497	3464	3426
Line amperes	6.2	9.2	12.7	16.5	20.6	25

Performance Graph at 460V, 60Hz, 14.0HP Typical performance - Not guaranteed values

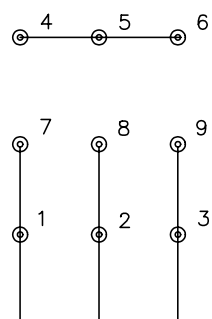




CD0005

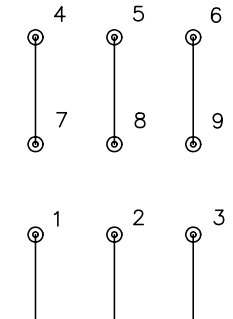


LOW VOLTAGE  
(2Y)



LINE

HIGH VOLTAGE  
(1Y)



LINE

NOTES:

1. INTERCHANGE ANY TWO LINE LEADS TO REVERSE ROTATION.
2. OPTIONAL THERMOSTATS ARE PROVIDED WHEN SPECIFIED.
3. ACTUAL NUMBER OF INTERNAL PARALLEL CIRCUITS MAY BE A MULTIPLE OF THOSE SHOWN ABOVE.
4. LEAD COLORS ARE OPTIONAL. LEADS MUST ALWAYS BE NUMBERED AS SHOWN.

REV. DESC: REVISE TO SHOW OPTIONAL COLORS			
REV. LTR: E	BY: JLP	REVISED: 01/19/99 10:15	TDR: 0171435
900000		FILE: AAA00005140	MDL: -
		MTL: -	

**BALDOR ELECTRIC Co.**

3PH, DV, 9 LEADS

CD0005