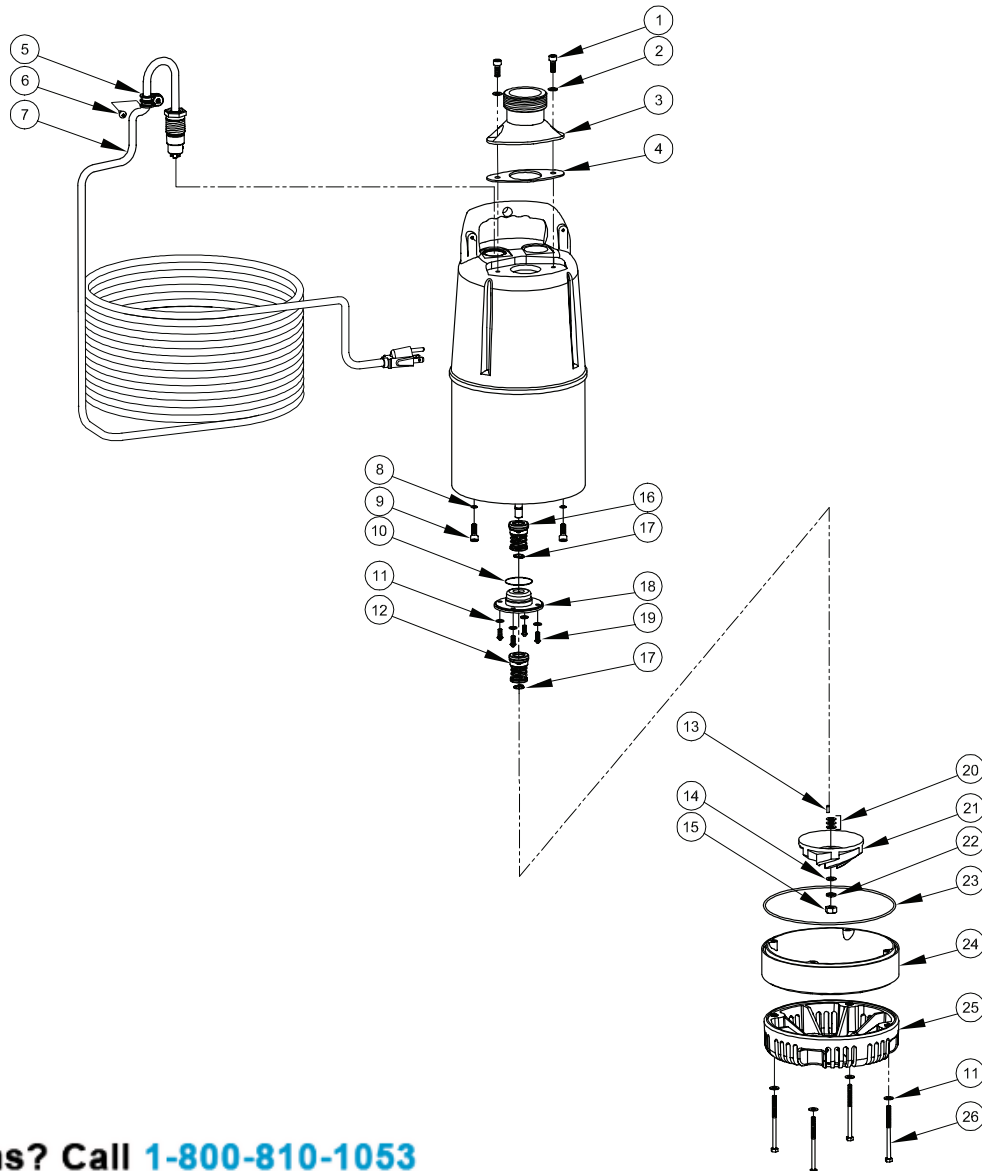


BARNES • PROSSER • CROWN SERVICE PARTS

MODEL	PART NO.		
70	115070		
71	115071		
125	115125		
126	115126		

Manual: 115150



Questions? Call **1-800-810-1053**

Continued →

Series: 70, 71, 125, 126

Portable Submersible Pump

.7 & 1.25 HP, 3450RPM, 60Hz.

BARNES®

www.cranepumps.com

BARNES • PROSSER • CROWN SERVICE PARTS

PARTS LIST

ITEM	QTY	PART NO.	DESCRIPTION
1	2	115084	SkHd Screw, M6 x 15, SS
2	2	115085	Flatwasher, 6mm, SS
3	1	115083	Discharge Outlet, 2" NPT
4	1	115086	Discharge Gasket
5	1	115081	Cable Clamp
6	1	115082	Self-Tapping Screw M4.8 x 16, SS
7	1	115078 115079	Cable, w/Plug 120 Volt Cable w/o Plug 240 Volt
8	2	115131	O-ring 6mm Dia. x 1.9mm
9	2	115130	SkHd Screw M6 x 10, SS
10	1	115124	O-ring 35mm Dia. x 3.1mm
11	8	115138	Flatwasher 5mm, SS
12	1	130825	Mechanical Seal
13	1	115140	Impeller Key, 3mm x 10mm, SS
14	1	115142	Flatwasher 8mm, SS
15	1	115141	Hex Nut, 8mm, SS
16	1	068988	Mechanical Seal
17	2	115106	Snap Ring
18	1		Seal Plate
19	4	115135	RdHd Screw, M5 x 10, SS
20	3	115139	Impeller Shim
21	1	115121 115122	0.7 HP (70 & 71 Series) Impeller 1.25 HP (125 & 126 Series) Impeller
22	1	115143	Lockwasher, 8mm, SS
23	1	115103	O-ring, 170mm Dia. x 2.5mm
24	1	115137	Suction Case
25	1	115145	Suction Strainer
26	4	115144	Screw, M5 x 72, SS
REPAIR PARTS KITS			
		115073	120 Volt Cord Kit - Items 5, 6 & 7
		115074	240 Volt Cord Kit - Items 5, 6 & 7
		115075	Discharge Nozzle Kit - Items 1, 2, 3 & 4
		115077	Strainer Kit - Items 11, 25 & 26
		115072	0.7 HP Impeller Kit - Items 13, 14, 15, 20, 21, 22 & 24
		115127	1.25 HP Impeller Kit - Items 13, 14, 15, 20, 21, 22 & 24
		115076	Mechanical Seal Kit - Items 8, 9, 10, 11, 12, 16, 17 & 19

Repair parts are available in **REPAIR PARTS KITS ONLY**. Each kit contains an instruction sheet with procedures and illustrations to assist in replacement of the necessary parts



Questions? Call **1-800-810-1053**

End

SECTION 1A
PAGE 24
DATE 1/13

CRANE[®]

A Crane Co. Company

PUMPS & SYSTEMS

USA: (937) 778-8947 • Canada: (905) 457-6223 • International: (937) 615-3598