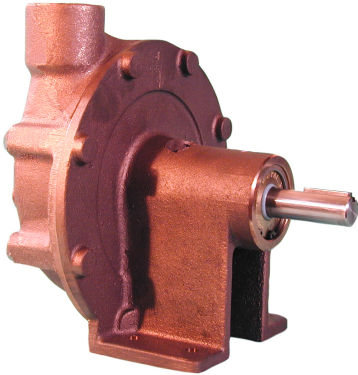


BRONZE PEDESTAL CENTRIFUGAL PUMP

CENTRIFUGAL PUMPS SERIES 119

PERFORMANCE



FEATURES

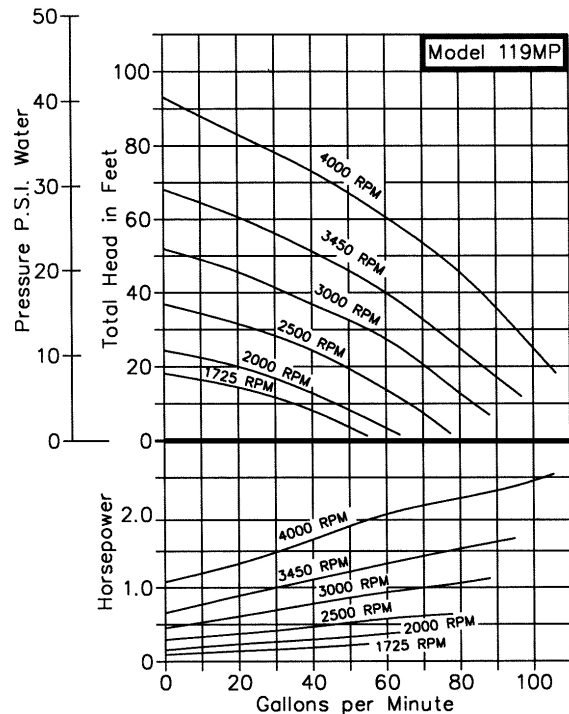
- Rugged Bronze Construction
- Quiet Operation
- O-Ring housing seal eliminates gasket problems
- Mechanical Seal Nitrile- standard; fluoroelastomer (S10) optional
- Designed for Pulley Drive
- Stainless Steel Shaft is Standard
- Nickel Alloy Shaft (119MP-01) optional
- Independent Sealed Ball bearings
- No Bearing Lubrication required- the ball bearings are grease sealed for life requiring no maintenance
- Handles contaminated liquids
- Discharge port orientation flexibility - 8 positions

DRIVE

The pedestal centrifugal pumps can be direct driven by electric motors at either 3450 R.P.M. or 1725 R.P.M. Performance for both speeds is listed in the capacity chart above. The 119MP pedestal centrifugal pumps can be pulley driven at any desired intermediate speed.

LIQUIDS AND TEMPERATURE

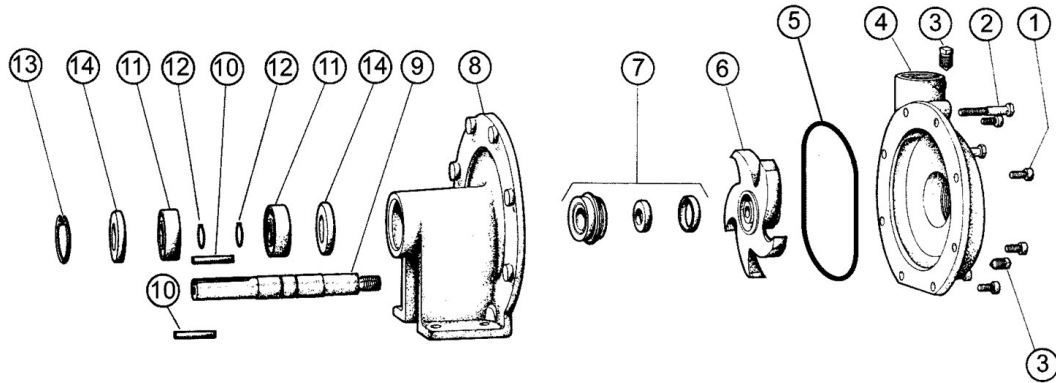
Bronze pumps are suitable for most common liquids in the PH-range from 4 to 11. The temperature limit for bronze pumps is 212o F, higher temperatures are possible with fluoroelastomer seals. If in doubt, consult factory. Because centrifugal pumps are more efficient at higher shaft speeds, pumping of viscous or thick liquids is difficult. It is possible to lose as much as 40% pump performance when attempting to pump liquids of viscosity equal to S.A.E. 30 oil at room temperature. S.A.E. 30 oil at room temperature has a viscosity of 2000 Saybolt Seconds Universal. More viscous liquids are not recommended for centrifugal pumps.



SUCTION LIFT

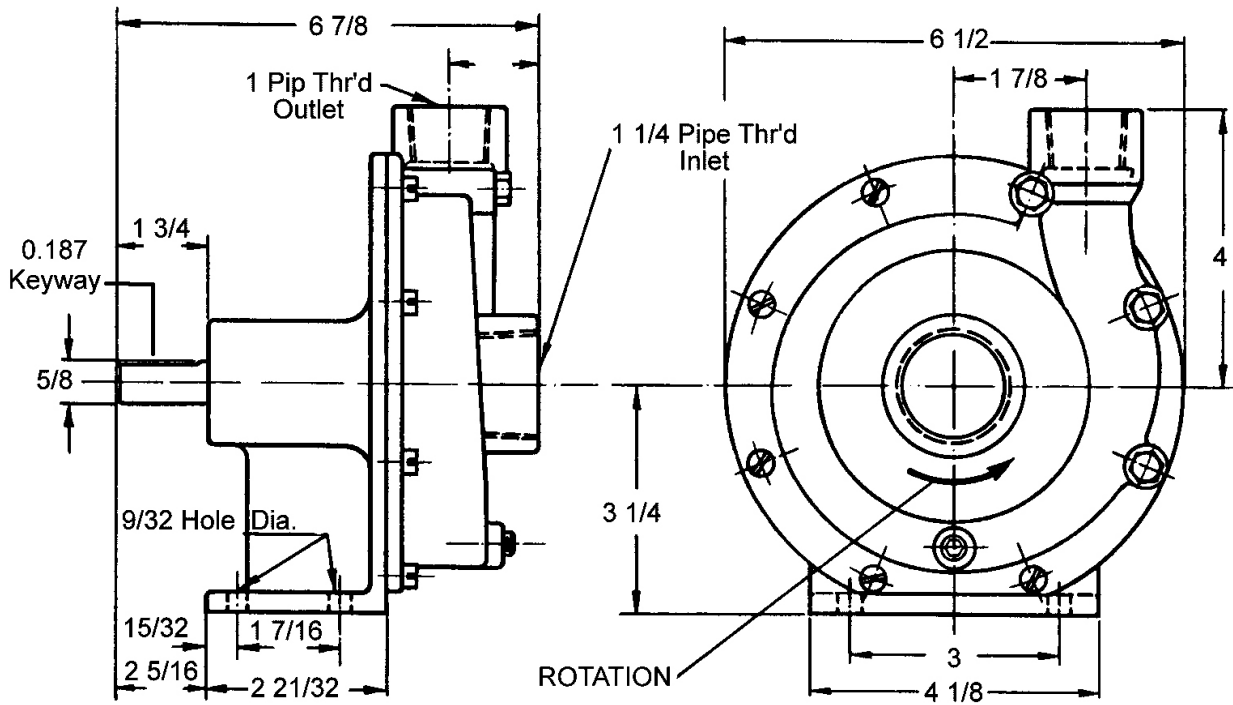
This centrifugal pump is not self priming. Normally these pumps must be installed below the liquid level so that the liquid flows to the pump by gravity. However, if a foot valve is used at the beginning of the suction line and all air is bled from the suction line and pump by careful manual priming, these pumps will lift liquid on the suction side up to 15 ft. Such a system is only as positive as the ability of the foot valve to seal and keep the suction line and pump full of liquid. If the foot valve should leak, the pump will not prime.

EXPLODED VIEW AND PARTS LIST



| Pump Number | 1 | 2 | 3 | 4 | 5* | 6* | 7* | 8 | 9* | 10 | 11* | 12* | 13 | 14* | Repair Kit |
|--------------------------------|--------|--------|--------|--------|----------|----------|---------------|----------|--------|--------|--------------|-----------|-----------|----------|------------|
| | Screw | Screw | Plug | Body | O-ring | Impeller | Seal Assembly | Pedestal | Shaft | Key | Ball Bearing | Ret. Ring | Ret. Ring | Lip Seal | |
| | 5 Reqd | 3 Reqd | 2 Reqd | 1 Reqd | 1 Reqd | 1 Reqd | 1 Reqd | 1 Reqd | 1 Reqd | 1 Reqd | 2 Reqd | 2 Reqd | 1 Reqd | 2 Reqd | |
| 119MP | 5504 | 5633 | 5395 | 5266 | 9797-157 | 6179 | 32155 | 6887 | 7037 | 6567 | 5928 | 5926 | 5925 | 6609 | 10901 |
| 119MP-01 | 5504 | 5633 | 5395 | 5266 | 9797-157 | 6179 | 32155 | 6887 | 6890 | 6567 | 5928 | 5926 | 5925 | 6609 | 10917 |
| 119MPS10 | 5504 | 5633 | 5395 | 5266 | 9797-157 | 6179 | 32210 | 6887 | 7037 | 6567 | 5928 | 5926 | 5925 | 6609 | 12318 |
| *Items included in Repair Kits | | | | | | | | | | | | | | | |

DIMENSIONS



SHAFT SEAL OPTIONS

Mechanical Shaft Seals have Nitrile rubber components (212oF max) as standard. For temperatures up to 400oF, a fluoroelastomer seal must be selected by adding code S10 to the pump number.