

BRONZE CLOSE COUPLED CENTRIFUGAL PUMP

CENTRIFUGAL PUMPS SERIES 170M

PERFORMANCE



FEATURES

- Rugged Corrosion Resistant Bronze Construction
- Compact & Light
- Nitrile Lip Seal STD; Optional fluoroelastomer Lip
- TEFC Motors With Corrosion Resistant Passivated 316 SS Shafts
- 1/10 HP Permanent Magnet 12V, 24V, 32V DC Motors
- Rubber Base Grommets For Vibration Dampening
- Insulated Leads
- 1/13 HP Permanent Magnet 12V DC Motor (A95)

Ideal for:

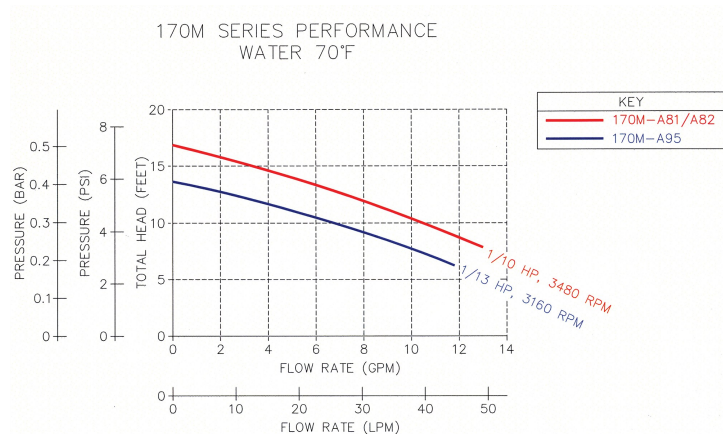
- Marine Air Conditioning
- Engine Block Temperature Control
- Radiator & Heat Exchanger Circulation
- Baitwell Circulation

DRIVE

One of the outstanding features of this pump and motor unit is its compact D.C. motor size. Although small, adequate motor power is available. Motors are available in 12, 24 and 32 VDC.

LIQUIDS AND TEMPERATURE

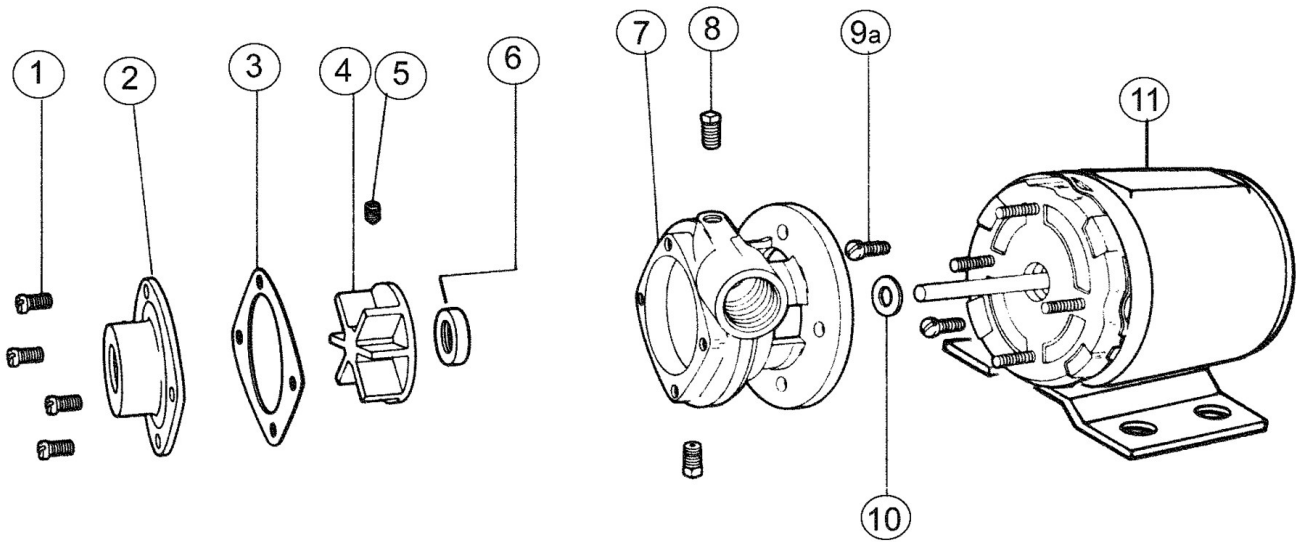
This pump is more than capable of pumping water, water solutions, and a wide range of commercial chemicals. Viscous liquids with a maximum viscosity of 2000 Saybolt Seconds Universal can be pumped. However, when pumping viscous liquids (as compared with water) a reduction in flow and pressure occurs and the required horsepower increases. Liquids heavier than water require additional horsepower in direct proportion to the increase in specific gravity. Questions about the chemical compatibility of special liquids should be referred to the factory.



SUCTION LIFT

These pumps are not self priming. They must be installed below the liquid level so that the liquid flows to the pump by gravity (flooded suction). However, if a foot valve is used at the beginning of the suction line, and all air is bled from the pump by manual priming, the pump will lift on the suction side up to 15 feet. Such a system relies entirely on the non-leaking foot valve for starting capability.

EXPLODED VIEW AND PARTS LIST



Pump No.	1	2	3 ¹	4 ¹	5	6 ¹	7	8	9	10	11	Repair Kit ¹
	Screw	Cover	Gasket	Impeller	Set Screw	Lip Seal	Body	Plug	Screw	Slinger	Motor	
	4 Reqd	1 Reqd	1 Reqd	1 Reqd	1 Reqd	1 Reqd	1 Reqd	2 Reqd	2 Reqd	1 Reqd	1 Reqd	
170M	5385	7375	7020	7272	6079	6647	7374	6052	7424	6651	---	10911

¹ Repair Kit contains items 3, 4, & 6.

Pump No.	Electric Motor	Part #
170M-A81	1/10 HP, 3700 RPM, 12v, Single Phase, TEFC	9950
170M-A82	1/10 HP, 3700 RPM, 24v, Single Phase, TEFC	9949
170M-A85	1/8 HP, 3700 RPM, 12v DC, TEFC	8101
170M-A87	1/8 HP, 3700 RPM, 32v DC, TEFC	8103
170M-A95	1/10 HP, 3100 RPM, 12v DC, TEFC	9985

170 M A81

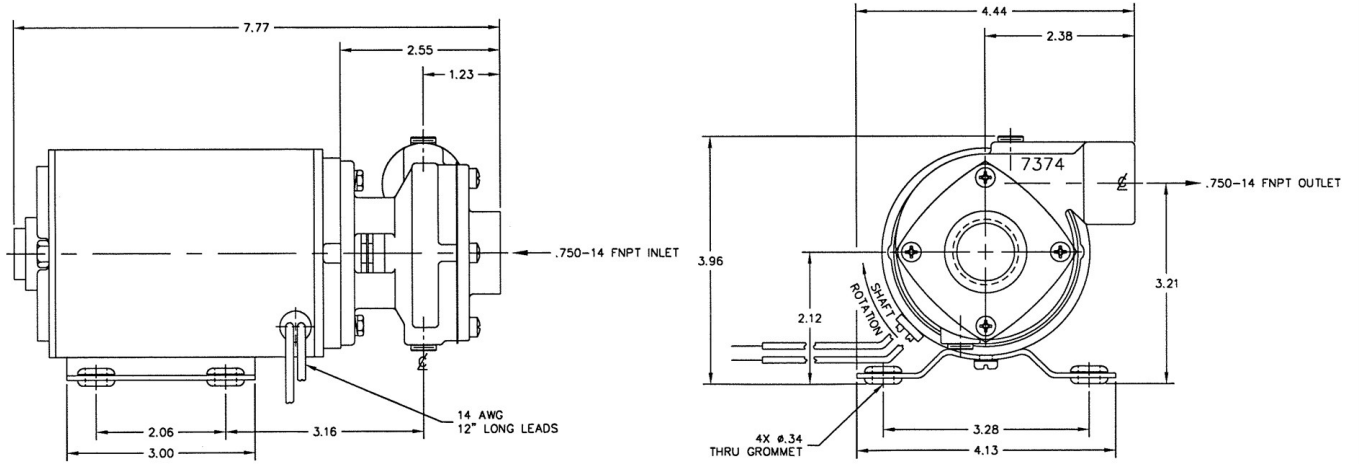
Basic Pump No. first 3 digits

Motor Code No. last three digits

The letter M stands for Marine Use

DIMENSIONS

DIMENSIONS
170M's WITH A81 OR A82 MOTOR



DIMENSIONS
170M's WITH A95 MOTOR

