

BALDOR® • ***RELIANCE***

Product Information Packet

CEDM3556

1HP,1155RPM,3PH,60HZ,56C,3526M,TEFC,F1,N

| Part Detail | | | | | | | |
|-------------|------|----------------|-------|-------------|----------|---------------|------------|
| Revision: | D | Status: | PRD/A | Change #: | | Proprietary: | No |
| Type: | AC | Prod. Type: | 3526M | Elec. Spec: | 35WGM497 | CD Diagram: | CD0005 |
| Enclosure: | TEFC | Mfg Plant: | | Mech. Spec: | 35E4315 | Layout: | 35LYE4315 |
| Frame: | 56C | Mounting: | F1 | Poles: | 06 | Created Date: | 04-12-2016 |
| Base: | RG | Rotation: | R | Insulation: | F | Eff. Date: | 10-20-2016 |
| Leads: | 9#18 | | | | | Replaced By: | |
| Literature: | | Elec. Diagram: | | | | | |

| Nameplate NP3504E | | | | | | | | | | |
|-------------------|---------------|--|--|----------|---|------------|-------|------|----------|----|
| CAT NO | CEDM3556 | | | | | | | | | |
| SPEC. | 35E4315M497G1 | | | | | | | ENCL | TEFC | |
| FRAME | 56C | | | HP | | 1 | | | | |
| VOLTS | 230/460 | | | | | | | | | |
| FLA | 3.6/1.8 | | | | | I.P. | 56 | | | |
| RPM | 1155 | | | RPM MAX | | 1800 | | | | |
| HZ | 60 | | | PH | 3 | | CLASS | F | | |
| SER.F. | 1.15 | | | DES | B | | CC | 010A | | |
| NEMA-NOM-EFF | 82.5 | | | | | | | | | |
| RATING | 40C AMB-CONT | | | | | | | | | |
| DE BRG | 6205 | | | ODE BRG | | 6203 | | | | |
| GREASE | POLYREX EM | | | | | | | | | |
| C HP FR | 60 | | | C HP TO | | 90 | | | | |
| CT HZ FROM | 6 | | | CT HZ TO | | 60 | | | | |
| SER.NO | | | | | | | | | | |
| | 50C AT 1.0 SF | | | | | | | | | |
| | | | | | | VT HZ FROM | 6 | | VT HZ TO | 60 |

| Parts List | | |
|----------------|--|----------|
| Part Number | Description | Quantity |
| SA319756 | SA 35E4315M497G1 | 1.000 EA |
| RA307465 | RA 35E4315M497G1 | 1.000 EA |
| NS2512A01 | INSULATOR, CONDUIT BOX X | 1.000 EA |
| 35CB1001A01E | SPL CONDUIT BOX, MACHINED (E-COAT) | 1.000 EA |
| 35GS1022A02 | GASKET BOX .06 THK NEOP BLK HDN 30-40 DU | 1.000 EA |
| 51XB1016A08 | 10-16X 1/2HXWSSLD SERTYB | 2.000 EA |
| 11XW1032G06 | 10-32 X .38, TAPTITE II, HEX WSHR SLTD U | 1.000 EA |
| HW3001B01 | BRASS CUP WASHER, FOR #8 SCREW | 1.000 EA |
| 35EP1100F12LP2 | FRONT TEFC 203 BRG W/ SEAL | 1.000 EA |
| HA4054 | SHORT T-DRAIN FITTING, .125" N.P.T. | 1.000 EA |
| HW4606A01 | JM CLIPPER/SEAL (WDE-0667-1064-BH49) | 1.000 EA |
| HW4500A33 | 1/8 NPT STAINLESS,HOLO-KROME #13002,PRES | 3.000 EA |
| HW5100A03SP | WAVY WASHER (W1543-017) | 1.000 EA |
| 35EP1300A113E | PUEP ENCL 205 BRG F/SEAL, (4).125 NPT | 1.000 EA |
| HA4054 | SHORT T-DRAIN FITTING, .125" N.P.T. | 1.000 EA |
| HW4500A33 | 1/8 NPT STAINLESS,HOLO-KROME #13002,PRES | 3.000 EA |
| HW4606A02 | JM CLIPPER/SEAL (LWE-0938-1624-AL23) | 1.000 EA |
| 12XN1032S20 | 10-32 X 1-1/4 HEX M.S. , STAINLESS STEEL | 2.000 EA |
| 51XB1214A16 | 12-14X1.00 HXWSSLD SERTYB | 1.000 EA |
| 35FH4005A01LP2 | IEC FH NO GREASER | 1.000 EA |
| 10XN1032S08 | 10-32X1/2 HEX HEAD S STL | 3.000 EA |
| 35CB4516E | CONDUIT BOX LID, E-COAT | 1.000 EA |
| 36GS1002 | GASKET, 1/16" NEOPRENE CONDUIT BOX LID | 1.000 EA |
| 59XW0832S07 | TAPTITE II,HEX WSHR UNSLTD SER,410 S.S., | 4.000 EA |

| Parts List (continued) | | |
|------------------------|--|----------|
| Part Number | Description | Quantity |
| HW2502D13 | SS KEY, 3/16 SQ X 1.375 | 1.000 EA |
| HA7000A04 | KEY RETAINER 0.625 DIA SHAFTS | 1.000 EA |
| MJ5001A02 | 732 CL SEALANT 3 OZ DIXIE BEARING 289100 | 0.001 EA |
| 85XU0407S04 | 4X1/4 U DRIVE PIN STAINLESS | 2.000 EA |
| LB1164 | LABEL,WARNING AND DRAIN | 1.000 EA |
| MJ5001A23 | P.D. GEORGE B-276 AIR DRY VARNISH | 0.001 GA |
| LB1000 | LABEL, DIRTY DUTY | 1.000 EA |
| MG2000A02 | RUST VETO-377-HF HOUGHTON | 0.001 GA |
| WD1000D21 | TRM,T&B #B71M,RING,18-14,.25,NON-INSL | 3.000 EA |
| MJ1000A02 | GREASE, POLYREX EM EXXON (USe 4824-15A) | 0.050 LB |
| HA3100S07 | THRUBOLT 10-32 X 8.375 SS | 4.000 EA |
| MG1500Y02 | PRIMER,347.29+347.29C ACTIVATOR WILKOPON | 0.010 GA |
| MG1025L01 | WILKOFASFD, 786.04, BLACK | 0.010 GA |
| LC0005 | CONN.DIA.,TY M,9-LD,DUAL VOLT,REVERSING | 1.000 EA |
| NP3504E | SS DIRTY DUTY PLUS INV UL CSA-C US EEV | 1.000 EA |
| 36PA1000 | PKG GRP, PRINT PK1016A06 | 1.000 EA |
| MN416A01 | TAG-INSTAL-MAINT no wire (1200/bx) 11/14 | 1.000 EA |

AC Induction Motor Performance Data

Record # 55777 - Typical performance - not guaranteed values

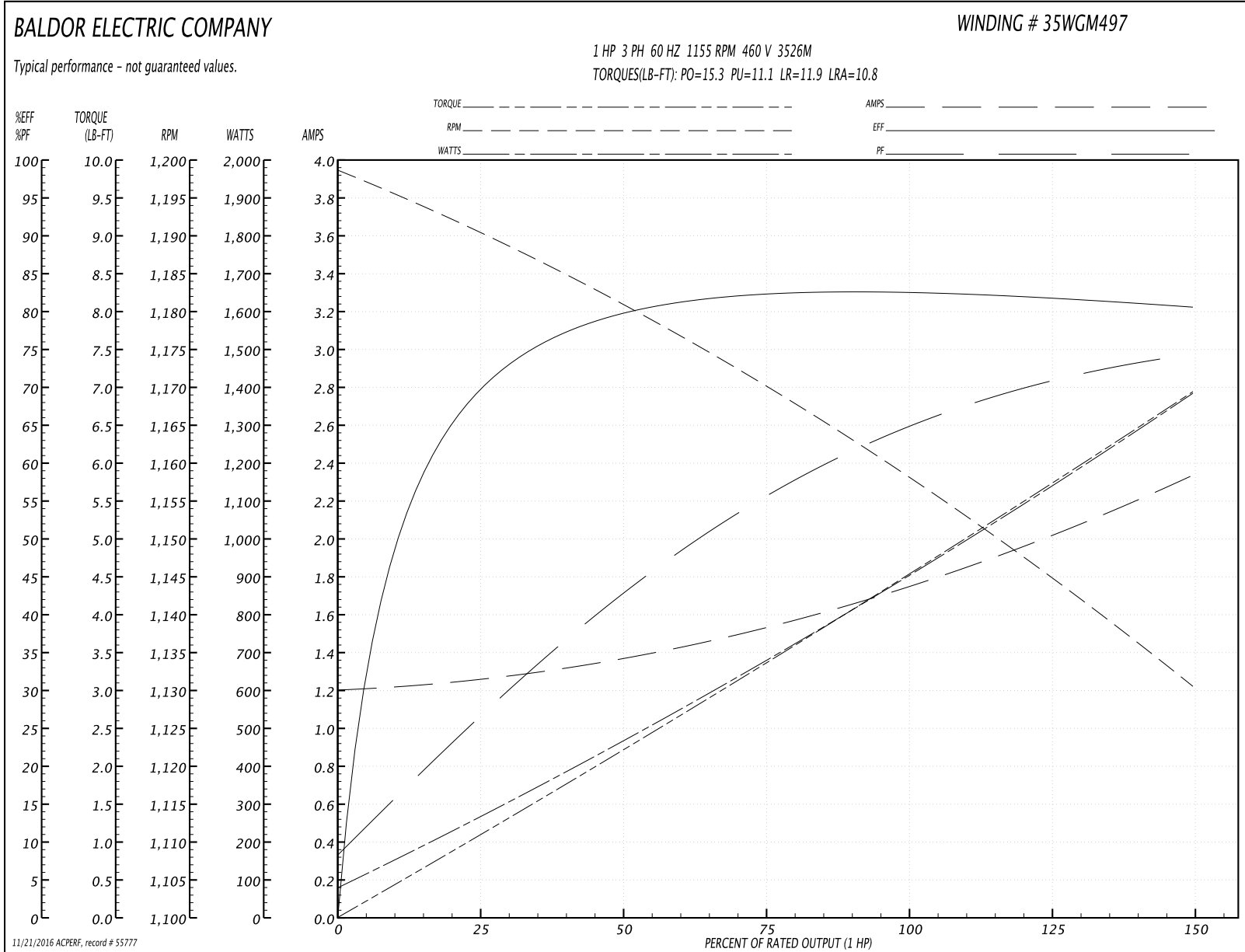
| | | |
|-------------------------------|--------------------|------------------------|
| Winding: 35WGM497-R069 | Type: 3526M | Enclosure: TEFC |
|-------------------------------|--------------------|------------------------|

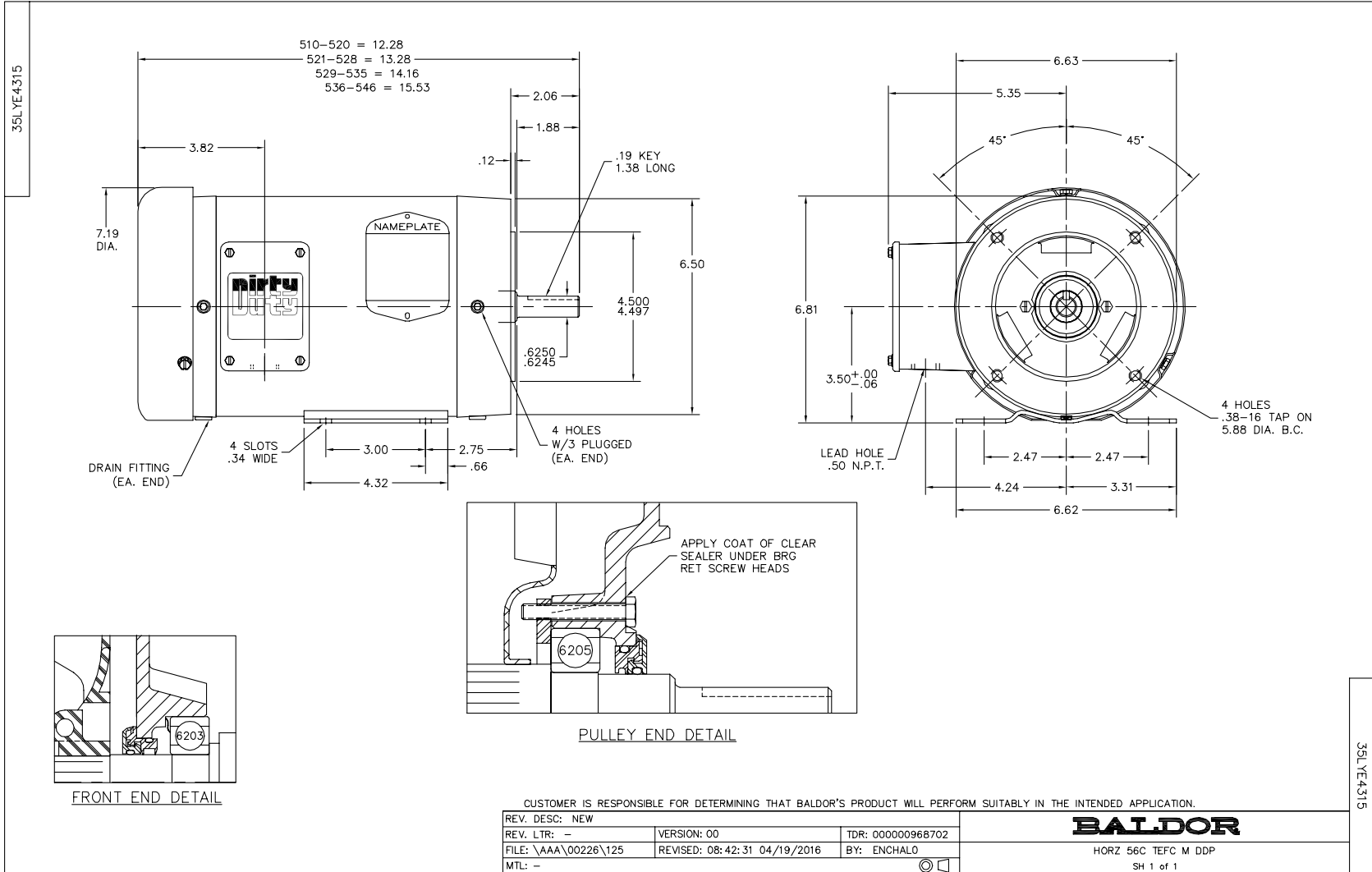
| Nameplate Data | | | | 460 V, 60 Hz: High Voltage Connection | |
|-----------------------|--------------|--------------|----|--|--------------------------|
| Rated Output (HP) | 1 | | | Full Load Torque | 4.51 LB-FT |
| Volts | 230/460 | | | Start Configuration | direct on line |
| Full Load Amps | 3.6/1.8 | | | Breakdown Torque | 15.3 LB-FT |
| R.P.M. | 1155 | | | Pull-up Torque | 11.1 LB-FT |
| Hz | 60 | Phase | 3 | Locked-rotor Torque | 11.9 LB-FT |
| NEMA Design Code | B | KVA Code | K | Starting Current | 10.8 A |
| Service Factor (S.F.) | 1.15 | | | No-load Current | 1.21 A |
| NEMA Nom. Eff. | 82.5 | Power Factor | 64 | Line-line Res. @ 25°C | 16.42 Ω |
| Rating - Duty | 40C AMB-CONT | | | Temp. Rise @ Rated Load | 47°C |
| S.F. Amps | | | | Temp. Rise @ S.F. Load | 56°C |
| | | | | Locked-rotor Power Factor | 41.5 |
| | | | | Rotor inertia | 0.155 LB-FT ² |

Load Characteristics 460 V, 60 Hz, 1 HP

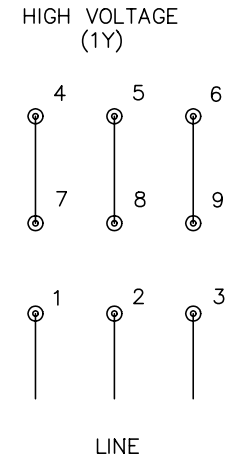
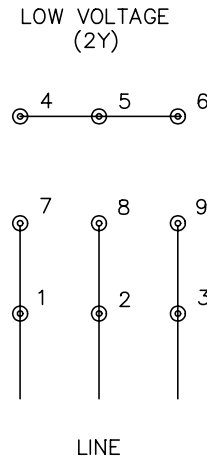
| % of Rated Load | 25 | 50 | 75 | 100 | 125 | 150 | S.F. |
|-----------------|--------|--------|--------|--------|--------|--------|------|
| Power Factor | 27 | 43 | 55 | 64 | 71 | 75 | 68 |
| Efficiency | 69 | 79.4 | 82.3 | 82.7 | 82 | 80.4 | 82.3 |
| Speed | 1190.4 | 1180.7 | 1170.3 | 1158.7 | 1145.5 | 1130.2 | 1151 |
| Line amperes | 1.25 | 1.36 | 1.53 | 1.75 | 2.02 | 2.33 | 1.91 |

Performance Graph at 460V, 60Hz, 1.0HP Typical performance - Not guaranteed values





CD0005



NOTES:

1. INTERCHANGE ANY TWO LINE LEADS TO REVERSE ROTATION.
2. OPTIONAL THERMOSTATS ARE PROVIDED WHEN SPECIFIED.
3. ACTUAL NUMBER OF INTERNAL PARALLEL CIRCUITS MAY BE A MULTIPLE OF THOSE SHOWN ABOVE.
4. LEAD COLORS ARE OPTIONAL. LEADS MUST ALWAYS BE NUMBERED AS SHOWN.

| | | | |
|---|---------|-------------------------|--------------|
| REV. DESC: REVISE TO SHOW OPTIONAL COLORS | | | |
| REV. LTR: E | BY: JLP | REVISED: 01/19/99 10:15 | TDR: 0171435 |
| 9000D | | FILE: AAA00005140 | MDL: - |
| | | MTL: - | |

BALDOR ELECTRIC Co.

3PH, DV, 9 LEADS

CD0005