

BALDOR® • *RELIANCE*

Product Information Packet

EM3559

3HP,3450RPM,3PH,60HZ,56H,3532M,TEFC,F1,N

| Part Detail | | | | | | | |
|-------------|------|----------------|-------|-------------|----------|---------------|------------|
| Revision: | C | Status: | PRD/A | Change #: | | Proprietary: | No |
| Type: | AC | Prod. Type: | 3532M | Elec. Spec: | 35WGQ060 | CD Diagram: | CD0005 |
| Enclosure: | TEFC | Mfg Plant: | | Mech. Spec: | 35H876 | Layout: | 35LYH876 |
| Frame: | 56H | Mounting: | F1 | Poles: | 02 | Created Date: | 04-02-2015 |
| Base: | RG | Rotation: | R | Insulation: | F | Eff. Date: | 09-19-2016 |
| Leads: | 9#18 | | | | | Replaced By: | |
| Literature: | | Elec. Diagram: | | | | | |

| | | | | | | | | | | |
|----------------------------------|--------------|--|-------------|----|-----------------------|------|--|-----------|-----------|---|
| Nameplate NP3441LUA | | | | | | | | | | |
| CAT.NO. | EM3559 | | | | | | | | | |
| SPEC. | 35H876Q060G1 | | | | | | | | | |
| HP | 3 | | | | | | | | | |
| VOLTS | 230/460 | | | | | | | | | |
| AMP | 7.2/3.6 | | | | | | | | | |
| RPM | 3450 | | | | | | | | | |
| FRAME | 56H | | | | HZ | 60 | | | PH | 3 |
| SER.F. | 1.15 | | CODE | L | DES | B | | CL | F | |
| NEMA-NOM-EFF | 86.5 | | PF | 92 | | | | | | |
| RATING | 40C AMB-CONT | | | | | | | | | |
| CC | 010A | | | | USABLE AT 208V | | | 7.9 | | |
| DE | 6205 | | | | ODE | 6203 | | | | |
| ENCL | TEFC | | SN | | | | | | | |
| VPWM INVERTER READY | | | | | | | | | | |
| CT6-60H(10:1)VT3-60H(20:1 | | | | | | | | | | |
| 50Hz 3HP 190/380V 8.8/4.4A | | | | | | | | | SF1.0 | |

| Parts List | | |
|----------------|---|----------|
| Part Number | Description | Quantity |
| SA296136 | SA 35H876Q060G1 | 1.000 EA |
| RA282186 | RA 35H876Q060G1 | 1.000 EA |
| S/P107-000-001 | SUPER E PROC'S-FS, WS & CK PLTS | 1.000 EA |
| NS2512A01 | INSULATOR, CONDUIT BOX X | 1.000 EA |
| 35CB3007 | 35 CB CASTING W/.88 DIA. LEAD HOLE | 1.000 EA |
| 36GS1000SP | GASKET-CONDUIT BOX, .06 THICK #SV-330 LE | 1.000 EA |
| 51XB1016A07 | 10-16 X 7/16 HXWSSLD SERTYB | 2.000 EA |
| 11XW1032G06 | 10-32 X .38, TAPTITE II, HEX WSHR SLTD U | 1.000 EA |
| 35EP3100M02 | FREP TEFC 203 BRG W/O GR SR (RAISED FH MT | 1.000 EA |
| HW5100A03SP | WAVY WASHER (W1543-017) | 1.000 EA |
| 35EP3101A02SP | STD PU ENDPLATE-ENCL-205 BRG LESS GREASE | 1.000 EA |
| XY1032A02 | 10-32 HEX NUT DIRECTIONAL SERRATION | 4.000 EA |
| 35FH4005A32SP | IEC FH NO GR SR W/3 HOLES - PRIMED | 1.000 EA |
| 51XW1032A06 | 10-32 X .38, TAPTITE II, HEX WSHR SLTD S | 3.000 EA |
| 35CB4521 | 35 LIPPED CB LID (GALV & PHOSPH) | 1.000 EA |
| 35GS1030 | 35 GS FOR CB LID - LEXIDE | 1.000 EA |
| 51XW0832A07 | 8-32 X .44, TAPTITE II, HEX WSHR SLTD SE | 4.000 EA |
| HW2501D13 | KEY, 3/16 SQ X 1.375 | 1.000 EA |
| HA7000A04 | KEY RETAINER 0.625 DIA SHAFTS | 1.000 EA |
| 85XU0407S04 | 4X1/4 U DRIVE PIN STAINLESS | 2.000 EA |
| MJ1000A02 | GREASE, POLYREX EM EXXON (USe 4824-15A) | 0.050 LB |
| 34FN3002B01 | EXTERNAL FAN, PLASTIC, .637/.639 HUB W/ | 1.000 EA |
| MG1000Y03 | MUNSELL 2.53Y 6.70/ 4.60, GLOSS 20, | 0.017 GA |
| HA3100A22 | THRUBOLT 10-32 X 10.125 | 4.000 EA |

| Parts List (continued) | | |
|-------------------------------|---|-----------------|
| Part Number | Description | Quantity |
| LB1119N | WARNING LABEL | 1.000 EA |
| LC0005 | CONN.DIA.,TY M,9-LD,DUAL VOLT,REVERSING | 1.000 EA |
| NP3441LUA | ALUM SUPER-E VPWM INV READY UL | 1.000 EA |
| 36PA1000 | PKG GRP, PRINT PK1016A06 | 1.000 EA |

AC Induction Motor Performance Data

Record # 50261 - Typical performance - not guaranteed values

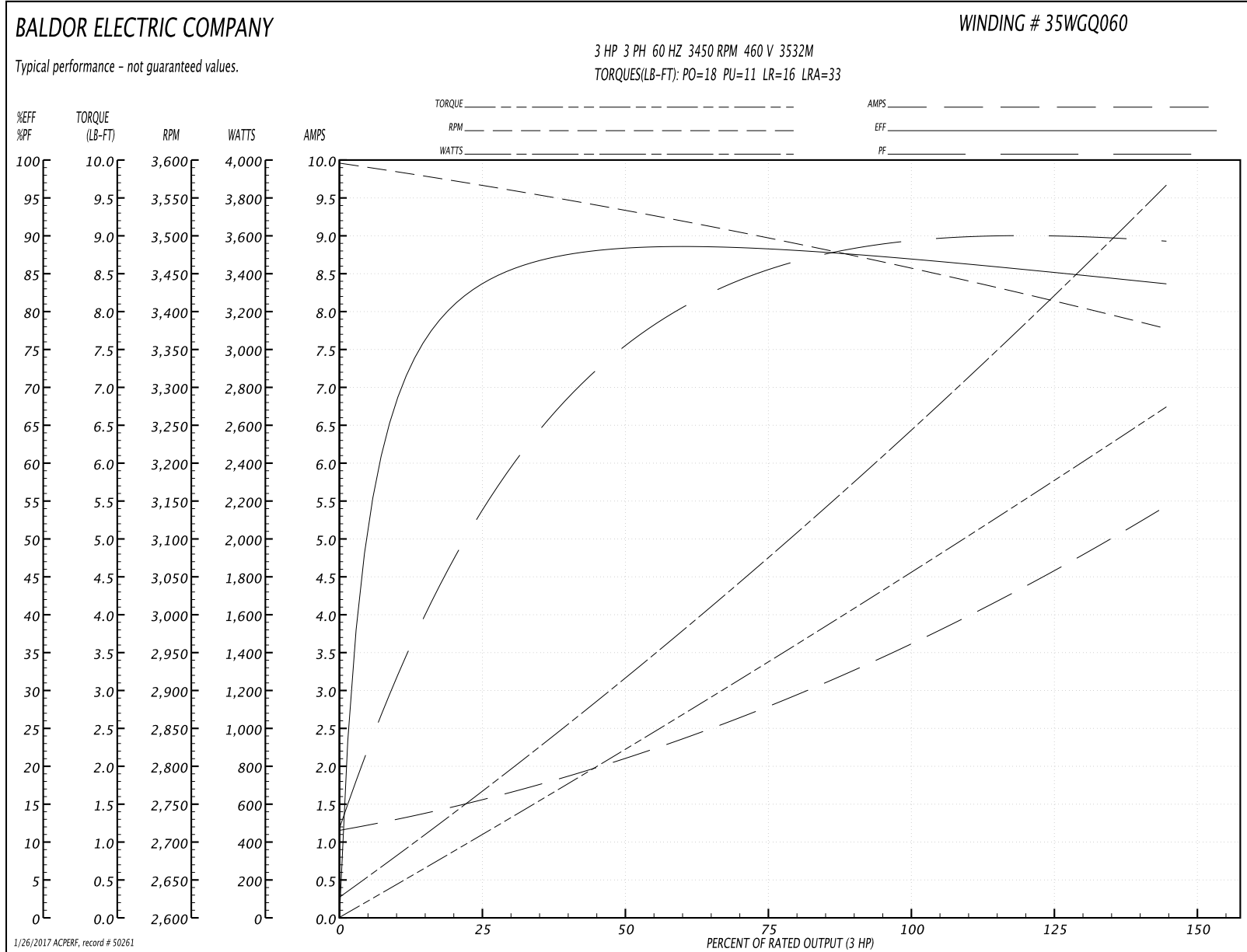
| | | |
|-------------------------------|--------------------|------------------------|
| Winding: 35WGQ060-R002 | Type: 3532M | Enclosure: TEFC |
|-------------------------------|--------------------|------------------------|

| Nameplate Data | | | | 460 V, 60 Hz: High Voltage Connection | |
|-----------------------|--------------|--------------|----|--|----------------|
| Rated Output (HP) | 3 | | | Full Load Torque | 4.5 LB-FT |
| Volts | 230/460 | | | Start Configuration | direct on line |
| Full Load Amps | 7.2/3.6 | | | Breakdown Torque | 18 LB-FT |
| R.P.M. | 3450 | | | Pull-up Torque | 11 LB-FT |
| Hz | 60 | Phase | 3 | Locked-rotor Torque | 16 LB-FT |
| NEMA Design Code | B | KVA Code | L | Starting Current | 33 A |
| Service Factor (S.F.) | 1.15 | | | No-load Current | 1.2 A |
| NEMA Nom. Eff. | 86.5 | Power Factor | 92 | Line-line Res. @ 25°C | 4.72 Ω |
| Rating - Duty | 40C AMB-CONT | | | Temp. Rise @ Rated Load | 61°C |
| S.F. Amps | | | | Temp. Rise @ S.F. Load | 76°C |

Load Characteristics 460 V, 60 Hz, 3 HP

| % of Rated Load | 25 | 50 | 75 | 100 | 125 | 150 | S.F. |
|-----------------|------|------|------|------|------|------|------|
| Power Factor | 62 | 81 | 88 | 92 | 93 | 94 | 93 |
| Efficiency | 83.7 | 87.9 | 88.2 | 87.2 | 85.6 | 83.5 | 86.2 |
| Speed | 3562 | 3531 | 3498 | 3462 | 3421 | 3375 | 3437 |
| Line amperes | 1.5 | 2.1 | 2.8 | 3.6 | 4.5 | 5.4 | 4.1 |

Performance Graph at 460V, 60Hz, 3.0HP Typical performance - Not guaranteed values



AC Induction Motor Performance Data

Record # 59171 - Typical performance - not guaranteed values

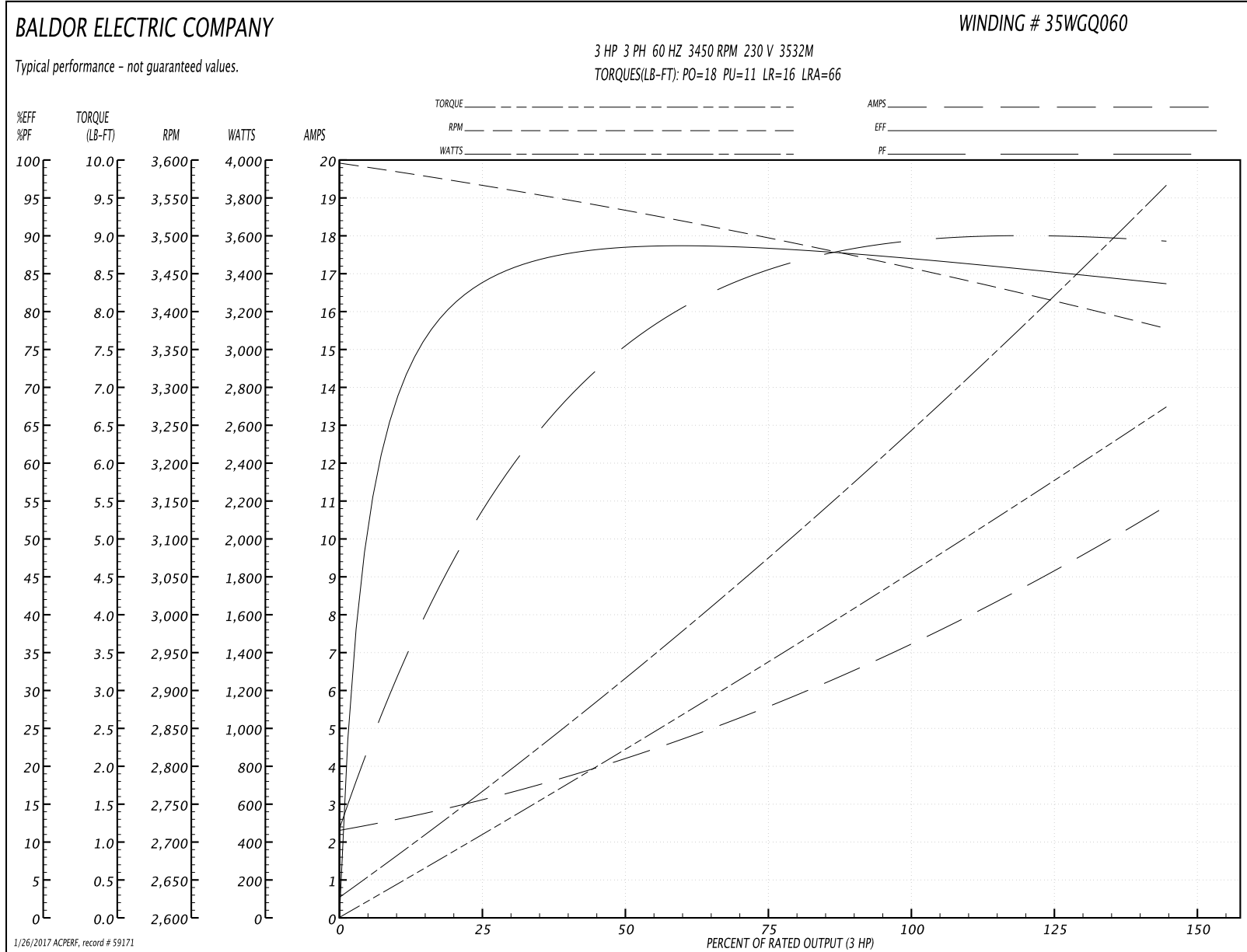
| | | |
|-------------------------------|--------------------|------------------------|
| Winding: 35WGQ060-R002 | Type: 3532M | Enclosure: TEFC |
|-------------------------------|--------------------|------------------------|

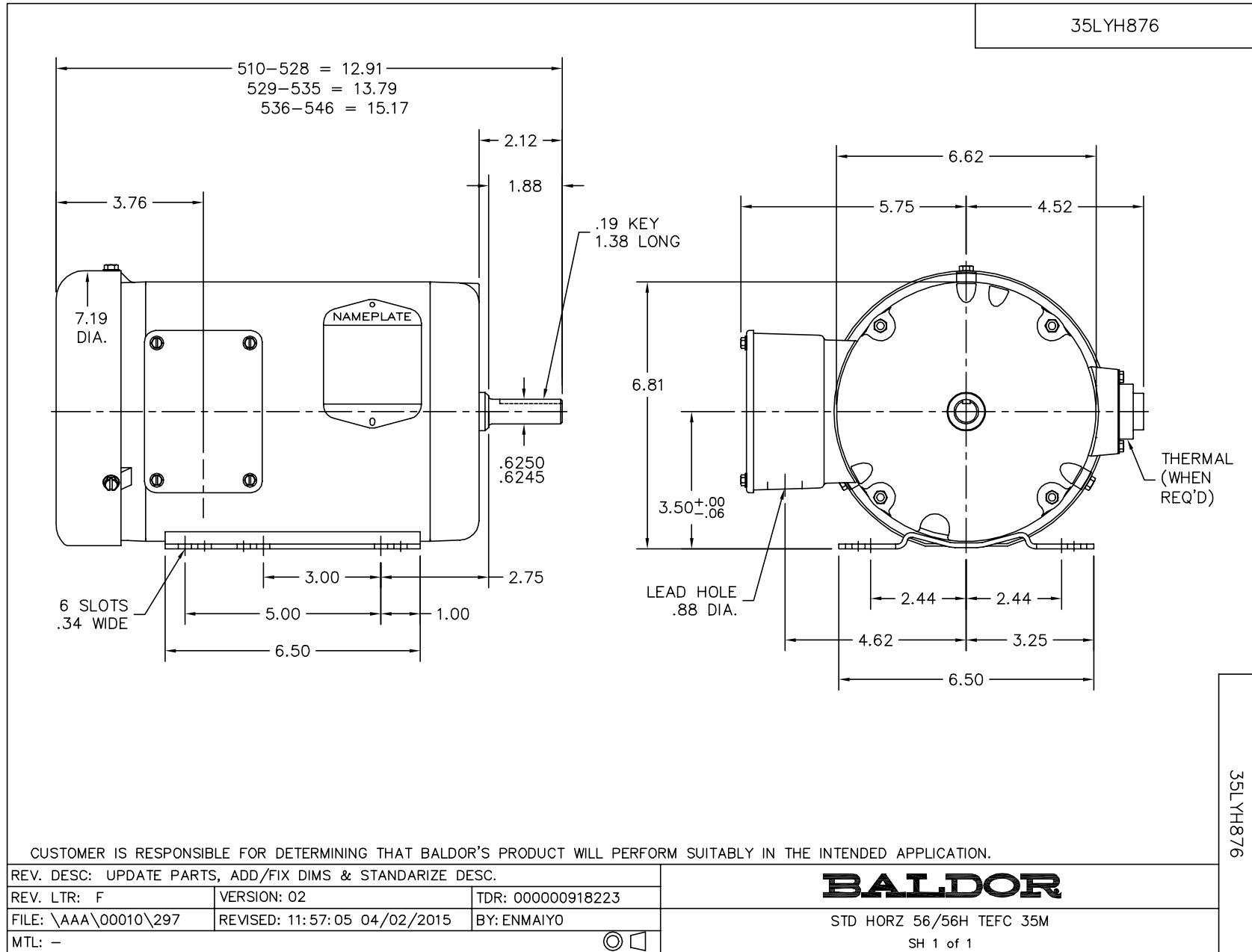
| Nameplate Data | | | | 230 V, 60 Hz: Low Voltage Connection | |
|-----------------------|--------------|--------------|----|---|---------------------------|
| Rated Output (HP) | 3 | | | Full Load Torque | 4.5 LB-FT |
| Volts | 230/460 | | | Start Configuration | direct on line |
| Full Load Amps | 7.2/3.6 | | | Breakdown Torque | 18 LB-FT |
| R.P.M. | 3450 | | | Pull-up Torque | 11 LB-FT |
| Hz | 60 | Phase | 3 | Locked-rotor Torque | 16 LB-FT |
| NEMA Design Code | B | KVA Code | L | Starting Current | 66 A |
| Service Factor (S.F.) | 1.15 | | | No-load Current | 2.4 A |
| NEMA Nom. Eff. | 86.5 | Power Factor | 92 | Line-line Res. @ 25°C | 1.17 Ω |
| Rating - Duty | 40C AMB-CONT | | | Temp. Rise @ Rated Load | 61°C |
| S.F. Amps | | | | Temp. Rise @ S.F. Load | 73°C |
| | | | | Locked-rotor Power Factor | 47.1 |
| | | | | Rotor inertia | 0.0885 LB-FT ² |

Load Characteristics 230 V, 60 Hz, 3 HP

| % of Rated Load | 25 | 50 | 75 | 100 | 125 | 150 | S.F. |
|-----------------|------|------|------|------|------|------|------|
| Power Factor | 57 | 77 | 85 | 88 | 89 | 90 | 89 |
| Efficiency | 84.1 | 87.9 | 88.4 | 87.2 | 85.7 | 83.5 | 86.3 |
| Speed | 3562 | 3531 | 3498 | 3462 | 3421 | 3375 | 3437 |
| Line amperes | 3 | 4.2 | 5.6 | 7.2 | 9 | 10.8 | 8.28 |

Performance Graph at 230V, 60Hz, 3.0HP Typical performance - Not guaranteed values

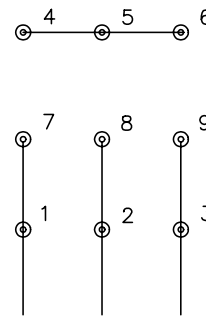




CD0005

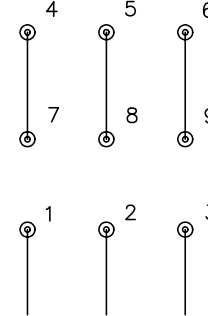


LOW VOLTAGE
(2Y)



LINE

HIGH VOLTAGE
(1Y)



LINE

NOTES:

1. INTERCHANGE ANY TWO LINE LEADS TO REVERSE ROTATION.
2. OPTIONAL THERMOSTATS ARE PROVIDED WHEN SPECIFIED.
3. ACTUAL NUMBER OF INTERNAL PARALLEL CIRCUITS MAY BE A MULTIPLE OF THOSE SHOWN ABOVE.
4. LEAD COLORS ARE OPTIONAL. LEADS MUST ALWAYS BE NUMBERED AS SHOWN.

| | | | |
|---|---------|-------------------------|--------------|
| REV. DESC: REVISE TO SHOW OPTIONAL COLORS | | | |
| REV. LTR: E | BY: JLP | REVISED: 01/19/99 10:15 | TDR: 0171435 |
| 900000 | | FILE: AAA00005140 | MDL: - |
| | | MTL: - | |

BALDOR ELECTRIC Co.

3PH, DV, 9 LEADS

CD0005