

BALDOR® • RELIANCE

Product Information Packet

IDXM7560T

30HP, 1775RPM, 3PH, 60HZ, 326T, 1248M, XPFC, F1

| Part Detail | | | | | | | |
|-------------|------|----------------|-------|-------------|----------|---------------|------------|
| Revision: | G | Status: | PRD/A | Change #: | | Proprietary: | No |
| Type: | AC | Prod. Type: | 1248M | Elec. Spec: | 12WGY411 | CD Diagram: | CD0005 |
| Enclosure: | XPFC | Mfg Plant: | | Mech. Spec: | 12M099 | Layout: | 12LYM099 |
| Frame: | 326T | Mounting: | F1 | Poles: | 04 | Created Date: | 10-24-2013 |
| Base: | RG | Rotation: | R | Insulation: | F | Eff. Date: | 08-29-2016 |
| Leads: | 9#8 | | | | | Replaced By: | |
| Literature: | | Elec. Diagram: | | | | | |

| Nameplate NP0890XPSLEV | | | | | | | | | |
|------------------------|--------------|--|--------|--------------|------------|-------|--|----------|------|
| NO. | | | | | CC | 010A | | | |
| S/N | | | | | TEMP CODE | T2B | | | |
| SPEC. | 12M099Y411G1 | | | | INV. TYPE | PWM | | | |
| CAT.NO. | IDX7560T | | | | C HP FR | 60 | | C HP TO | 90 |
| HP | 30 | | | | CT HZ FROM | 6 | | CT HZ TO | 60 |
| VOLTS | 230/460 | | | | VT HZ FROM | 6 | | VT HZ TO | 60 |
| AMPS | 74/37 | | | | MAG CUR | 30/15 | | | |
| RPM | 1775 | | | | MX RPM | 2700 | | | |
| HZ | 60 | | PH | 3 | CL | F | | | |
| SER.F. | 1.00 | | DES | A | SL HZ | 0.8 | | WK2 | 6.39 |
| FRAME | 326T | | RATING | 40C AMB-CONT | | | | | |
| | | | | | | | | | |
| | | | | | | | | | |
| | | | | | | | | | |

| Parts List | | |
|-------------|--|----------|
| Part Number | Description | Quantity |
| SA271202 | SA 12M099Y411G1 | 1.000 EA |
| RA257832 | RA 12M099Y411G1 | 1.000 EA |
| 12CB1001A01 | K.O.BOX, MACH X-PROOF, 1.50 NPT HOLE | 1.000 EA |
| 10XN3118K16 | 5/16-18 X 1' GRADE #5, STL, ZINC PLATE | 4.000 EA |
| HW1001A31 | LOCKWASHER 5/16, ZINC PLT.591 OD, .319 I | 4.000 EA |
| WD1000B16 | T&B CX70TN TERMINAL | 1.000 EA |
| 10XN2520K06 | 1/4-20 X 3/8" HX HD SCREWGRADE 5, ZINC P | 1.000 EA |
| HW1001A25 | LOCKWASHER 1/4, ZINC PLT .493 OD, .255 I | 1.000 EA |
| 12EP1705A01 | ENDPLATE, MACH. 312 - EXPLOSION PROOF 31 | 1.000 EA |
| HA3051A03 | 1/2-13X2.75 BLT GR8 1.75 TO E NC F/S | 4.000 EA |
| HW1001A50 | LOCKWASHER 1/2, ZINC PLT.,879 OD, .509 I | 4.000 EA |
| HW5100A13 | W4627-047 WVY WSHER | 1.000 EA |
| 12EP1706A01 | ENDPLATE, MACH. 312 - EXPLOSION PROOF 31 | 1.000 EA |
| 10XN3118K44 | 5/16-18 X 2.75" HEX HD, GRADE 5 | 4.000 EA |
| HW1001A31 | LOCKWASHER 5/16, ZINC PLT.591 OD, .319 I | 4.000 EA |
| HA3051A03 | 1/2-13X2.75 BLT GR8 1.75 TO E NC F/S | 4.000 EA |
| HW1001A50 | LOCKWASHER 1/2, ZINC PLT.,879 OD, .509 I | 4.000 EA |
| 12FH1001A01 | FAN HOUSING 312 EXPLOSION PROOF MOTORS | 1.000 EA |
| 10XN3118K12 | 5/16-18 X .75 GRADE 5, ZINC PLATED | 3.000 EA |
| HW1001A31 | LOCKWASHER 5/16, ZINC PLT.591 OD, .319 I | 3.000 EA |
| 12CB1501A01 | COND.BOX LID, MACH., X-PROOF, 310,312 | 1.000 EA |
| 10XN3816K20 | 3/8-16 X 1.25 HEX HD CAP GRADE 5 | 6.000 EA |
| HW1001A38 | LOCKWASHER 3/8, ZINC PLT .688 OD, .382 I | 6.000 EA |
| HW2501H33 | KEY, 1/2 SQ X 3.875 | 1.000 EA |

| Parts List (continued) | | |
|-------------------------------|---|-----------------|
| Part Number | Description | Quantity |
| LB1115N | LABEL,LIFTING DEVICE (ON ROLLS) | 1.000 EA |
| HW4500A20 | 1/8NPT SL PIPE PLUG | 2.000 EA |
| MJ1000A02 | GREASE, POLYREX EM EXXON (USe 4824-15A) | 0.200 LB |
| HW4500A20 | 1/8NPT SL PIPE PLUG | 2.000 EA |
| 09FN3001B03SP | EXTERNAL FAN, PLASTIC | 1.000 EA |
| HW2500A25 | WOODRUFF KEY USA #1008 #BLOW CARBON STEE | 1.000 EA |
| HA6390A01 | HOSE CLAMP FOR 3.12 DIA S.S. OR PLATED | 1.000 EA |
| MG1025G05 | WILKOFASST, 789.227, MED. GRAY CHAR. MET. | 0.125 GA |
| 85XU0407S04 | 4X1/4 U DRIVE PIN STAINLESS | 6.000 EA |
| LB1073 | ALUM XP CAUTION LABEL | 1.000 EA |
| MN416A01 | TAG-INSTAL-MAINT no wire (1200/bx) 11/14 | 1.000 EA |
| LB1119N | WARNING LABEL | 1.000 EA |
| LC0145B01 | CONNECTION LABEL | 1.000 EA |
| NP0890XPSLEV | SS XP INV UL CSA-EEV CC CL-I GP-D | 1.000 EA |
| 14PA1000 | PACKAGING 314 GROUP COMBINED PRINT | 1.000 EA |

AC Induction Motor Performance Data

Record # 44087 - Typical performance - not guaranteed values

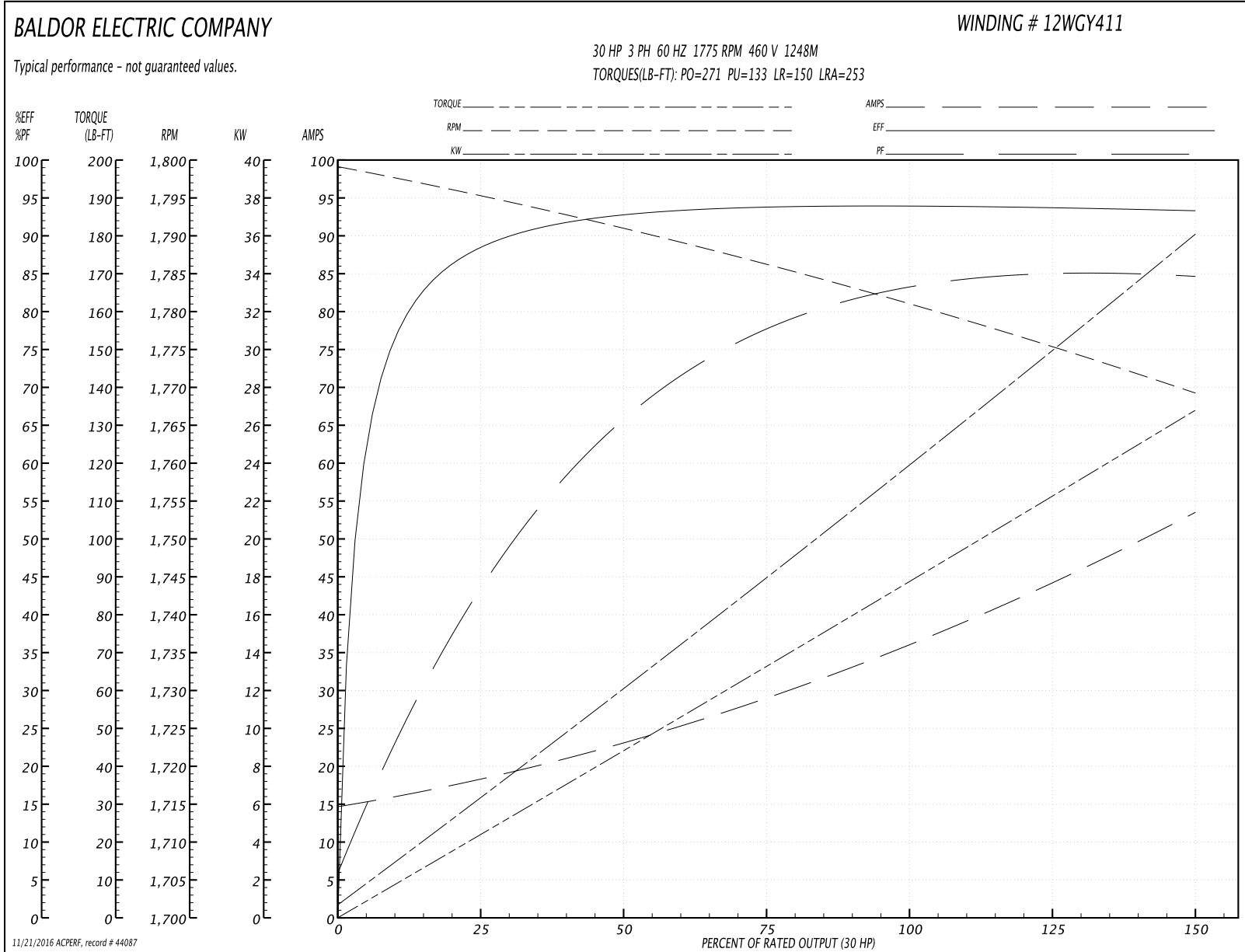
| | | |
|-------------------------------|--------------------|------------------------|
| Winding: 12WGY411-R003 | Type: 1248M | Enclosure: TEFC |
|-------------------------------|--------------------|------------------------|

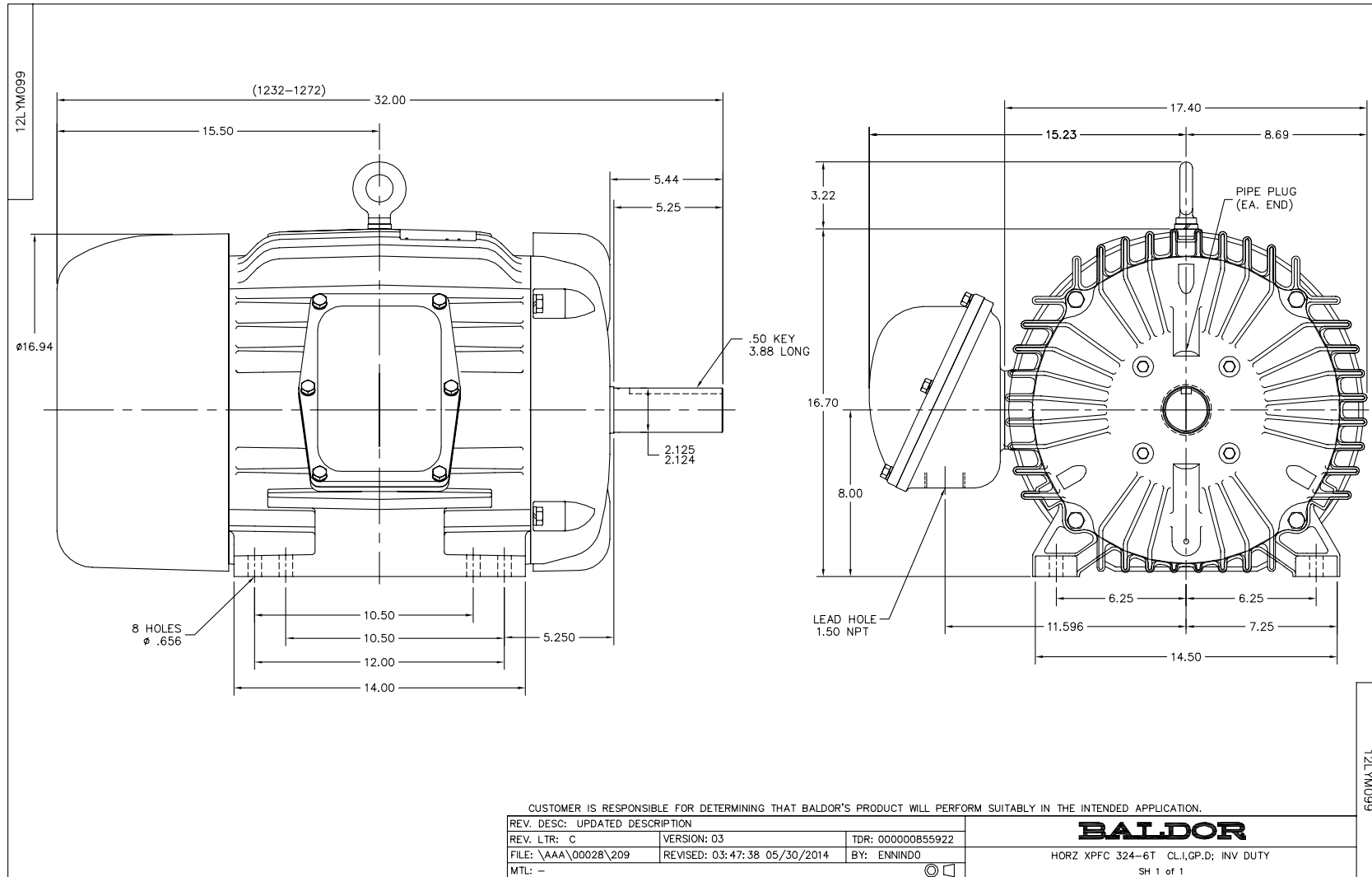
| Nameplate Data | | | | 460 V, 60 Hz: High Voltage Connection | |
|-----------------------|--------------|--------------|----|--|-------------------------|
| Rated Output (HP) | 30 | | | Full Load Torque | 88.8 LB-FT |
| Volts | 230/460 | | | Start Configuration | direct on line |
| Full Load Amps | 74/37 | | | Breakdown Torque | 271 LB-FT |
| R.P.M. | 1775 | | | Pull-up Torque | 133 LB-FT |
| Hz | 60 | Phase | 3 | Locked-rotor Torque | 150 LB-FT |
| NEMA Design Code | A | KVA Code | H | Starting Current | 253 A |
| Service Factor (S.F.) | 1 | | | No-load Current | 15.3 A |
| NEMA Nom. Eff. | 93.6 | Power Factor | 82 | Line-line Res. @ 25°C | 0.2019 Ω |
| Rating - Duty | 40C AMB-CONT | | | Temp. Rise @ Rated Load | 43°C |
| | | | | Locked-rotor Power Factor | 27 |
| | | | | Rotor inertia | 6.39 LB-FT ² |

Load Characteristics 460 V, 60 Hz, 30 HP

| % of Rated Load | 25 | 50 | 75 | 100 | 125 | 150 |
|-----------------|--------|--------|--------|--------|--------|--------|
| Power Factor | 46 | 67 | 77 | 82 | 84 | 85 |
| Efficiency | 88.5 | 92.8 | 93.8 | 94 | 93.7 | 93.2 |
| Speed | 1795.7 | 1790.9 | 1786.1 | 1780.8 | 1775.7 | 1769.2 |
| Line amperes | 17.6 | 22.6 | 29.2 | 36.5 | 44.6 | 53 |

Performance Graph at 460V, 60Hz, 30.0HP Typical performance - Not guaranteed values

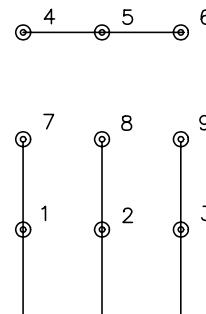




CD0005



LOW VOLTAGE
(2Y)



LINE

HIGH VOLTAGE
(1Y)



LINE

NOTES:

1. INTERCHANGE ANY TWO LINE LEADS TO REVERSE ROTATION.
2. OPTIONAL THERMOSTATS ARE PROVIDED WHEN SPECIFIED.
3. ACTUAL NUMBER OF INTERNAL PARALLEL CIRCUITS MAY BE A MULTIPLE OF THOSE SHOWN ABOVE.
4. LEAD COLORS ARE OPTIONAL. LEADS MUST ALWAYS BE NUMBERED AS SHOWN.

| | | | |
|---|---------|-------------------------|--------------|
| REV. DESC: REVISE TO SHOW OPTIONAL COLORS | | | |
| REV. LTR: E | BY: JLP | REVISED: 01/19/99 10:15 | TDR: 0171435 |
| 90000 | | FILE: AAA00005140 | MDL: - |
| | | MTL: - | |

BALDOR ELECTRIC Co.

3PH, DV, 9 LEADS

CD0005