

# **BALDOR**® • ***RELIANCE***

## **Product Information Packet**

# **JSL425A**

**.75HP,3450RPM,1PH,60HZ,56Y,3420L,OPEN,F1**

Part Detail							
Revision:	E	Status:	PRD/A	Change #:		Proprietary:	No
Type:	AC	Prod. Type:	3420L	Elec. Spec:	34WGR050	CD Diagram:	CD0203
Enclosure:	OPEN	Mfg Plant:		Mech. Spec:	34M228	Layout:	34LYM228
Frame:	56Y	Mounting:	F1	Poles:	02	Created Date:	05-09-2013
Base:	N	Rotation:	FOS	Insulation:	B	Eff. Date:	06-21-2016
Leads:	5#18,1#14 #1TH					Replaced By:	
Literature:		Elec. Diagram:					

Nameplate NP1257L	
CAT.NO.	JSL425A
SPEC.	34M228R050G1
HP	.75
VOLTS	115/230
AMP	10.4/5.2
RPM	3450
FRAME	56Y
SER.F.	1.50
NEMA-NOM-EFF	62
RATING	40C AMB-CONT
CC	USABLE AT 208V 6.3
DE	6203
ENCL	OPEN
	SFA 13.6/6.8

CODE	K	DES	-	CL	B	PH	1
PF	74	HZ	60				
ODE	6203						
SN							

Parts List		
Part Number	Description	Quantity
SA262964	SA 34M228R050G1	1.000 EA
RA249687	RA 34M228R050G1	1.000 EA
TPMRJ26AX	THERMAL 1PH 0.75 AUT 120C	1.000 EA
EC1216A02SP	ELEC CAP, 216-259 MFD, 125V, 1.48D X 3.	1.000 EA
51XB1016A05	10-16X5/16HX WA SL SR TYB (F/S)	1.000 EA
WD1000B16	T&B CX70TN TERMINAL	1.000 EA
51XW0832A07	8-32 X .44, TAPTITE II, HEX WSHR SLTD SE	3.000 EA
HA1005A05SP	SLINGER, OD 1.50, ID .659, 203 BRG	1.000 EA
34CB4800SP	CAPACITOR COVER, STAMPED PRIMED	1.000 EA
34GS3001	GASKET, CAPACITOR BOX	1.000 EA
51XB1016A05	10-16X5/16HX WA SL SR TYB (F/S)	2.000 EA
NS2501A01	INSULATOR, CAPACITOR	1.000 EA
WD4100A01	DP-875 HEYCO PLUG OR 62MP0875 MICRO PLAS	1.000 EA
WD4100A04	62MP0687 HOLE PLUG OR DP-687 HEYCO	1.000 EA
HW5100A03SP	WAVY WASHER (W1543-017)	1.000 EA
34EP3501A03	ENDPLATE, MACH POOL PUMP 17 FRAME-ASSY/K	1.000 EA
51XN1032A20	10-32 X 1 1/4 HX WS SL SR	2.000 EA
34AD2007	BAFFLE PLATE INJECTION MOLD	1.000 EA
12XF0632A06	6-32X3/8 TY F HEX HD SLT	4.000 EA
34CB4501SP	TERMINAL BOX LID, STAMPED X (PLATED)	1.000 EA
34GS1018	GASKET, TERM PLATE LID BLACK NEOPRENE	1.000 EA
51XW0832A07	8-32 X .44, TAPTITE II, HEX WSHR SLTD SE	2.000 EA
RM1010A12	.437 I.D. 1" VINYL CAP (SHORT) MOCAP	1.000 EA
LB1009N	LABEL,ROTATION DIRECTION (ON ROLLS)	1.000 EA

<b>Parts List (continued)</b>		
<b>Part Number</b>	<b>Description</b>	<b>Quantity</b>
MG1000G27	MED CHARCOAL METALLIC GREY 400-0096	0.014 GA
10XF0440S02	04-40 X 1/8 TYPE F HEX HD STAINLESS STIC	2.000 EA
34EP3202A07	FR ENDPLATE, MACH	1.000 EA
HA3100A38	THRUBOLT 10-32 X 9.375	4.000 EA
SP5086A01	MODEL 34 TERMINAL PANEL SWITCH WITH LEAD	1.000 EA
LC0546	CONNECTION LABEL	1.000 EA
LB1118	LABEL,WARNING (ROLL LABEL)	1.000 EA
MN416A01	TAG-INSTAL-MAINT no wire (1200/bx) 11/14	1.000 EA
NP1257L	ALUM UL CSA CC THERMAL REV MTG	1.000 EA
PK3083T	STYROFOAM PACKING CRADLE W/TAPE	1.000 EA
35PA1066	PKG GRP, PRINT PK1008A06	1.000 EA

**AC Induction Motor Performance Data**

Record # 42891 - Typical performance - not guaranteed values

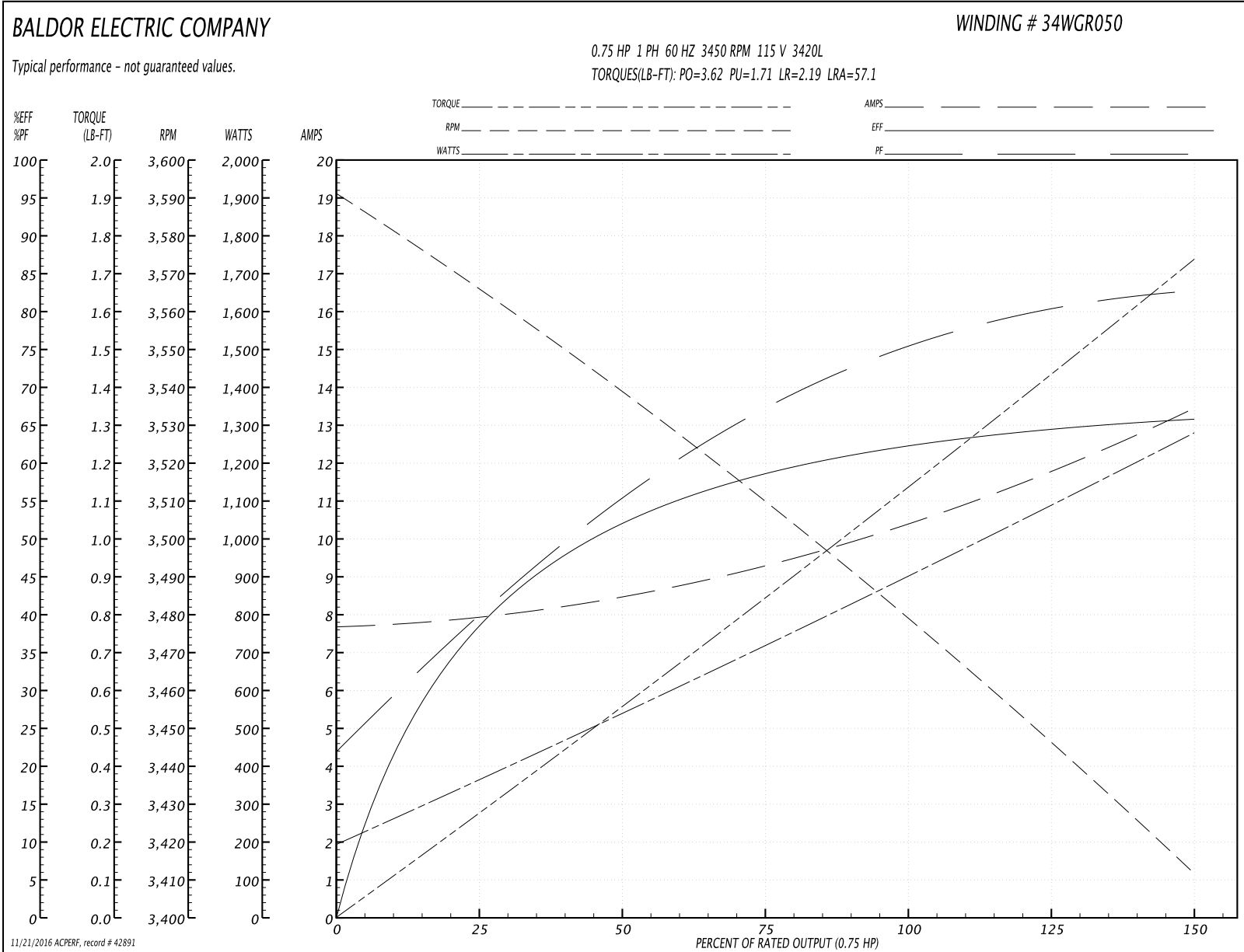
<b>Winding:</b> 34WGR050-R001	<b>Type:</b> 3420L	<b>Enclosure:</b> OPEN
-------------------------------	--------------------	------------------------

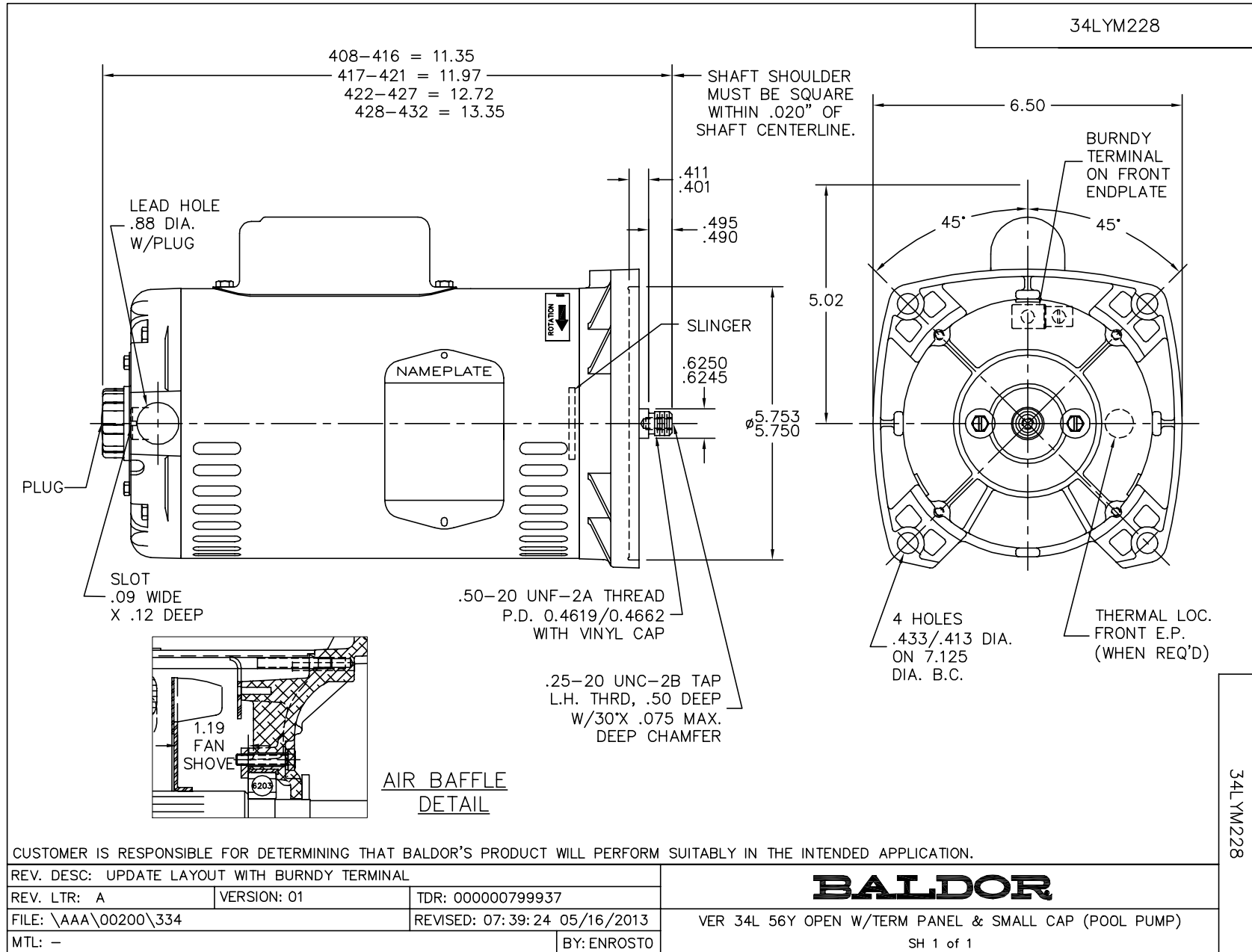
Nameplate Data				115 V, 60 Hz: Low Voltage Connection	
Rated Output (HP)	.75			Full Load Torque	1.13 LB-FT
Volts	115/230			Start Configuration	direct on line
Full Load Amps	10.4/5.2			Breakdown Torque	3.62 LB-FT
R.P.M.	3450			Pull-up Torque	1.71 LB-FT
Hz	60	Phase	1	Locked-rotor Torque	2.19 LB-FT
NEMA Design Code	-	KVA Code	K	Starting Current	57.1 A
Service Factor (S.F.)	1.5			No-load Current	7.66 A
NEMA Nom. Eff.	62	Power Factor	74	Line-line Res. @ 25°C	0.64683 Ω A Ph 2.6061 Ω B Ph
Rating - Duty	40C AMB-CONT			Temp. Rise @ Rated Load	31°C
S.F. Amps	13.6/6.8			Temp. Rise @ S.F. Load	44°C

Load Characteristics 115 V, 60 Hz, 0.75 HP

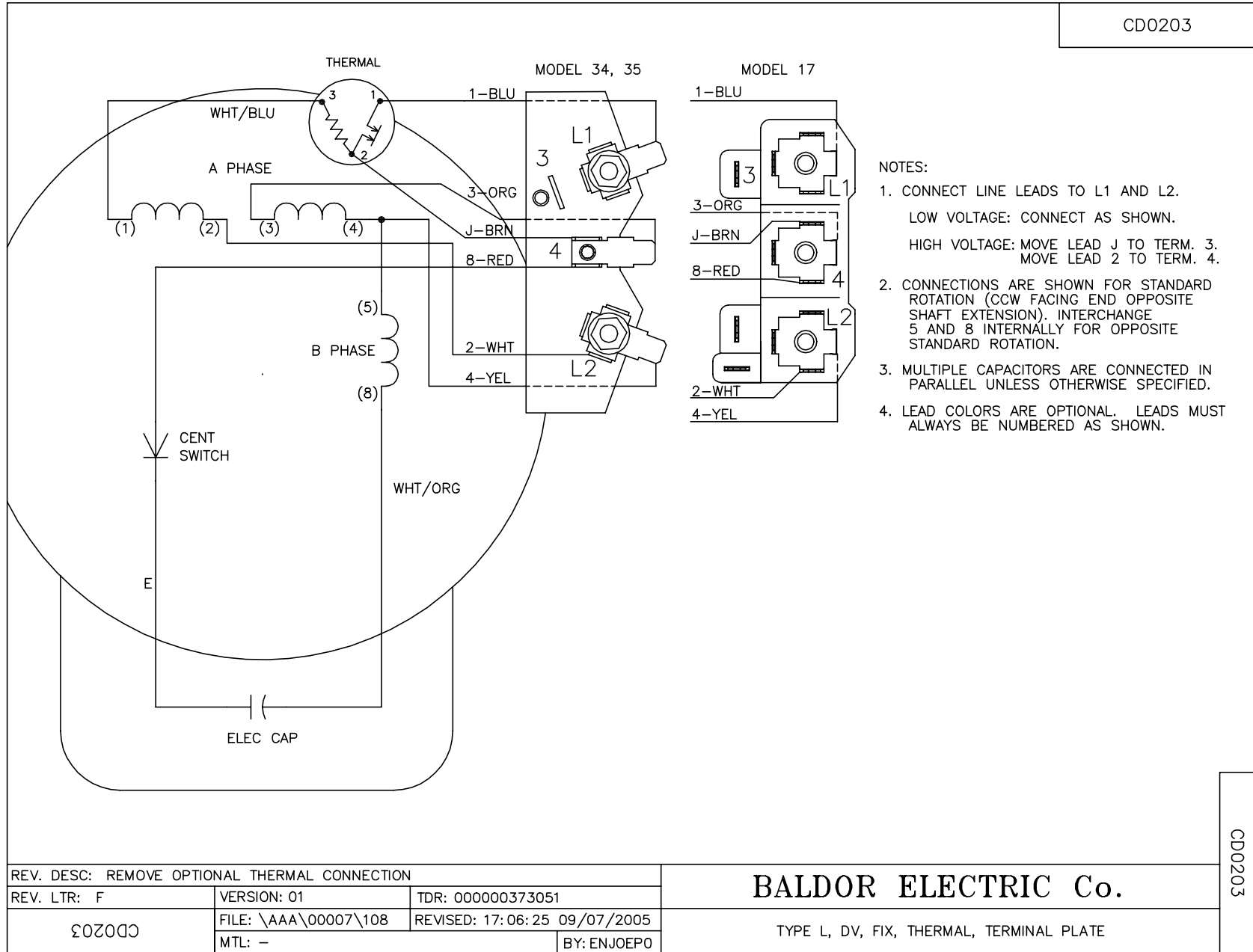
% of Rated Load	25	50	75	100	125	150	S.F.
Power Factor	42	56	68	74	80	84	84
Efficiency	36.7	52.2	57.5	63.6	65.3	64.9	64.9
Speed	3560.7	3536.7	3510.6	3482.4	3449.5	3408.7	3409
Line amperes	7.98	8.39	9.44	10.3	11.7	13.5	13.5

Performance Graph at 115V, 60Hz, 0.75HP Typical performance - Not guaranteed values





CD0203



CD0203

REV. DESC: REMOVE OPTIONAL THERMAL CONNECTION		
REV. LTR: F	VERSION: 01	TDR: 000000373051
CD0203	FILE: \AAA\00007\108	REVISED: 17:06:25 09/07/2005
	MTL: -	BY: ENJOEPO

**BALDOR ELECTRIC Co.**

TYPE L, DV, FIX, THERMAL, TERMINAL PLATE