

BALDOR® • ***RELIANCE***

Product Information Packet

L1206-50

.33HP,1425RPM,1PH,50HZ,48,3418L,OPEN,F1

Part Detail							
Revision:	AF	Status:	PRD/A	Change #:		Proprietary:	No
Type:	AC	Prod. Type:	3418L	Elec. Spec:	34WGW647	CD Diagram:	CD0001
Enclosure:	OPEN	Mfg Plant:		Mech. Spec:	34F001	Layout:	34LYF001
Frame:	48	Mounting:	F1	Poles:	04	Created Date:	
Base:	RG	Rotation:	R	Insulation:	B	Eff. Date:	07-26-2016
Leads:	6#18					Replaced By:	
Literature:		Elec. Diagram:					

Nameplate NP1372L													
CAT.NO.	L1206-50												
SPEC.	34F01W647												
HP	.33												
VOLTS	110/220												
AMP	4.6/2.3												
RPM	1425 IP23												
FRAME	48					HZ	50			PH	1		
SER.F.	1.35					CODE	F		DES	N		CL	B
NEMA-NOM-EFF	62					PF	74						
RATING	40C AMB-CONT												
CC												USABLE AT 208V	
DE	6203					ODE	6203						
ENCL	OPEN					SN							
	SFA 5.6/2.8												

Parts List		
Part Number	Description	Quantity
SA007615	SA 34F01W647	1.000 EA
RA004002	RA 34F01W647	1.000 EA
NS2512A01	INSULATOR, CONDUIT BOX X	1.000 EA
34CB3002A	CB CAST W/.88 DIA HOLE	1.000 EA
51XB1016A07	10-16 X 7/16 HXWSSLD SERTYB	2.000 EA
11XW1032G06	10-32 X .38, TAPTITE II, HEX WSHR SLTD U	1.000 EA
51XW0832A07	8-32 X .44, TAPTITE II, HEX WSHR SLTD SE	2.000 EA
SP1006A01	TERM. BOARD, MODE 35 SW X H-23655	1.000 EA
34EP3210A01SP	FR ENDPLATE, MACH	1.000 EA
NS2500A01	INSULATOR, AUTO THER PROT	1.000 EA
WD1000A16	2-520128-2 AMP FLAG TERMINAL(4M/RL)	1.000 EA
34CB4800SP	CAPACITOR COVER, STAMPED PRIMED	1.000 EA
51XB1016A05	10-16X5/16HX WA SL SR TYB (F/S)	2.000 EA
HW5100A03SP	WAVY WASHER (W1543-017)	1.000 EA
34EP3212A02	PU ENDPLATE, MODEL 34 OPEN	1.000 EA
XY1032A02	10-32 HEX NUT DIRECTIONAL SERRATION	4.000 EA
34CB4517	CB LID 4 MTG HOLES .22 DIA STAMPED, FOR	1.000 EA
51XW0832A07	8-32 X .44, TAPTITE II, HEX WSHR SLTD SE	4.000 EA
MG1000G27	MED CHARCOAL METALLIC GREY 400-0096	0.014 GA
10XF0440S02	04-40 X 1/8 TYPE F HEX HD STAINLESS STIC	2.000 EA
SP5051B16	MDL 34 TORQ STAT SW,TYPE L , STD F1 & F2	1.000 EA
HA3100A47	THRUBOLT 10-32 X 7.625	4.000 EA
EC1189A02SP	61B2D120189NNBA ELEC CAP, 189-227MFD, 12	1.000 EA
LC0001	CONN LABEL TYPE L, 6 LEAD, DUAL VOLTS, R	1.000 EA

Parts List (continued)		
Part Number	Description	Quantity
LB1119N	WARNING LABEL	1.000 EA
MN416A01	TAG-INSTAL-MAINT no wire (1200/bx) 11/14	1.000 EA
NP1372L	ALUM UL CSA CE CC	1.000 EA
34PA1002	PKG GRP, PRINT PK1001A01	1.000 EA

AC Induction Motor Performance Data
Record # 7046 - Typical performance - not guaranteed values

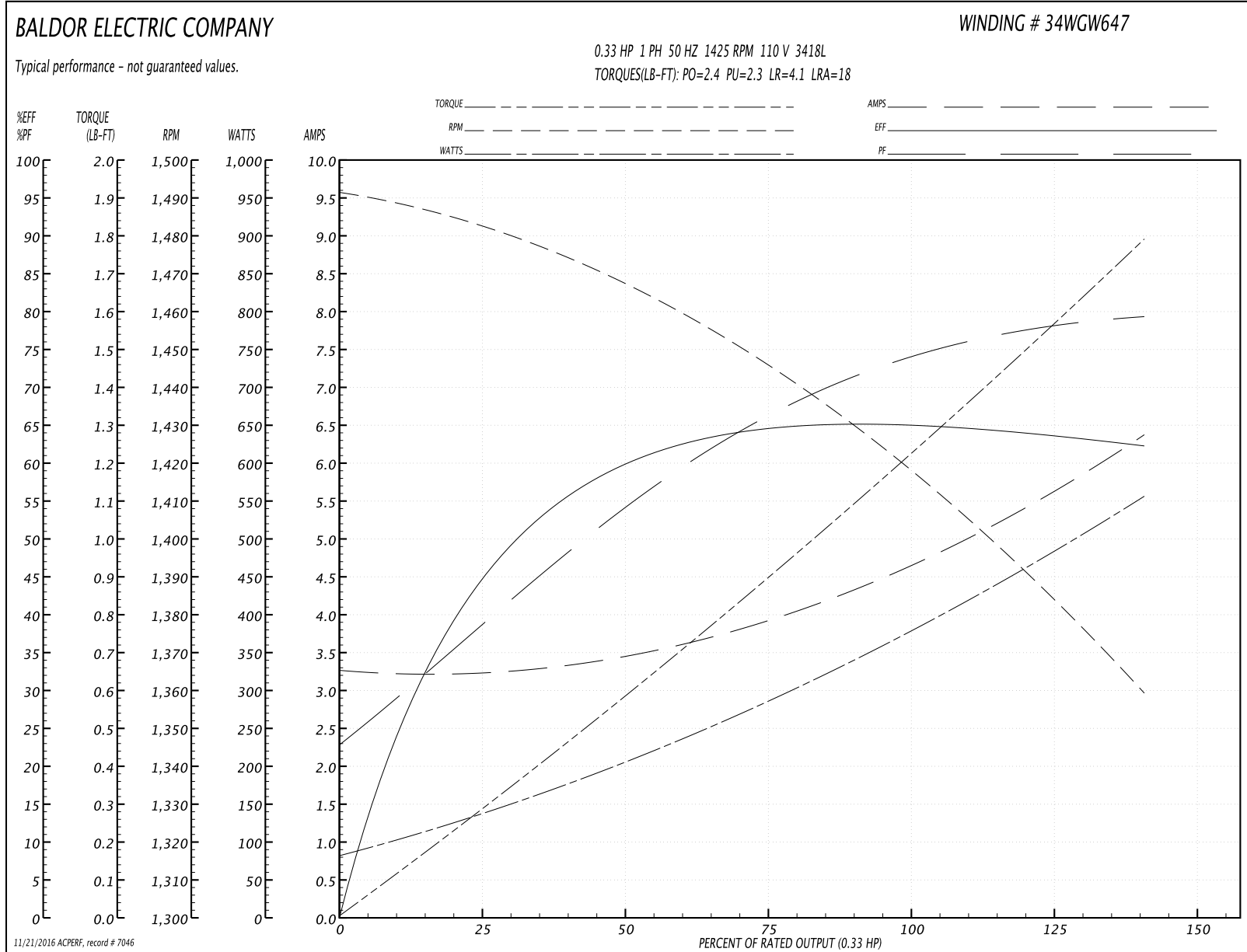
Winding: 34WGW647-R001	Type: 3418L	Enclosure: OPEN
-------------------------------	--------------------	------------------------

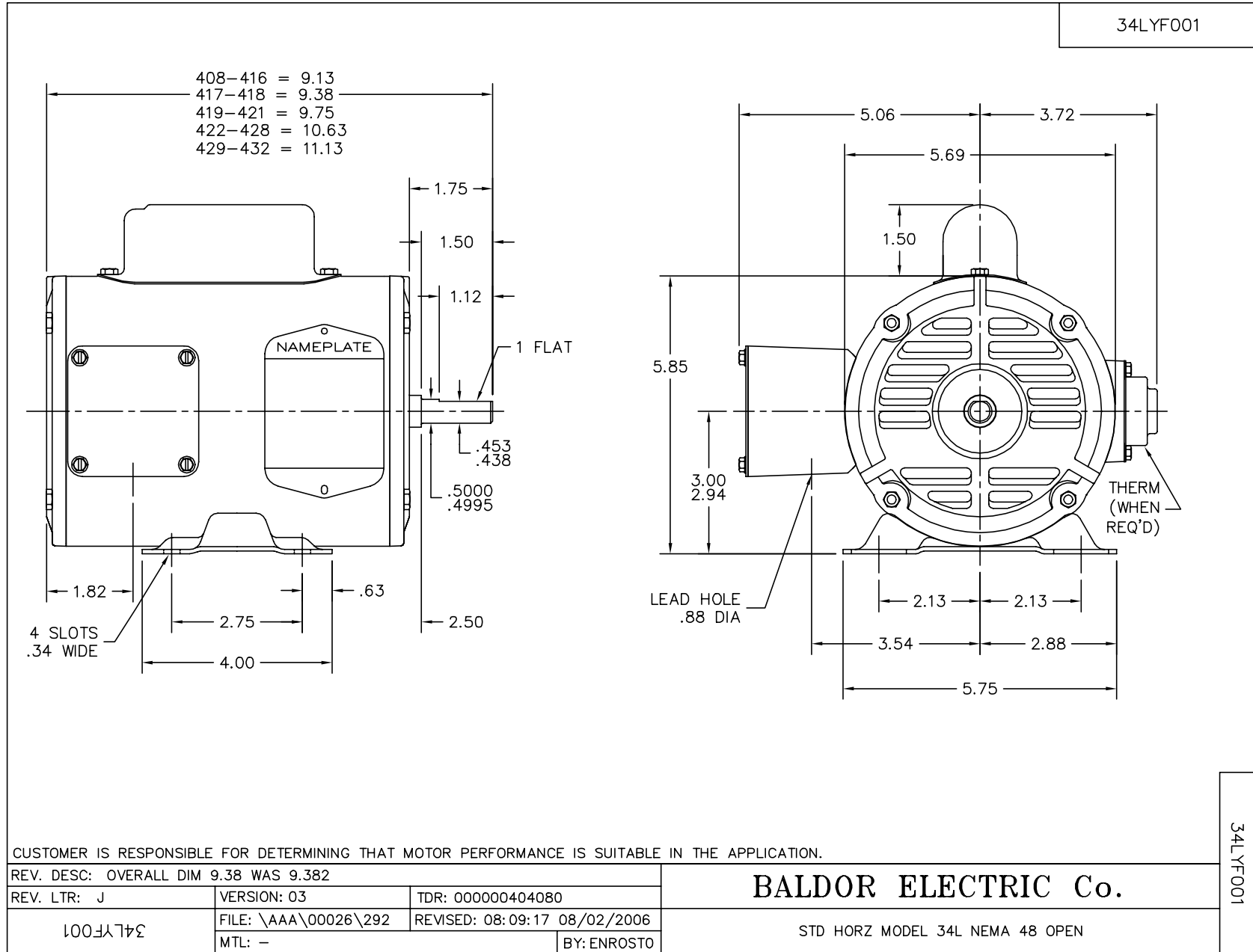
Nameplate Data				110 V, 50 Hz: Low Voltage Connection	
Rated Output (HP)	.33			Full Load Torque	1.2 LB-FT
Volts	110/220			Start Configuration	direct on line
Full Load Amps	4.6/2.3			Breakdown Torque	2.4 LB-FT
R.P.M.	1425			Pull-up Torque	2.3 LB-FT
Hz	50	Phase	1	Locked-rotor Torque	4.1 LB-FT
NEMA Design Code	N	KVA Code	F	Starting Current	18 A
Service Factor (S.F.)	1.35			No-load Current	3.2 A
NEMA Nom. Eff.	62	Power Factor	74	Line-line Res. @ 25°C	2.07 Ω A Ph 6.36 Ω B Ph
Rating - Duty	40C AMB-CONT			Temp. Rise @ Rated Load	49°C
S.F. Amps	5.6/2.8			Temp. Rise @ S.F. Load	57°C

Load Characteristics 110 V, 50 Hz, 0.33 HP

% of Rated Load	25	50	75	100	125	150	S.F.
Power Factor	39	54	66	75	81	85	0
Efficiency	43.9	58.7	64.4	66	65	61.4	0
Speed	1480	1464	1445	1423	1395	1355	0
Line amperes	3.3	3.5	4	4.5	5.3	6.5	5.6

Performance Graph at 110V, 50Hz, 0.33HP Typical performance - Not guaranteed values





CD0001



	LINE A	LINE B	JOIN
HIGH STD	1	4,5	2,3,8
HIGH OPP	1	4,8	2,3,5
LOW STD	1,3,8	2,4,5	-
LOW OPP	1,3,5	2,4,8	-

NOTES:

1. STANDARD ROTATION IS CCW FACING END OPPOSITE SHAFT EXTENSION.
2. OPTIONAL THERMOSTAT IS PROVIDED WHEN SPECIFIED.
3. MULTIPLE CAPACITORS ARE CONNECTED IN PARALLEL UNLESS OTHERWISE SPECIFIED.
4. LEAD COLORS ARE OPTIONAL. LEADS MUST ALWAYS BE NUMBERED AS SHOWN.

REV. DESC: REVISE TO SHOW OPTIONAL COLORS			
REV. LTR: D	BY: JLP	REVISED: 04/08/99 1:16	TDR: 0178636
100000		FILE: AAA00007405	MDL: -
		MTL: -	

BALDOR ELECTRIC Co.

TYPE L, DV, REV, 6 LEADS

CD0001