

BALDOR® • ***RELIANCE***

Product Information Packet

M1759T

7.5/1.9HP,1740/870RPM,3PH,60HZ,215T,3744

Part Detail							
Revision:	G	Status:	PRD/A	Change #:		Proprietary:	No
Type:	AC	Prod. Type:	3744M	Elec. Spec:	37WGS198	CD Diagram:	CD0032
Enclosure:	TEFC	Mfg Plant:		Mech. Spec:	37A001	Layout:	37LYA001
Frame:	215T	Mounting:	F1	Poles:	04/08	Created Date:	10-18-2006
Base:	RG	Rotation:	R	Insulation:	F	Eff. Date:	07-23-2015
Leads:	6#14					Replaced By:	
Literature:		Elec. Diagram:					

Nameplate NP1256L										
CAT.NO.	M1759T									
SPEC.	37A001S198									
HP	7.5/1.9									
VOLTS	460									
AMP	9.3/3.4									
RPM	1740/870									
FRAME	215T				HZ	60			PH	3
SER.F.	1.15		CODE	K	DES	A		CLASS	F	
NEMA-NOM-EFF			PF							
RATING	40C AMB-CONT									
CC									USABLE AT 208V	
DE	6307				ODE	6206				
ENCL	TEFC		SN							

Parts List		
Part Number	Description	Quantity
SA149092	SA 37A001S198	1.000 EA
RA138031	RA 37A001S198	1.000 EA
HW3200A01	3/8-16X3/4 I-BLT WELDED F/S	1.000 EA
37CB3006	37 CB CASTING W/1.38 LEAD HOLE @ 6:00	1.000 EA
37GS1000	GASKET, CONDUIT BOX STD., .06 THICK LEXI	1.000 EA
51XW2520A12	.25-20 X .75, TAPTITE II, HEX WSHR SLTD	2.000 EA
11XW1032G06	10-32 X .38, TAPTITE II, HEX WSHR SLTD U	1.000 EA
37EP3101A01	FR ENDPLATE, FOR ROUTING PURPOSES	1.000 EA
HW4500A01	1641B(ALEMITE)400 UNIV, GREASE FITT	1.000 EA
HW5100A06	W2420-025 WVY WSHR (WB)	1.000 EA
37PE3100A01	PUEP ASSEMBLY - ROUTING PUPROSES	1.000 EA
HW4500A01	1641B(ALEMITE)400 UNIV, GREASE FITT	1.000 EA
XY3118A12	5/16-18 HEX NUT DIRECTIONAL SERRATION	4.000 EA
51XB1214A20	12-14X1.25 HXWSSLD SERTYB	1.000 EA
07FH4007	PRIMED	1.000 EA
51XW1032A06	10-32 X .38, TAPTITE II, HEX WSHR SLTD S	3.000 EA
37CB4516	LIPPED LID FOR 37 FRAME NEC KOBX	1.000 EA
37GS1008SP	37 GS FOR CB LID - LEXIDE	1.000 EA
51XW0832A07	8-32 X .44, TAPTITE II, HEX WSHR SLTD SE	4.000 EA
HW2501F21	KEY, 5/16 SQ X 2.375	1.000 EA
HA7000A02	KEY RETAINER RING, 1 1/8 DIA, 1 3/8 DIA	1.000 EA
LB1115N	LABEL,LIFTING DEVICE (ON ROLLS)	1.000 EA
85XU0407S04	4X1/4 U DRIVE PIN STAINLESS	2.000 EA
MJ1000A02	GREASE, POLYREX EM EXXON (USe 4824-15A)	0.050 LB

Parts List (continued)		
Part Number	Description	Quantity
37FN3002A01SP	EXFN, PLASTIC, 9.00 OD, 1.155 ID	1.000 EA
MG1000G27	MED CHARCOAL METALLIC GREY 400-0096	0.028 GA
HA3104A17	5/16-18X13.250 T-BLT/OHIO	4.000 EA
LB1119N	WARNING LABEL	1.000 EA
LC0032	CONNECTION LABEL	1.000 EA
NP1256L	ALUM UL CSA CC	1.000 EA
G0PA1000	PKG GRP, PRINT PK1026A06	1.000 EA
MN416A01	TAG-INSTAL-MAINT no wire (1200/bx) 11/14	1.000 EA

Accessories		
Part Number	Description	Multiplier
37-3301	C FACE KIT	P1

AC Induction Motor Performance Data

Record # 22857 - Typical performance - not guaranteed values

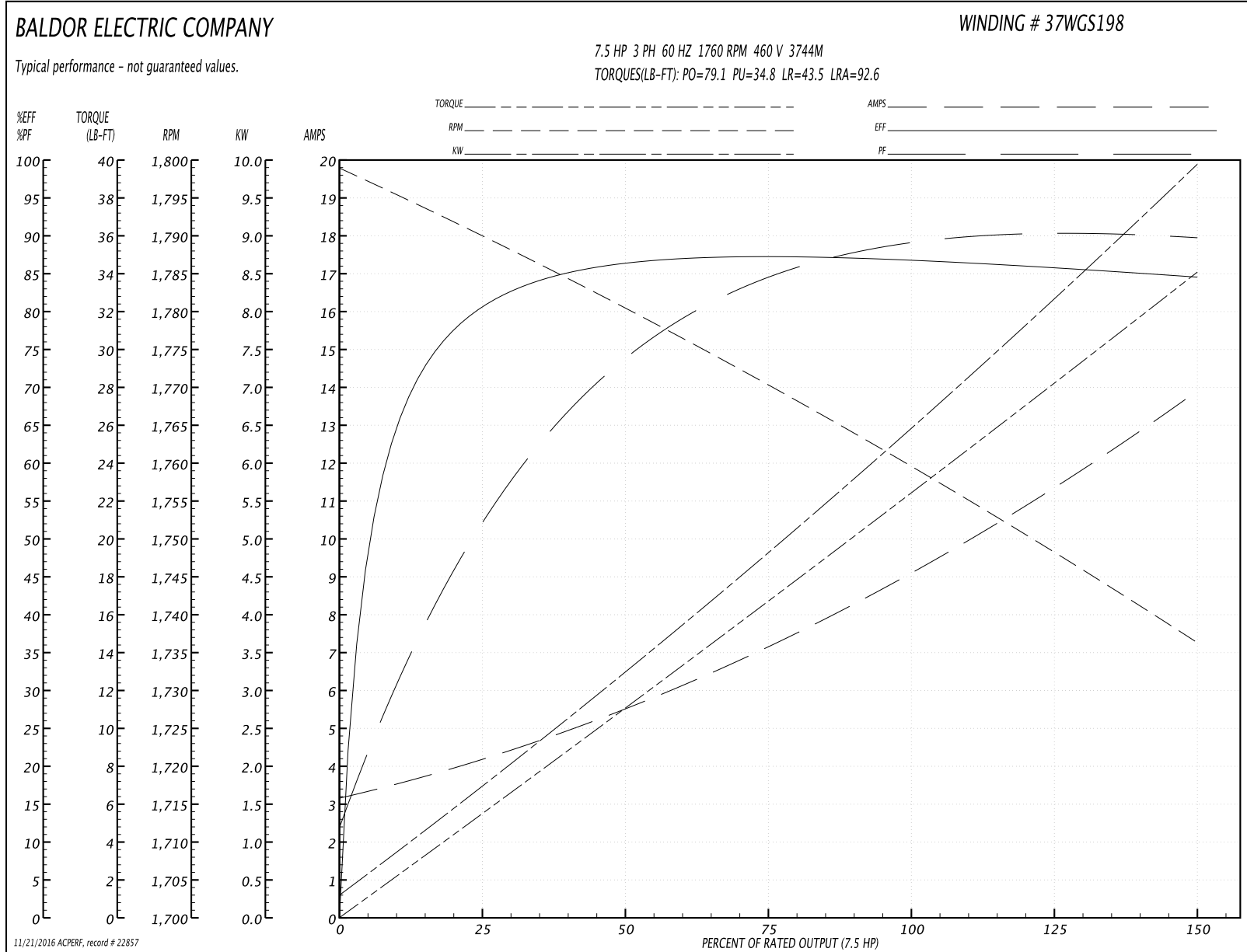
Winding: 37WGS198-R001	Type: 3744M	Enclosure: TEFC
-------------------------------	--------------------	------------------------

Nameplate Data				460 V, 60 Hz: High Speed Connection	
Rated Output (HP)	7.5/1.9			Full Load Torque	22.3 LB-FT
Volts	460			Start Configuration	direct on line
Full Load Amps	9.3/3.4			Breakdown Torque	79.1 LB-FT
R.P.M.	1740/870			Pull-up Torque	34.8 LB-FT
Hz	60	Phase	3	Locked-rotor Torque	43.5 LB-FT
NEMA Design Code	A	KVA Code	K	Starting Current	92.6 A
Service Factor (S.F.)	1.15			No-load Current	3.32 A
NEMA Nom. Eff.	0	Power Factor	0	Line-line Res. @ 25°C	1.63 Ω
Rating - Duty	40C AMB-CONT			Temp. Rise @ Rated Load	60°C
S.F. Amps				Temp. Rise @ S.F. Load	71°C

Load Characteristics 460 V, 60 Hz, 7.5 HP

% of Rated Load	25	50	75	100	125	150	S.F.
Power Factor	55	75	84	88	89	91	89
Efficiency	80.2	86.3	87	87	85.9	84.5	86.3
Speed	1790	1781	1770	1760	1749	1736	1753
Line amperes	3.96	5.39	7.14	9.16	11.4	13.8	10.5

Performance Graph at 460V, 60Hz, 7.5HP Typical performance - Not guaranteed values



AC Induction Motor Performance Data

Record # 22858 - Typical performance - not guaranteed values

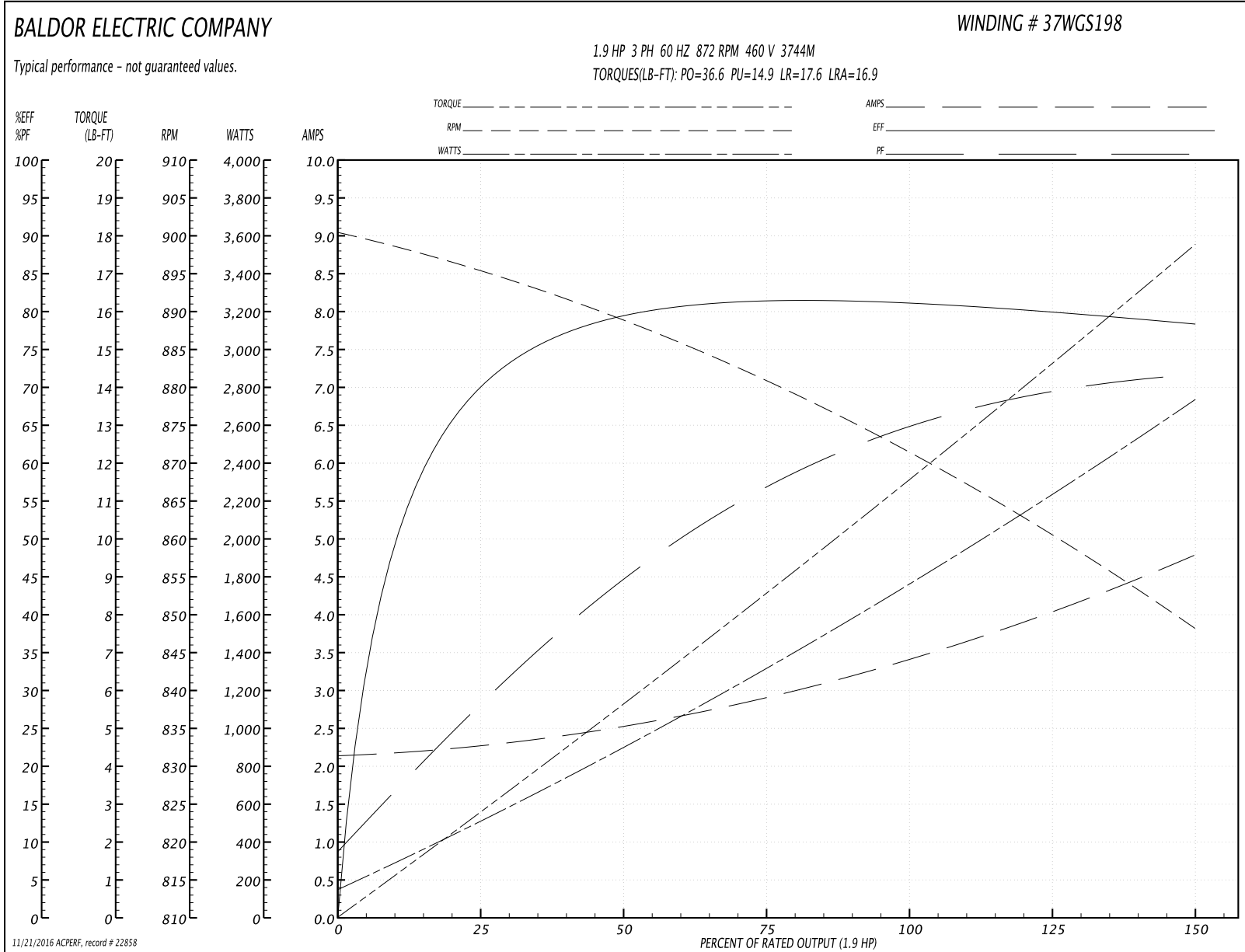
Winding: 37WGS198-R001	Type: 3744M	Enclosure: TEFC
-------------------------------	--------------------	------------------------

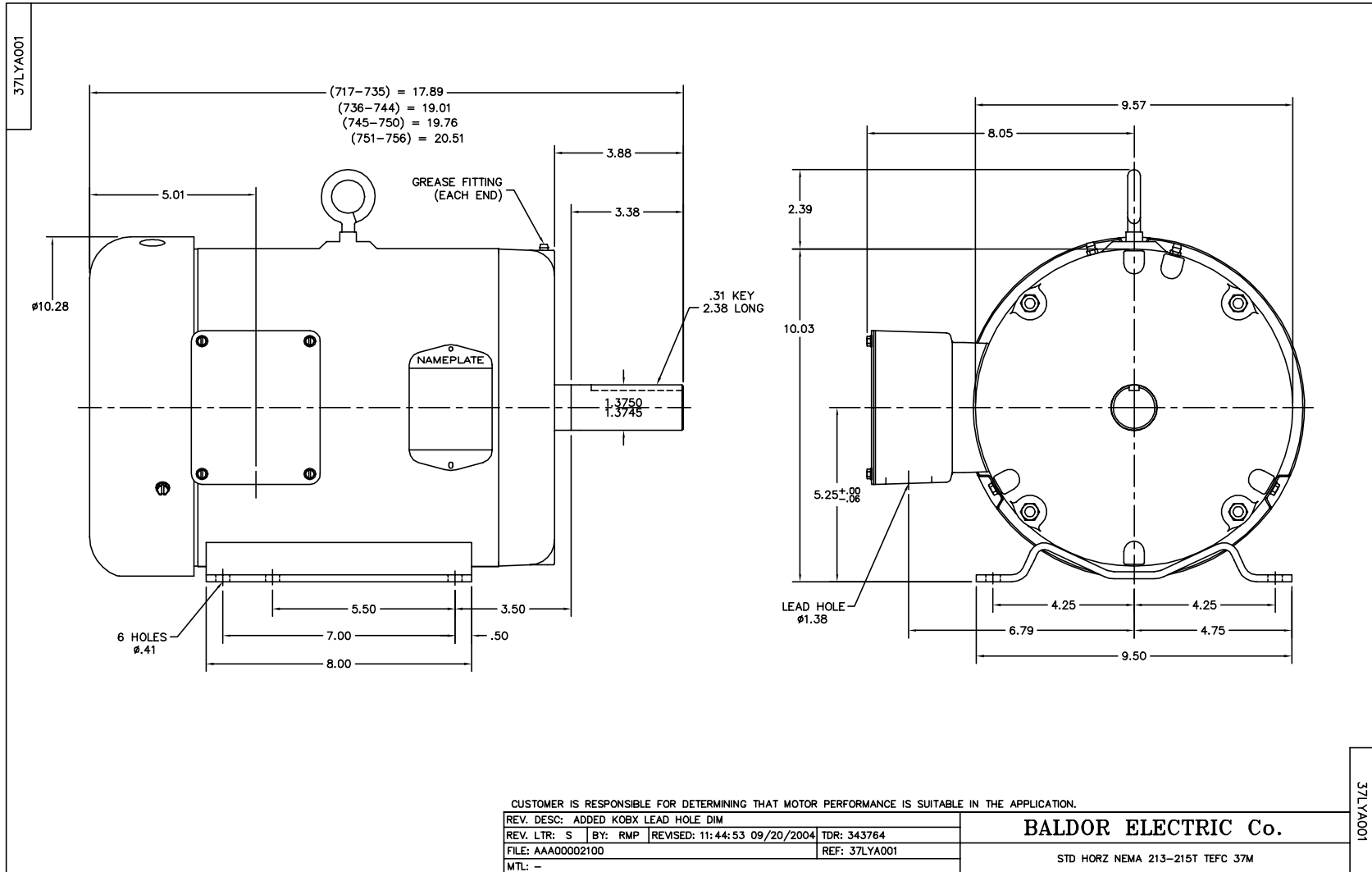
Nameplate Data				460 V, 60 Hz: Low Speed Connection	
Rated Output (HP)	7.5/1.9			Full Load Torque	11.5 LB-FT
Volts	460			Start Configuration	direct on line
Full Load Amps	9.3/3.4			Breakdown Torque	36.6 LB-FT
R.P.M.	1740/870			Pull-up Torque	14.9 LB-FT
Hz	60	Phase	3	Locked-rotor Torque	17.6 LB-FT
NEMA Design Code	A	KVA Code	K	Starting Current	16.9 A
Service Factor (S.F.)	1.15			No-load Current	2.15 A
NEMA Nom. Eff.	0	Power Factor	0	Line-line Res. @ 25°C	6.66 Ω
Rating - Duty	40C AMB-CONT			Temp. Rise @ Rated Load	42°C
S.F. Amps				Temp. Rise @ S.F. Load	48°C

Load Characteristics 460 V, 60 Hz, 1.9 HP

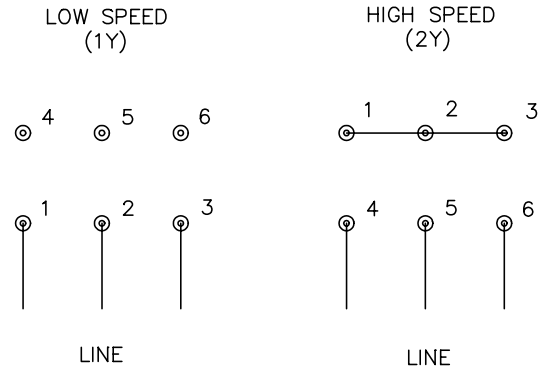
% of Rated Load	25	50	75	100	125	150	S.F.
Power Factor	30	45	57	64	69	72	67
Efficiency	70.7	78.8	81.6	81.3	80.1	78.2	80.6
Speed	899	886	880	872	861	848	865
Line amperes	2.26	2.54	2.93	3.41	4.03	4.79	3.78

Performance Graph at 460V, 60Hz, 1.9HP Typical performance - Not guaranteed values





CD0032



NOTES:

1. INTERCHANGE ANY TWO LINE LEADS TO REVERSE ROTATION.
2. OPTIONAL THERMOSTATS ARE PROVIDED WHEN SPECIFIED.
3. ACTUAL NUMBER OF INTERNAL PARALLEL CIRCUITS MAY BE A MULTIPLE OF THOSE SHOWN ABOVE.
4. LEAD COLORS ARE OPTIONAL. LEADS MUST ALWAYS BE NUMBERED AS SHOWN.

REV. DESC: REVISE TO SHOW OPTIONAL COLORS			
REV. LTR: E	BY: JLP	REVISED: 01/22/99 8:27	TDR: 0171435
CD0032		FILE: AAA00005145	MDL: -
		MTL: -	

BALDOR ELECTRIC Co.

3PH, SV, 6 LEADS, 2-SPEED 1-WINDING VARIABLE TORQUE

CD0032