

BALDOR® • RELIANCE

Product Information Packet

UCL1015

10-15 AIR OVERHP,3450RPM,1PH,60HZ,215Z,3

Part Detail							
Revision:	H	Status:	PRD/A	Change #:		Proprietary:	No
Type:	AC	Prod. Type:	3744LC	Elec. Spec:	37WGW198	CD Diagram:	CD0208
Enclosure:	OPEN	Mfg Plant:		Mech. Spec:	37M291	Layout:	37LYM291
Frame:	215Z	Mounting:	F1	Poles:	02	Created Date:	01-07-2010
Base:	RG	Rotation:	R	Insulation:	F	Eff. Date:	09-10-2015
Leads:	2#8 A PH,2#14 B PH 32" long Y					Replaced By:	
Literature:		Elec. Diagram:					

Nameplate NP1279L											
CAT.NO.	UCL1015										
SPEC.	37M291W198										
HP	10-15 AIR OVER										
VOLTS	230										
AMP	44-55										
RPM	3450										
FRAME	215Z				HZ	60		PH	1		
SER.F.	1.00			CODE	G		DES	L		CL	F
NEMA-NOM-EFF	84			PF	89						
RATING	40C AMB-CONT										
CC								USABLE AT 208V			
DE	6307				ODE	6206					
ENCL	OPEN			SN							

Nameplate NP1263L	
CAT.NO.	UCL1015
SPEC.	37M291W198
HP	10-15 AIR OVER
VOLTS	230
AMP	44-55
RPM	3450
FRAME	215Z
SER.F.	1.00
NEMA-NOM-EFF	84
RATING	40C AMB-CONT
CC	
DE	6307
ENCL	OPEN
CODE	G
PF	89
ODE	6206
HZ	60
DES	L
CL	F
PH	1
	USABLE AT 208V
SN	

Parts List		
Part Number	Description	Quantity
SA189556	SA 37M291W198	1.000 EA
RA177266	RA 37M291W198	1.000 EA
OC3040F09SP	CYL OIL CAP 40MFD/370V	1.000 EA
EC4270C06	ELEC CAP, 270-324 MFD, 250V, 2.06D X 4.	2.000 EA
HW3200A01	3/8-16X3/4 I-BLT WELDED F/S	1.000 EA
HA6011A01	ADAPTOR, MACH	1.000 EA
51XF2520A08	SCREW, HEX SER SLT HD, ZN 1/4-20 X .50 L	2.000 EA
11XW1032G06	10-32 X .38, TAPTITE II, HEX WSHR SLTD U	1.000 EA
HW3001B01	BRASS CUP WASHER, FOR #8 SCREW	1.000 EA
37FE3200A05	FR ENDPLATE, FOR ROUTING PURPOSES	1.000 EA
HW4500A19	1/4-28X1/4 SLOTTED PLUG F/S	2.000 EA
HA1104A01	RODENT SCREEN 37 FRAME 206 BRG FRONT END	1.000 EA
51XW1032A06	10-32 X .38, TAPTITE II, HEX WSHR SLTD S	4.000 EA
HW1000A10	#10 FLAT WASHER (SAE)	4.000 EA
SP1008A01	BAFFLE, MODEL 36 & 37	1.000 EA
13XF0832A08	8-32 X.50 PAN HD,SLTD, TYPE F SCREW, ZIN	2.000 EA
NS2501A01	INSULATOR, CAPACITOR	2.000 EA
35CB4802A02SP	CAPACITOR COVER, STAMPED X	2.000 EA
51XB1016A05	10-16X5/16HX WA SL SR TYB (F/S)	4.000 EA
HW5100A06	W2420-025 WVY WSHR (WB)	1.000 EA
37PE3201A03	PU ENDPLATE ASSEMBLY FOR ROUTING	1.000 EA
HW4500A19	1/4-28X1/4 SLOTTED PLUG F/S	2.000 EA
HA1104A05	RODENT SCREEN 37 FRAME 207 BRG PULLEY EN	1.000 EA
51XW1032A06	10-32 X .38, TAPTITE II, HEX WSHR SLTD S	2.000 EA

Parts List (continued)		
Part Number	Description	Quantity
HW1025A10	#10 BALANCE WASHER (SPL)	2.000 EA
10XN2520A28	1/4-20X 1 3/4 HEX HD	4.000 EA
HW1001A25	LOCKWASHER 1/4, ZINC PLT .493 OD, .255 I	4.000 EA
XY3118A12	5/16-18 HEX NUT DIRECTIONAL SERRATION	4.000 EA
HA7000A02	KEY RETAINER RING, 1 1/8 DIA, 1 3/8 DIA	1.000 EA
LB1001	LABEL, GREASE-EXXON POLYREX EM	1.000 EA
LB1115N	LABEL,LIFTING DEVICE (ON ROLLS)	1.000 EA
85XU0407S04	4X1/4 U DRIVE PIN STAINLESS	2.000 EA
MJ1000A02	GREASE, POLYREX EM EXXON (USe 4824-15A)	0.050 LB
HW2501E18	KEY, 1/4 SQ X 2.000	1.000 EA
MG1025C02	WILKOFASST SG, 787.105, TAN	0.028 GA
WD1000A15	3-520132-2 AMP FLAG (4M/RL NON-CANC/NON-	6.000 EA
LD5000A34	LEAD ASSY, ML1400DF08 W/#10 RING 12"	1.000 EA
HA3104A17	5/16-18X13.250 T-BLT/OHIO	4.000 EA
SP5172A10	TORQ MODEL 37 TYPE LC SPLIT CAPS,	1.000 EA
MP1002A24	6" X 16" .65 MIL. CLEAR PLASTIC BAG	1.000 EA
LB1119N	WARNING LABEL	1.000 EA
LC0208	CONNECTION LABEL	1.000 EA
NP1279L	ALUM FARM DUTY UL CSA CC	1.000 EA
NP1263L	AUX, GP, ALUM, CC, LASER ETCHED	1.000 EA
G0PA1000	PKG GRP, PRINT PK1026A06	1.000 EA
MN416A01	TAG-INSTAL-MAINT no wire (1200/bx) 11/14	1.000 EA

Accessories		
Part Number	Description	Multiplier
37-1404	C FACE KIT	A8

AC Induction Motor Performance Data

Record # 11817 - Typical performance - not guaranteed values

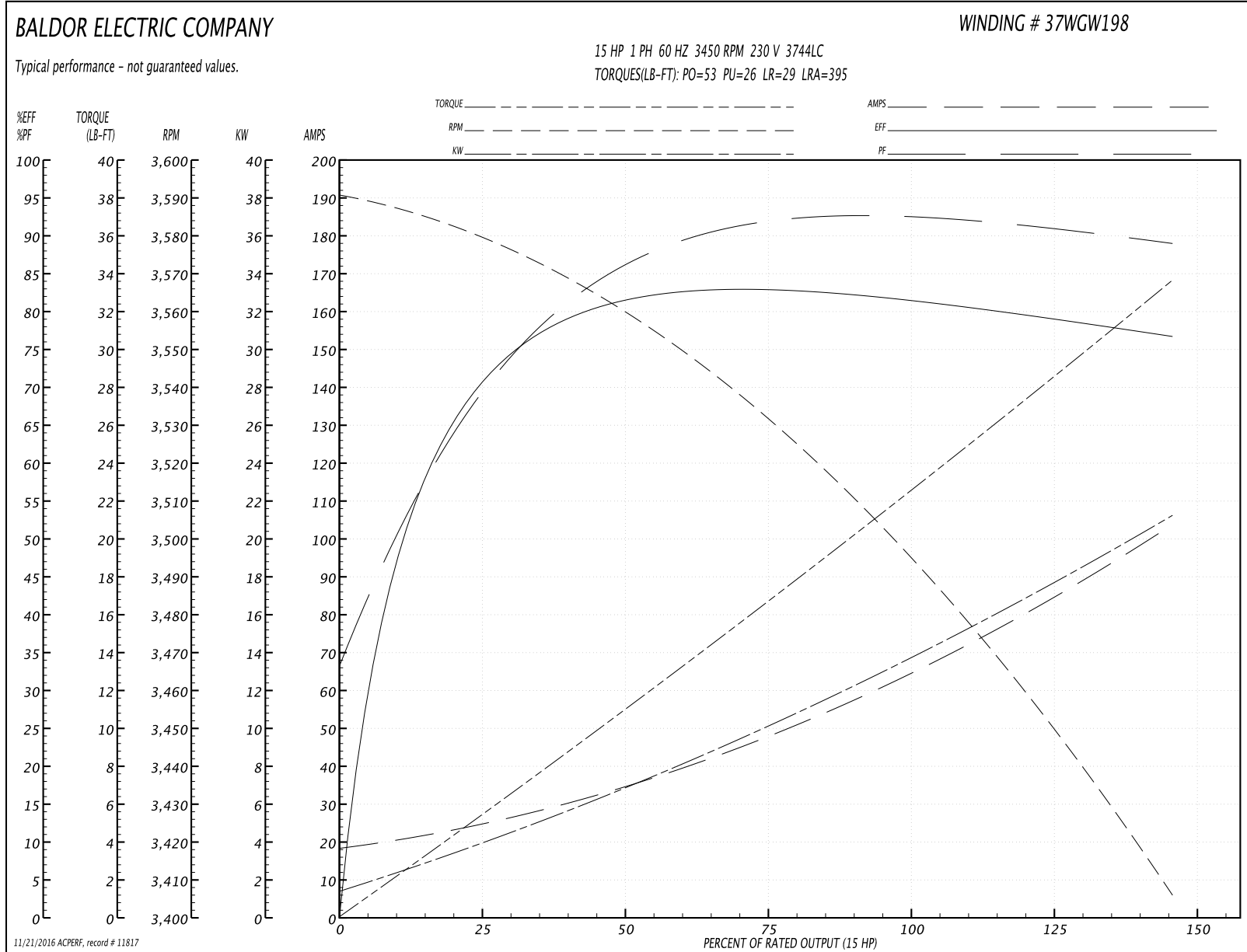
Winding: 37WGW198-R001	Type: 3744LC	Enclosure: OPAO
-------------------------------	---------------------	------------------------

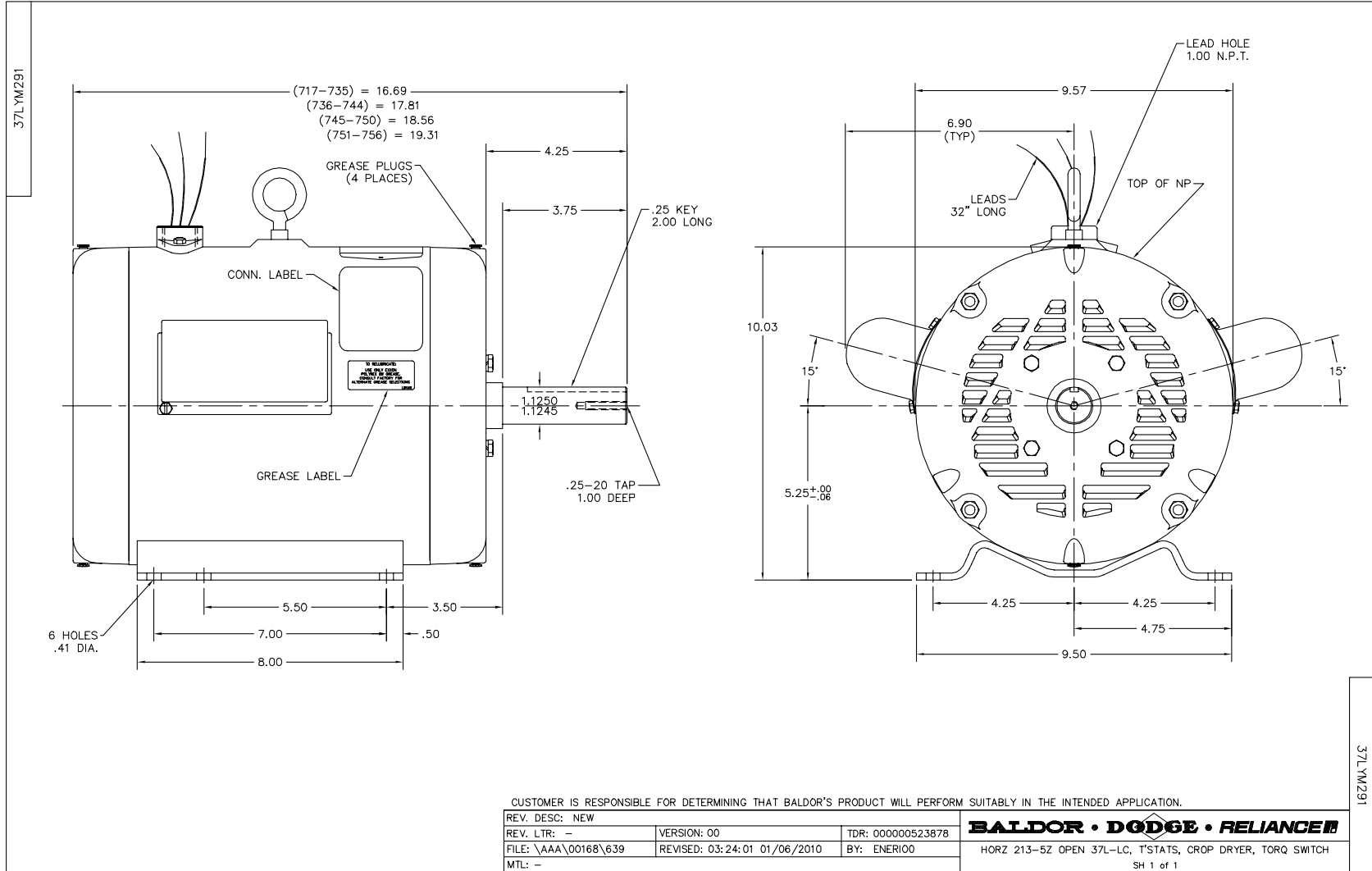
Nameplate Data				230 V, 60 Hz: Single Voltage Motor	
Rated Output (HP)	10-15 AIR OVER			Full Load Torque	22.5 LB-FT
Volts	230			Start Configuration	direct on line
Full Load Amps	44-55			Breakdown Torque	53 LB-FT
R.P.M.	3450			Pull-up Torque	26 LB-FT
Hz	60	Phase	1	Locked-rotor Torque	29 LB-FT
NEMA Design Code	L	KVA Code	G	Starting Current	395 A
Service Factor (S.F.)	1			No-load Current	18 A
NEMA Nom. Eff.	84	Power Factor	89	Line-line Res. @ 25°C	0.134 Ω A Ph 0.774 Ω B Ph
Rating - Duty	40C AMB-CONT			Temp. Rise @ Rated Load	

Load Characteristics 230 V, 60 Hz, 15 HP

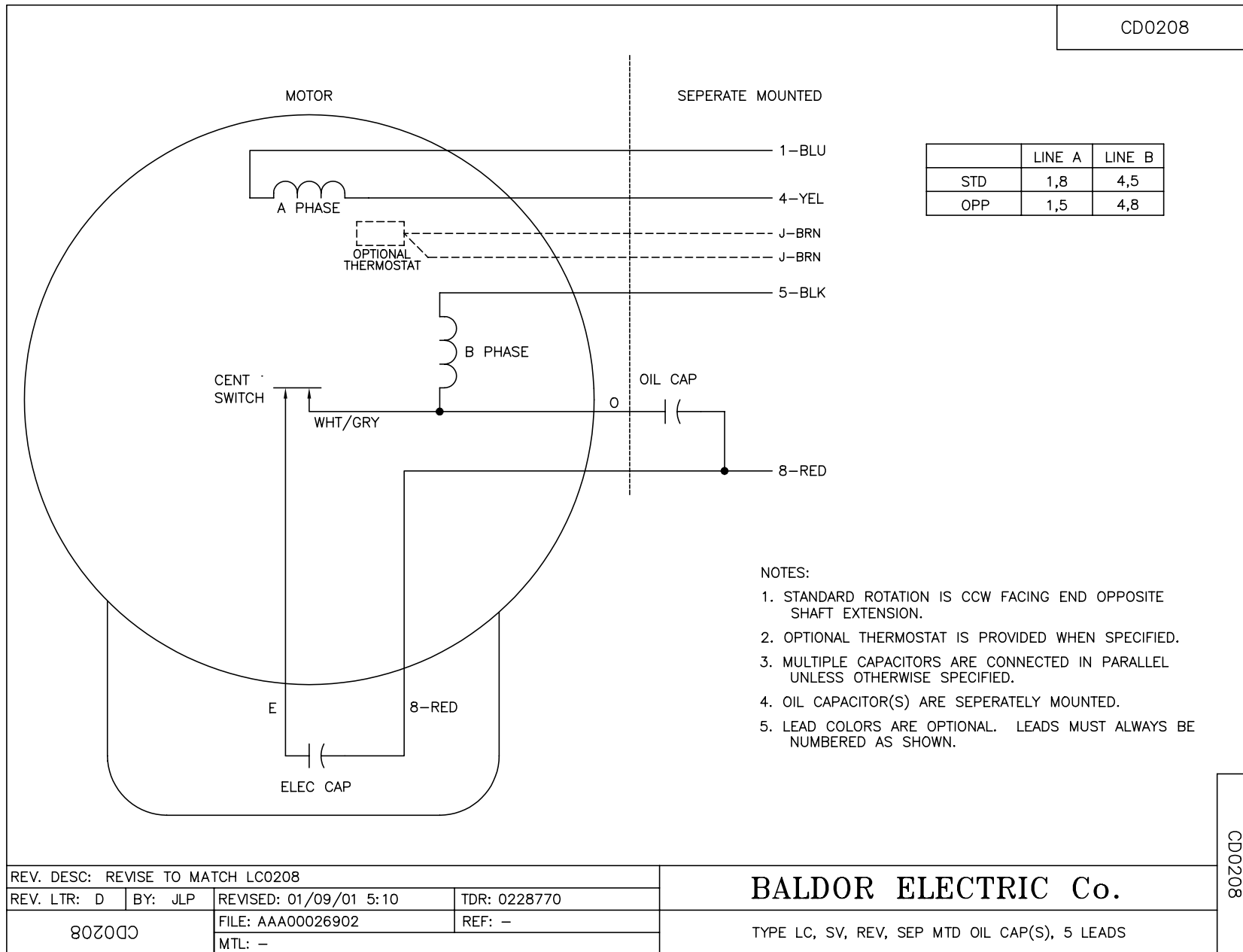
% of Rated Load	25	50	75	100	125	150
Power Factor	71	85	91	92	93	92
Efficiency	68.6	79.6	82.6	82.8	80	76
Speed	3575	3555	3531	3498	3460	3400
Line amperes	24.8	36	48.7	64	81.7	105

Performance Graph at 230V, 60Hz, 15.0HP Typical performance - Not guaranteed values





CD0208



REV. DESC: REVISE TO MATCH LC0208			
REV. LTR: D	BY: JLP	REVISED: 01/09/01 5:10	TDR: 0228770
80200		FILE: AAA00026902	REF: -
		MTL: -	

BALDOR ELECTRIC Co.

TYPE LC, SV, REV, SEP MTD OIL CAP(S), 5 LEADS

CD0208