



MARCH PUMPS

1819 PICKWICK AVE., GLENVIEW, IL 60026-1306, U.S.A
 PHONE: (847) 729-5300 - FAX: (847) 729-7062
 WWW.MARCHPUMP.COM

830-BR, 830-CI, 830-SS

DESCRIPTION: March 830 hot water booster series are centrifugal magnetic drive pumps built to handle liquid transfer in heating and cooling operations. Contact the factory for application assistance. Pumps are not self-priming, lack a suction lift, and thus require a flooded suction. Pumps cannot be run dry.

MODEL ABBREVIATIONS: BR: Bronze, CI: Cast Iron, SS: 304 Stainless steel

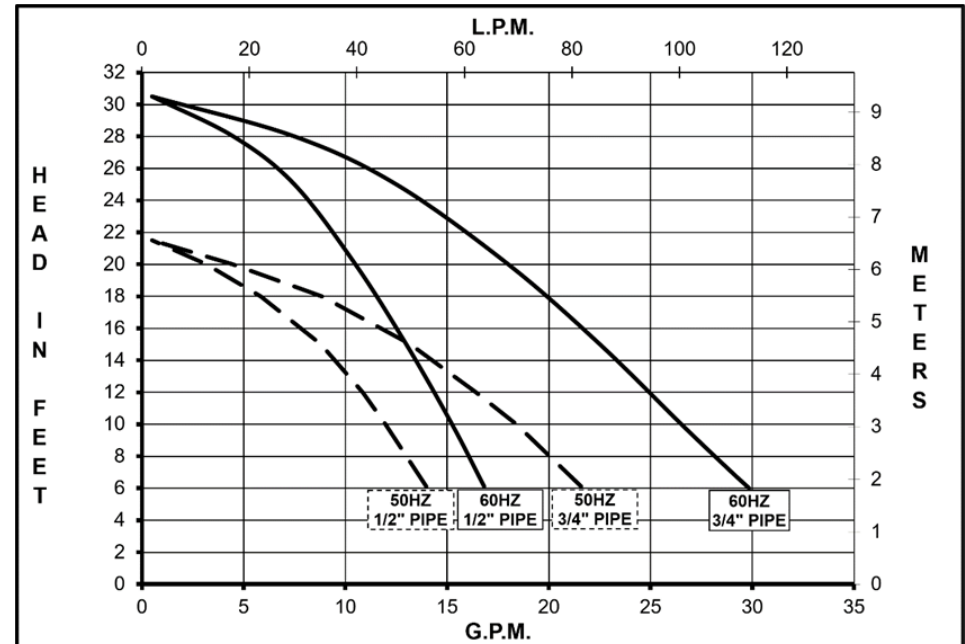
ELECTRICAL: Models have air cooled motors with a junction box for electrical connections.

INSTALLATIONS: Pumps should be installed with the pump housing arrow pointing in the direction of flow within the system. If the arrow indicating flow is not in the direction required, remove the socket head housing screws holding the housing to the motor bracket and rotate the housing assembly as required. Replace the screws and tighten. The pump is composed of a wet end assembly which can be separated by unscrewing the socket head housing screws. The pump will then separate into 2 parts. The liquid will be contained within the wet end assembly unless the flat head connecting screws on the rear housing are loosened.

GENERAL SAFETY INFORMATION: Follow all local safety codes & the Occupational Safety and Health Act (OSHA). Make certain that the power source conforms to the requirements of your equipment. Always disconnect power source before performing any work on or near the electric motor. Caution must be exercised to relieve any pressure in the system & in draining hot liquid from the pump or the system. March cannot recommend the 830 Series out of bronze where the liquid is used for human consumption per California Law due to the presence of lead.

DISASSEMBLY AND REASSEMBLY: The motor can be removed from the wet end assembly without draining the liquid from the system. To do so remove four socket head housing screws and slide the motor assembly away. If parts inside the wet end assembly must be removed, isolate the pump or drain the system. When the system is drained and cool, remove the four flat head connecting screws from the rear of the housing. The rear housing can now be removed. Remaining pump parts can be removed. Replace any worn or damaged parts. Replace the gasket anytime the rear housing is removed.

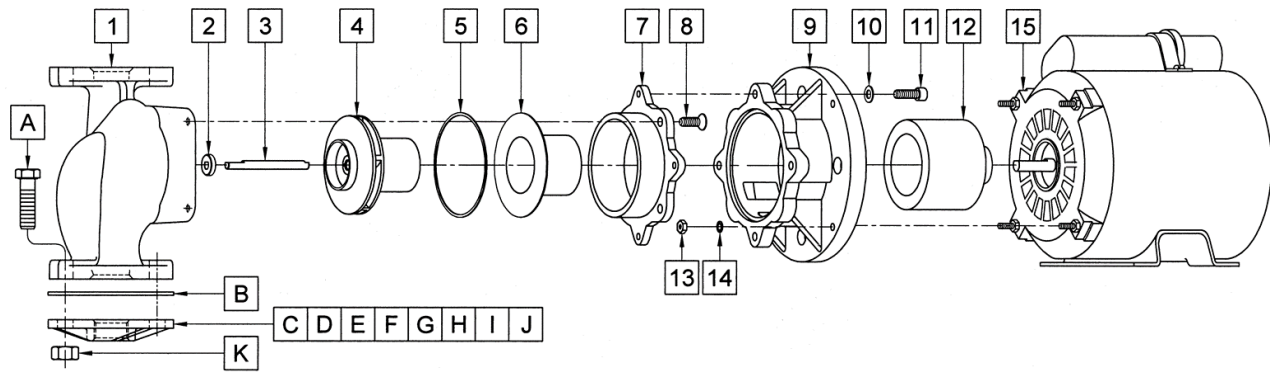
LIMITED WARRANTY: March pumps are guaranteed only against defects in workmanship or materials for a period of one year from date of manufacture pumping water. For the complete warranty and to register online go to www.marchpump.com/warranty-registration



| Specifications | | 830-BR | 830-CI | 830-SS |
|------------------------|-----|-------------------|-------------------|-------------------|
| Product | 1Ph | 0175-0005-0100 | 0175-0005-0200 | 0175-0094-0100 |
| Inlet-Outlet | | Flange-Flange | Flange-Flange | Flange-Flange |
| Max Internal Pressure | | 150PSI (1034 kPa) | 150PSI (1034 kPa) | 150PSI (1034 kPa) |
| Max Liquid Temperature | | 250F (121C) | 250F (121C) | 250F (121C) |

| Model | 60Hz | | | | | | | | | | | 50Hz | | | | | | | | | | | Packed Weight |
|--------|----------|-------|----------|------|-----|------------|---------|---------|-----|-------|------|----------|------|----------|-----|-----|------------|---------|---------|-----|-------|------|---------------|
| | Max Flow | | Max Head | | | Electrical | | | | | | Max Flow | | Max Head | | | Electrical | | | | | | |
| | GPM | LPM | FT | PSI | M | Ph | V | A | HP | kW | RPM | GPM | LPM | Feet | PSI | M | Ph | V | A | HP | kW | RPM | Pounds |
| 830-BR | 30 | 113.5 | 30.5 | 13.2 | 9.3 | 1 | 115/230 | 2.7/1.4 | 1/5 | 0.149 | 3450 | 21.5 | 81.3 | 21.3 | 9.2 | 6.5 | 1 | 115/230 | 2.9/1.4 | 1/5 | 0.149 | 2850 | 21.5 |
| 830-CI | 30 | 113.5 | 30.5 | 13.2 | 9.3 | 1 | 115/230 | 2.7/1.4 | 1/5 | 0.149 | 3450 | 21.5 | 81.3 | 21.3 | 9.2 | 6.5 | 1 | 115/230 | 2.9/1.4 | 1/5 | 0.149 | 2850 | 21 |
| 830-SS | 30 | 113.5 | 30.5 | 13.2 | 9.3 | 1 | 115/230 | 2.7/1.4 | 1/5 | 0.149 | 3450 | 21.5 | 81.3 | 21.3 | 9.2 | 6.5 | 1 | 115/230 | 2.9/1.4 | 1/5 | 0.149 | 2850 | 21.5 |

All specifications & data are based on pumping water & are intended as a guideline only. Specifications may vary with different motors.



| 830-BR | | | | 830-CI | | | |
|--------|----------------|---------|---|---|----------------|---------|---|
| Item | Part Number | QTY REQ | Description | Item | Part Number | QTY REQ | Description |
| 1 | 0821-0064-0000 | 1 | Flanged Pump Housing (Bronze) | 1 | 0821-0025-0001 | | Flanged Pump Housing (Cast Iron) |
| 2 | 0821-0079-1000 | 1 | Thrust Washer (Ceramic) | 2 | 0821-0079-1000 | 1 | Thrust Washer (Ceramic) |
| 3 | 0821-0036-1000 | 1 | Shaft (303 Stainless Steel) | 3 | 0821-0036-1000 | 1 | Shaft (303 Stainless Steel) |
| | 0175-0073-0200 | 1 | Impeller w/Bushing (Ryton/Teflon/Carbon) and Magnet Shell (304 Stainless Steel) | 4 | 0175-0073-0200 | 1 | Impeller w/Bushing (Ryton/Teflon/Carbon) and Magnet Shell (304 Stainless Steel) |
| 5 | 1043-0002-1000 | 1 | 2.873"ID x 0.047" Thick Gasket (Nitrile/Fibre) | 5 | 1043-0002-1000 | 1 | 2.873"ID x 0.047" Thick Gasket (Nitrile/Fibre) |
| 6 | 0821-0035-0100 | 1 | Rear Housing (304 Stainless Steel) | 6 | 0821-0035-0100 | 1 | Rear Housing (304 Stainless Steel) |
| 7 | 0821-0044-0000 | 1 | Housing Connecting Ring (Aluminum) | 7 | 0821-0044-0000 | 1 | Housing Connecting Ring (Aluminum) |
| 8 | 1043-0009-1000 | 4 | 1/4"-20 x 3/4"Lg. Flat Head Connecting Screw (Steel) | 8 | 1043-0009-1000 | 4 | 1/4"-20 x 3/4"Lg. Flat Head Connecting Screw (Steel) |
| 9 | 0175-0027-1000 | 1 | Motor Bracket (Plastic) | 9 | 0175-0027-1000 | 1 | Motor Bracket (Plastic) |
| 10 | 0155-0021-1000 | 4 | 1/2"OD Washer (Stainless) | 10 | 0155-0021-1000 | 4 | 1/2"OD Washer (Stainless) |
| 11 | 0804-0052-1000 | 4 | 1/4"-20 x 3/4" LG. Socket Head Housing Screw (Steel) | 11 | 0804-0052-1000 | 4 | 1/4"-20 x 3/4" LG. Socket Head Housing Screw (Steel) |
| 12 | 0151-0061-0200 | 1 | Drive Magnet | 12 | 0151-0061-0200 | 1 | Drive Magnet |
| 13 | 0410-0039-1000 | 4 | #8-32 Hex Nut (Nickel Plated Brass) | 13 | 0410-0039-1000 | 4 | #8-32 Hex Nut (Nickel Plated Brass) |
| 14 | 0620-0010-1000 | 4 | #8 Lock Washer (Stainless) | 14 | 0620-0010-1000 | 4 | #8 Lock Washer (Stainless) |
| 15 | 0175-0087-1000 | 1 | Motor, 1Ph, 115/230V, 50/60Hz | 15 | 0175-0087-1000 | 1 | Motor, 1Ph, 115/230V, 50/60Hz |
| 830-SS | | | | Options | | | |
| 1 | 0821-0116-0010 | 1 | Flanged Pump Housing (304 Stainless Steel) | A | 0804-0054-1000 | 4 | 7/16"-14 x 1-1/2"Lg. Hexe Head Screw (Steel) |
| 2 | 0821-0079-1000 | 1 | Thrust Washer (Ceramic) | B | 0821-0105-1000 | 2 | Gasket, Flange (EPDM) |
| 3 | 0821-0036-1000 | 1 | Shaft (303 Stainless Steel) | C | 0821-0069-000 | 2 | 3/4" Flange (Bronze) |
| 4 | 0175-0073-0200 | 1 | Impeller w/Bushing (Ryton/Teflon/Carbon) and Magnet Shell (304 Stainless Steel) | D | 0821-0065-0000 | 2 | 1" Flange (Bronze) |
| 5 | 1043-0002-1000 | 1 | 2.873"ID x 0.047" Thick Gasket (Nitrile/Fibre) | E | 0821-0072-0000 | 2 | 1-1/4" Flange (Bronze) |
| 6 | 0821-0035-0100 | 1 | Rear Housing (304 Stainless Steel) | F | 0821-0066-0000 | 2 | 1-1/2" Flange (Bronze) |
| 7 | 0821-0044-0000 | 1 | Housing Connecting Ring (Aluminum) | G | 0804-0047-0000 | 2 | 3/4" Flange (Steel) |
| 8 | 1043-0009-1000 | 4 | 1/4"-20 x 3/4"Lg. Flat Head Connecting Screw (Steel) | H | 0821-0045-0000 | 2 | 1" Flange (Steel) |
| 9 | 0175-0027-1000 | 1 | Motor Bracket (Plastic) | I | 0821-0048-0000 | 2 | 1-1/4" Flange (Steel) |
| 10 | 0155-0021-1000 | 4 | 1/2"OD Washer (Stainless) | J | 0821-0049-0000 | 2 | 1-1/2" Flange (Cast Iron) |
| 11 | 0804-0052-1000 | 4 | 1/4"-20 x 3/4" LG. Socket Head Housing Screw (Steel) | K | 0804-0055-1000 | 4 | 7/16"-14 Hex Nut (Steel) |
| 12 | 0151-0061-0200 | 1 | Drive Magnet | Materials in contact with the liquid: | | | |
| 13 | 0410-0039-1000 | 4 | #8-32 Hex Nut (Nickel Plated Brass) | 830-BR: Bronze, Ceramic, Nitrile/Fibre, 304SS, 303SS, Ryton/Teflon/Carbon | | | |
| 14 | 0620-0010-1000 | 4 | #8 Lock Washer (Stainless) | 830-CI: Cast Iron, Ceramic, Nitrile/Fibre, 304SS, 303SS, Ryton/Teflon/Carbon | | | |
| 15 | 0175-0087-1000 | 1 | Motor, 1Ph, 115/230V, 50/60Hz | 830-SS: 304SS, Ceramic, Nitrile/Fibre, 303SS, Ryton/Teflon/Carbon | | | |

NOTE: Contact Factory for other materials and/or parts not listed.

Special voltage motors are available upon special order.

Order Online: www.PumpCatalog.com