



MARCH PUMPS

1819 PICKWICK AVE., GLENVIEW, IL 60026-1306, U.S.A

BEER PUMPS 815 Series

DESCRIPTION:

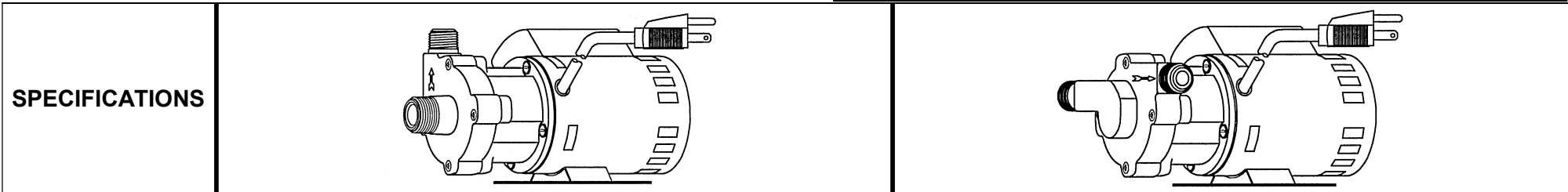
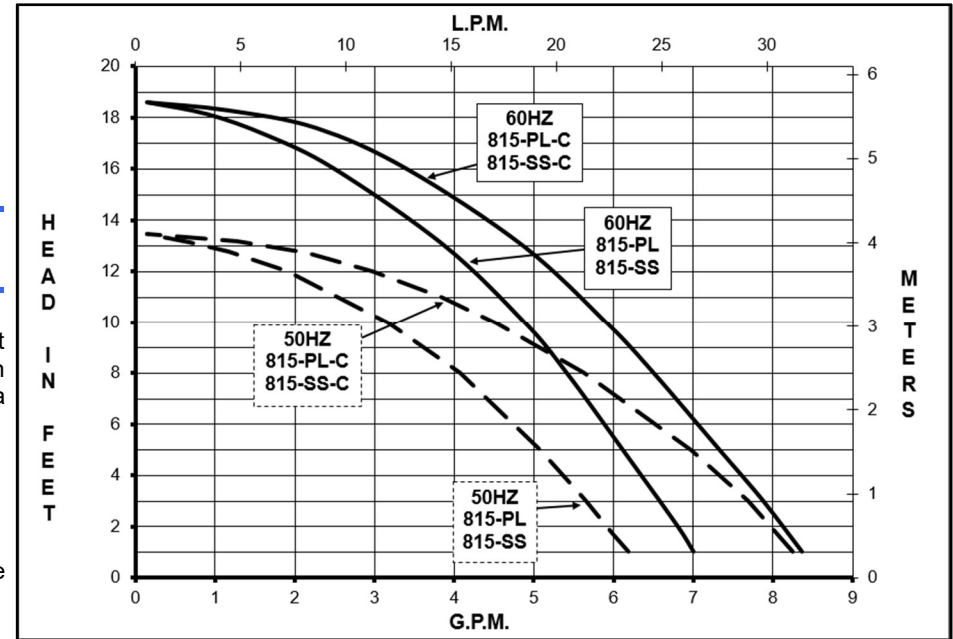
The March beer pump is a non-self-priming magnetic drive unit built specifically to handle hot wort and water. The unit requires liquid being pumped to lubricate the internal parts. If the pump is run dry for a period of time the impeller and shaft may become damaged. To regulate the flow use a valve on the discharge/outlet.

ELECTRICAL:

All models have an air cooled 1 phase motor and have a 6 foot cord with plug.

LIMITED WARRANTY:

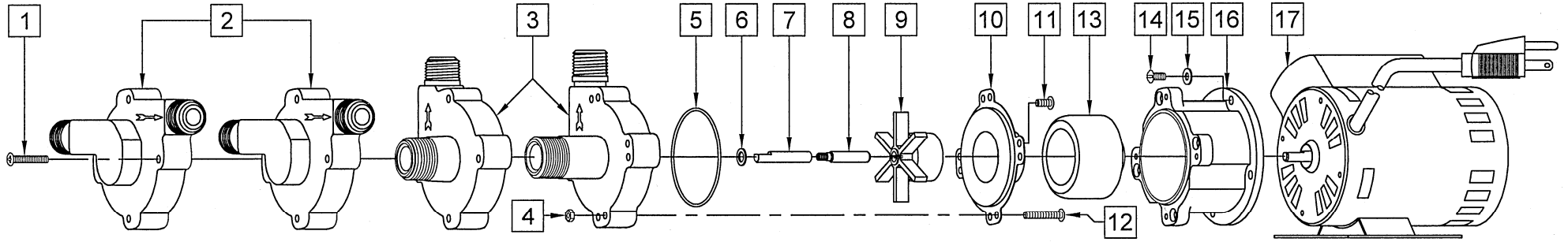
March pumps are guaranteed only against defects in workmanship or materials for a period of one year from date of manufacture pumping water.



| SPECIFICATIONS | 815-PL-C | | | 815-SS-C | | | 815-PL | | | 815-SS | | |
|--------------------------|---------------------------|----------------------|---------------|-------------------------|----------------|---------------|---------------------|----------------|---------------|---------------------|----------------|---------------|
| | Product # | 115 V 0809-0188-0100 | | | 0809-0198-0100 | | | 0809-0196-0600 | | | 0809-0196-0700 | |
| | Polysulfone, Center Inlet | | | Stainless, Center Inlet | | | Polysulfone, Inline | | | Stainless, Inline | | |
| UNITS | 60 Hz | 50 Hz | | 60 Hz | 50 Hz | | 60 Hz | 50 Hz | | 60 Hz | 50 Hz | |
| Max Flow | 8 gpm | 30 lpm | | 8 gpm | 30 lpm | | 7 gpm | 22.7 lpm | | 7 gpm | 22.7 lpm | |
| Max Head | 18.6 ft. / 8.05 psi | 4.1 m | | 18.6 ft. / 8.05 psi | 4.1 m | | 18.6 ft. / 8.05 psi | 4.1 m | | 18.6 ft. / 8.05 psi | 4.1 m | |
| Inlet | 3/8" FPT & 3/4" MPT | | | 3/4" MPT | | | 1/2" MPT | | | 1/2" MPT | | |
| Outlet | 1/2" MPT | | | 1/2" MPT | | | 1/2" MPT | | | 1/2" MPT | | |
| Max Internal Pressure | 50 psi / 3.4 bar | | | 150 psi / 10 bar | | | 50 psi / 3.4 bar | | | 150 psi / 10 bar | | |
| Max Liquid Temperature | 250 °F / 121 °C | | | 250 °F / 121 °C | | | 250 °F / 121 °C | | | 250 °F / 121 °C | | |
| Packed Weight | 5 lbs / 2.3 kg | | | 6 lbs / 2.7 kg | | | 5 lbs / 2.3 kg | | | 6 lbs / 2.7 kg | | |
| ELECTRICAL 60 Hz | A | Hp | Rpm | A | Hp | Rpm | A | Hp | Rpm | A | Hp | Rpm |
| 115 V | .5 | 1/25 | 3450 | .5 | 1/25 | 3450 | .5 | 1/25 | 3450 | .5 | 1/25 | 3450 |
| ELECTRICAL 50 Hz | A | kW | Rpm | A | kW | Rpm | A | kW | Rpm | A | kW | Rpm |
| 115 V | .4 | 0.022 | 2850 | .4 | 0.022 | 2850 | .4 | 0.022 | 2850 | .4 | 0.022 | 2850 |
| Overall Pump Size | Height | Width | Length | Height | Width | Length | Height | Width | Length | Height | Width | Length |
| Inches | 4.38 | 4.18 | 8.25 | 4.50 | 4.18 | 8.69 | 4.37 | 4.88 | 7.55 | 4.37 | 4.88 | 7.57 |
| cm | 11.1 | 10.6 | 20.9 | 11.4 | 10.6 | 22.0 | 11.0 | 12.3 | 19.1 | 11.0 | 12.3 | 19.1 |

All specifications & data are based on pumping water & are intended as a guideline only. Specifications may vary with different motors.

PARTS LIST



| # | DESCRIPTION | MATERIAL | | SIZE (Inches) | QTY. | PART # | |
|----|------------------------------|-----------|--------------------|-----------------------|------|----------------|----------------|
| | | 815-SS-C | 815-SS | | | 815-SS-C | 815-SS |
| 1 | Screw | Stainless | Stainless | #8-32 x 1 Lg. | 4 | 0809-0205-1000 | 0809-0205-1000 |
| 2 | Pump Housing (Inline) | | Stainless | Inline Inlet & Outlet | 1 | | 0809-0211-0010 |
| 3 | Pump Housing (Center Inlet) | Stainless | | Center Inlet | 1 | 0809-0150-0010 | |
| 4 | Hex Nut | | Stainless | #8-32 | 4 | 0991-0004-1000 | |
| 5 | "O" Ring | | Silicone | 0.070 CS x 2.441 ID | 1 | 0809-0165-1000 | 0809-0165-1000 |
| 6 | Thrust Washer | | Teflon | | 1 | | 0809-0043-1000 |
| 8 | *Shaft | | Stainless | Left-Hand Thread | 1 | 0809-0214-1000 | 0809-0214-1000 |
| 9 | Impeller | | Ryton/Teflon/Glass | 2-5/32 Dia. | 1 | | 0809-0107-0200 |
| 10 | Rear Housing | | Stainless | | 1 | | 0809-0012-1000 |
| 11 | Screw | | Stainless | #8-32 x 3/8 Lg. | 4 | | 0135-0040-1000 |
| 12 | Screw | | Stainless | #8-32 x 1 Lg. | 4 | 0809-0205-1000 | |
| 13 | Drive Magnet | | | | 1 | | 0125-0083-0100 |
| 14 | Screw | | Stainless | #8-32 x 3/8 Lg. | 4 | | 0135-0040-1000 |
| 15 | Washer | | Stainless | | 4 | | 0858-0004-1000 |
| 16 | Motor Bracket | | Plastic | | 1 | | 0809-0058-1000 |
| 17 | Motor 115 V, 50/60 Hz w/base | | | 6 foot cord w/plug | 1 | | 0809-0218-1000 |

| # | DESCRIPTION | MATERIAL | | SIZE (Inches) | QTY. | PART # | |
|----|------------------------------|-------------|--------------------|-----------------------|------|----------------|----------------|
| | | 815-PL-C | 815-PL | | | 815-PL-C | 815-PL |
| 1 | Screw | Steel | Steel | #8-32 x 1 Lg. | 4 | 0923-0003-1000 | 0923-0003-1000 |
| 2 | Pump Housing (Inline) | | Polysulfone | Inline Inlet & Outlet | 1 | | 0809-0079-0100 |
| 3 | Pump Housing (Center Inlet) | Polysulfone | | Center Inlet | 1 | 0809-0179-0100 | |
| 5 | "O" Ring | | Silicone | 1/16 CS x 2-3/8 ID | 1 | | 0809-0027-1000 |
| 6 | Thrust Washer | | Teflon | | 1 | | 0809-0043-1000 |
| 7 | *Shaft | | Stainless | "D" Flat | 1 | | 0809-0161-1000 |
| 9 | Impeller | | Ryton/Teflon/Glass | 2-5/32 Dia. | 1 | | 0809-0107-0200 |
| 10 | Rear Housing | | Stainless | | 1 | | 0809-0012-1000 |
| 11 | Screw | | Stainless | #8-32 x 3/8 Lg. | 4 | | 0135-0040-1000 |
| 13 | Drive Magnet | | | | 1 | | 0125-0083-0100 |
| 14 | Screw | | Stainless | #8-32 x 3/8 Lg. | 4 | | 0135-0040-1000 |
| 15 | Washer | | Stainless | | 4 | | 0858-0004-1000 |
| 16 | Motor Bracket | | Plastic | | 1 | | 0809-0058-1000 |
| 17 | Motor 115 V, 50/60 Hz w/base | | | 6 foot cord w/plug | 1 | | 0809-0218-1000 |

NOTE: Contact Factory for other materials and/or parts not listed.

0750-0976-1000 R10

*Check shaft type before ordering replacement parts.