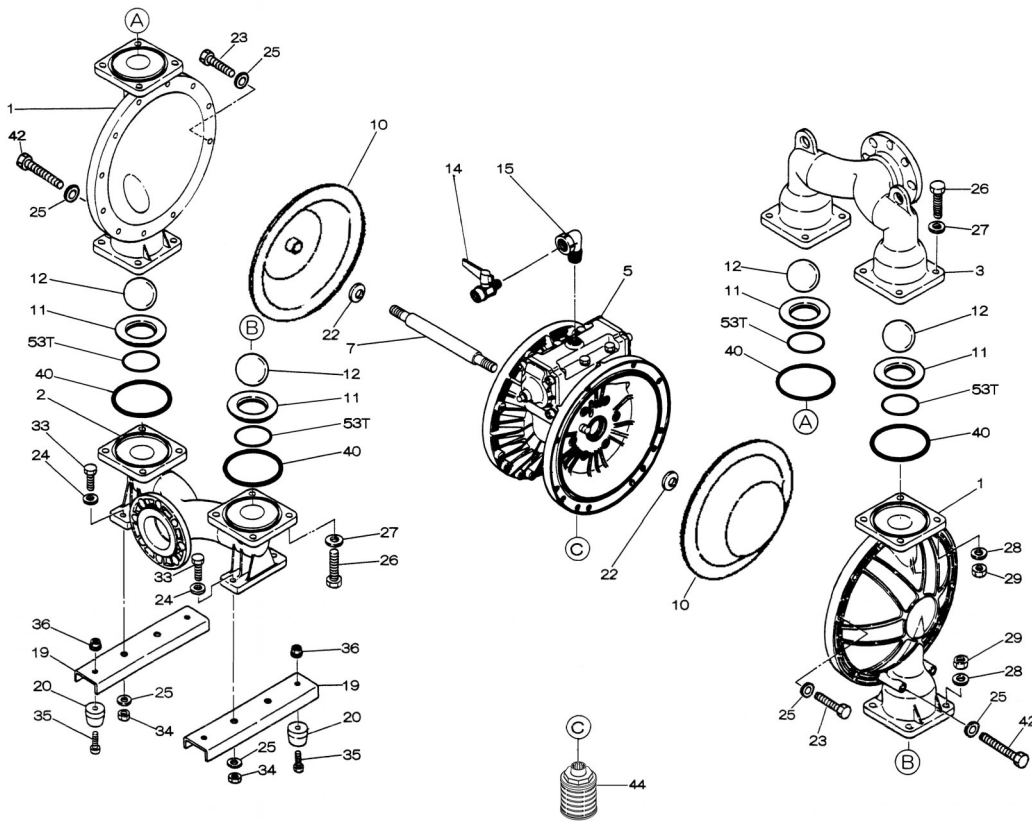
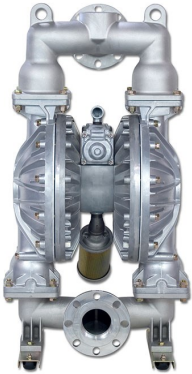


EXPLODED VIEW & PARTS LISTING

Model: NDP-80BAU
Model#: 852240-U

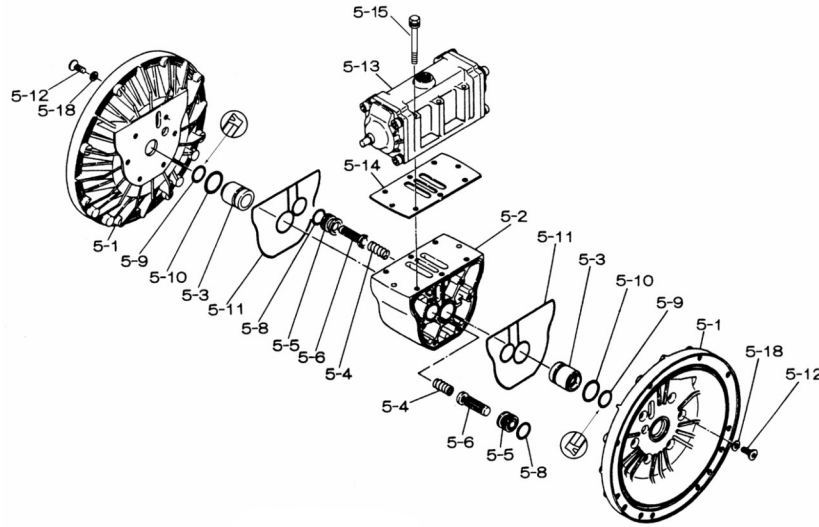


Air Operated Double Diaphragm Pump

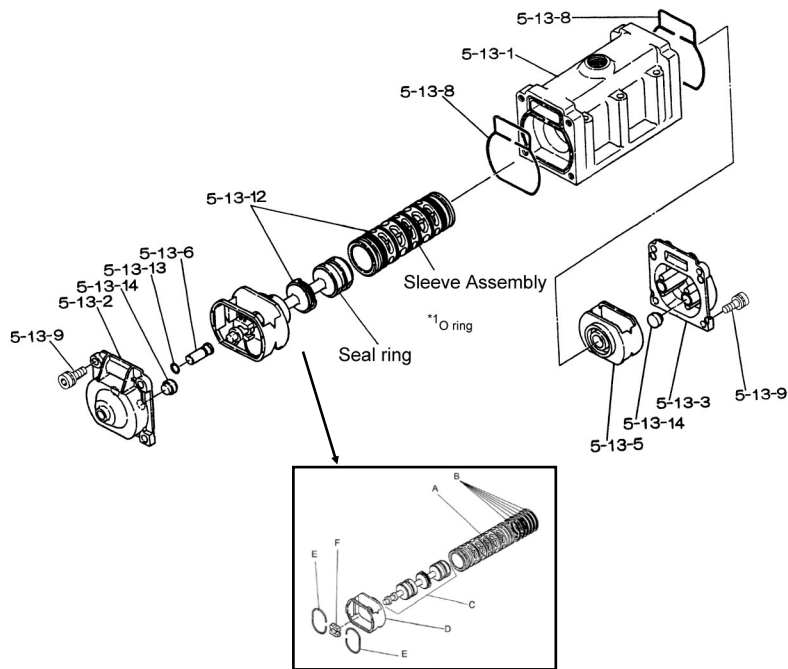


Air Operated Double Diaphragm Pump

■Body Assembly



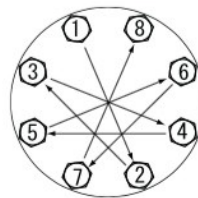
■Valve Body Assembly



Air Operated Double Diaphragm Pump

REF. NO.	PART NO.	DESCRIPTION	QTY.	REORDER
1	580962	OUT CHAMBER	2	
2	714371	IN MANIFOLD	1	
3	714365	OUT MANIFOLD	1	
5	803113	CENTER BODY ASSY.	1	
5-1	711935	AIR CHAMBER	2	
5-2	711936	BODY	1	
5-3	772689	THROAT BEARING	2	
5-4	711937	PILOT VALVE SPRING	2	
5-5	771740	PILOT VALVE SEAT	2	
5-6	832163	PILOT VALVE ASSY.	2	
5-8	640020	O RING	2	
5-9	685444	V PACKING	2	
5-10	640029	O RING	2	
5-11	771742	GASKET	2	
5-12	683812	FLAT SOCKET	12	
5-13	802971	VALVE BODY ASSY.	1	
5-13-1	711931	VALVE BODY	1	
5-13-2	580999	CAP A	1	
5-13-3	581000	CAP B	1	
5-13-5	771735	SPRING RETAINER	1	
5-13-6	712976	RESET BUTTON	1	
5-13-8	771738	GASKET	2	
5-13-9	685036	SOCKET BOLT	8	
5-13-12	805084	C SPOOL ASSY	1	
A	803675	SLEEVE ASSY	1	
B	640036	O RING	6	
C	805085	SPOOL ASSY	1	
D	771735	SPRING RETAINER	1	
E	711932	C SPRING	2	
F	771734	BLOCK	1	
5-13-13	640005	O RING	1	
5-13-14	684128	CUSHION	4	
5-14	771712	GASKET	1	
5-15	684240	BOLT W/WASHERS	6	
5-18	684987	WASHER	12	
7	717131	CENTER ROD	1	
10	833231	DIAPHRAGM	2	
11	712684	VALVE SEAT	4	
12	770694	BALL	4	
14	686974	BALL VALVE	1	
15	682523	ELBOW	1	
19	711912	BASE	2	
20	771402	FOOT RUBBER	4	
22	682740	WASHER	2	
23	686163	BOLT	20	
23	631917	WAVE WASHER	20	

REF. NO.	PART NO.	DESCRIPTION	QTY.	REORDER
24	631014	FLAT WASHER	4	
25	631917	WAVE WASHER	4	
26	611204	BOLT	16	
27	631015	FLAT WASHER	16	
28	631918	WAVE WASHER	16	
29	627014	NUT	16	
33	611177	BOLT	4	
34	627013	NUT	4	
35	611149	BOLT	4	
36	682276	NUT W/FLANGE	4	
40	643078	O RING	4	
42	686164	BOLT	4	
42	631917	WAVE WASHER	4	
44	804764	SILENCER ASSY	1	
53T	643145	O RING	4	
KIT	K80-MU	LIQUID SIDE KIT		
KIT	K80-AM	AIR MOTOR KIT		



Tightening torque for out chambers.

Out Chambers 29 ft-lbf {40 N-m}

Tightening torque for manifold retainer bolts.
BAU 18 ft-lbf {25 N-m}

General Tools:

- Socket wrenches - 24mm
- Hexagonal box wrench - 5mm, 6mm
- Open-end wrenches - 19mm, 24mm
- Plastic hammer

Special Tools:

- Sleeve remover (713180) sold separately)

Miscellaneous:

- Assembly Oil - turbine oil class 1 (equivalent to ISO VG32 grade)
- Thread locker
- Urea grease grade (NLGI) No. 2

Customer Notes

Model #: _____

Description: _____

Serial #: _____

Date Installed: _____

Department Location: _____

Tag/Project: _____