

BALDOR® • ***RELIANCE***

Product Information Packet

ECP84408TR-5

250HP, 1785RPM, 3PH, 60HZ, 449T, A44140M, TEFC

| Part Detail | | | | | | | |
|-------------|--------------------|----------------|---------|-------------|-----------|---------------|------------|
| Revision: | J | Status: | PRD/A | Change #: | | Proprietary: | No |
| Type: | AC | Prod. Type: | A44140M | Elec. Spec: | A44WG1503 | CD Diagram: | 416820-036 |
| Enclosure: | TEFC | Mfg Plant: | | Mech. Spec: | | Layout: | 617427-063 |
| Frame: | 449T | Mounting: | F1 | Poles: | 04 | Created Date: | 08-21-2012 |
| Base: | | Rotation: | PS | Insulation: | F | Eff. Date: | 05-23-2016 |
| Leads: | 3#1 (02 per group) | | | | | Replaced By: | |
| Literature: | | Elec. Diagram: | | | | | |

| Nameplate NP3237 | | | | | | | | | | | | |
|--------------------|--------------|-----------------|----------|---------------------|------|-------|-----------------------|------|------|--------|-------------|---|
| CAT NO | ECP84408TR-5 | SPEC NO. | P44G3987 | | | | | | | | | |
| HP | 250 | AMPS | 220 | VOLTS | 575 | | | | | | | |
| FRAME SIZE | 449T | RPM | 1785 | HZ | 60 | AMB | 40 | SF | 1.15 | DESIGN | B | |
| D.E. BRG.DATA | NU222 | O.D.E. BRG.DATA | 6318 | | PH | 3 | | DUTY | CONT | | INSUL.CLASS | F |
| D.E. BRG. | 110RU02M30X | TYPE | P | ENCL | TEFC | CODE | G | | | | | |
| O.D.E. BRG. | 90BC03J30X | POWER FACTOR | 88 | | | | | | | | | |
| 3/4 LOAD EFF. | 96.6 | IP | 56 | MAX CORR KVAR | 43.0 | | | | | | | |
| TEMP CODE | T3 | TEMP = | 200 | | | | | | | | | |
| CHP HZ | 60-90 | CT HZ | 30-60 | | | VT HZ | 0-60 | | | | | |
| INVERTER-TEMP-CODE | T3 | | | | | | | | | | | |
| SER.NO. | | | | MOTOR WEIGHT | 2732 | | | | | | | |
| | | | | NEMA-NOM-EFFICIENCY | 96.2 | | GUARANTEED EFFICIENCY | 95.4 | | | | |

Nameplate 000613007EX

| | | | |
|-----------------|--------------|--------------------------|---------------|
| CAT NO | ECP84408TR-5 | SPEC NO. | P44G3987 |
| NO. ROTOR BARS | 58 | GREASE TYPE | MOBIL SHC 220 |
| NO. SLOTS | 72 | NL AMPS AT RATED VOLTAGE | 57.9 |
| 5 YEAR WARRANTY | | WINDING RES @25 C | .0241 |
| MFG. DATE | | SER.NO | |
| | | | OHMS |
| | | | |
| | | | |

| | |
|-----------------------|--|
| Nameplate NP2496L | |
| MOBIL SHC -220 GREASE | |
| | |

| Parts List | | |
|-------------|--|----------|
| Part Number | Description | Quantity |
| SA249754 | SA P44G3987 | 1.000 EA |
| RA236614 | RA P44G3987 | 1.000 EA |
| 000613006PU | N/P (RELEASE QTY 10,000) UL CSA LABEL | 1.000 EA |
| NP3237 | SS SUPER E INVERTER DUTY IEEE 841 | 1.000 EA |
| 000613007EX | SS IEEE 841 EMBOSSED AUXILIARY NAMEPLATE | 1.000 EA |
| 000692000FF | N/P | 1.000 EA |
| 000692000JP | N/P | 1.000 EA |
| 000692000RT | N/P | 1.000 EA |
| 000692000VD | LABEL WARNING | 1.000 EA |
| NP2496L | MOTOR LUBE NAMEPLATE | 1.000 EA |
| 004824015AP | GREASE MOBILITH SHC 220 | 1.156 LB |
| 032018008CK | HHCS 3/8-16X1L PLATED | 4.000 EA |
| 032018020FK | HHCS 3/4-10X2-1/2 PLTD. | 4.000 EA |
| 032018036DK | HHCS 1/2-13X4-1/2 PLTD. | 3.000 EA |
| 032620016LA | SOCKET SET SCREW-449 | 3.000 EA |
| 034017014AB | LCKW 3/8 STD. PLATED | 4.000 EA |
| 034180014DA | KEY 1/4X1/4X1-3/4 L | 1.000 EA |
| 034530072AB | P/NIP 1/8X9"L Threaded both ends | 1.000 EA |
| 034530072BB | PIPE NIPPLE,DE - 440-BS | 1.000 EA |
| 034600001AA | BUSH 1/4TO1/8 BLACK | 1.000 EA |
| 034630002AB | CPLG 1/4" PLATED | 1.000 EA |
| 034690005AB | PPLG 3/4 PLATED | 2.000 EA |
| 035000001G | GREASE RELIEF FITTING, ALEMITE 317400 | 1.000 EA |
| 089490101C | G28 BRKT 089490100WCA | 1.000 EA |

| Parts List (continued) | | |
|------------------------|---------------------------------------|----------|
| Part Number | Description | Quantity |
| 412118006A | DRAIN | 1.000 EA |
| 078548001R | FAN KB 234/150 (84) 400 | 1.000 EA |
| 083199082RA | G28 SHORT FAN COVER W/BAFFLE ASSEMBLY | 1.000 EA |
| 089490099D | G28 BRKT 089490098WCA | 1.000 EA |
| 412118006A | DRAIN | 1.000 EA |
| 415028021L | SEAL - 449 | 1.000 EA |
| 415072001B | CLAMP | 1.000 EA |
| 415096002A | CPLG 1/8 HEX TYPE | 1.000 EA |
| 418151014G | RETAIN RING | 1.000 EA |
| 423709011D | WASHER | 3.000 EA |
| 032018004BK | HHCS 5/16-18X1/2 PLATED | 3.000 EA |
| 032018006BK | HHCS 5/16-18X3/4 PLATED | 3.000 EA |
| 032018020FK | HHCS 3/4-10X2-1/2 PLTD. | 4.000 EA |
| 032018030DK | HHCS 1/2-13X3-3/4 PLTD. | 3.000 EA |
| 415915007G | GASK, LAC | 1.000 FT |
| 034017013AB | LCKW 5/16 STD. PLATED | 3.000 EA |
| 034530072AB | P/NIP 1/8X9"L Threaded both ends | 1.000 EA |
| 034530072BB | PIPE NIPPLE,DE - 440-BS | 1.000 EA |
| 034600001AA | BUSH 1/4TO1/8 BLACK | 1.000 EA |
| 034630002AB | CPLG 1/4" PLATED | 1.000 EA |
| 035000001G | GREASE RELIEF FITTING, ALEMITE 317400 | 1.000 EA |
| 415028021K | INPRO SEAL,DE - 449 | 1.000 EA |
| 415096002A | CPLG 1/8 HEX TYPE | 1.000 EA |
| 418151014H | RETAIN RING | 1.000 EA |

Product Information Packet: ECP84408TR-5 - 250HP,1785RPM,3PH,60HZ,449T,A44140M,TEFC

| | | |
|--------------|---|----------|
| 423709011D | WASHER | 3.000 EA |
| 702623022A | G28 AIR DEFLECTOR DRIVE END -- PLASTIC | 1.000 EA |
| 702623013A | THERMAL BARRIER -- G28 -- BRACKET MTD | 1.000 EA |
| 032018008BK | HHCS 5/16-18X1L PLATED | 4.000 EA |
| 032018008DK | HHCS 1/2-13X1 PLATED | 4.000 EA |
| 033512004LB | HHTTS 1/4-20X1/2 PLTD. | 1.000 EA |
| 035000001A | ALFTG 1/8" 1610-BL | 1.000 EA |
| 035000001A | ALFTG 1/8" 1610-BL | 1.000 EA |
| 067053014A | GASK 440 | 1.000 EA |
| 076870000B | +CBCST BLKT - 440 | 1.000 EA |
| 076871000A | +CBOX CVR BLKT - 449 | 1.000 EA |
| 406056007A | GASKET, 440 | 1.000 EA |
| 406099000A | PLUG - FAN COVER 320-440 | 1.000 EA |
| 415000103D | T/LUG #4AWG-1/0AWG W/HOLE FOR .250 BOLT | 1.000 EA |
| 418150003A | GREASE FITTING CAP | 1.000 EA |
| 418150003A | GREASE FITTING CAP | 1.000 EA |
| 033775004EA | DRSCR #6-1/4 304 S.S. | 2.000 EA |
| 034180054KA | KEY 7/8X7/8X6-3/4 L | 1.000 EA |
| PK5005A01 | WOOD BASE 449 60 X 41-1/2 BLT 25 X 18 | 1.000 EA |
| MG1025N19 | WILKO 778.50 BLUE GREEN - 55 GAL DRUMS | 0.375 GA |
| 004824003CBY | WILKO PAINT 060.02 - ACTIVATOR | 0.094 GA |
| MG1500G03-5 | LACQUER PRIMER, GRAY | 0.094 GA |
| 421948051 | LABEL, MYLAR | 1.000 EA |
| LB1449 | DIV-2/NEC WARNING LABEL | 1.000 EA |

| | | | | | | |
|-----------|-------------|-------------------|-----------|---------------------------------------|-------------|-------|
| REL. S.O. | FRAME | HP | TYPE | PHASE/HERTZ | RPM | VOLTS |
| | 449T | 250 | P | 3/60 | 1785 | 575 |
| AMPS | DUTY | AMB °C/ INSUL. | S.F. | NEMA DESIGN | CODE LETTER | ENCL. |
| 220 | CONT | 40/F | 1.15 | B | G | TEFC |
| E/S | ROTOR | TEST S.O. | TEST DATE | STATOR RES. @25 °C (BETWEEN LINES) | | |
| 833162 | 418143050YE | --- | --- | .0241 | | |

| PERFORMANCE | | | | | | |
|-------------|------|---------|------|----------------|--------------|--|
| LOAD | HP | AMPERES | RPM | POWER FACTOR % | EFFICIENCY % | |
| NO LOAD | 0 | 57.9 | 1800 | 3.23 | 0 | |
| 1/4 | 62.6 | 84.7 | 1796 | 58.0 | 95.4 | |
| 2/4 | 125 | 124 | 1792 | 78.4 | 96.7 | |
| 3/4 | 187 | 171 | 1788 | 85.2 | 96.6 | |
| 4/4 | 250 | 222 | 1784 | 87.6 | 96.2 | |
| 5/4 | 313 | 277 | 1779 | 88.3 | 95.7 | |

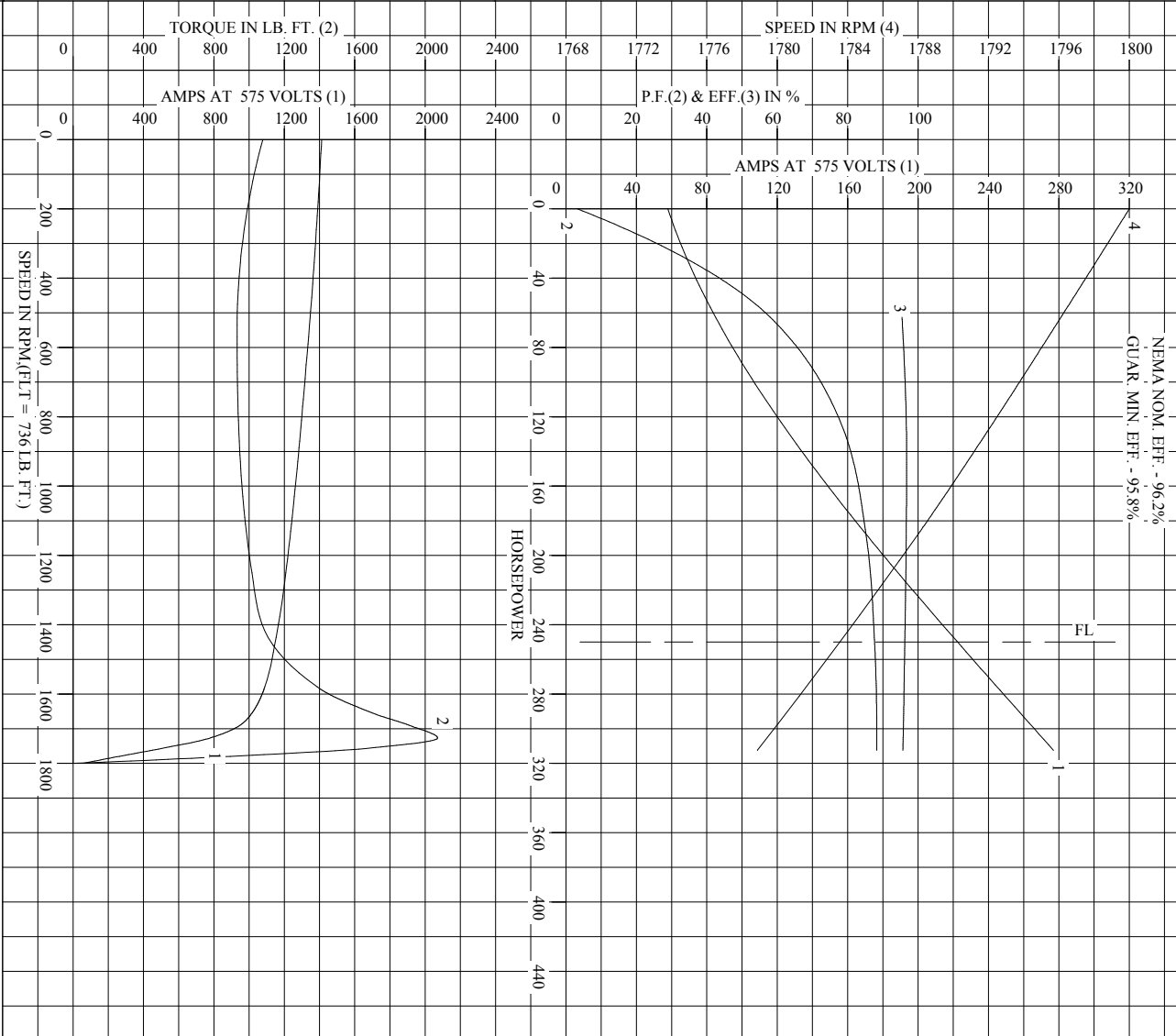
| SPEED TORQUE | | | | | | |
|--------------|------|--------------------|----------------|---------|--|--|
| | RPM | TORQUE % FULL LOAD | TORQUE LB.-FT. | AMPERES | | |
| LOCKED ROTOR | 0 | 146 | 1077 | 1412 | | |
| PULL UP | 550 | 127 | 932 | 1341 | | |
| BREAKDOWN | 1727 | 281 | 2071 | 777 | | |
| FULL LOAD | 1784 | 100 | 736 | 222 | | |

AMPERES SHOWN FOR 575. VOLT CONNECTION. IF OTHER VOLTAGE CONNECTIONS ARE AVAILABLE, THE AMPERES WILL VARY INVERSELY WITH THE RATED VOLTAGE

REMARKS: TYPICAL DATA
NEMA NOM. EFF. - 96.2%
GUAR. MIN. EFF. - 95.8%

| | | |
|---------------|-------------------------|---------------------|
| BALDOR | DR. BY J.J.HARRISON | A-C MOTOR |
| | CK. BY T.RELATI | |
| | APP. BY T.RELATI | |
| DATE 07/12/10 | PERFORMANCE DATA | A44WG1503-R001 |
| | | ISSUE DATE 12/18/10 |

REL. S. O. _____ RPM 1785 S. F. 1.15 ROTOR 418143050YE
 FRAME 449T VOLTS 575 NEMA DESIGN B TEST S. O. TYPICAL DATA
 HP 250 AMPS 220 CODE LETTER G TEST DATE ---
 TYPE P DUTY CONT ENCLOSURE TEFC STATOR RES. @ 25 °C .0241
 PHASE/HERTZ 3/60 AMB °C/INSUL 40/F E/S 833162 OHMS (BETWEEN LINES)



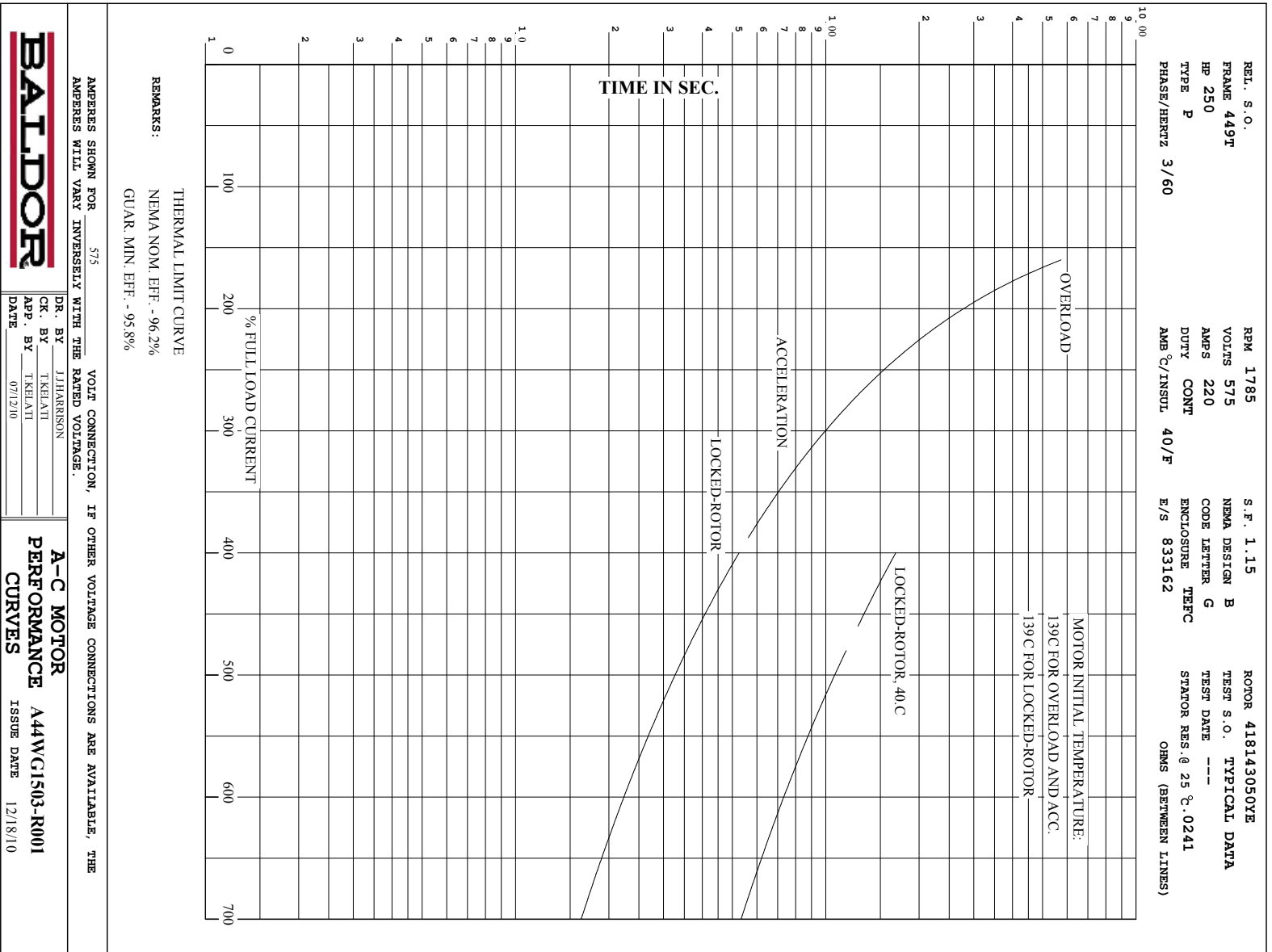
AMPS SHOWN FOR 575 VOLT CONNECTION, IF OTHER VOLTAGE CONNECTIONS ARE AVAILABLE, THE AMPS WILL VARY INVERSELY WITH THE RATED VOLTAGE.

BALDOR

DR. BY J. HARRISON
 CK. BY T. KHATTI
 APP. BY T. KHATTI
 DATE 07/12/10

A-C MOTOR PERFORMANCE CURVES
 A44WG1503-R001
 ISSUE DATE 12/18/10

Printed on 12/18/10 6:16 @ pscs-motoreng



Printed on 12/18/10 6:16 @ psecs-motorer

DUTY MASTER ALTERNATING CURRENT MOTORS

SQUIRREL-CAGE INDUCTION

ENCLOSURE: TOTALLY ENCLOSED

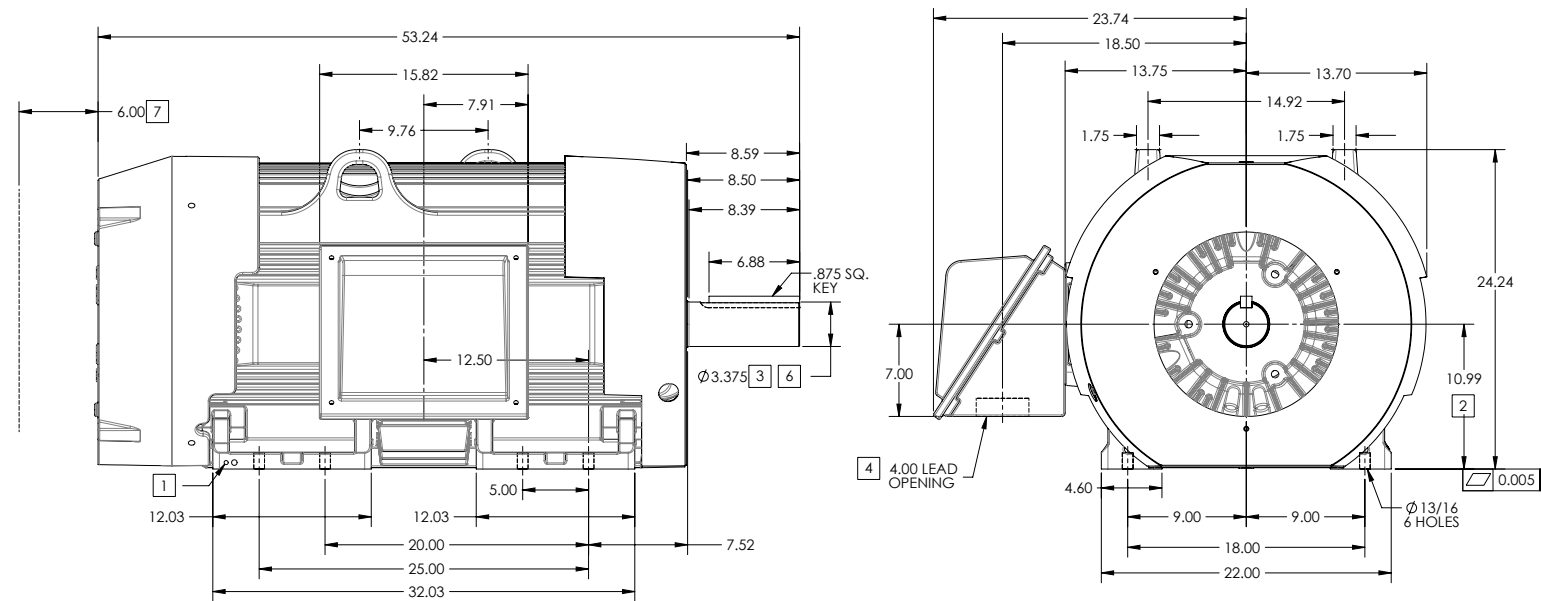
FRAME 449T ABOVE NEMA RATINGS (1800 RPM MAX)

COOLING: FAN COOLED

MOUNTING: FOOT

INCLUDES 447T FRAME MOUNTING HOLES

841XL ENCLOSURE ENHANCEMENT



- 1. GROUND HOLES QTY 1 1/2-13 TAP; QTY 1 3/8-16 TAP
- 2. VARIES +.00,-.06
- 3. VARIES +.00,-.001
- 4. ON STANDARD MOTORS THIS IS CONDUIT SIZE. ON XT AND CORROSION PROOF MOTOR THIS IS PIPE TAP.
- 5. MOTOR WEIGHTS MAY VARY BY 15% DEPENDING ON RATING.
- 6. SHAFT TIR = 0.0015 IN FOR BALL BEARING MOTORS AND 0.002 IN FOR ROLLER BEARING CONSTRUCTION
- 7. OBSTRUCTION MUST NOT ENCROACH ON AIR INLET

[5] WEIGHT (LBS): 3080

DRIVE END AIR DEFLECTOR IS ONLY INCLUDED WHEN NECESSARY.

DIMENSIONS ARE IN INCHES; SEE SHEET 2 FOR DIMENSIONS IN MILLIMETERS

CUSTOMER IS RESPONSIBLE FOR DETERMINING THAT MOTOR PERFORMANCE IS SUITABLE IN THE APPLICATION.

CONDUIT BOX LOCATED ON OPPOSITE SIDE WHEN F-2.
IF MOUNTING CLEARANCE DETAILS ARE REQUIRED, CONSULT FACTORY.

SHEET NUMBER
1 OF 2

| | | | |
|---|-------------|------------------------------|------------------|
| REV. DESC: REMOVING SHAFT STRAIGHTING NOTES AT BOTTOM | | | |
| REV: B | VERSION: 02 | REVISED: 11-13-53 10/04/2014 | TDR: 00000874636 |
| MODEL NO. 617427-063 | | | |
| BY: RAGRA | | | |

BALDOR
G449T/447T STD - FOOTED - SIDE CENTER CB - 841XL

DUTY MASTER ALTERNATING CURRENT MOTORS

SQUIRREL-CAGE INDUCTION

ENCLOSURE: TOTALLY ENCLOSED

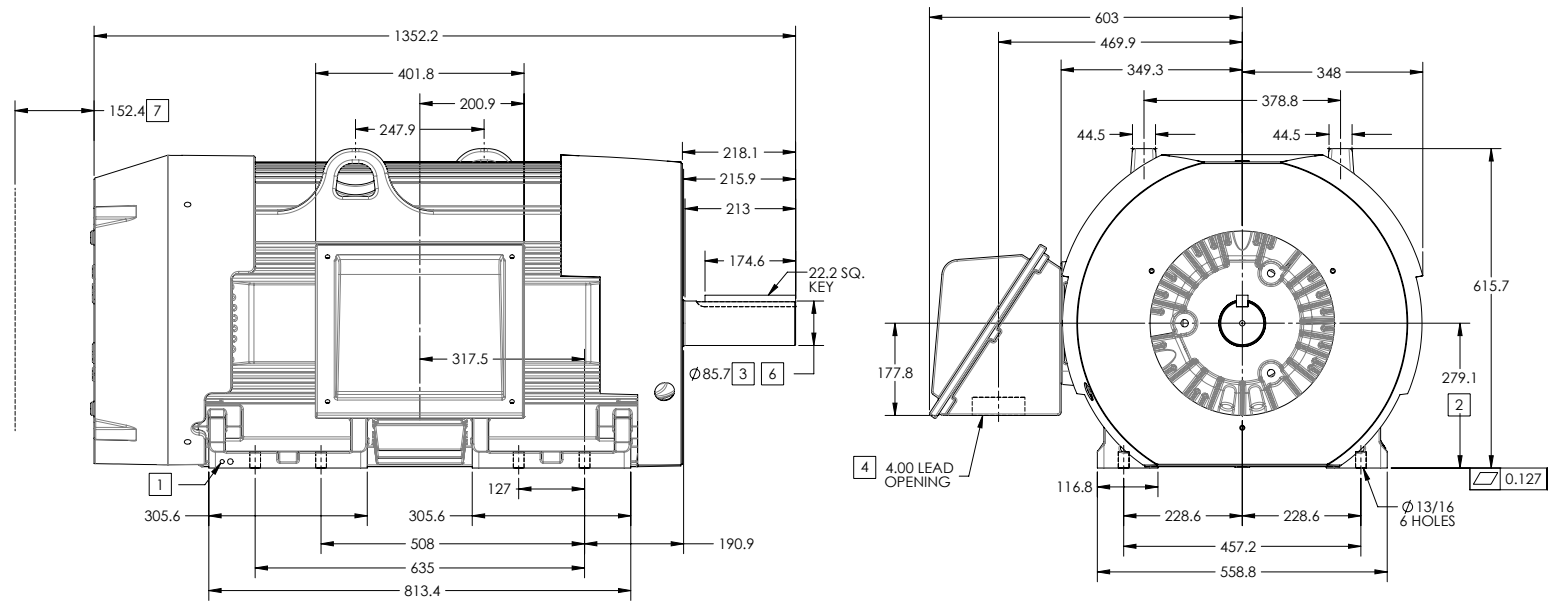
FRAME 449T ABOVE NEMA RATINGS (1800 RPM MAX)

COOLING: FAN COOLED

MOUNTING: FOOT

INCLUDES 447T FRAME MOUNTING HOLES

841XL ENCLOSURE ENHANCEMENT



1. GROUND HOLES QTY 1 1/2-13 TAP; QTY 1 3/8-16 TAP
2. VARIES +.00,-.06
3. VARIES +.00,-.001
4. ON STANDARD MOTORS THIS IS CONDUIT SIZE. ON XT AND CORROSION PROOF MOTOR THIS IS PIPE TAP.
5. MOTOR WEIGHTS MAY VARY BY 15% DEPENDING ON RATING.
6. SHAFT TIR = 0.038MM FOR BALL BEARING MOTORS AND 0.051MM FOR ROLLER BEARING CONSTRUCTION
7. OBSTRUCTION MUST NOT ENCR OACH ON AIR INLET

[5] WEIGHT (KGS): 1400

DRIVE END AIR DEFLECTOR IS ONLY INCLUDED WHEN NECESSARY.

DIMENSIONS ARE IN MILLIMETERS; SEE SHEET 1 FOR DIMENSIONS IN INCHES

CUSTOMER IS RESPONSIBLE FOR DETERMINING THAT MOTOR PERFORMANCE IS SUITABLE IN THE APPLICATION.

CONDUIT BOX LOCATED ON OPPOSITE SIDE WHEN F-2.
IF MOUNTING CLEARANCE DETAILS ARE REQUIRED, CONSULT FACTORY.

SHEET NUMBER
2 OF 2

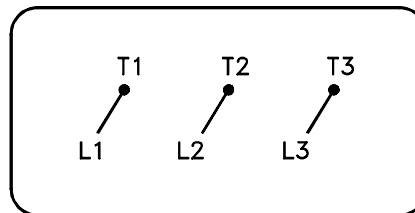
617427-063

| | | |
|---|------------------------------|------------------|
| REV. DESC: REMOVING SHAFT STRAIGHTING NOTES AT BOTTOM | REVISED: 11-13-53 10/04/2014 | TDR: 00000874636 |
| REV: B | VERSION: 02 | |
| MODEL NO. 617427-063 | | |
| BY: RAGRA | | |

BALDOR
G449T/447T STD - FOOTED - SIDE CENTER CB - 841XL

416820-036

A-C MOTOR
 CONNECTION DIAGRAM
 STANDARD 3 LEAD CONNECTED



(N.P. 1575-BA)

416820-036

| | | |
|--------------------------------------|------------------------------|-------------------|
| REV. DESC: LOADED TO BUS, C/R 335225 | | |
| REV. LTR: - | VERSION: 00 | TDR: 000000538207 |
| FILE: \MGA\00000\682 | REVISED: 11:54:06 04/30/2010 | |
| MTL: - | BY: RAGRA | |

BALDOR

CONN DIAG - STANDARD 3 LEAD

SH 1 of 1

Marketing maintained PDF of MN408:

<http://www.baldor.com/support/Literature/Load.ashx/MN408?ManNumber=MN408>

Marketing maintained PDF of MN416:

<http://www.baldor.com/support/Literature/Load.ashx/MN416?ManNumber=MN416>