

BALDOR® • **RELIANCE**

Product Information Packet

EM3215T-G

2HP, 1165RPM, 3PH, 60HZ, 184T, 3636M, OPSB, F1

| Part Detail | | | | | | | |
|-------------|------|----------------|-------|-------------|----------|---------------|------------|
| Revision: | G | Status: | PRD/A | Change #: | | Proprietary: | No |
| Type: | AC | Prod. Type: | 3636M | Elec. Spec: | 36WGS947 | CD Diagram: | CD0005 |
| Enclosure: | OPSB | Mfg Plant: | | Mech. Spec: | 36M526 | Layout: | 36LYM526 |
| Frame: | 184T | Mounting: | F1 | Poles: | 06 | Created Date: | 07-03-2012 |
| Base: | RG | Rotation: | R | Insulation: | H | Eff. Date: | 10-26-2016 |
| Leads: | 9#16 | | | | | Replaced By: | |
| Literature: | | Elec. Diagram: | | | | | |

| Nameplate NP1259L | | | | | | | | | | |
|-------------------|--------------|--|------|----|----------------|------|--|-----|----|---|
| CAT.NO. | EM3215T-G | | | | | | | | | |
| SPEC. | 36M526S947G1 | | | | | | | | | |
| HP | 2 | | | | | | | | | |
| VOLTS | 230/460 | | | | | | | | | |
| AMP | 6.8/3.4 | | | | | | | | | |
| RPM | 1165 | | | | | | | | | |
| FRAME | 184T | | | | HZ | 60 | | | PH | 3 |
| SER.F. | 1.15 | | CODE | L | DES | B | | CL | H | |
| NEMA-NOM-EFF | 87.5 | | PF | 63 | | | | | | |
| RATING | 40C AMB-CONT | | | | | | | | | |
| CC | 010A | | | | USABLE AT 208V | | | 6.8 | | |
| DE | 6206 | | | | ODE | 6205 | | | | |
| ENCL | OPSB | | SN | | | | | | | |

| Parts List | | |
|-------------|--|----------|
| Part Number | Description | Quantity |
| SA247258 | SA 36M526S947G1 | 1.000 EA |
| RA234135 | RA 36M526S947G1 | 1.000 EA |
| 36CB3004 | 36 CB CASTING W/1.09 DIA LEAD HOLE @ 6:0 | 1.000 EA |
| 51XB1016A08 | 10-16X 1/2HXWSSLD SERTYB | 2.000 EA |
| 11XW1032G06 | 10-32 X .38, TAPTITE II, HEX WSHR SLTD U | 1.000 EA |
| HW3001B01 | BRASS CUP WASHER, FOR #8 SCREW | 1.000 EA |
| 36EP3200A01 | FR ENDPLATE, ASSEMBLY FOR ROUTING | 1.000 EA |
| HW4500A01 | 1641B(ALEMITE)400 UNIV, GREASE FITT | 1.000 EA |
| HW5100A05 | WVY WSHR F/205 & 304 BRGS | 1.000 EA |
| 36PE3201A39 | PU ENDPLATE, ASSEMBLY FOR ROUTING | 1.000 EA |
| 10XN2520A20 | 1/4-20X 1 1/4 HEX HD X | 2.000 EA |
| HW1001A25 | LOCKWASHER 1/4, ZINC PLT .493 OD, .255 I | 2.000 EA |
| HW4500A01 | 1641B(ALEMITE)400 UNIV, GREASE FITT | 1.000 EA |
| XY2520A12 | 1/4-20 HEX NUT, DIRECTIONAL SERRATIONS | 4.000 EA |
| 36CB4516 | 36 LIPPED CB LID | 1.000 EA |
| 51XW0832A07 | 8-32 X .44, TAPTITE II, HEX WSHR SLTD SE | 4.000 EA |
| HW2501E16 | 3KEY, 1/4 SQ X 1.750 | 1.000 EA |
| HA7000A02 | KEY RETAINER RING, 1 1/8 DIA, 1 3/8 DIA | 1.000 EA |
| 85XU0407S04 | 4X1/4 U DRIVE PIN STAINLESS | 2.000 EA |
| LB1459 | AEGIS SGR LABEL "AEGISLBL-100" | 1.000 EA |
| HA6362ZP | LIFTING LUG FOR 36 FRAME MOTORS. | 2.000 EA |
| MJ1000A02 | GREASE, POLYREX EM EXXON (USe 4824-15A) | 0.050 LB |
| MG1000Y03 | MUNSELL 2.53Y 6.70/ 4.60, GLOSS 20, | 0.022 GA |
| HA3101A40 | THRUBOLT 1/4-20 X 12.687 | 4.000 EA |

| Parts List (continued) | | |
|-------------------------------|--|-----------------|
| Part Number | Description | Quantity |
| 36AD2004A01 | BAFFLE PLATE,MOD 36-SLTD BAND MTRS DELTA | 1.000 EA |
| LC0005E01 | CONN.DIA./WARNING LABEL (LC0005/LB1119N) | 1.000 EA |
| NP1259L | ALUM SUPER-E UL CSA-EEV CC NEMA PREMIUM | 1.000 EA |
| 36PA1000 | PKG GRP, PRINT PK1016A06 | 1.000 EA |
| MN416A01 | TAG-INSTAL-MAINT no wire (1000/bx) 11/14 | 1.000 EA |
| LB1350 | BAR CODE LABEL FOR YORK | 1.000 EA |

AC Induction Motor Performance Data

Record # 39004 - Typical performance - not guaranteed values

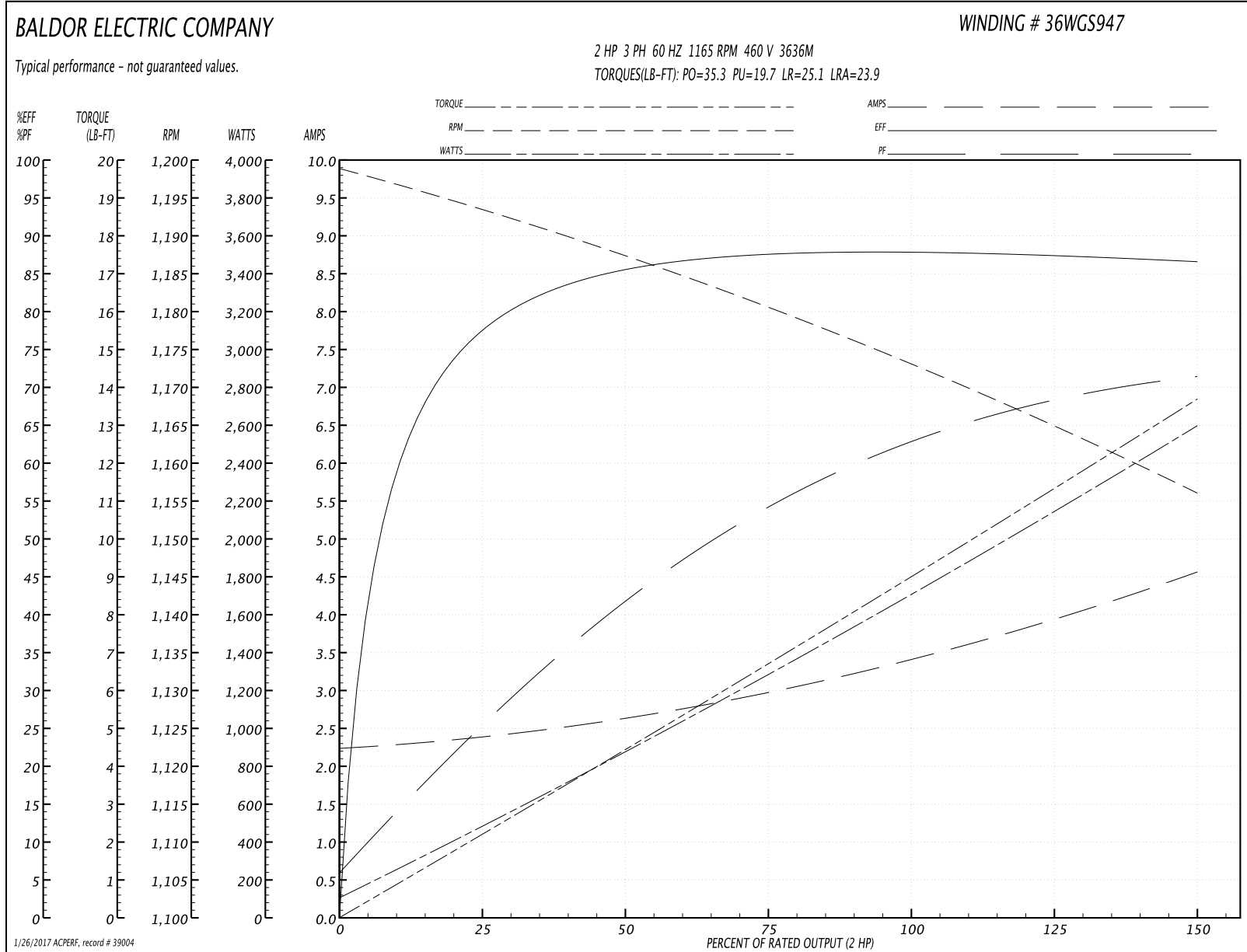
| | | |
|-------------------------------|--------------------|------------------------|
| Winding: 36WGS947-R002 | Type: 3636M | Enclosure: OPSB |
|-------------------------------|--------------------|------------------------|

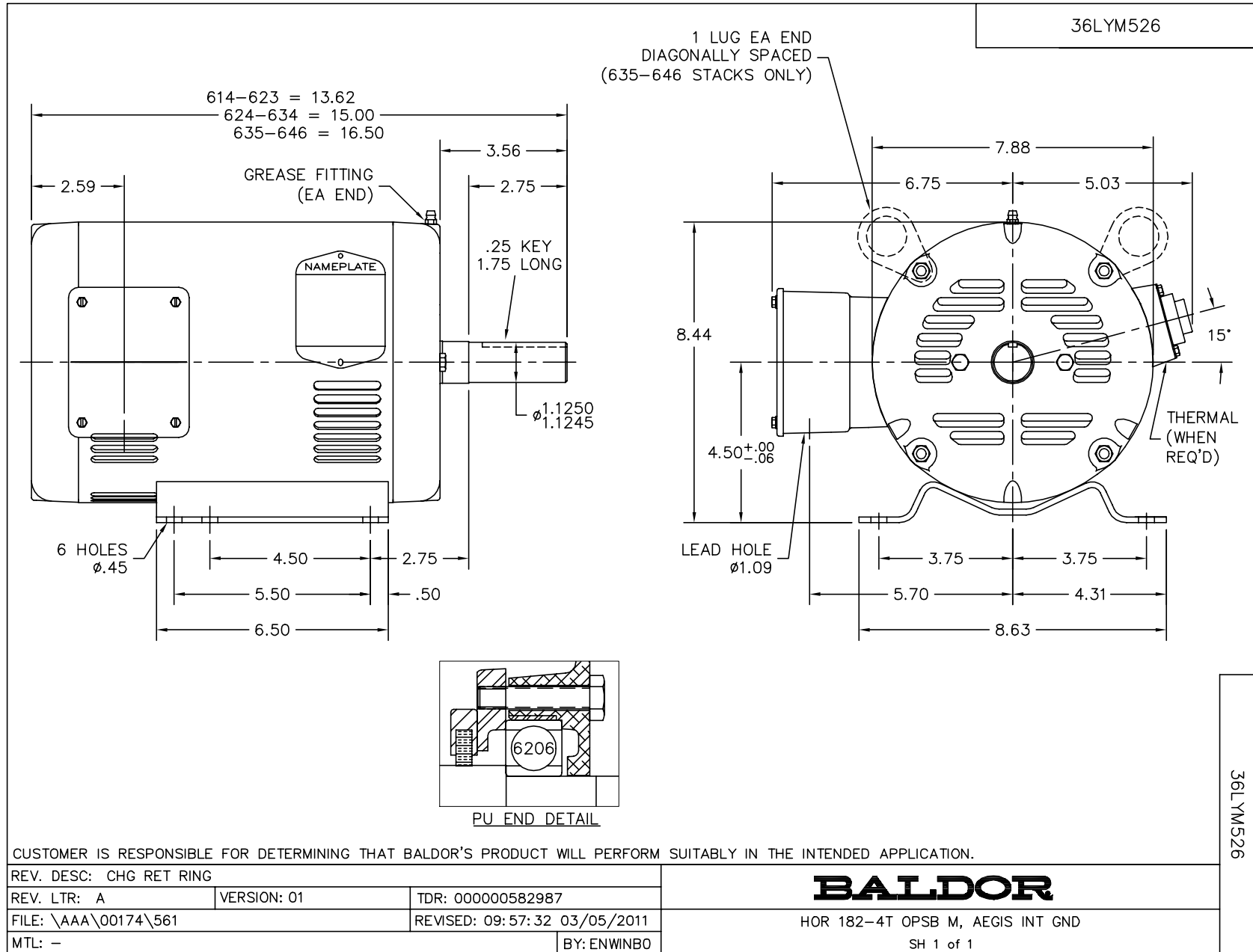
| Nameplate Data | | | | 460 V, 60 Hz: High Voltage Connection | |
|-----------------------|--------------|--------------|----|--|----------------|
| Rated Output (HP) | 2 | | | Full Load Torque | 9.01 LB-FT |
| Volts | 230/460 | | | Start Configuration | direct on line |
| Full Load Amps | 6.8/3.4 | | | Breakdown Torque | 35.3 LB-FT |
| R.P.M. | 1165 | | | Pull-up Torque | 19.7 LB-FT |
| Hz | 60 | Phase | 3 | Locked-rotor Torque | 25.1 LB-FT |
| NEMA Design Code | B | KVA Code | L | Starting Current | 23.9 A |
| Service Factor (S.F.) | 1.15 | | | No-load Current | 2.26 A |
| NEMA Nom. Eff. | 87.5 | Power Factor | 63 | Line-line Res. @ 25°C | 4.9075 Ω |
| Rating - Duty | 40C AMB-CONT | | | Temp. Rise @ Rated Load | 24°C |
| S.F. Amps | | | | Temp. Rise @ S.F. Load | 28°C |

Load Characteristics 460 V, 60 Hz, 2 HP

| % of Rated Load | 25 | 50 | 75 | 100 | 125 | 150 | S.F. |
|-----------------|--------|------|--------|--------|--------|--------|------|
| Power Factor | 27 | 43 | 55 | 62 | 68 | 72 | 66 |
| Efficiency | 77.9 | 85.5 | 87.6 | 88 | 87.6 | 86.8 | 87.8 |
| Speed | 1193.3 | 1187 | 1180.2 | 1173.2 | 1165.2 | 1155.9 | 1168 |
| Line amperes | 2.37 | 2.62 | 2.99 | 3.43 | 3.96 | 4.54 | 3.75 |

Performance Graph at 460V, 60Hz, 2.0HP Typical performance - Not guaranteed values





CD0005



LOW VOLTAGE
(2Y)



LINE

HIGH VOLTAGE
(1Y)



LINE

NOTES:

1. INTERCHANGE ANY TWO LINE LEADS TO REVERSE ROTATION.
2. OPTIONAL THERMOSTATS ARE PROVIDED WHEN SPECIFIED.
3. ACTUAL NUMBER OF INTERNAL PARALLEL CIRCUITS MAY BE A MULTIPLE OF THOSE SHOWN ABOVE.
4. LEAD COLORS ARE OPTIONAL. LEADS MUST ALWAYS BE NUMBERED AS SHOWN.

| | | | |
|---|---------|-------------------------|--------------|
| REV. DESC: REVISE TO SHOW OPTIONAL COLORS | | | |
| REV. LTR: E | BY: JLP | REVISED: 01/19/99 10:15 | TDR: 0171435 |
| 9000D | | FILE: AAA00005140 | MDL: - |
| | | MTL: - | |

BALDOR ELECTRIC Co.

3PH, DV, 9 LEADS

CD0005