

BALDOR® • RELIANCE

Product Information Packet

EM3711T-58

10HP,2900RPM,3PH,50HZ,215T,3740M,TEFC,F1

Part Detail							
Revision:	G	Status:	PRD/A	Change #:		Proprietary:	No
Type:	AC	Prod. Type:	3740M	Elec. Spec:	37WGR698	CD Diagram:	CD0382
Enclosure:	TEFC	Mfg Plant:		Mech. Spec:	37A001	Layout:	37LYA001
Frame:	215T	Mounting:	F1	Poles:	02	Created Date:	12-08-2014
Base:	RG	Rotation:	R	Insulation:	F	Eff. Date:	08-31-2016
Leads:	6#14					Replaced By:	
Literature:		Elec. Diagram:					

Nameplate NP3444L											
CAT NO	EM3711T-58										
SPEC.	37A001R698G1										
HP	10							PH	3		
VOLTS	400										
AMP	13.1										
RPM	2900										
FRAME	215T				HZ	50			I.P.	54	
SER.F.	1.15		CODE	H		DES	B		CL	F	
NOM.EFF.	90.2										
PF	89			USABLE AT 208V							
RATING	40C AMB-CONT							CC			
DE BRG	6307				ODE	6206					
ENCL	TEFC		SN								
VPWM INVERTER READY											
CT6-60H(10:1)VT3-60H(20:1											
BLANK	IE3-93.2(75%)93.7(50%)										

Parts List		
Part Number	Description	Quantity
SA290882	SA 37A001R698G1	1.000 EA
RA277033	RA 37A001R698G1	1.000 EA
36FN3000C02	EXFN, PLASTIC, 5.25 OD, 1.175 ID	1.000 EA
HW3200A01	3/8-16X3/4 I-BLT WELDED F/S	1.000 EA
37CB3006	37 CB CASTING W/1.38 LEAD HOLE @ 6:00	1.000 EA
37GS1000	GASKET, CONDUIT BOX STD., .06 THICK LEXI	1.000 EA
51XW2520A12	.25-20 X .75, TAPTITE II, HEX WSHR SLTD	2.000 EA
11XW1032G06	10-32 X .38, TAPTITE II, HEX WSHR SLTD U	1.000 EA
37EP3101A01	FR ENDPLATE, FOR ROUTING PURPOSES	1.000 EA
HW4500A01	1641B(ALEMITE)400 UNIV, GREASE FITT	1.000 EA
HW5100A06	W2420-025 WVY WSHR (WB)	1.000 EA
37PE3100A01	PUEP ASSEMBLY - ROUTING PUPROSES	1.000 EA
HW4500A01	1641B(ALEMITE)400 UNIV, GREASE FITT	1.000 EA
XY3118A12	5/16-18 HEX NUT DIRECTIONAL SERRATION	4.000 EA
51XB1214A20	12-14X1.25 HXWSSLD SERTYB	1.000 EA
07FH4007SP	PRIMED	1.000 EA
51XW1032A06	10-32 X .38, TAPTITE II, HEX WSHR SLTD S	3.000 EA
37CB4516	LIPPED LID FOR 37 FRAME NEC KOBX	1.000 EA
37GS1008	37 GS FOR CB LID - LEXIDE	1.000 EA
51XW0832A07	8-32 X .44, TAPTITE II, HEX WSHR SLTD SE	4.000 EA
HW2501F21	KEY, 5/16 SQ X 2.375	1.000 EA
HA7000A02	KEY RETAINER RING, 1 1/8 DIA, 1 3/8 DIA	1.000 EA
LB1115N	LABEL,LIFTING DEVICE (ON ROLLS)	1.000 EA
85XU0407S04	4X1/4 U DRIVE PIN STAINLESS	2.000 EA

Parts List (continued)		
Part Number	Description	Quantity
MJ1000A02	GREASE, POLYREX EM EXXON (USe 4824-15A)	0.050 LB
MG1000Y03	MUNSELL 2.53Y 6.70/ 4.60, GLOSS 20,	0.028 GA
HA3104A17	5/16-18X13.250 T-BLT/OHIO	4.000 EA
HA4067A01	PUSH IN DRAIN FITTING (BLACK)	1.000 EA
HA4067A01	PUSH IN DRAIN FITTING (BLACK)	1.000 EA
LB1119N	WARNING LABEL	1.000 EA
LC0382	CONNECTION LABEL	1.000 EA
NP3444L	ALUM SUPER-E VPWM INV READY NEMA IE3 UL	1.000 EA
G0PA1000	PKG GRP, PRINT PK1026A06	1.000 EA
MN416A01	TAG-INSTAL-MAINT no wire (1000/bx) 11/14	1.000 EA

AC Induction Motor Performance Data

Record # 48453 - Typical performance - not guaranteed values

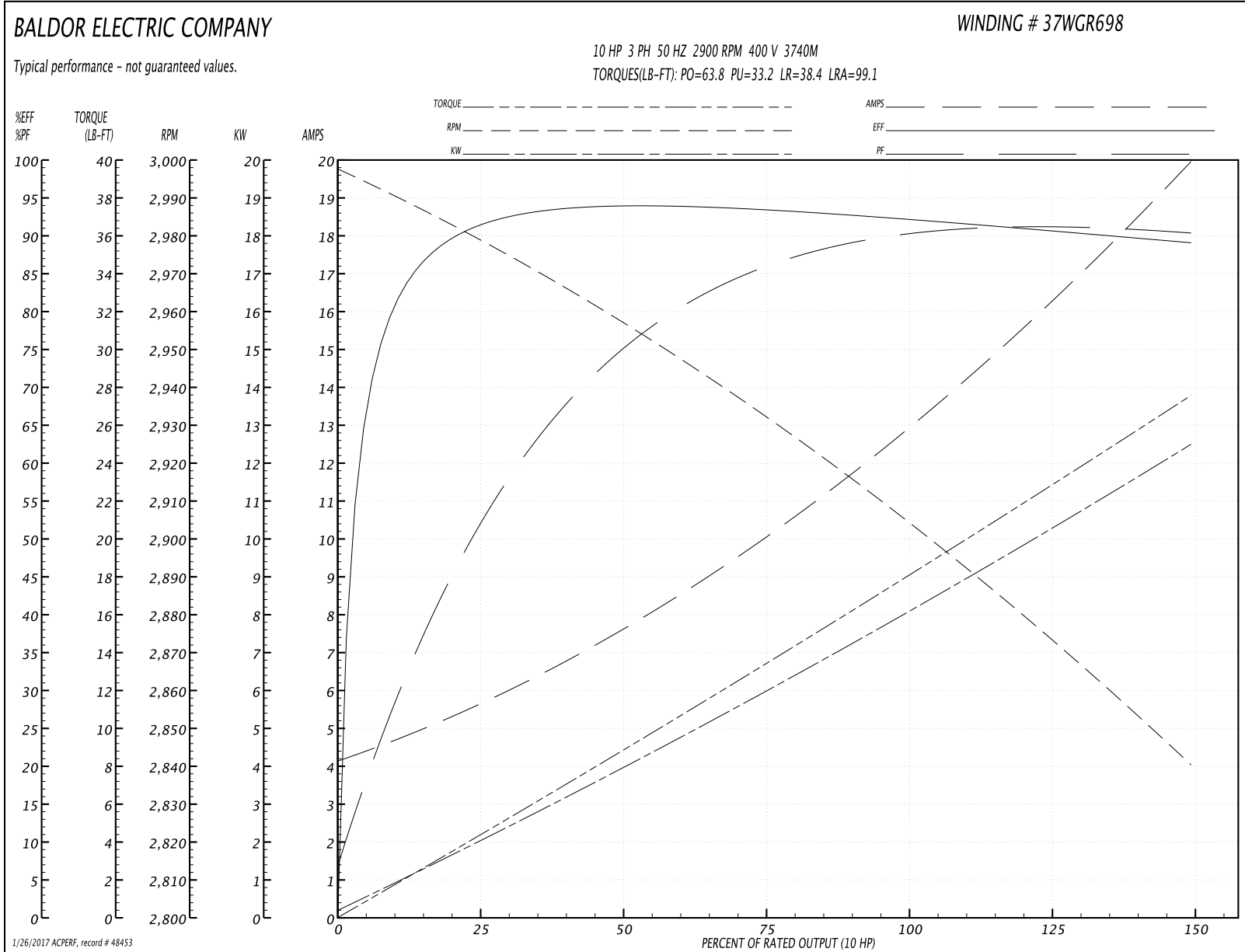
Winding: 37WGR698-R001	Type: 3740M	Enclosure: TEFC
-------------------------------	--------------------	------------------------

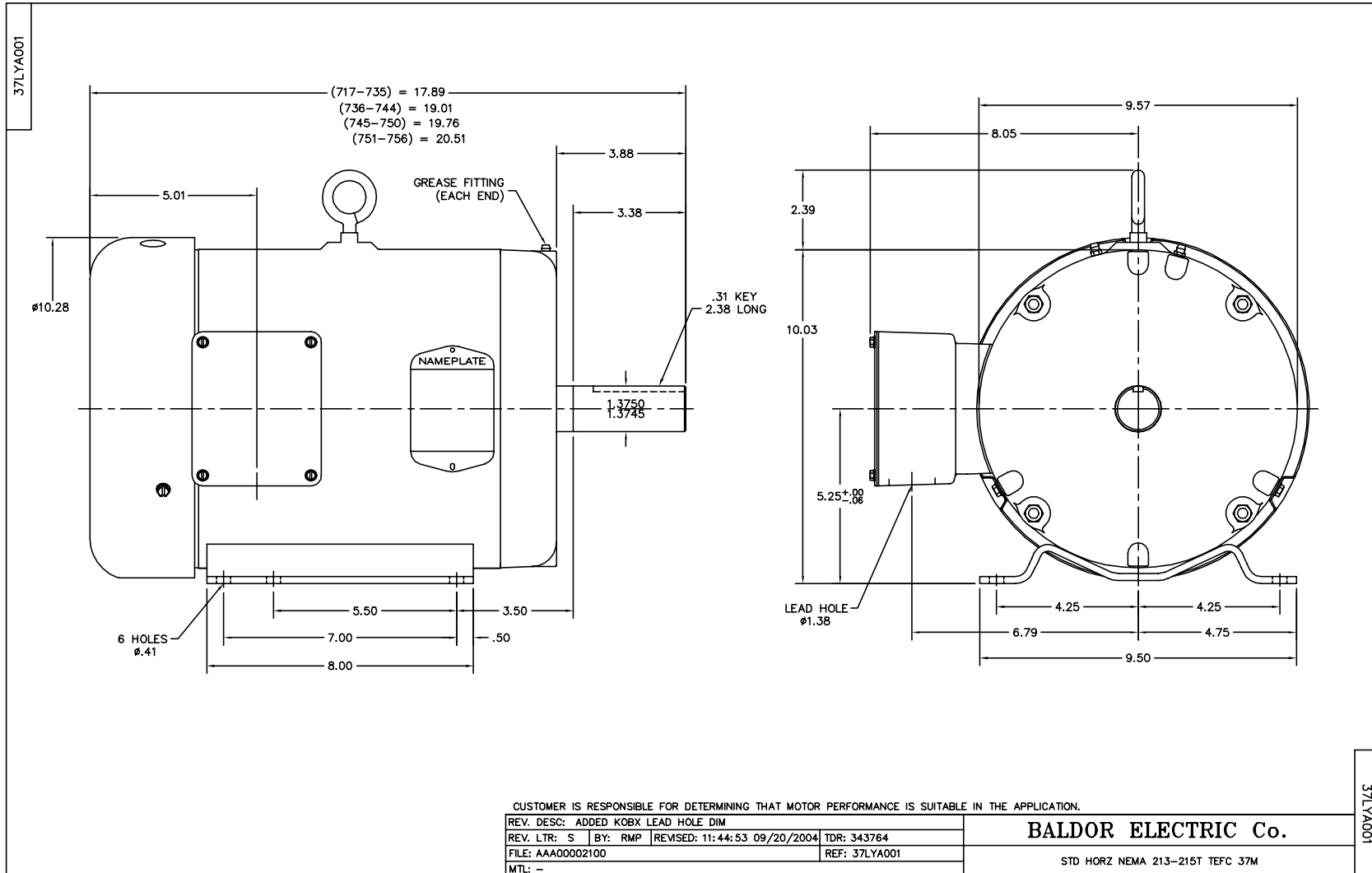
Nameplate Data				400 V, 50 Hz: Single Voltage Motor	
Rated Output (HP)	10			Full Load Torque	18 LB-FT
Volts	400			Start Configuration	direct on line
Full Load Amps	13.1			Breakdown Torque	63.8 LB-FT
R.P.M.	2900			Pull-up Torque	33.2 LB-FT
Hz	50	Phase	3	Locked-rotor Torque	38.4 LB-FT
NEMA Design Code	B	KVA Code	H	Starting Current	99.1 A
Service Factor (S.F.)	1.15			No-load Current	4.38 A
NEMA Nom. Eff.	90.2	Power Factor	89	Line-line Res. @ 25°C	0.662 Ω
Rating - Duty	40C AMB-CONT			Temp. Rise @ Rated Load	79°C
S.F. Amps				Temp. Rise @ S.F. Load	97°C
				Locked-rotor Power Factor	35.3
				Rotor inertia	0.364 LB-FT ²

Load Characteristics 400 V, 50 Hz, 10 HP

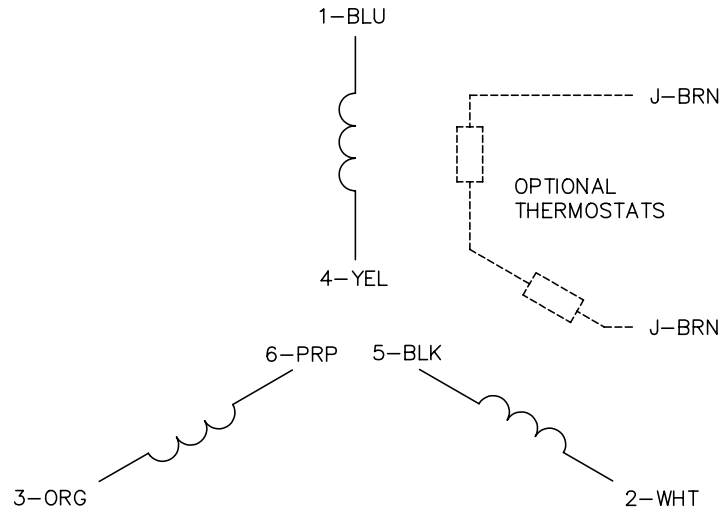
% of Rated Load	25	50	75	100	125	150	S.F.
Power Factor	54	76	86	89	90	91	90
Efficiency	91.4	93.7	93.2	92.5	90.9	89	91.5
Speed	2981	2957	2932	2905	2875	2840	2887
Line amperes	5.29	7.45	10	13.1	16.3	19.8	15

Performance Graph at 400V, 50Hz, 10.0HP Typical performance - Not guaranteed values

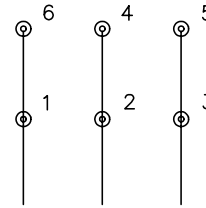




CD0382

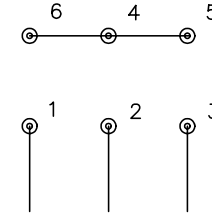


RUN CONNECTION
(1D)



LINE

START CONNECTION
(1Y)



LINE

NOTES:

1. INTERCHANGE ANY TWO LINE LEADS TO REVERSE ROTATION.
2. OPTIONAL THERMOSTATS ARE PROVIDED WHEN SPECIFIED.
3. ACTUAL NUMBER OF INTERNAL PARALLEL CIRCUITS MAY BE A MULTIPLE OF THOSE SHOWN ABOVE.
4. LEAD COLORS ARE OPTIONAL. LEADS MUST ALWAYS BE NUMBERED AS SHOWN.
5. FOR ACROSS-THE-LINE STARTING, USE 'RUN' CONNECTION.

REV. DESC: ADD NOTE 5 FOR DOL STARTING			
REV. LTR: E	BY: JLP	REVISED: 11/30/00 2:26	TDR: 0226155
CD0382		FILE: AAA00005243	REF: -
		MTL: -	

BALDOR ELECTRIC Co.

3PH, SV, 6 LEADS, Y START/D RUN

CD0382