

BALDOR® • *RELIANCE*

Product Information Packet

EM7014

1//.75HP,1760//1460RPM,3PH,60//50HZ,56,3

| Part Detail | | | | | | | |
|-------------|------|----------------|-------|-------------|----------|---------------|------------|
| Revision: | C | Status: | PRD/A | Change #: | | Proprietary: | No |
| Type: | AC | Prod. Type: | 3520M | Elec. Spec: | 35WGM492 | CD Diagram: | CD0005 |
| Enclosure: | XPFC | Mfg Plant: | | Mech. Spec: | 35E356 | Layout: | 35LYE356 |
| Frame: | 56 | Mounting: | F1 | Poles: | 04 | Created Date: | 09-01-2015 |
| Base: | RG | Rotation: | R | Insulation: | B | Eff. Date: | 12-09-2016 |
| Leads: | 9#18 | | | | | Replaced By: | |
| Literature: | | Elec. Diagram: | | | | | |

| Nameplate NP1426XPSLEV | |
|------------------------|------------------------------|
| NO. | <input type="text"/> CC 010A |
| SER. | <input type="text"/> |
| SPEC. | 35E356M492G1 |
| CAT.NO. | EM7014 |
| HP | 1//.75 T. CODE T3C |
| VOLTS | 230/460//190/380 |
| AMPS | 3/1.5//2.8/1.4 |
| RPM | 1760//1460 |
| HZ | 60//50 PH 3 CL B |
| SER.F. | 1.00 DES B CODE L |
| RATING | 40C AMB-CONT |
| FRAME | 56 NEMA-NOM-EFF 85.5 |
| USABLE AT 208V | 3.1 PF 71 |
| BLANK | <input type="text"/> |

| Parts List | | |
|---------------|--|----------|
| Part Number | Description | Quantity |
| SA306829 | SA 35E356M492G1 | 1.000 EA |
| RA294097 | RA 35E356M492G1 | 1.000 EA |
| 35CB3001A01SP | EXPL CONDUIT BOX, MACH, 1/2" PIPE TAP LE | 1.000 EA |
| 11XW1032G06 | 10-32 X .38, TAPTITE II, HEX WSHR SLTD U | 1.000 EA |
| HW3001B01 | BRASS CUP WASHER, FOR #8 SCREW | 1.000 EA |
| 35EP3700A01SP | FR ENDPLATE, XPFC | 1.000 EA |
| HW5100A03SP | WAVY WASHER (W1543-017) | 1.000 EA |
| 35EP3701A01 | PU ENDPLATE, XPFC - 205 BRG | 1.000 EA |
| XY3118A12 | 5/16-18 HEX NUT DIRECTIONAL SERRATION | 4.000 EA |
| 51XB1214A16 | 12-14X1.00 HXWSSLD SERTYB | 1.000 EA |
| 35FH4005A01SP | IEC FH NO GREASER W/PRIMED | 1.000 EA |
| 51XW1032A06 | 10-32 X .38, TAPTITE II, HEX WSHR SLTD S | 3.000 EA |
| 35CB3500A01SP | CONDUIT BOX LID, MACH | 1.000 EA |
| 51XN2520A16 | SCREW, HEX WS SLT, ZN, 1/4-20 X 1.00 | 4.000 EA |
| HW2501D13 | KEY, 3/16 SQ X 1.375 | 1.000 EA |
| HA7000A04 | KEY RETAINER 0.625 DIA SHAFTS | 1.000 EA |
| 85XU0407S04 | 4X1/4 U DRIVE PIN STAINLESS | 6.000 EA |
| NP0018F | ALUM UL XP CONDUIT BOX NAMEPLATE | 1.000 EA |
| MJ1000A02 | GREASE, POLYREX EM EXXON (USe 4824-15A) | 0.050 LB |
| 35FN3002A05 | EXFN, PLASTIC, 6.376 OD, .638 ID | 1.000 EA |
| MG1025G29 | WILKOFASST, 789.229, DARK CHARCOAL GRAY | 0.017 GA |
| HA3104A06 | THRUBOLT 5/16-18 X 8.50 OHIO ROD | 4.000 EA |
| LB1119N | WARNING LABEL | 1.000 EA |
| LC0145B01 | CONNECTION LABEL | 1.000 EA |

| Parts List (continued) | | |
|-------------------------------|--|-----------------|
| Part Number | Description | Quantity |
| NP1426XPSLEV | SS XP UL CSA-EEV CC CL-I GP-D | 1.000 EA |
| 36PA1000 | PKG GRP, PRINT PK1016A06 | 1.000 EA |
| MN416A01 | TAG-INSTAL-MAINT no wire (1000/bx) 11/14 | 1.000 EA |

AC Induction Motor Performance Data

Record # 33669 - Typical performance - not guaranteed values

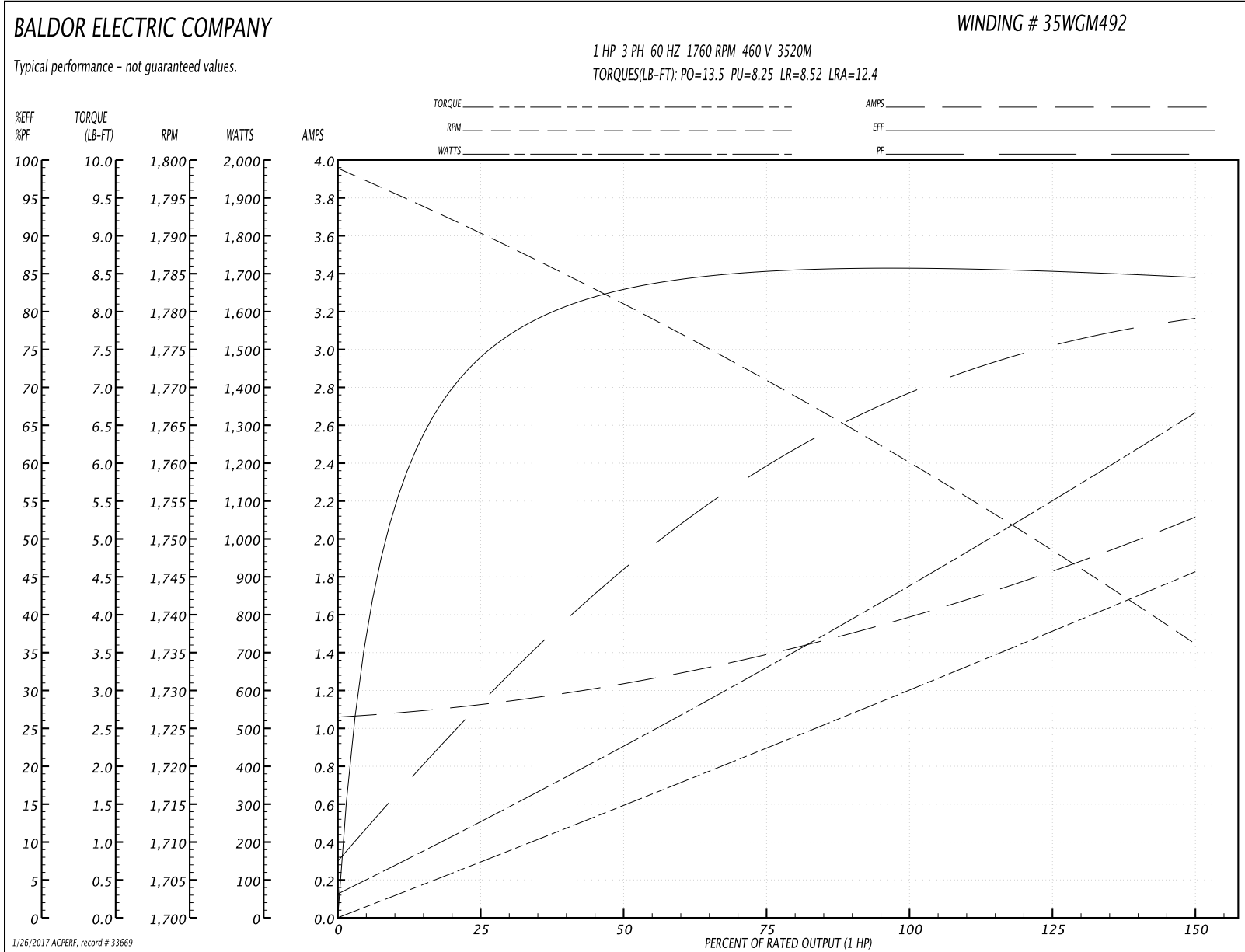
| | | |
|-------------------------------|--------------------|------------------------|
| Winding: 35WGM492-R005 | Type: 3520M | Enclosure: XPFC |
|-------------------------------|--------------------|------------------------|

| Nameplate Data | | | | 460 V, 60 Hz: High Voltage Connection | |
|-----------------------|------------------|--------------|----|--|--------------------------|
| Rated Output (HP) | 1//.75 | | | Full Load Torque | 2.99 LB-FT |
| Volts | 230/460//190/380 | | | Start Configuration | direct on line |
| Full Load Amps | 3/1.5//2.8/1.4 | | | Breakdown Torque | 13.5 LB-FT |
| R.P.M. | 1760//1460 | | | Pull-up Torque | 8.25 LB-FT |
| Hz | 60//50 | Phase | 3 | Locked-rotor Torque | 8.52 LB-FT |
| NEMA Design Code | B | KVA Code | L | Starting Current | 12.4 A |
| Service Factor (S.F.) | 1 | | | No-load Current | 1.07 A |
| NEMA Nom. Eff. | 85.5 | Power Factor | 71 | Line-line Res. @ 25°C | 15 Ω |
| Rating - Duty | 40C AMB-CONT | | | Temp. Rise @ Rated Load | 36°C |
| | | | | Locked-rotor Power Factor | 53.8 |
| | | | | Rotor inertia | 0.118 LB-FT ² |

Load Characteristics 460 V, 60 Hz, 1 HP

| % of Rated Load | 25 | 50 | 75 | 100 | 125 | 150 |
|-----------------|------|------|------|------|------|------|
| Power Factor | 29 | 46 | 60 | 69 | 75 | 79 |
| Efficiency | 74.2 | 82.9 | 85.4 | 85.8 | 85.4 | 84.5 |
| Speed | 1790 | 1781 | 1771 | 1760 | 1749 | 1736 |
| Line amperes | 1.11 | 1.24 | 1.39 | 1.59 | 1.83 | 2.11 |

Performance Graph at 460V, 60Hz, 1.0HP Typical performance - Not guaranteed values



AC Induction Motor Performance Data

Record # 33670 - Typical performance - not guaranteed values

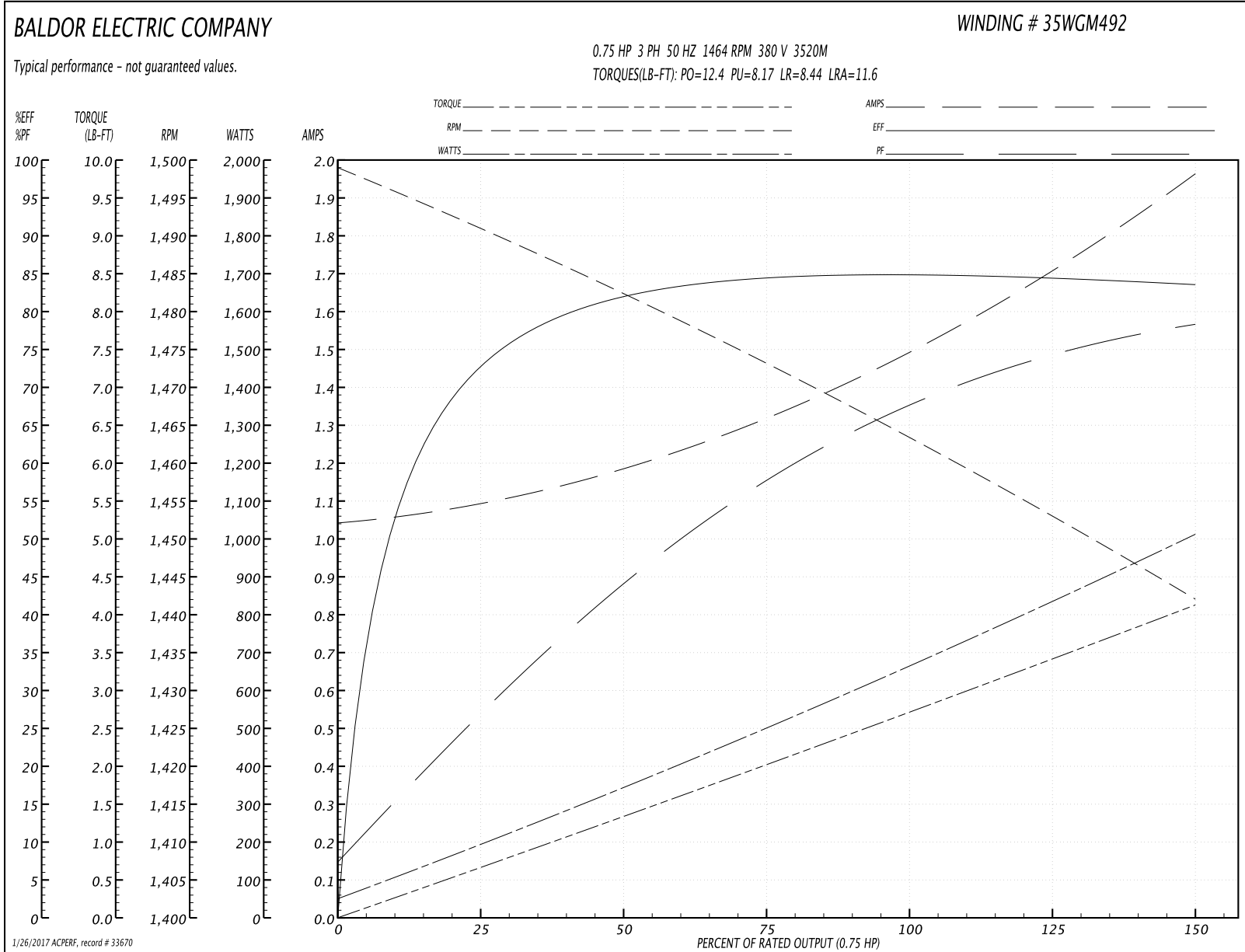
| | | |
|-------------------------------|--------------------|------------------------|
| Winding: 35WGM492-R005 | Type: 3520M | Enclosure: XPFC |
|-------------------------------|--------------------|------------------------|

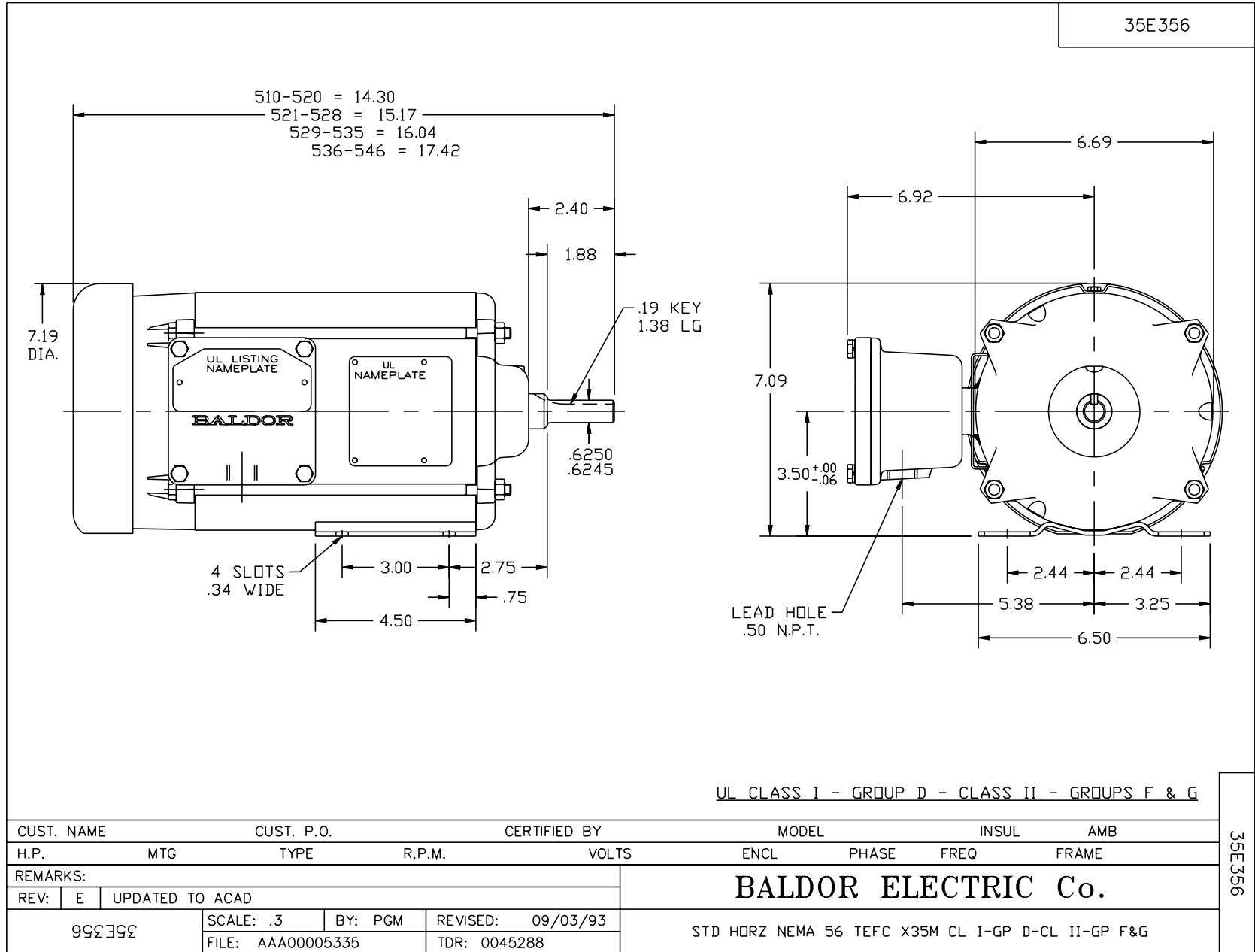
| Nameplate Data | | | | 380 V, 50 Hz: High Voltage Connection | |
|-----------------------|------------------|--------------|----|--|--------------------------|
| Rated Output (HP) | 1//.75 | | | Full Load Torque | 2.7 LB-FT |
| Volts | 230/460//190/380 | | | Start Configuration | direct on line |
| Full Load Amps | 3/1.5//2.8/1.4 | | | Breakdown Torque | 12.4 LB-FT |
| R.P.M. | 1760//1460 | | | Pull-up Torque | 8.17 LB-FT |
| Hz | 60//50 | Phase | 3 | Locked-rotor Torque | 8.44 LB-FT |
| NEMA Design Code | B | KVA Code | L | Starting Current | 11.6 A |
| Service Factor (S.F.) | 1 | | | No-load Current | 1.05 A |
| NEMA Nom. Eff. | 85.5 | Power Factor | 71 | Line-line Res. @ 25°C | 15 Ω |
| Rating - Duty | 40C AMB-CONT | | | Temp. Rise @ Rated Load | 32°C |
| | | | | Locked-rotor Power Factor | 59.5 |
| | | | | Rotor inertia | 0.118 LB-FT ² |

Load Characteristics 380 V, 50 Hz, 0.75 HP

| % of Rated Load | 25 | 50 | 75 | 100 | 125 | 150 |
|-----------------|------|------|------|------|------|------|
| Power Factor | 28 | 44 | 58 | 67 | 74 | 79 |
| Efficiency | 73.1 | 81.9 | 84.4 | 85 | 84.5 | 83.5 |
| Speed | 1491 | 1482 | 1473 | 1464 | 1453 | 1442 |
| Line amperes | 1.08 | 1.19 | 1.32 | 1.49 | 1.71 | 1.96 |

Performance Graph at 380V, 50Hz, 0.75HP Typical performance - Not guaranteed values

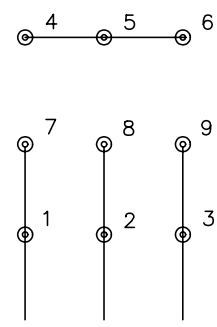




CD0005

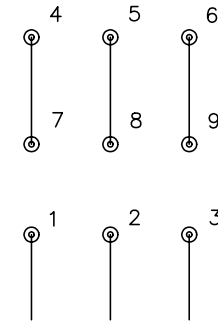


LOW VOLTAGE
(2Y)



LINE

HIGH VOLTAGE
(1Y)



LINE

NOTES:

1. INTERCHANGE ANY TWO LINE LEADS TO REVERSE ROTATION.
2. OPTIONAL THERMOSTATS ARE PROVIDED WHEN SPECIFIED.
3. ACTUAL NUMBER OF INTERNAL PARALLEL CIRCUITS MAY BE A MULTIPLE OF THOSE SHOWN ABOVE.
4. LEAD COLORS ARE OPTIONAL. LEADS MUST ALWAYS BE NUMBERED AS SHOWN.

| | | | |
|---|---------|-------------------------|--------------|
| REV. DESC: REVISE TO SHOW OPTIONAL COLORS | | | |
| REV. LTR: E | BY: JLP | REVISED: 01/19/99 10:15 | TDR: 0171435 |
| 900000 | | FILE: AAA00005140 | MDL: - |
| | | MTL: - | |

BALDOR ELECTRIC Co.

3PH, DV, 9 LEADS

CD0005