

BALDOR® • RELIANCE

Product Information Packet

JML1511T

10HP,3450RPM,1PH,60HZ,215JM,3740L,OPEN,F

Part Detail							
Revision:	J	Status:	PRD/A	Change #:		Proprietary:	No
Type:	AC	Prod. Type:	3740L	Elec. Spec:	37WG047	CD Diagram:	CD0017A01
Enclosure:	OPEN	Mfg Plant:		Mech. Spec:	37K266	Layout:	37LYK266
Frame:	215JM	Mounting:	F1	Poles:	02	Created Date:	03-08-2007
Base:	RG	Rotation:	R	Insulation:	F	Eff. Date:	09-14-2015
Leads:	2#8 A PH,2#14 B PH					Replaced By:	
Literature:		Elec. Diagram:					

Nameplate NP1256L										
CAT.NO.	JML1511T									
SPEC.	37K266X047G1									
HP	10									
VOLTS	230									
AMP	46									
RPM	3450									
FRAME	215JM				HZ	60			PH	1
SER.F.	1.15		CODE	G	DES	L		CLASS	F	
NEMA-NOM-EFF	83		PF	86						
RATING	40C AMB-CONT									
CC								USABLE AT 208V	48	
DE	6309				ODE	6206				
ENCL	OPEN		SN							

Parts List		
Part Number	Description	Quantity
SA155065	SA 37K266X047G1	1.000 EA
RA143722	RA 37K266X047G1	1.000 EA
HA6361A01	LIFTING LUG FOR 37, 39 & 40 FRAME ZINC	2.000 EA
37CB3006	37 CB CASTING W/1.38 LEAD HOLE @ 6:00	1.000 EA
51XW2520A12	.25-20 X .75, TAPTITE II, HEX WSHR SLTD	2.000 EA
11XW1032G06	10-32 X .38, TAPTITE II, HEX WSHR SLTD U	1.000 EA
37FE3200A15	FR ENDPLATE MACH	1.000 EA
HW4500A01	1641B(ALEMITE)400 UNIV, GREASE FITT	1.000 EA
HW4500A17	317400 ALEMITE GREASE RELIEF	1.000 EA
HA1104A01	RODENT SCREEN 37 FRAME 206 BRG FRONT END	1.000 EA
51XW1032A06	10-32 X .38, TAPTITE II, HEX WSHR SLTD S	4.000 EA
HW1000A10	#10 FLAT WASHER (SAE)	4.000 EA
HW1000A10	#10 FLAT WASHER (SAE)	4.000 EA
SP1008A01	BAFFLE, MODEL 36 & 37	1.000 EA
13XF0832A08	8-32 X.50 PAN HD,SLTD, TYPE F SCREW, ZIN	2.000 EA
10XN2520A12	O1/4-20X 3/4 HEX HEAD CAP	2.000 EA
HW5100A06	W2420-025 WVY WSHR (WB)	1.000 EA
37EP3401A18	PUEP OPEN 309 BRG W/BAFFLE, GRS, REL, MF	1.000 EA
37AD2000A02	BAFFLE PLATE, STAMPED PLATED	1.000 EA
60XW0632A06	6-32 X 3/8 TORX HEAD SCREW TAPTITE II	4.000 EA
HW4500A01	1641B(ALEMITE)400 UNIV, GREASE FITT	1.000 EA
HW4500A17	317400 ALEMITE GREASE RELIEF	1.000 EA
HA1222	RODENT SCREEN - 37 C-FACE MOTORS	4.000 EA
51XW1032A06	10-32 X .38, TAPTITE II, HEX WSHR SLTD S	4.000 EA

Parts List (continued)		
Part Number	Description	Quantity
10XN2520A36	1/4-20X 2 1/4 HEX HD X	4.000 EA
HW1001A25	LOCKWASHER 1/4, ZINC PLT .493 OD, .255 I	4.000 EA
XY3118A12	5/16-18 HEX NUT DIRECTIONAL SERRATION	4.000 EA
HW4600A73	SLINGER 1.748 X 2.375 X 0.250 FACE SEAL	1.000 EA
37CB4516	LIPPED LID FOR 37 FRAME NEC KOBX	1.000 EA
51XW0832A07	8-32 X .44, TAPTITE II, HEX WSHR SLTD SE	4.000 EA
HW2501D13	KEY, 3/16 SQ X 1.375	1.000 EA
HA7000A01	KEY RETAINER 7/8" DIA SHAFT	1.000 EA
85XU0407S04	4X1/4 U DRIVE PIN STAINLESS	2.000 EA
LB1115N	LABEL,LIFTING DEVICE (ON ROLLS)	1.000 EA
MJ1000A02	GREASE, POLYREX EM EXXON (USe 4824-15A)	0.050 LB
MG1000G27	MED CHARCOAL METALLIC GREY 400-0096	0.028 GA
SP5172A01	37 TYPE L TORQ STAT SWITCH LEAD ASSEMBLY	1.000 EA
37CB5007A01	CAPACITOR BOX KIT, 37CB3802, 3 EC1216C0	1.000 EA
HA3104A35	THRUBOLT .31-18 X 13.687	4.000 EA
LB1119N	WARNING LABEL	1.000 EA
LC0017	CONN LABEL-1 PHASE-SINGLE VOLT-REV ROTNO	1.000 EA
NP1256L	ALUM UL CSA CC	1.000 EA
G0PA1000	PKG GRP, PRINT PK1026A06	1.000 EA
MN416A01	TAG-INSTAL-MAINT no wire (1200/bx) 11/14	1.000 EA

AC Induction Motor Performance Data

Record # 11971 - Typical performance - not guaranteed values

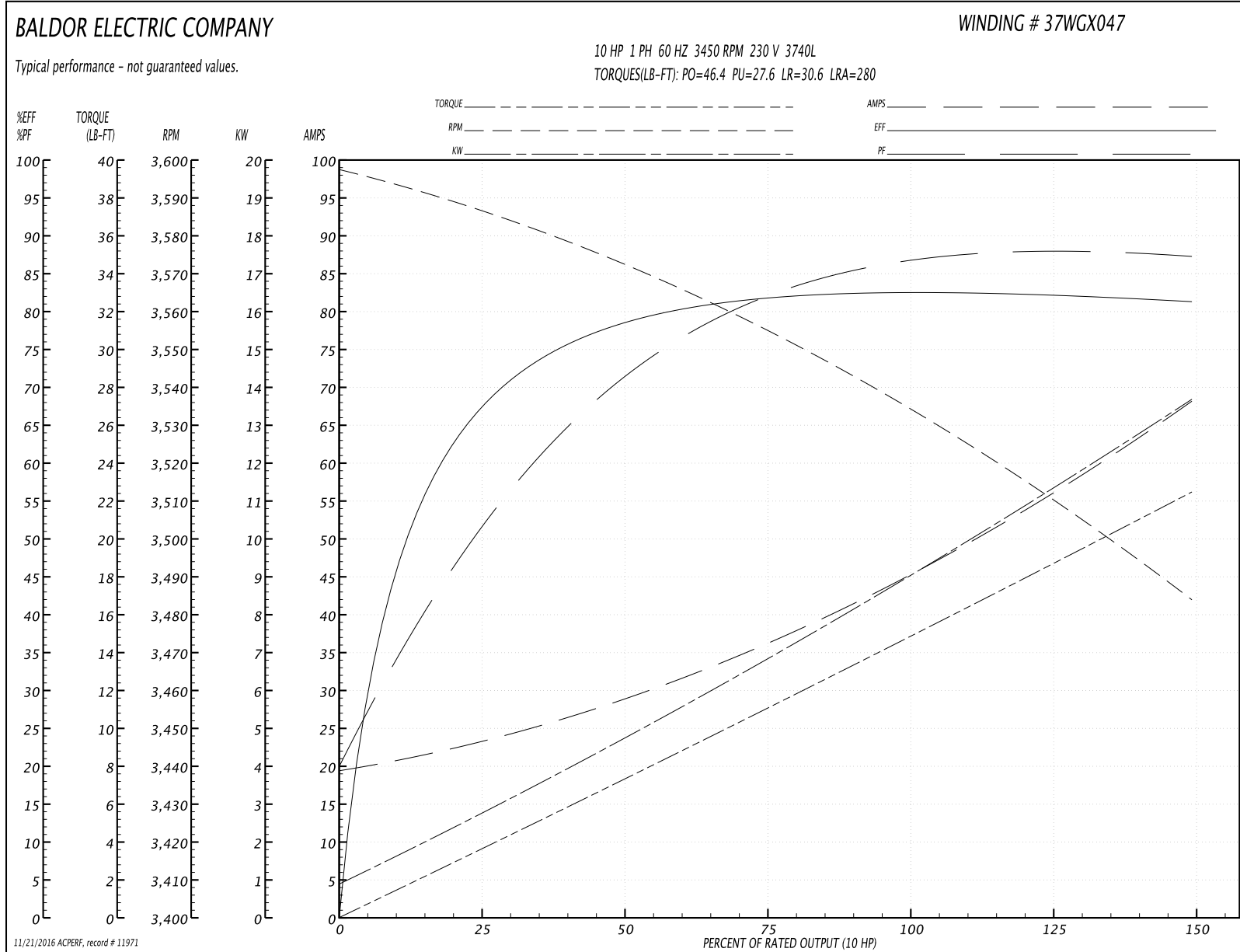
Winding: 37WGX047-R001	Type: 3740L	Enclosure: OPEN
-------------------------------	--------------------	------------------------

Nameplate Data				230 V, 60 Hz: Single Voltage Motor	
Rated Output (HP)	10			Full Load Torque	15 LB-FT
Volts	230			Start Configuration	direct on line
Full Load Amps	46			Breakdown Torque	46.4 LB-FT
R.P.M.	3450			Pull-up Torque	27.6 LB-FT
Hz	60	Phase	1	Locked-rotor Torque	30.6 LB-FT
NEMA Design Code	L	KVA Code	G	Starting Current	280 A
Service Factor (S.F.)	1.15			No-load Current	19.3 A
NEMA Nom. Eff.	83	Power Factor	86	Line-line Res. @ 25°C	0.163 Ω A Ph 0.728 Ω B Ph
Rating - Duty	40C AMB-CONT			Temp. Rise @ Rated Load	100°C
S.F. Amps				Temp. Rise @ S.F. Load	115°C

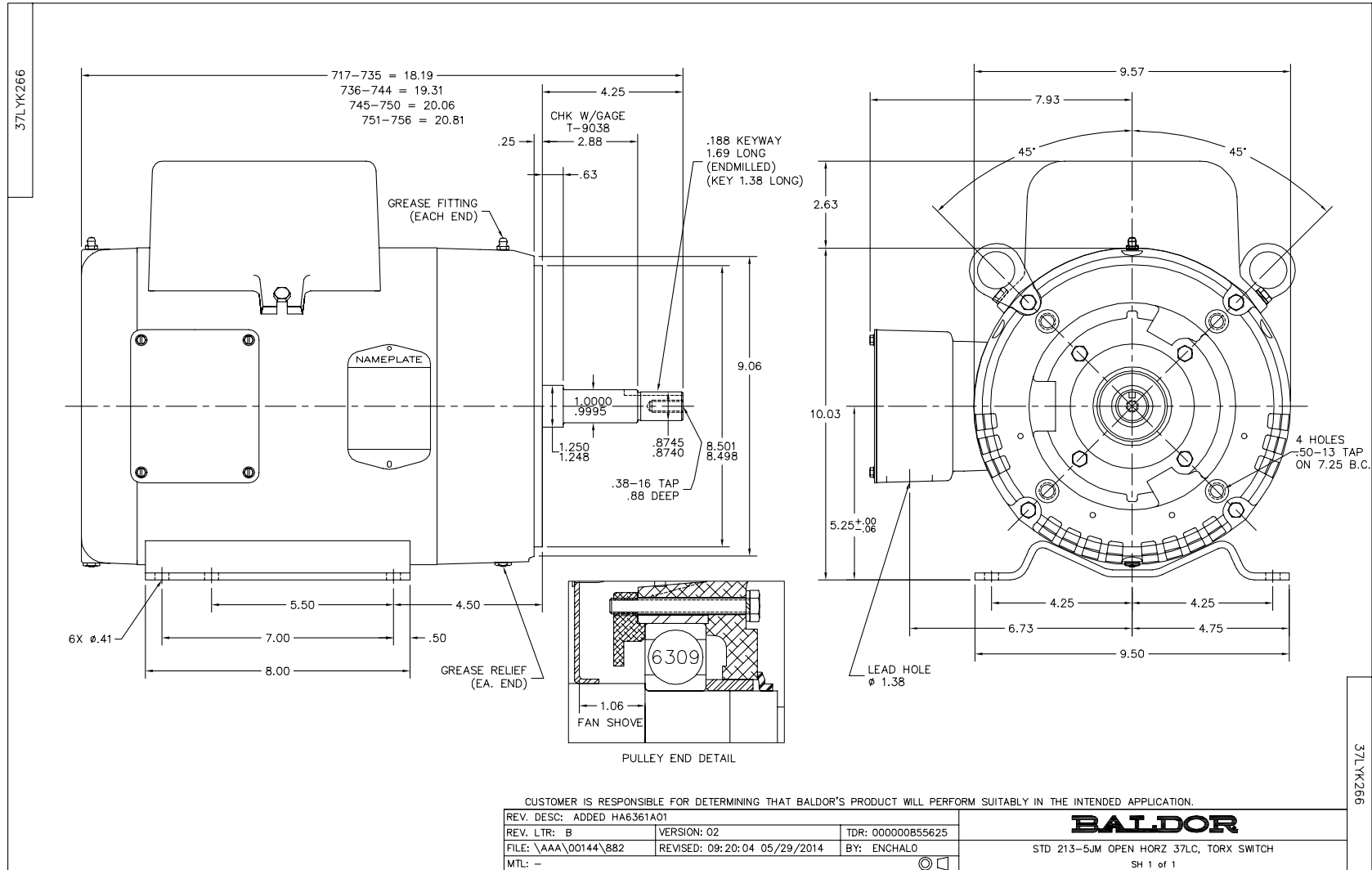
Load Characteristics 230 V, 60 Hz, 10 HP

% of Rated Load	25	50	75	100	125	150	S.F.
Power Factor	56	72	82	86	88	87	87
Efficiency	63	79.3	81.1	83.7	82.8	80.7	83.2
Speed	3587	3570	3552	3536	3512	3482	3522
Line amperes	23.5	29	37.2	45.5	55.6	68.6	51.6

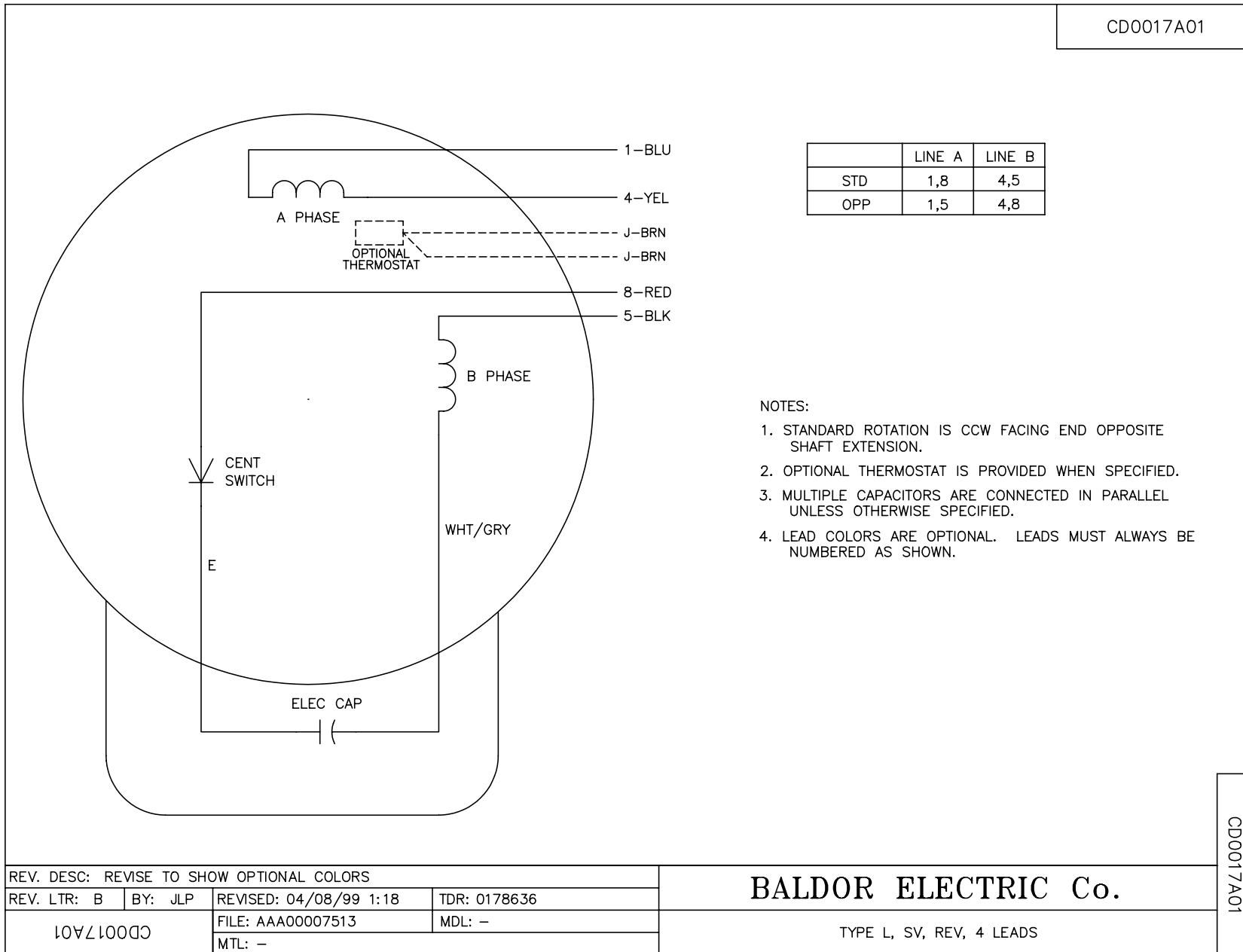
Performance Graph at 230V, 60Hz, 10.0HP Typical performance - Not guaranteed values



11/21/2016 ACPERF, record # 11971



CDO017A01



REV. DESC: REVISE TO SHOW OPTIONAL COLORS			
REV. LTR: B	BY: JLP	REVISED: 04/08/99 1:18	TDR: 0178636
CDO017A01		FILE: AAA00007513	MDL: -
		MTL: -	

BALDOR ELECTRIC Co.

TYPE L, SV, REV, 4 LEADS

CDO017A01