



BALDOR® • RELIANCE

Product Information Packet

JSM3155

2HP,3450RPM,3PH,60HZ,56YZ,3430M,OPEN,F1

Part Detail							
Revision:	G	Status:	PRD/A	Change #:		Proprietary:	No
Type:	AC	Prod. Type:	3430M	Elec. Spec:	34WGX636	CD Diagram:	CD0005
Enclosure:	OPEN	Mfg Plant:		Mech. Spec:	34L408	Layout:	34LYL408
Frame:	56YZ	Mounting:	F1	Poles:	02	Created Date:	08-05-2009
Base:	N	Rotation:	R	Insulation:	B	Eff. Date:	06-27-2016
Leads:	9#18					Replaced By:	
Literature:		Elec. Diagram:					

Nameplate NP1256L										
CAT.NO.	JSM3155									
SPEC.	34L408X636									
HP	2									
VOLTS	230/460									
AMP	5.4/2.7									
RPM	3450									
FRAME	56YZ				HZ	60			PH	3
SER.F.	1.20		CODE	L	DES	B		CLASS	B	
NEMA-NOM-EFF	82.5		PF	86						
RATING	40C AMB-CONT									
CC								USABLE AT 208V	6.4	
DE	6203				ODE	6203				
ENCL	OPEN		SN							
	SFA 6.2/3.1									

Parts List		
Part Number	Description	Quantity
SA184374	SA 34L408X636	1.000 EA
RA172213	RA 34L408X636	1.000 EA
WD4100A01	DP-875 HEYCO PLUG OR 62MP0875 MICRO PLAS	1.000 EA
11XT0832G06	8-32 X 3/8 TY 23 TAPPING	1.000 EA
SP1000A01	TERM BOARD, MODEL 34 SW	1.000 EA
51XW0832A07	8-32 X .44, TAPTITE II, HEX WSHR SLTD SE	3.000 EA
RM1010A12	.437 I.D. 1" VINYL CAP (SHORT) MOCAP	1.000 EA
34EP3202A02	FR ENDPLATE, MACH	1.000 EA
HW5100A03SP	WAVY WASHER (W1543-017)	1.000 EA
34EP3501A14E	ENDPLATE, MACH W/BLACK E-COATING	1.000 EA
51XN1032A20	10-32 X 1 1/4 HX WS SL SR	2.000 EA
34AD2007	BAFFLE PLATE INJECTION MOLD	1.000 EA
51XT0632A06	6-32X3/8 TY23 HXWS SLDSR	4.000 EA
34FH4500A02P	DRIPCOVER, MODEL 34	1.000 EA
51XW0832A07	8-32 X .44, TAPTITE II, HEX WSHR SLTD SE	2.000 EA
34CB4501SP	TERMINAL BOX LID, STAMPED X (PLATED)	1.000 EA
51XW0832A07	8-32 X .44, TAPTITE II, HEX WSHR SLTD SE	2.000 EA
51XW0832A07	8-32 X .44, TAPTITE II, HEX WSHR SLTD SE	2.000 EA
HW1000A10	#10 FLAT WASHER (SAE)	8.000 EA
MG1000G27	MED CHARCOAL METALLIC GREY 400-0096	0.014 GA
MG1500Y02	PRIMER,347.29+347.29C ACTIVATOR WILKOPON	0.014 GA
10XF0440S02	04-40 X 1/8 TYPE F HEX HD STAINLESS STIC	2.000 EA
HA3100A25	THRUBOLT 10-32 X 11.000	4.000 EA
MN416A01	TAG-INSTAL-MAINT no wire (1200/bx) 11/14	1.000 EA

Parts List (continued)		
Part Number	Description	Quantity
LC0005E01	CONN.DIA./WARNING LABEL (LC0005/LB1119N)	1.000 EA
NP1256L	ALUM UL CSA CC	1.000 EA
35PA1000	PKG GRP, PRINT PK1008A06	1.000 EA
PK3083T	STYROFOAM PACKING CRADLE W/TAPE	1.000 EA

AC Induction Motor Performance Data

Record # 7504 - Typical performance - not guaranteed values

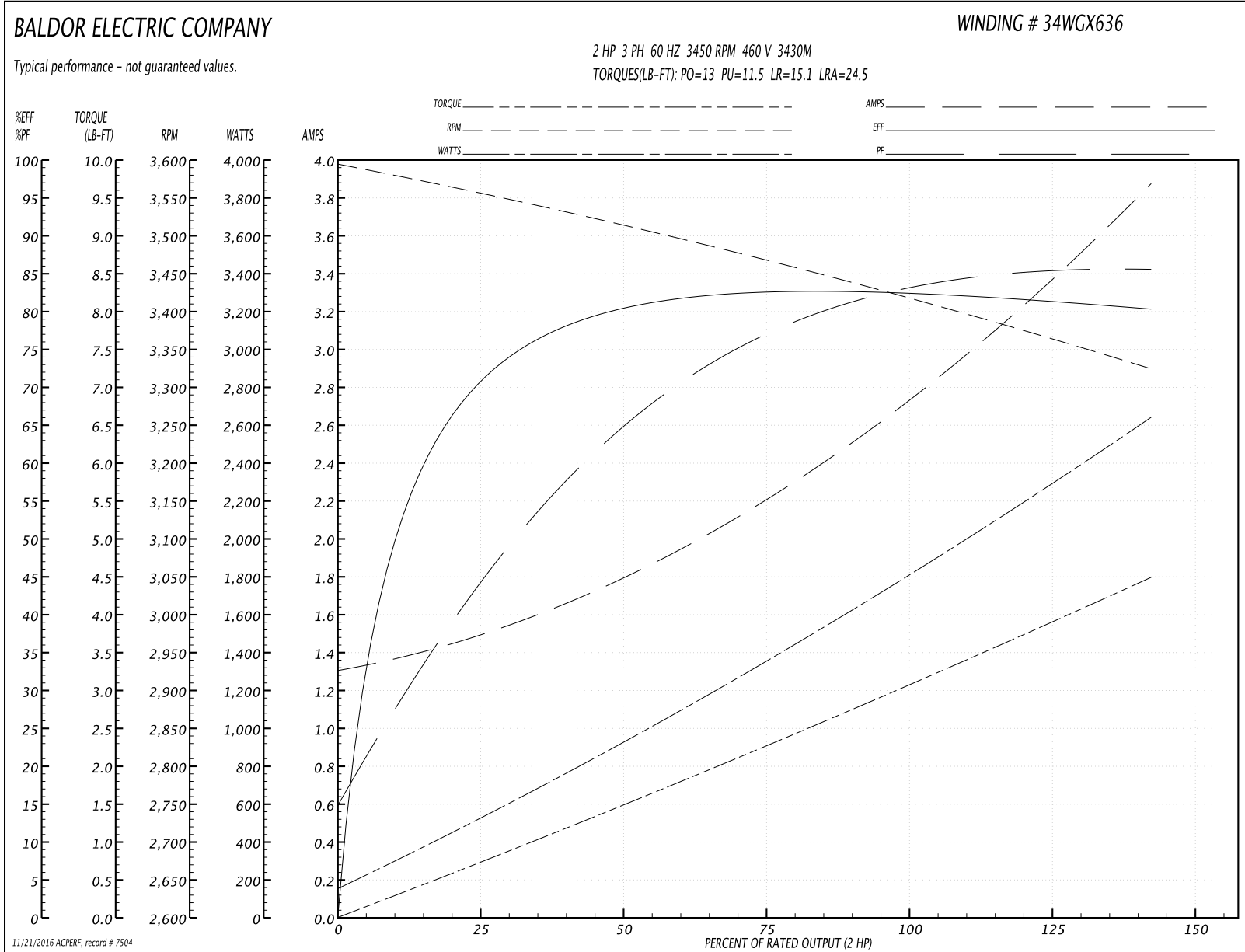
Winding: 34WGX636-R001	Type: 3430M	Enclosure: OPSB
-------------------------------	--------------------	------------------------

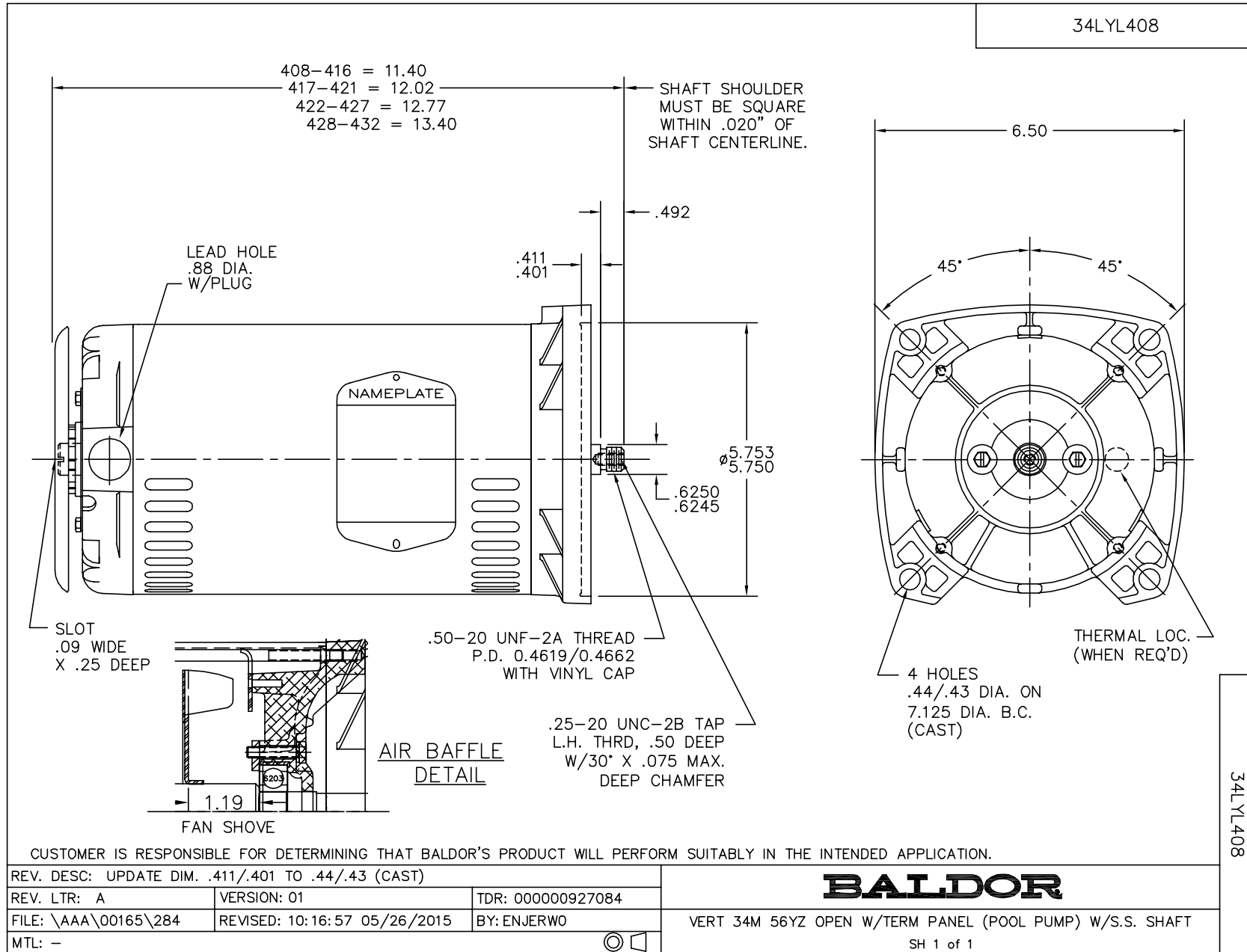
Nameplate Data				460 V, 60 Hz: High Voltage Connection	
Rated Output (HP)	2			Full Load Torque	3 LB-FT
Volts	230/460			Start Configuration	direct on line
Full Load Amps	5.4/2.7			Breakdown Torque	13 LB-FT
R.P.M.	3450			Pull-up Torque	11.5 LB-FT
Hz	60	Phase	3	Locked-rotor Torque	15.1 LB-FT
NEMA Design Code	B	KVA Code	L	Starting Current	24.5 A
Service Factor (S.F.)	1.2			No-load Current	1.3 A
NEMA Nom. Eff.	82.5	Power Factor	86	Line-line Res. @ 25°C	6.24 Ω
Rating - Duty	40C AMB-CONT			Temp. Rise @ Rated Load	42°C
S.F. Amps	6.2/3.1			Temp. Rise @ S.F. Load	52°C

Load Characteristics 460 V, 60 Hz, 2 HP

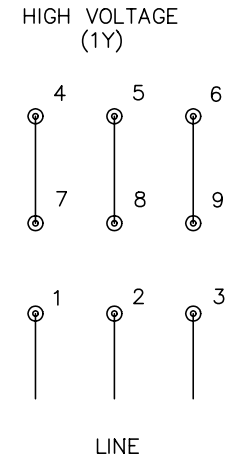
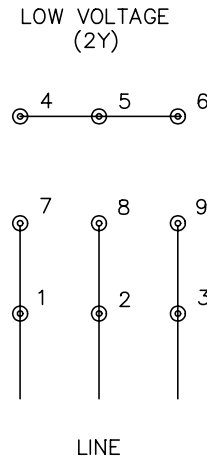
% of Rated Load	25	50	75	100	125	150	S.F.
Power Factor	51	70	80	86	90	92	89
Efficiency	71.7	80	82.3	82.6	81.8	80.2	82
Speed	3550	3511	3470	3427	3376	3321	3386
Line amperes	1.5	1.8	2.2	2.7	3.2	3.9	3.1

Performance Graph at 460V, 60Hz, 2.0HP Typical performance - Not guaranteed values





CD0005



NOTES:

1. INTERCHANGE ANY TWO LINE LEADS TO REVERSE ROTATION.
2. OPTIONAL THERMOSTATS ARE PROVIDED WHEN SPECIFIED.
3. ACTUAL NUMBER OF INTERNAL PARALLEL CIRCUITS MAY BE A MULTIPLE OF THOSE SHOWN ABOVE.
4. LEAD COLORS ARE OPTIONAL. LEADS MUST ALWAYS BE NUMBERED AS SHOWN.

REV. DESC: REVISE TO SHOW OPTIONAL COLORS			
REV. LTR: E	BY: JLP	REVISED: 01/19/99 10:15	TDR: 0171435
9000D		FILE: AAA00005140	MDL: -
		MTL: -	

BALDOR ELECTRIC Co.

3PH, DV, 9 LEADS

CD0005