

Series OGVF & OGVH

Submersible Grinder
2HP, 60Hz, 3450RPM

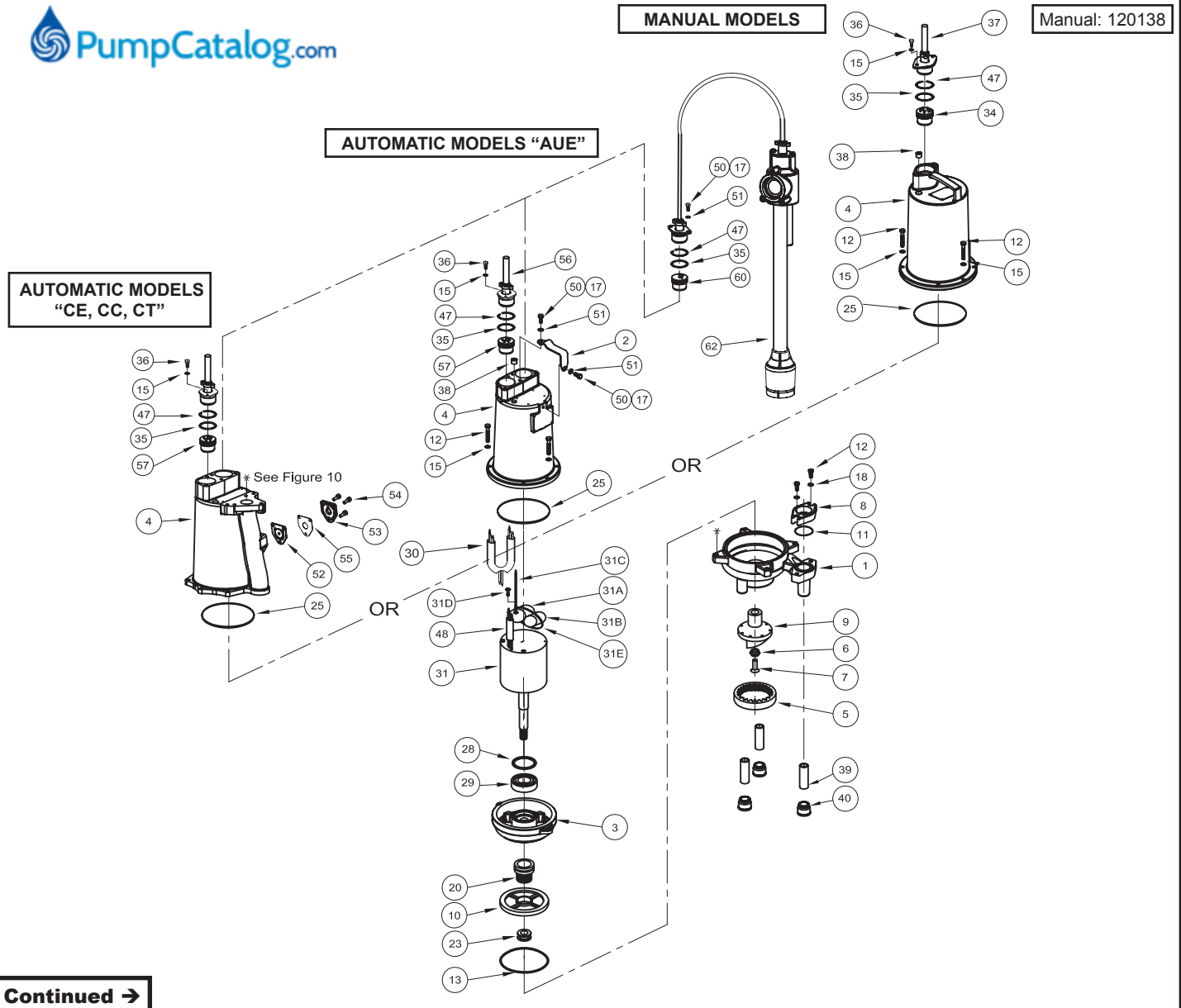
Questions? Call **1-800-810-1053**

BARNES®

www.cranepumps.com

BARNES • PROSSER • CROWN SERVICE PARTS

MODEL	PART NO.
OGVH2022L	110649
OGVH2022AUE	116896
OGVH2022CE	130724
OGVH2022CC	Not yet Available
OGVH2022CT	Not yet Available
OGVF2022L	110651
OGVF2022AUE	116892
OGVF2022CE	119973
OGVF2022CC	Not yet Available
OGVF2022CT	Not yet Available



Continued →

SECTION 3B
PAGE 32
DATE 2/11



A Crane Co. Company

PUMPS & SYSTEMS Order Online: www.PumpCatalog.com

USA: (937) 778-8947 • Canada: (905) 457-6223 • International: (937) 615-3598

BARNES • PROSSER • CROWN SERVICE PARTS

PARTS KITS

Seal Repair Kit.....P/N: 108303
Cutter KitP/N: 108330

Item #'s 6,7,13,14,15,19,20,21,25,26,27,32,35,47
Item #'s 5,6,7,9,15,19,23

PARTS LIST

ITEM	QTY	PART NO.	DESCRIPTION
1	1	108344 118246	Volute Volute (CE, CC, CT)
2	1	110331	Handle (AU model)
3	1	108343	Seal Plate
4	1	108342 110328 118256	Motor Housing (STD) Motor Housing (AU model) Motor Housing (CE, CC, CT)
5	1	082085A 082085B	Shredding Ring (OGVF) Shredding Ring (OGVH)
6	1	067556	Washer
7	1	070704	Skhd Screw, 1/4-20 x .75" SS
8	1	108369 †	Discharge Flange 1-1/4" NPT
9	1	082088	Radial Cutter
10	1	109026B 109026BTD	Impeller, 5.62" Dia. (OGVH) Impeller, 5.13" Dia. (OGVF)
11	1	625-01558	O-Ring (-223)
12	4	1-131-1 †	Screw, 5/16-18 x 1.25" SS
13	1	067564	Square Ring
15	14	026322	Lockwasher, 5/16" SS
16	A/R	-----	LOCTITE™ RC609
17	A/R	-----	LOCTITE 242
18	2	062941 †	5/16" Flatwasher
20	1	110395SD	Seal, outer Silicon-Carbide (STD)
22	A/R	-----	Permatex Sealent 2C
23	1	016079	Shim set
24	3 Qts.	029034	Cooling Oil - Mtr. Housing
25	1	095368	Square Ring
26	4	1-300-1	Screw, 5/16-18 x 1.25", SS
28	1	061143	Retaining Ring
29	1	Q10-36-E4	Ball Bearing
30	1	113287	Wiring Harness (Automatic)
31	1	108368A**	Motor, 2HP, 240 Volt, 1 Phase w/capacitors & Ground wire
31A	1	115327A-RC	Capacitor, Run
31B	1	115327A-SC	Capacitor, Start
31C	1	105111B	Ground wire
31D	1	016660	Screw, Self-Tap #8-32 x .31"
31E	6	039462	Cable tie strap
34	1	103760	Terminal Block, Power, Manual
35	1 or 2	2-31051-224	O-Ring
36	2	1-156-1	Screw, 5/16-18 x 1.00" SS
37	1	109498XC 109498	12/3 Cord Set, 30Ft 12/3 Cord Set, 15Ft (CE, CC, CT)

ITEM	QTY	PART NO.	DESCRIPTION
37A	1	103582	Compression Flange
38	1	014270	Pipe Plug, C'sunk, 3/8" NPT
39	3	110660	1/2" x 2-1/2" Nipple
40	3	111328	1/2" x 1" Reducer
47	1 or 2	105197	Retaining Ring
48	1 or 2	625-02117	Sleeving
* Models with ESPS Level Control			
50	4	1-156-1	Screw, 5/16-18 x .1" SS
51	4	026322	Lockwasher, 5/16" SS
52	1	119104B	Gasket
53	1	112422	Anti-Siphon Cover
54	3	03121-B	HxHd Screw 1/4-20 x .75" SS
55	1	105377B	Anti-Siphon Cover Plate
56	1	113274XC 113274 EcoTRAN	12/5 Cord Set 30Ft.- (AU) 12/5 Cord Set 15Ft. (CE, CC, CT) Cord Set (CE - See manual 119061)
56A	1	103582 ♦	Compression Flange
57	1	113271	Terminal Block, Power
60	1	113272	Terminal Block, Level Control
62	1	121676-M 119068	ESPS-150 Level Control (AUE) CE Only

Contact your local Distributor or the Factory for other impeller sizes, seal materials, cord lengths and other optional equipment.

(*) AUE - ESPS Level Control

(**) Items 31A thru 31E are included with item 31 motor.

(♦) Supplied with Item 56.

(†) L Series Only. NOT USED ON CC, CE, CT.

Continued →

Series OGVF & OGVH

Submersible Grinder
2HP, 60Hz, 3450RPM

BARNES®

www.cranepumps.com

BARNES • PROSSER • CROWN SERVICE PARTS

DISCHARGE ASSEMBLIES for CC, CE & CT Grinder Pumps

ITEM	QTY.	PART No.	DESCRIPTION
1	1	625-01556	O-ring, -228
2	1	118251	Valve Seat Flapper, Brz
3	1	118252	Gasket
4	2	112725	Pin .125 x .75 SS
5	3	1-156-1	HXHD Screw 5/16-18 x 1.00" SS
6	3 or 6	026322	Lock Washer 5/16 SS
7A	1	TBD	Valve Body (CC)
7B	1	118250	Valve Body (CE)
7D	1	TBD	Valve Body (CT)
8	1	118253	Pump Support Plate
9	1	119854	Diaphragm
10	1	118248	Diaphragm Retaining Plate
11	8	118267	FHHS Screw #10-32 x .75" SS
12	3	2-23030-50	SkHd Screw 5/16-18 x 1.25" Lg

The Discharge Assembly will be factory assembled to pump.

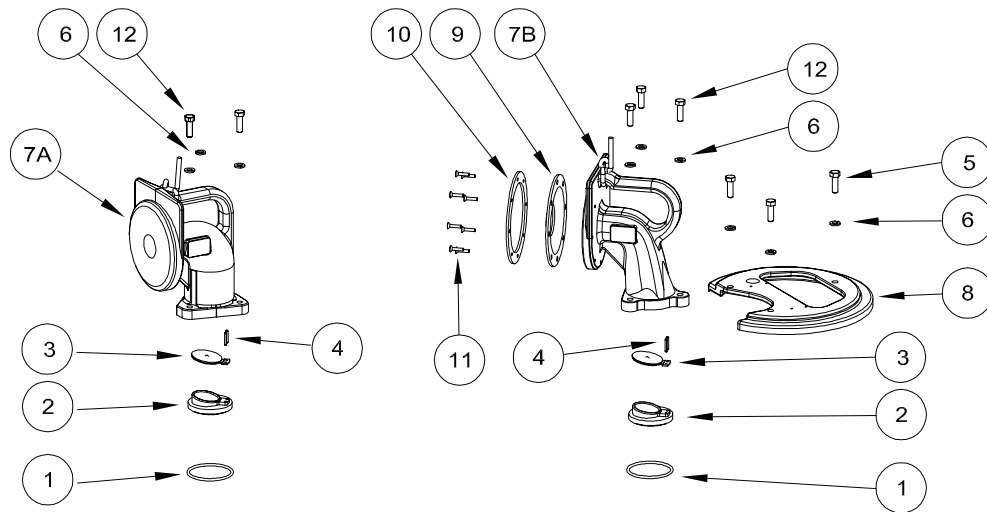
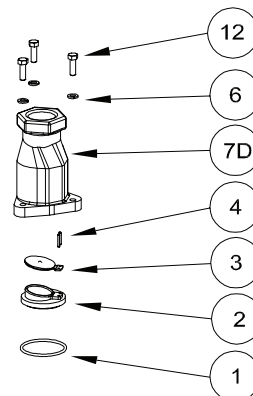


FIGURE 10

OGV-CC

OGV-CE

OGV-CT



END

SECTION 3B
PAGE 34
DATE 2/07

CRANE

A Crane Co. Company

PUMPS & SYSTEMS Order Online: www.PumpCatalog.com

USA: (937) 778-8947 • Canada: (905) 457-6223 • International: (937) 615-3598