



TYPE "B" SINGLE STAGE
CENTRIFUGAL PUMP
Air Cooled Engine Drive

Section	AC
Page	140.1
Date	January 1, 2004
Supersedes 2/1/96	

CAST IRON IMPELLER

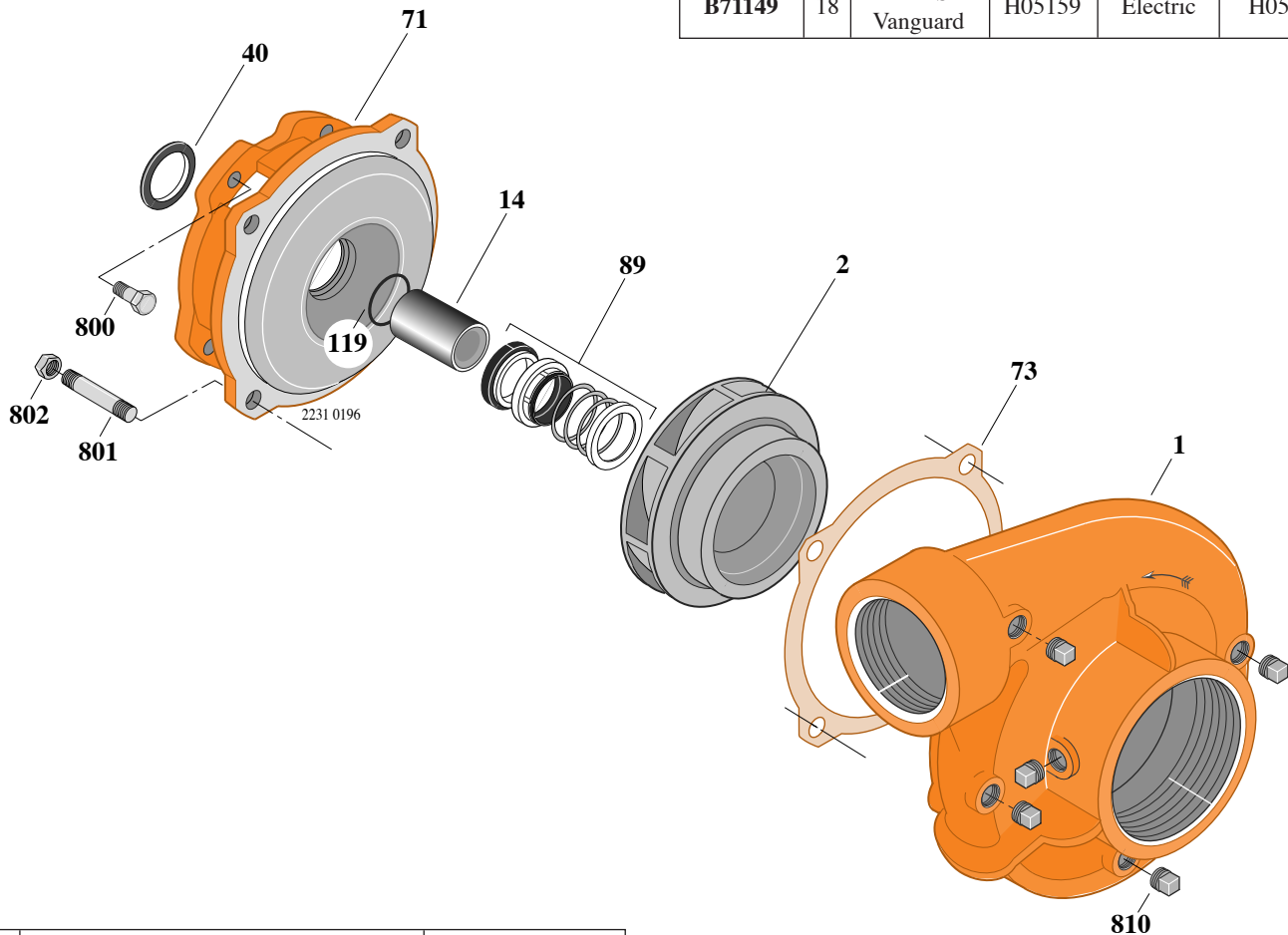
B3TQMS-18

Threaded Case (NPT)

Mechanical Seal Construction

TABLE I

B/M No.	HP	Engine Manufacturer	Engine Part No.	Engine Starter	Base Part No.
B71149	18	B & S Vanguard	H05159	Electric	H05248



Item No.	Part Description	Part Number
1	Case, Volute	L01104
2	Impeller	M10450
14	Sleeve, Shaft	M10731
40	Slinger, Water	S03893
71	Bracket	L01600
73	Gasket	S04757
89	Seal, Mechanical Shaft	S32014
119	O-Ring	M10728
800	Capscrew, Hex 3/8-16x1" (4 Req.)	S26826
801	Stud, 1/2-13x1-1/2" (4 Req.)	S24043
802	Nut, Hex 1/2-13 (4 Req.)	S23107
810	Plug, Pipe 1/4 NPT (5 Req.)	S23715

NOTE: Refer to *Supplement A* for base configuration and mounting hardware.