



# MARCH PUMPS

1819 PICKWICK AVE., GLENVIEW, IL 60026-1306, U.S.A

## DESCRIPTION:

Series 320 pumps are centrifugal magnetic drive pumps, eliminating the need for a shaft seal. Pumps are serviceable with a screwdriver. See the parts list for a breakdown of parts.

**Model Abbreviations:** A: Smooth Inlet/Outlet, C: Threaded Inlet/Outlet

## OPERATION:

Pumps are not self-priming, lack a suction lift, and thus require a **flooded suction**. Pumps **cannot be run dry** because the impeller requires the liquid being pumped for lubrication. The direction of motor rotation should be clockwise when facing the inlet of the pump. For liquids with a specific gravity greater than water, have a higher viscosity, or for elevated temperatures, a trimmed impeller may be necessary. For application assistance, contact March Pump.

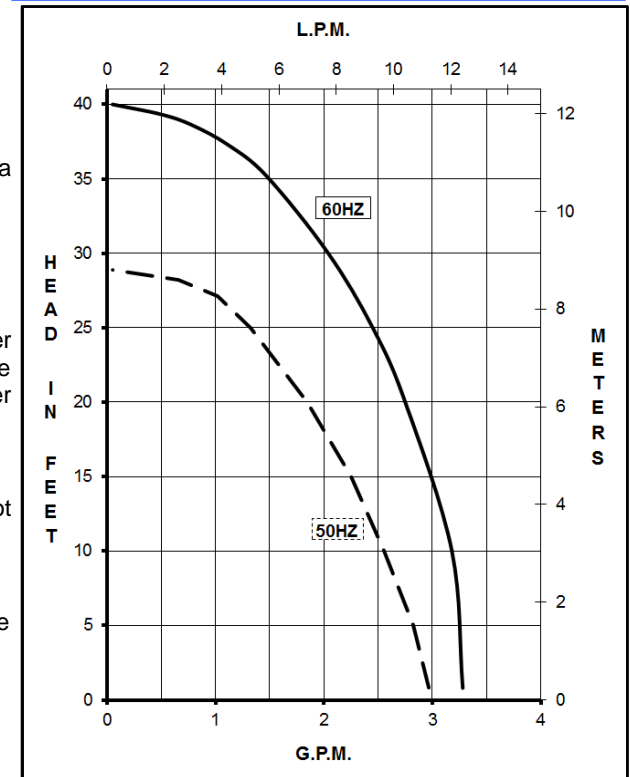
## ELECTRICAL:

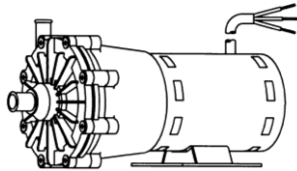
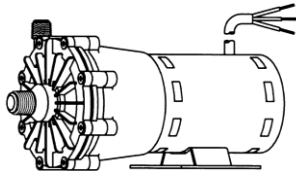
Motors are available in different electrical configurations such as 115 V 50/60 Hz, or 230 V 50/60 Hz, 1 Phase and have a 3 foot (0.9 m) cord. Motors are U.L. listed and are rated for continuous operation.

## LIMITED WARRANTY:

March pumps are guaranteed only against defects in workmanship or materials for a period of one year from date of manufacture pumping water.

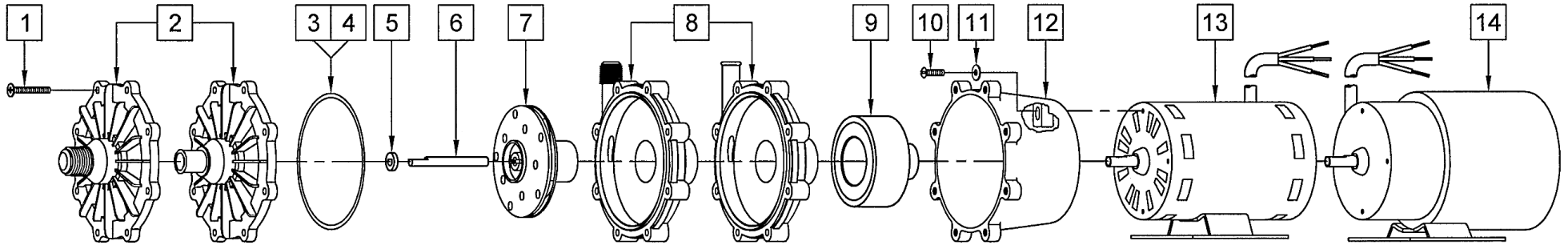
## 320-AP-MD, 320-CP-MD



SPECIFICATIONS		320-AP-MD													320-CP-MD															
																														
Product #	115 V	0320-0001-0100													0320-0001-0300															
	230 V	0320-0001-0600													0320-0001-0800															
Inlet - Outlet		5/8" OD - 1/2" OD													1/2" MPT - 3/8" MPT															
Max Internal Pressure		50 psi (344 kPa)													50 psi (344 kPa)															
Max Liquid Temperature		190 °F (87 °C)													190 °F (87 °C)															
MODEL	60 Hz											50 Hz											Height		Width		Length		Packed Weight	
	Max Flow gpm lpm	Max Head ft psi m			ELECTRICAL					Max Flow gpm lpm	Max Head ft psi m			ELECTRICAL					Inches	cm	Inches	cm	Inches	cm	lbs	kg				
320-AP-MD	3.3 12.5	40	17.3	12.2	1	115	1.75	1/12	0.062	3450	2.99	11.3	28.9	12.5	8.8	1	115	1.75	1/12	0.062	2850	5.01	12.7	5.33	13.5	9.99	25.3	7.90	3.58	
						230	0.75										230	0.75												5.08
320-CP-MD	3.3 12.5	40	17.3	12.2	1	115	1.75	1/12	0.062	3450	2.99	11.3	28.9	12.5	8.8	1	115	1.75	1/12	0.062	2850	5.01	12.7	5.37	13.6	9.99	25.3	7.95	3.60	
						230	0.75										230	0.75												5.08

All specifications & data are based on pumping water & are intended as a guideline only. Specifications may vary with different motors.

**PARTS LIST**



**NOTE:** When attaching drive magnet to the motor shaft, position the face of the drive magnet 3/32 inch below the face of the motor bracket.

**320-AP-MD**

#	DESCRIPTION	MATERIAL	SIZE (Inches)	QTY.	PART #
1	Screw	Stainless	#8-32 x 1-1/4" Lg.	8	0320-0008-1000
2	Cover	Polypropylene	5/8" OD Inlet	1	0320-0003-1000
3	"O" Ring	Viton	0.118" CS x 3.622" ID	1	0320-0006-1000
4	"O" Ring (Option)	EPDM		1	0320-0012-1000
5	Thrust Washer	Ceramic		1	0130-0028-1000
6	Shaft	Ceramic		1	0130-0024-1000
7	Impeller	Polypropylene		1	0320-0004-0300
8	Rear Housing w/Thrust Washer	Polypropylene/Ceramic	1/2" OD Smooth	1	0320-0002-0100
9	Drive Magnet			1	0130-0043-0200
10	Screw	Stainless	#8-32 x 5/8" Lg.	4	0618-0027-1000
11	Washer	Stainless	#8	4	0135-0016-1000
12	Motor Bracket	Plastic		1	0320-0007-0100
13	Motor 115 V, 50/60 Hz			1	0145-0012-1000
14	Motor 230 V, 50/60 Hz			1	0145-0036-1000

**320-CP-MD**

#	DESCRIPTION	MATERIAL	SIZE (Inches)	QTY.	PART #
1	Screw	Stainless	#8-32 x 1-1/4" Lg.	8	0320-0008-1000
2	Cover	Polypropylene	1/2" MPT Inlet	1	0320-0011-1000
3	"O" Ring	Viton	0.118" CS x 3.622" ID	1	0320-0006-1000
4	"O" Ring (Option)	EPDM		1	0320-0012-1000
5	Thrust Washer	Ceramic		1	0130-0028-1000
6	Shaft	Ceramic		1	0130-0024-1000
7	Impeller	Polypropylene		1	0320-0004-0300
8	Rear Housing w/Thrust Washer	Polypropylene/Ceramic	3/8" MPT Outlet	1	0320-0010-0100
9	Drive Magnet			1	0130-0043-0200
10	Screw	Stainless	#8-32 x 5/8" Lg.	4	0618-0027-1000
11	Washer	Stainless	#8	4	0135-0016-1000
12	Motor Bracket	Plastic		1	0320-0007-0100
13	Motor 115 V, 50/60 Hz			1	0145-0012-1000
14	Motor 230 V, 50/60 Hz			1	0145-0036-1000

**Materials in Contact with Solution:**

Polypropylene, Ceramic, Viton

NOTE: Contact Factory for other materials and/or parts not listed

0320-0013-1000 R13