

BALDOR® • ***RELIANCE***

Product Information Packet

CWDL3510

1HP,1725RPM,1PH,60HZ,56C,3524L,TEFC,F1,N

| Part Detail | | | | | | | |
|-------------|------|----------------|-------|-------------|----------|---------------|------------|
| Revision: | Z | Status: | PRD/A | Change #: | | Proprietary: | No |
| Type: | AC | Prod. Type: | 3524L | Elec. Spec: | 35WGX945 | CD Diagram: | CD0001 |
| Enclosure: | TEFC | Mfg Plant: | | Mech. Spec: | 35S576 | Layout: | 35LYS576 |
| Frame: | 56C | Mounting: | F1 | Poles: | 04 | Created Date: | |
| Base: | RG | Rotation: | R | Insulation: | F | Eff. Date: | 02-22-2016 |
| Leads: | 6#18 | | | | | Replaced By: | |
| Literature: | | Elec. Diagram: | | | | | |

| Nameplate NP1496L | | | | | | | | | | |
|-------------------|--------------|--|------|----|-----|------|--|----------------|----|---|
| CAT.NO. | CWDL3510 | | | | | | | | | |
| SPEC. | 35S576X945G1 | | | | | | | | | |
| HP | 1 | | | | | | | | | |
| VOLTS | 115/230 | | | | | | | | | |
| AMP | 12.8/6.4 | | | | | | | | | |
| RPM | 1725 | | | | | | | | | |
| FRAME | 56C | | | | HZ | 60 | | | PH | 1 |
| SER.F. | 1.15 | | CODE | K | DES | L | | CLASS | F | |
| NEMA-NOM-EFF | 67 | | PF | 73 | | | | | | |
| RATING | 40C AMB-CONT | | | | | | | | | |
| CC | | | | | | | | USABLE AT 208V | 7 | |
| DE | 6205 | | | | ODE | 6203 | | | | |
| ENCL | TEFC | | SN | | | | | | | |

| Parts List | | |
|---------------|---|----------|
| Part Number | Description | Quantity |
| SA084614 | SA 35S576X945G1 | 1.000 EA |
| RA077778 | RA 35S576X945G1 | 1.000 EA |
| EC1645A06SP | ELEC CAP, 645-774 MFD, 125V, 2.06D X 4. | 1.000 EA |
| NS2512A01 | INSULATOR, CONDUIT BOX X | 1.000 EA |
| 35CB3008A01W | 35 CB .50 NPT @ 6, MACH WHITE EPOXY | 1.000 EA |
| 35GS1039 | 05 MOLDED GASKET W/LIP, 1.12 LEAD HOLE, | 1.000 EA |
| 51XB1016A08 | 10-16X 1/2HXWSSLD SERTYB | 2.000 EA |
| 11XW1032G06 | 10-32 X .38, TAPTITE II, HEX WSHR SLTD U | 1.000 EA |
| 35EP3100M04MW | FREP TEFC,"O" DRILLS,NO GRSSR, MACH.WHITE | 1.000 EA |
| HW4032A01 | BLACK DRAIN PLUG FOR WASH DOWN MOTORS | 3.000 EA |
| 51XW0832A07 | 8-32 X .44, TAPTITE II, HEX WSHR SLTD SE | 2.000 EA |
| NS2501A01 | INSULATOR, CAPACITOR | 1.000 EA |
| 51XB1016A06 | 10-16X3/8 HXWSSLD SERTYB | 4.000 EA |
| HW5100A03SP | WAVY WASHER (W1543-017) | 1.000 EA |
| 35EP3300A48MW | SPL FACE MTD EP - 205 BRG - W/SEAL FOR W | 1.000 EA |
| HW4032A01 | BLACK DRAIN PLUG FOR WASH DOWN MOTORS | 3.000 EA |
| HW4600B49 | SEAL 0.938 X 1.624 X 0.250 SINGLE LIP DB | 1.000 EA |
| 12XN1032S20 | 10-32 X 1-1/4 HEX M.S. , STAINLESS STEEL | 2.000 EA |
| 51XB1214A16 | 12-14X1.00 HXWSSLD SERTYB | 1.000 EA |
| 35FH4005A32SP | IEC FH NO GRSSR W/3 HOLES - PRIMED | 1.000 EA |
| 11XW1032S06 | 10-32 X .38, TAPTITE II, HEX WSHR SLTD U | 3.000 EA |
| 35CB4522 | 35 LIPPED CB LID PRIMED | 1.000 EA |
| 35GS1030A02 | 35 GS FOR CB LID - WHITE NEOPRENE | 1.000 EA |
| 59XW0832S07 | TAPTITE II,HEX WSHR UNSLTD SER,410 S.S., | 4.000 EA |

| Parts List (continued) | | |
|------------------------|--|----------|
| Part Number | Description | Quantity |
| HW1003S08 | WASHER, #8 EX TH LK, SS | 4.000 EA |
| HW4600B39SP | V-RING SLINGER 0.550 X 0.790 X .18 VITON | 1.000 EA |
| HW4600B46 | V-RING SLINGER 0.875 X 1.420 X .24 VITON | 1.000 EA |
| HW2502D13 | SS KEY, 3/16 SQ X 1.375 | 1.000 EA |
| HA7000A04 | KEY RETAINER 0.625 DIA SHAFTS | 1.000 EA |
| LB1164 | LABEL,WARNING AND DRAIN | 1.000 EA |
| HA5027A01 | HA4066A01 T-DRAIN X2 BAGGED | 1.000 EA |
| WD1000A15 | 3-520132-2 AMP FLAG (4M/RL NON-CANC/NON- | 2.000 EA |
| MJ1000A02 | GREASE, POLYREX EM EXXON (USe 4824-15A) | 0.050 LB |
| 35FN3002A05 | EXFN, PLASTIC, 6.376 OD, .638 ID | 1.000 EA |
| MG1025Z02 | ACTIVATOR WILKOFAS 060.02HF | 0.010 GA |
| MG1025W01 | WILKOFAS 781.01, SIGNAL WHITE #9003 | 0.017 GA |
| MJ5001A27 | 32220KN GRAY SEALER *MIN BUY 4 QTS=1GAL | 0.001 QT |
| 85XU0407S04 | 4X1/4 U DRIVE PIN STAINLESS | 2.000 EA |
| HA3100S11 | THRUBOLT - 10-32 X 8.500 W | 4.000 EA |
| SP5051A24 | MODEL 35 TORQ STATIONARY SWITCH FOR "L" | 1.000 EA |
| 35CB4802A02SP | CAPACITOR COVER, STAMPED X | 1.000 EA |
| 35GS1016A02 | GASKET-1/16 THK WHITE RUBBER USED W/HOSE | 1.000 EA |
| LC0001 | CONN LABEL TYPE L, 6 LEAD, DUAL VOLTS, R | 1.000 EA |
| NP1496L | SS WD UL CSA CC | 1.000 EA |
| 35PA1066 | PKG GRP, PRINT PK1008A06 | 1.000 EA |
| MN416A01 | TAG-INSTAL-MAINT no wire (1200/bx) 11/14 | 1.000 EA |

AC Induction Motor Performance Data

Record # 20604 - Typical performance - not guaranteed values

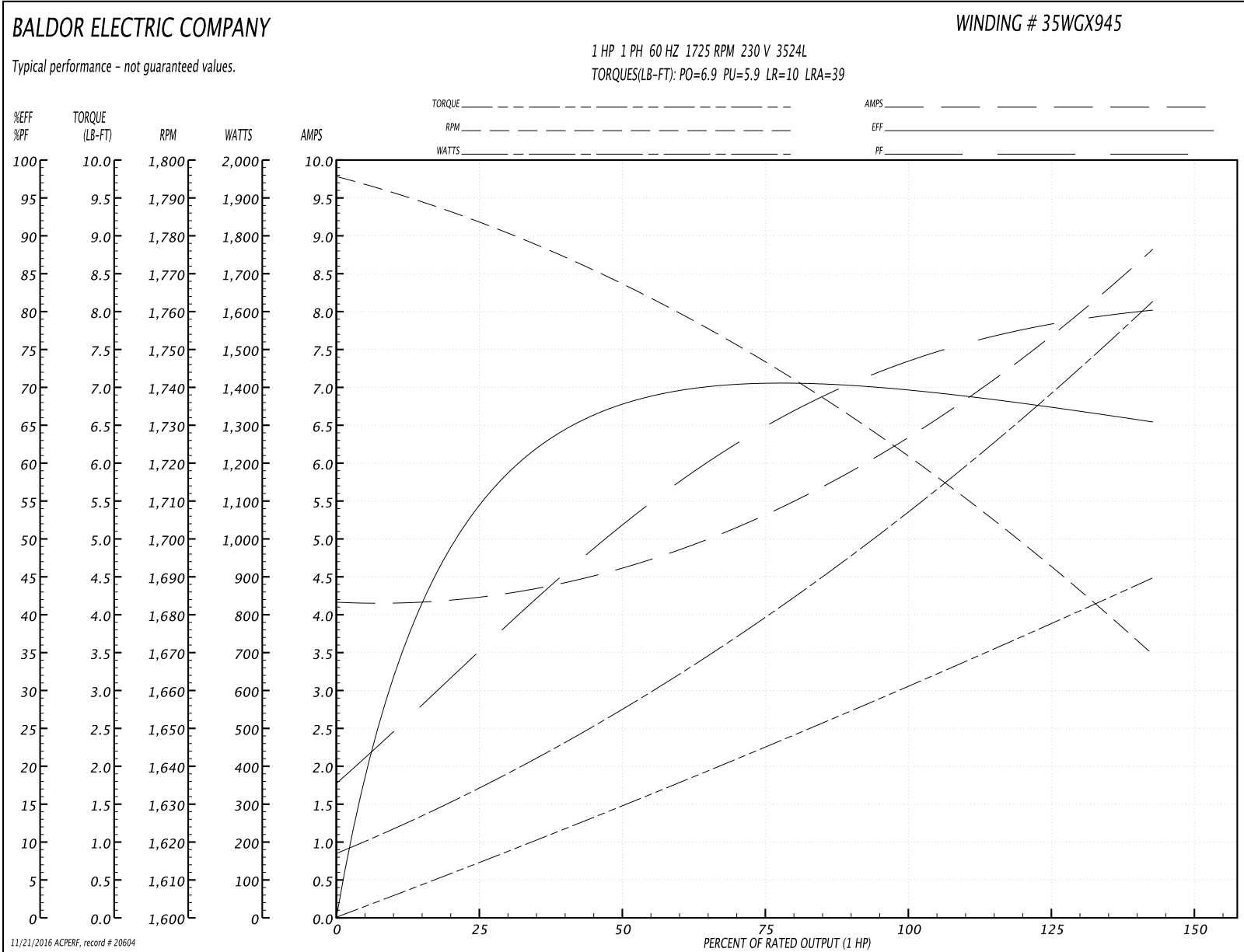
| | | |
|-------------------------------|--------------------|------------------------|
| Winding: 35WGX945-R004 | Type: 3524L | Enclosure: TEFC |
|-------------------------------|--------------------|------------------------|

| Nameplate Data | | | | 230 V, 60 Hz: High Voltage Connection | |
|-----------------------|--------------|--------------|----|--|--------------------------|
| Rated Output (HP) | 1 | | | Full Load Torque | 3 LB-FT |
| Volts | 115/230 | | | Start Configuration | direct on line |
| Full Load Amps | 12.8/6.4 | | | Breakdown Torque | 6.9 LB-FT |
| R.P.M. | 1725 | | | Pull-up Torque | 5.9 LB-FT |
| Hz | 60 | Phase | 1 | Locked-rotor Torque | 10 LB-FT |
| NEMA Design Code | L | KVA Code | K | Starting Current | 39 A |
| Service Factor (S.F.) | 1.15 | | | No-load Current | 4.1 A |
| NEMA Nom. Eff. | 67 | Power Factor | 73 | Line-line Res. @ 25°C | 2.6 Ω A Ph 1.8 Ω B Ph |
| Rating - Duty | 40C AMB-CONT | | | Temp. Rise @ Rated Load | 79°C |
| S.F. Amps | | | | Temp. Rise @ S.F. Load | 96°C |

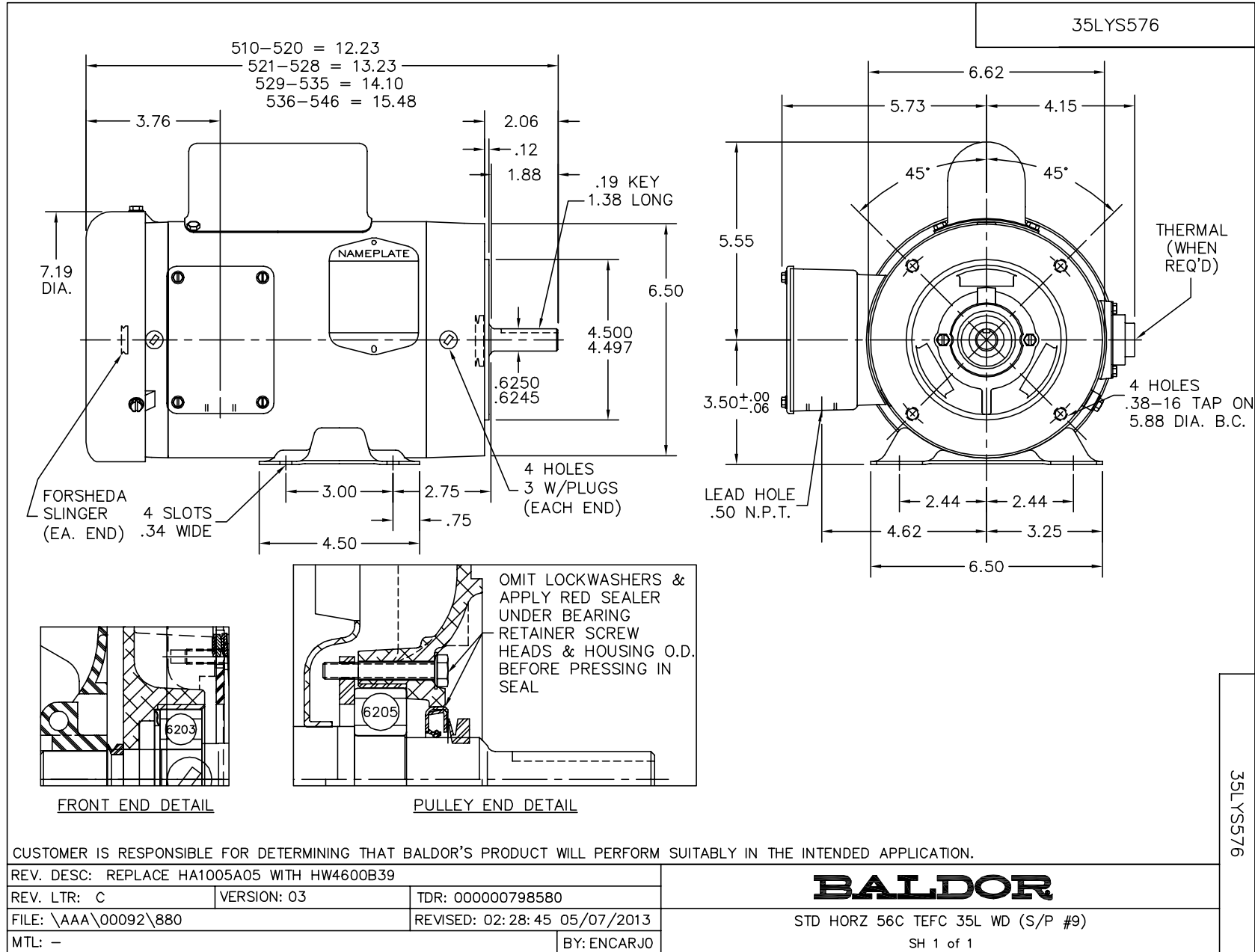
Load Characteristics 230 V, 60 Hz, 1 HP

| % of Rated Load | 25 | 50 | 75 | 100 | 125 | 150 | S.F. |
|-----------------|------|------|------|------|------|------|------|
| Power Factor | 39 | 53 | 67 | 75 | 81 | 84 | 79 |
| Efficiency | 52.9 | 67.6 | 70 | 70.3 | 68.6 | 64.9 | 69.3 |
| Speed | 1781 | 1765 | 1746 | 1726 | 1701 | 1666 | 1711 |
| Line amperes | 4.3 | 4.7 | 5.3 | 6.2 | 7.4 | 8.9 | 6.9 |

Performance Graph at 230V, 60Hz, 1.0HP Typical performance - Not guaranteed values



11/21/2016 ACPERF, record # 20604



CD0001



| | LINE A | LINE B | JOIN |
|----------|--------|--------|-------|
| HIGH STD | 1 | 4,5 | 2,3,8 |
| HIGH OPP | 1 | 4,8 | 2,3,5 |
| LOW STD | 1,3,8 | 2,4,5 | - |
| LOW OPP | 1,3,5 | 2,4,8 | - |

NOTES:

1. STANDARD ROTATION IS CCW FACING END OPPOSITE SHAFT EXTENSION.
2. OPTIONAL THERMOSTAT IS PROVIDED WHEN SPECIFIED.
3. MULTIPLE CAPACITORS ARE CONNECTED IN PARALLEL UNLESS OTHERWISE SPECIFIED.
4. LEAD COLORS ARE OPTIONAL. LEADS MUST ALWAYS BE NUMBERED AS SHOWN.

| | | | |
|---|---------|------------------------|--------------|
| REV. DESC: REVISE TO SHOW OPTIONAL COLORS | | | |
| REV. LTR: D | BY: JLP | REVISED: 04/08/99 1:16 | TDR: 0178636 |
| 100000 | | FILE: AAA00007405 | MDL: - |
| | | MTL: - | |

BALDOR ELECTRIC Co.

TYPE L, DV, REV, 6 LEADS

CD0001