

BALDOR® • ***RELIANCE***

Product Information Packet

ECP84408TR-4

250HP, 1785RPM, 3PH, 60HZ, 449T, A44140M, TEFC

| Part Detail | | | | | | | |
|-------------|----------------------|----------------|---------|-------------|-----------|---------------|------------|
| Revision: | K | Status: | PRD/A | Change #: | | Proprietary: | No |
| Type: | AC | Prod. Type: | A44140M | Elec. Spec: | A44WG1502 | CD Diagram: | 416820-036 |
| Enclosure: | TEFC | Mfg Plant: | | Mech. Spec: | | Layout: | 617427-063 |
| Frame: | 449T | Mounting: | F1 | Poles: | 04 | Created Date: | 08-21-2012 |
| Base: | | Rotation: | PS | Insulation: | F | Eff. Date: | 05-23-2016 |
| Leads: | 3#1/0 (02 per group) | | | | | Replaced By: | |
| Literature: | | Elec. Diagram: | | | | | |

| Nameplate NP3237 | | | | | | | | | | |
|--------------------|--------------|-----------------|------------|---------------|--------------|--------|-----------------------|---------------------|------|---|
| CAT NO | ECP84408TR-4 | | SPEC NO. | P44G3986 | | DESIGN | B | | | |
| HP | 250 | AMPS | 276 | VOLTS | 460 | SF | 1.15 | DUTY | CONT | |
| FRAME SIZE | 449T | RPM | 1785 | HZ | 60 | AMB | 40 | PH | 3 | |
| D.E. BRG.DATA | NU222 | O.D.E. BRG.DATA | 6318 | | TYPE | P | ENCL | TEFC | CODE | G |
| D.E. BRG. | 110RU02M30X | O.D.E. BRG. | 90BC03J30X | | POWER FACTOR | 88 | | NEMA-NOM-EFFICIENCY | 96.2 | |
| 3/4 LOAD EFF. | 96.6 | IP | 56 | MAX CORR KVAR | 43.0 | | GUARANTEED EFFICIENCY | 95.4 | | |
| TEMP CODE | T3 | TEMP = | 200 | VT HZ | 0-60 | | | | | |
| CHP HZ | 60-90 | CT HZ | 30-60 | | | | | | | |
| INVERTER-TEMP-CODE | T3 | | | | | | | | | |
| SER.NO. | | MOTOR WEIGHT | 2677 | | | | | | | |

Nameplate 000613007EX

| | | | |
|-----------------|--------------|--------------------------|---------------|
| CAT NO | ECP84408TR-4 | SPEC NO. | P44G3986 |
| NO. ROTOR BARS | 58 | GREASE TYPE | MOBIL SHC 220 |
| NO. SLOTS | 72 | NL AMPS AT RATED VOLTAGE | 72.4 |
| 5 YEAR WARRANTY | | WINDING RES @25 C | .0154 |
| MFG. DATE | | SER.NO | |
| | | | OHMS |
| | | | |
| | | | |

| | |
|-----------------------|--|
| Nameplate NP2496L | |
| MOBIL SHC -220 GREASE | |
| | |

| Parts List | | |
|-------------|--|----------|
| Part Number | Description | Quantity |
| SA249753 | SA P44G3986 | 1.000 EA |
| RA236613 | RA P44G3986 | 1.000 EA |
| 000613006PU | N/P (RELEASE QTY 10,000) UL CSA LABEL | 1.000 EA |
| NP3237 | SS SUPER E INVERTER DUTY IEEE 841 | 1.000 EA |
| 000613007EX | SS IEEE 841 EMBOSSED AUXILIARY NAMEPLATE | 1.000 EA |
| 000692000FF | N/P | 1.000 EA |
| 000692000JP | N/P | 1.000 EA |
| 000692000RT | N/P | 1.000 EA |
| 000692000VD | LABEL WARNING | 1.000 EA |
| NP2496L | MOTOR LUBE NAMEPLATE | 1.000 EA |
| 004824015AP | GREASE MOBILITH SHC 220 | 1.156 LB |
| 032018008CK | HHCS 3/8-16X1L PLATED | 4.000 EA |
| 032018020FK | HHCS 3/4-10X2-1/2 PLTD. | 4.000 EA |
| 032018036DK | HHCS 1/2-13X4-1/2 PLTD. | 3.000 EA |
| 032620016LA | SOCKET SET SCREW-449 | 3.000 EA |
| 034017014AB | LCKW 3/8 STD. PLATED | 4.000 EA |
| 034180014DA | KEY 1/4X1/4X1-3/4 L | 1.000 EA |
| 034530072AB | P/NIP 1/8X9"L Threaded both ends | 1.000 EA |
| 034530072BB | PIPE NIPPLE,DE - 440-BS | 1.000 EA |
| 034600001AA | BUSH 1/4TO1/8 BLACK | 1.000 EA |
| 034630002AB | CPLG 1/4" PLATED | 1.000 EA |
| 034690005AB | PPLG 3/4 PLATED | 2.000 EA |
| 035000001G | GREASE RELIEF FITTING, ALEMITE 317400 | 1.000 EA |
| 089490101C | G28 BRKT 089490100WCA | 1.000 EA |

| Parts List (continued) | | |
|------------------------|---------------------------------------|----------|
| Part Number | Description | Quantity |
| 412118006A | DRAIN | 1.000 EA |
| 078548001R | FAN KB 234/150 (84) 400 | 1.000 EA |
| 083199082RA | G28 SHORT FAN COVER W/BAFFLE ASSEMBLY | 1.000 EA |
| 089490099D | G28 BRKT 089490098WCA | 1.000 EA |
| 412118006A | DRAIN | 1.000 EA |
| 415028021L | SEAL - 449 | 1.000 EA |
| 415072001B | CLAMP | 1.000 EA |
| 415096002A | CPLG 1/8 HEX TYPE | 1.000 EA |
| 418151014G | RETAIN RING | 1.000 EA |
| 423709011D | WASHER | 3.000 EA |
| 032018004BK | HHCS 5/16-18X1/2 PLATED | 3.000 EA |
| 032018006BK | HHCS 5/16-18X3/4 PLATED | 3.000 EA |
| 032018020FK | HHCS 3/4-10X2-1/2 PLTD. | 4.000 EA |
| 032018030DK | HHCS 1/2-13X3-3/4 PLTD. | 3.000 EA |
| 415915007G | GASK, LAC | 1.000 FT |
| 034017013AB | LCKW 5/16 STD. PLATED | 3.000 EA |
| 034530072AB | P/NIP 1/8X9"L Threaded both ends | 1.000 EA |
| 034530072BB | PIPE NIPPLE,DE - 440-BS | 1.000 EA |
| 034600001AA | BUSH 1/4TO1/8 BLACK | 1.000 EA |
| 034630002AB | CPLG 1/4" PLATED | 1.000 EA |
| 035000001G | GREASE RELIEF FITTING, ALEMITE 317400 | 1.000 EA |
| 415028021K | INPRO SEAL,DE - 449 | 1.000 EA |
| 415096002A | CPLG 1/8 HEX TYPE | 1.000 EA |
| 418151014H | RETAIN RING | 1.000 EA |

Product Information Packet: ECP84408TR-4 - 250HP,1785RPM,3PH,60HZ,449T,A44140M,TEFC

| | | |
|--------------|---|----------|
| 423709011D | WASHER | 3.000 EA |
| 702623022A | G28 AIR DEFLECTOR DRIVE END -- PLASTIC | 1.000 EA |
| 702623013A | THERMAL BARRIER -- G28 -- BRACKET MTD | 1.000 EA |
| 032018008BK | HHCS 5/16-18X1L PLATED | 4.000 EA |
| 032018008DK | HHCS 1/2-13X1 PLATED | 4.000 EA |
| 033512004LB | HHTTS 1/4-20X1/2 PLTD. | 1.000 EA |
| 035000001A | ALFTG 1/8" 1610-BL | 1.000 EA |
| 035000001A | ALFTG 1/8" 1610-BL | 1.000 EA |
| 067053014A | GASK 440 | 1.000 EA |
| 076870000B | +CBCST BLKT - 440 | 1.000 EA |
| 076871000A | +CBOX CVR BLKT - 449 | 1.000 EA |
| 406056007A | GASKET, 440 | 1.000 EA |
| 406099000A | PLUG - FAN COVER 320-440 | 1.000 EA |
| 415000103D | T/LUG #4AWG-1/0AWG W/HOLE FOR .250 BOLT | 1.000 EA |
| 418150003A | GREASE FITTING CAP | 1.000 EA |
| 418150003A | GREASE FITTING CAP | 1.000 EA |
| 033775004EA | DRSCR #6-1/4 304 S.S. | 2.000 EA |
| 034180054KA | KEY 7/8X7/8X6-3/4 L | 1.000 EA |
| PK5005A01 | WOOD BASE 449 60 X 41-1/2 BLT 25 X 18 | 1.000 EA |
| MG1025N19 | WILKO 778.50 BLUE GREEN - 55 GAL DRUMS | 0.375 GA |
| 004824003CBY | WILKO PAINT 060.02 - ACTIVATOR | 0.094 GA |
| MG1500G03-5 | LACQUER PRIMER, GRAY | 0.094 GA |
| 421948051 | LABEL, MYLAR | 1.000 EA |
| LB1449 | DIV-2/NEC WARNING LABEL | 1.000 EA |

| | | | | | | |
|-----------|-------------|-------------------|-----------|--|-------------|-------|
| REL. S.O. | FRAME | HP | TYPE | PHASE/HERTZ | RPM | VOLTS |
| | 449T | 250 | P | 3/60 | 1785 | 460 |
| AMPS | DUTY | AMB °C/ INSUL. | S.F. | NEMA DESIGN | CODE LETTER | ENCL. |
| 276 | CONT | 40/F | 1.15 | B | G | TEFC |
| E/S | ROTOR | TEST S.O. | TEST DATE | STATOR RES. @25 °C (OHMS BETWEEN LINES) | | |
| 833162 | 418143050YE | --- | --- | .0154 | | |

PERFORMANCE

| LOAD | HP | AMPERES | RPM | POWER FACTOR % | EFFICIENCY % |
|---------|------|---------|------|----------------|--------------|
| NO LOAD | 0 | 72.4 | 1800 | 3.23 | 0 |
| 1/4 | 62.6 | 106 | 1796 | 58.0 | 95.4 |
| 2/4 | 125 | 154 | 1792 | 78.4 | 96.7 |
| 3/4 | 187 | 213 | 1788 | 85.2 | 96.6 |
| 4/4 | 250 | 278 | 1784 | 87.6 | 96.2 |
| 5/4 | 313 | 346 | 1779 | 88.3 | 95.7 |

SPEED TORQUE

| | RPM | TORQUE % FULL LOAD | TORQUE LB.-FT. | AMPERES |
|--------------|------|--------------------|----------------|---------|
| LOCKED ROTOR | 0 | 146 | 1077 | 1765 |
| PULL UP | 550 | 127 | 932 | 1676 |
| BREAKDOWN | 1727 | 281 | 2071 | 971 |
| FULL LOAD | 1784 | 100 | 736 | 278 |

AMPERES SHOWN FOR 460. VOLT CONNECTION. IF OTHER VOLTAGE CONNECTIONS ARE AVAILABLE, THE AMPERES WILL VARY INVERSELY WITH THE RATED VOLTAGE

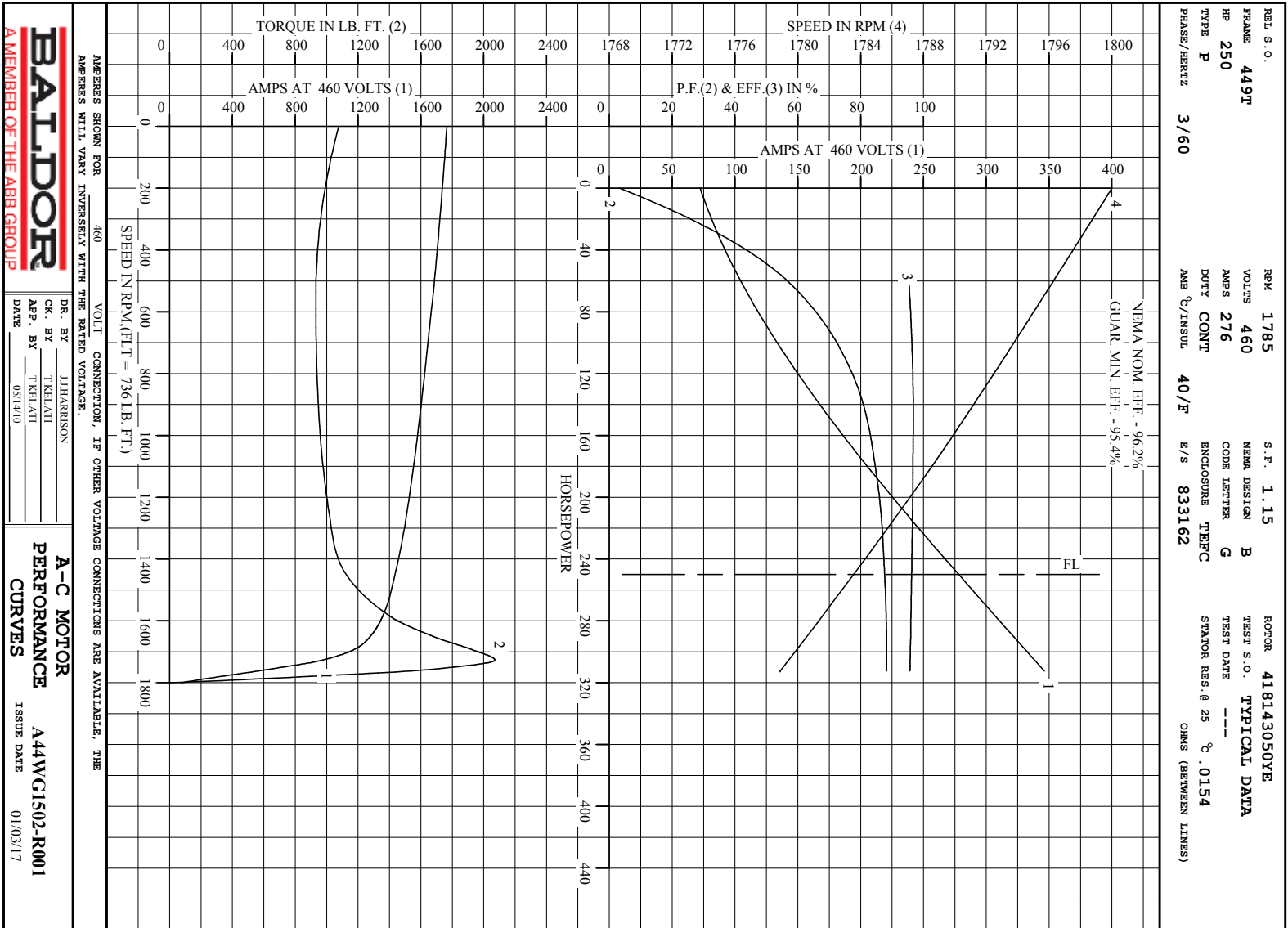
REMARKS: TYPICAL DATA
NEMA NOM. EFF. - 96.2%
GUAR. MIN. EFF. - 95.4%



DR. BY J. J. HARRISON
CR. BY T. KELAVI
APP. BY T. KELAVI
DATE 05/14/10

A-C MOTOR
PERFORMANCE DATA
A44WG1502-R001
ISSUE DATE 01/03/17

A MEMBER OF THE ABB GROUP

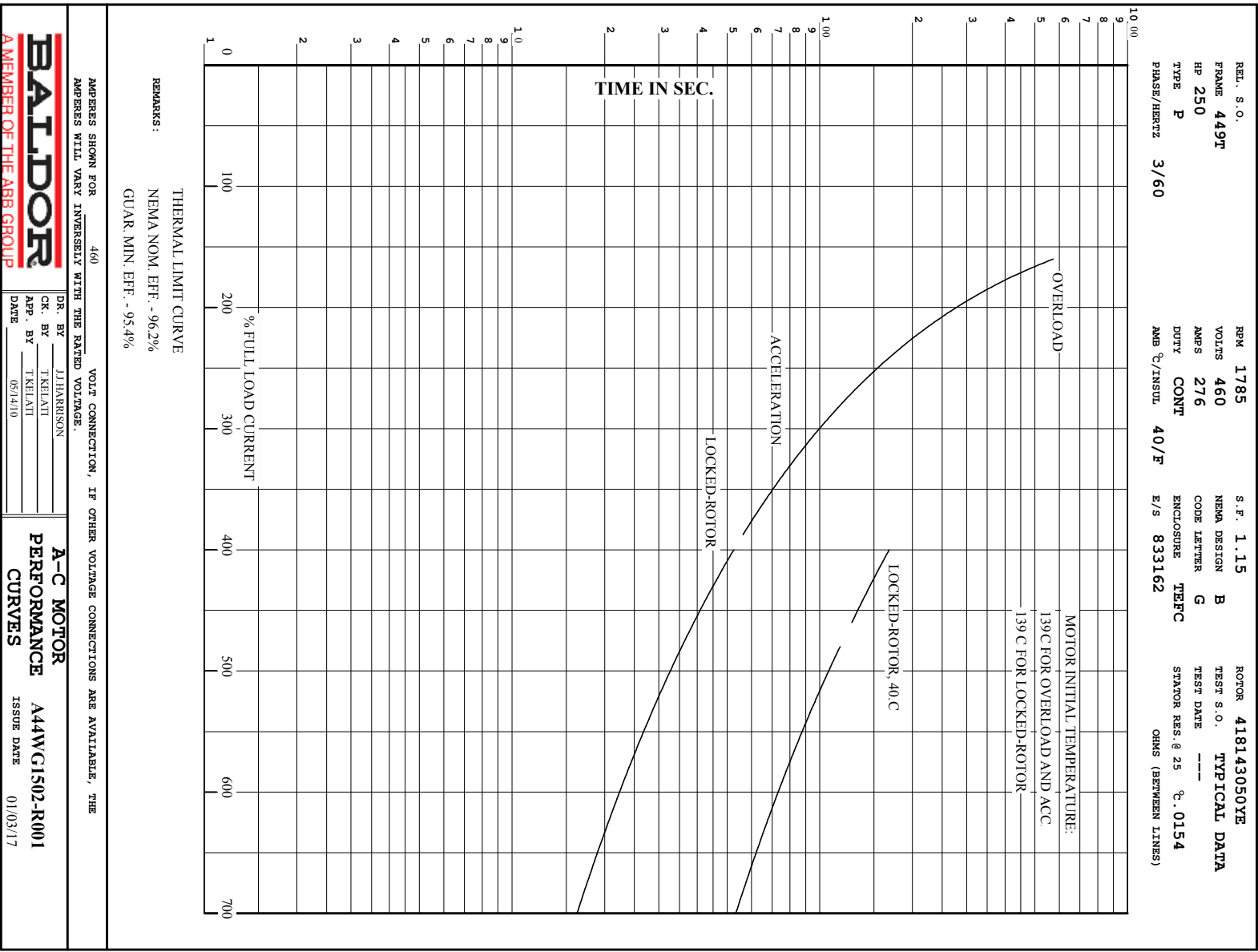


BALDOR
A MEMBER OF THE ABB GROUP

DR. BY: JHARRISON
CK. BY: TKEHATI
APP. BY: TKEHATI
DATE: 05/14/10

A-C MOTOR
PERFORMANCE CURVES
A44WC1502-R001
ISSUE DATE: 01/03/17

Printed on 1/3/17 13:55 @ bengap01.baldor.com



DUTY MASTER ALTERNATING CURRENT MOTORS
SQUIRREL-CAGE INDUCTION

ENCLOSURE: TOTALLY ENCLOSED

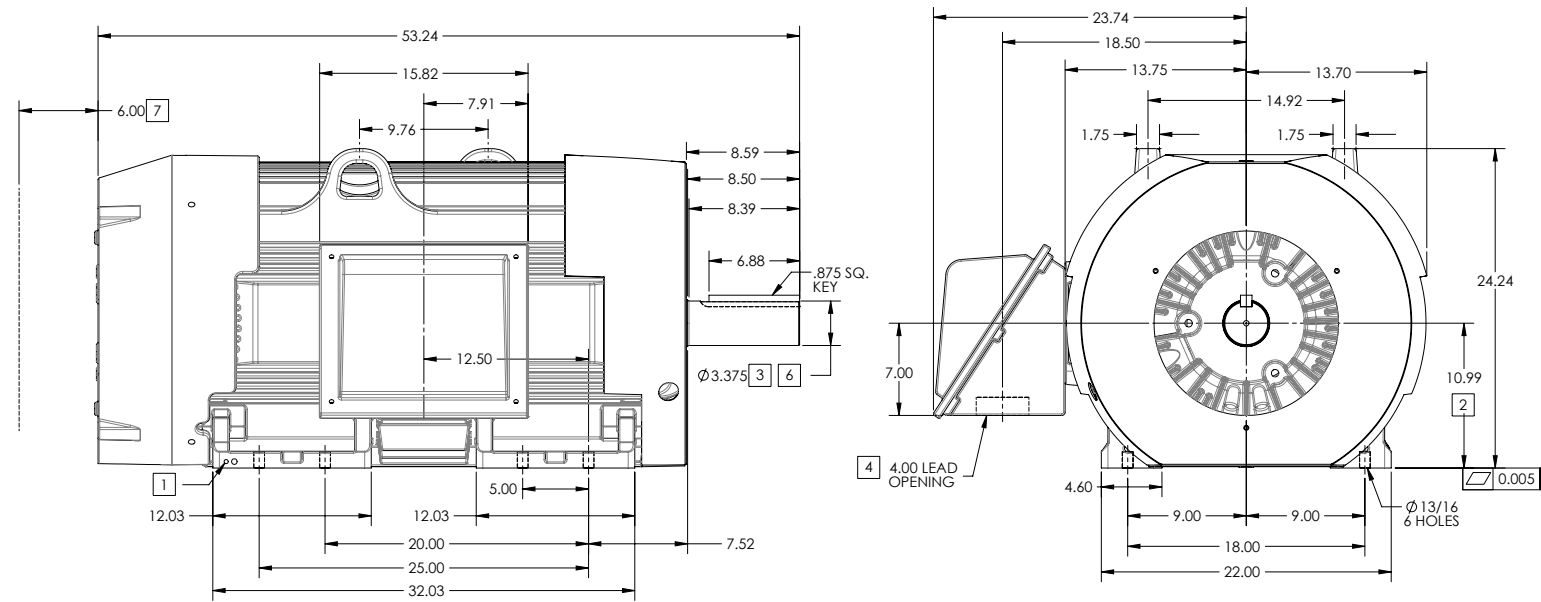
FRAME 449T ABOVE NEMA RATINGS (1800 RPM MAX)

COOLING: FAN COOLED

MOUNTING: FOOT

INCLUDES 447T FRAME MOUNTING HOLES

841XL ENCLOSURE ENHANCEMENT



1. GROUND HOLES QTY 1 1/2-13 TAP; QTY 1 3/8-16 TAP
2. VARIES +.00,-.06
3. VARIES +.00,-.001
4. ON STANDARD MOTORS THIS IS CONDUIT SIZE. ON XT AND CORROSION PROOF MOTOR THIS IS PIPE TAP.
5. MOTOR WEIGHTS MAY VARY BY 15% DEPENDING ON RATING.
6. SHAFT TIR = 0.0015 IN FOR BALL BEARING MOTORS AND 0.002 IN FOR ROLLER BEARING CONSTRUCTION
7. OBSTRUCTION MUST NOT ENCROACH ON AIR INLET

[5] WEIGHT (LBS): 3080

DRIVE END AIR DEFLECTOR IS ONLY INCLUDED WHEN NECESSARY.

DIMENSIONS ARE IN INCHES; SEE SHEET 2 FOR DIMENSIONS IN MILLIMETERS

CUSTOMER IS RESPONSIBLE FOR DETERMINING THAT MOTOR PERFORMANCE IS SUITABLE IN THE APPLICATION.

CONDUIT BOX LOCATED ON OPPOSITE SIDE WHEN F-2.
IF MOUNTING CLEARANCE DETAILS ARE REQUIRED, CONSULT FACTORY.

SHEET NUMBER
1 OF 2
617427-063

| | | | |
|---|-------------|------------------------------|------------------|
| REV. DESC: REMOVING SHAFT STRAIGHTING NOTES AT BOTTOM | | | |
| REV: B | VERSION: 02 | REVISED: 11-13-53 10/04/2014 | TDR: 00000874636 |
| MODEL NO. 617427-063 | | | |
| BY: RAGRA | | | |

BALDOR
G449T/447T STD - FOOTED - SIDE CENTER CB - 841XL

617427-063

DUTY MASTER ALTERNATING CURRENT MOTORS
SQUIRREL-CAGE INDUCTION

ENCLOSURE: TOTALLY ENCLOSED

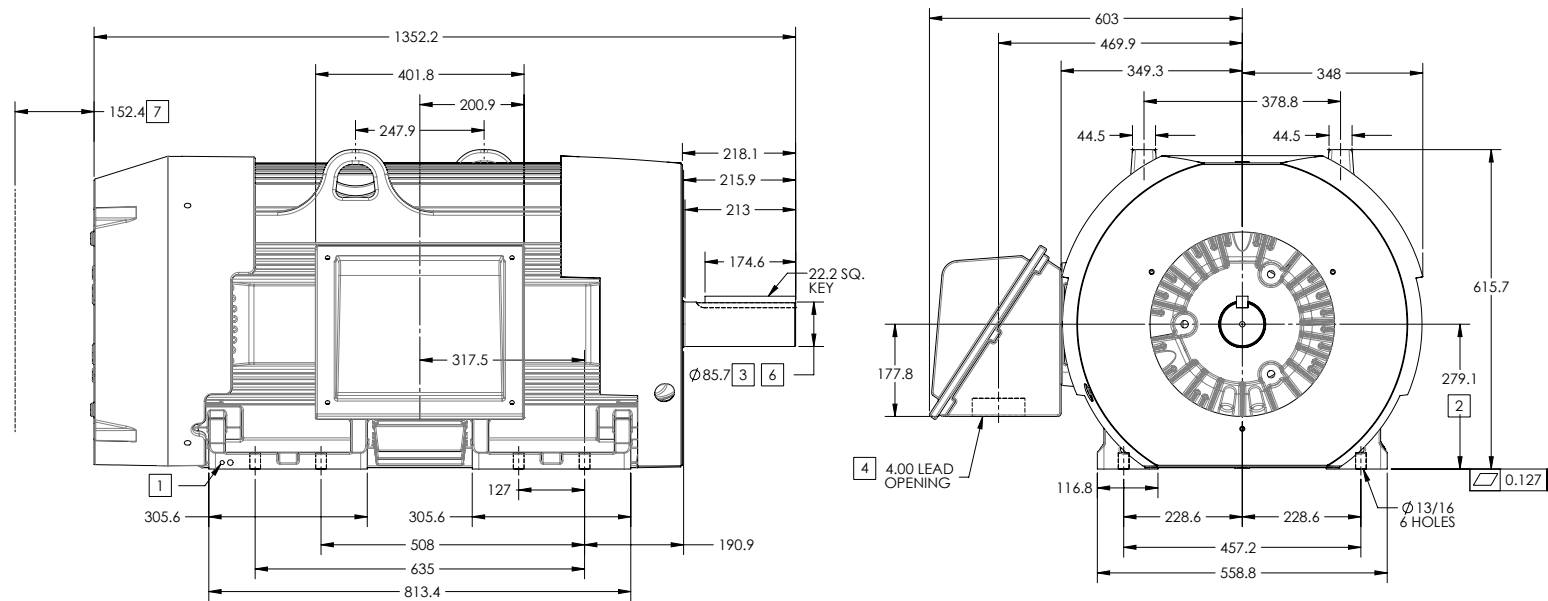
FRAME 449T ABOVE NEMA RATINGS (1800 RPM MAX)

COOLING: FAN COOLED

MOUNTING: FOOT

INCLUDES 447T FRAME MOUNTING HOLES

841XL ENCLOSURE ENHANCEMENT



1. GROUND HOLES QTY 1 1/2-13 TAP; QTY 1 3/8-16 TAP
2. VARIES +.00,-.06
3. VARIES +.00,-.001
4. ON STANDARD MOTORS THIS IS CONDUIT SIZE. ON XT AND CORROSION PROOF MOTOR THIS IS PIPE TAP.
5. MOTOR WEIGHTS MAY VARY BY 15% DEPENDING ON RATING.
6. SHAFT TIR = 0.038MM FOR BALL BEARING MOTORS AND 0.051MM FOR ROLLER BEARING CONSTRUCTION
7. OBSTRUCTION MUST NOT ENCR OACH ON AIR INLET

[5] WEIGHT (KGS): 1400

DRIVE END AIR DEFLECTOR IS ONLY INCLUDED WHEN NECESSARY.

DIMENSIONS ARE IN MILLIMETERS; SEE SHEET 1 FOR DIMENSIONS IN INCHES

CUSTOMER IS RESPONSIBLE FOR DETERMINING THAT MOTOR PERFORMANCE IS SUITABLE IN THE APPLICATION.

CONDUIT BOX LOCATED ON OPPOSITE SIDE WHEN F-2.
IF MOUNTING CLEARANCE DETAILS ARE REQUIRED, CONSULT FACTORY.

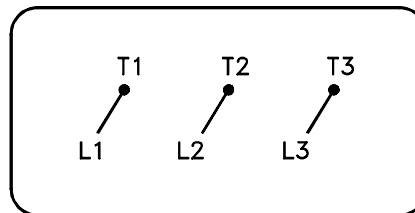
SHEET NUMBER
2 OF 2
617427-063

| | | |
|---|------------------------------|------------------|
| REV. DESC: REMOVING SHAFT STRAIGHTING NOTES AT BOTTOM | REVISED: 11-13-53 10/04/2014 | TDR: 00000874636 |
| REV: B | VERSION: 02 | |
| MODEL NO. 617427-063 | | |
| BY: RAGRA | | |

BALDOR
G449T/447T STD - FOOTED - SIDE CENTER CB - 841XL

416820-036

A-C MOTOR
CONNECTION DIAGRAM
STANDARD 3 LEAD CONNECTED



(N.P. 1575-BA)

416820-036

| | | |
|--------------------------------------|------------------------------|-------------------|
| REV. DESC: LOADED TO BUS, C/R 335225 | | |
| REV. LTR: - | VERSION: 00 | TDR: 000000538207 |
| FILE: \MGA\00000\682 | REVISED: 11:54:06 04/30/2010 | |
| MTL: - | BY: RAGRA | |

BALDOR

CONN DIAG - STANDARD 3 LEAD

SH 1 of 1

Marketing maintained PDF of MN408:

<http://www.baldor.com/support/Literature/Load.ashx/MN408?ManNumber=MN408>

Marketing maintained PDF of MN416:

<http://www.baldor.com/support/Literature/Load.ashx/MN416?ManNumber=MN416>