

# **BALDOR**® • ***RELIANCE***

## **Product Information Packet**

# **GDL3665T**

**5HP,1725RPM,1PH,60HZ,184TZ,0640LC,TEFC,F**

Part Detail							
Revision:	D	Status:	PRD/A	Change #:		Proprietary:	No
Type:	AC	Prod. Type:	0640LC	Elec. Spec:	06WGX784	CD Diagram:	CD0579
Enclosure:	TEFC	Mfg Plant:		Mech. Spec:	06K586	Layout:	06LYK586
Frame:	184TZ	Mounting:	F1	Poles:	04	Created Date:	03-23-2015
Base:	RG	Rotation:	R	Insulation:	F	Eff. Date:	02-04-2016
Leads:	2#12 A PH,2#16 B PH					Replaced By:	
Literature:		Elec. Diagram:					

Nameplate NP1279L											
CAT.NO.	GDL3665T										
SPEC.	06K586X784										
HP	5										
VOLTS	230										
AMP	21										
RPM	1725										
FRAME	184TZ				HZ	60			PH	1	
SER.F.	1.00				CODE	G		DES	L	CL	F
NEMA-NOM-EFF	82.5				PF	94					
RATING	40C AMB-CONT										
CC									USABLE AT 208V		
DE	6206				ODE	6205					
ENCL	TEFC				SN						

Parts List		
Part Number	Description	Quantity
SA299055	SA 06K586X784	1.000 EA
RA286033	RA 06K586X784	1.000 EA
OC3060F10SP	CYL OIL CAP 60MFD/370V	1.000 EA
EC1189C06SP	ELEC CAP, 189-227 MFD, 250V, 2.06D X 4.	1.000 EA
EC1216C06SP	ELEC CAP, 216-259 MFD, 250V, 2.06D X 4.	1.000 EA
ES5801	230/70A,L/LC,CVR,310CO,2.6D*4.4 ,4-7-42	1.000 EA
HW3201A05	3/8-16 EYEBOLT	1.000 EA
BE0049A17	ENCLOSURE BOX, 8X8X4,1.09 LD HL@6,(4) CA	1.000 EA
06GS1000	GASKET,CONDUIT BOX	1.000 EA
51XW2520A12	SCREW, HEX SER SLT HD, ZN, 1/4-20 X .75	4.000 EA
HA6003A06	CLAMP, CAPACITOR PLATED	2.000 EA
HA6053A01ZP	CLAMP, CAPACITOR 2" DIA, WHITE ZINC PLAT	1.000 EA
HA7071	2.50 LOOM CLAMP CAP CLAMP(SHAMROCK BOLT)	1.000 EA
51XF2520A08	SCREW, HEX SER SLT HD, ZN 1/4-20 X .50 L	6.000 EA
11XW1032G06	10-32 X .38, TAPTITE II, HEX WSHR SLTD U	1.000 EA
36EP1101A02	FR ENDPLATE, MACH	1.000 EA
HW5100A05	WVY WSHR F/205 & 304 BRGS	1.000 EA
36EP1100A14	EP PU 206 BRG NO GRSR W/SEAL	1.000 EA
HW4600B50SP	SEAL 1.156 X 1.874 X 0.250 SINGLE LIP DB	1.000 EA
HA3101A34	THRUBOLT- 1/4-20 X 10.375	4.000 EA
XY2520A12	1/4-20 HEX NUT, DIRECTIONAL SERRATIONS	4.000 EA
51XB1214A16	12-14X1.00 HXWSSLD SERTYB	1.000 EA
36FH4009A02	FAN COVER FOR VM7042T,PRIMER	1.000 EA
51XW1032A06	10-32 X .38, TAPTITE II, HEX WSHR SLTD S	3.000 EA

<b>Parts List (continued)</b>		
<b>Part Number</b>	<b>Description</b>	<b>Quantity</b>
HW2501E26	KEY, 1/4 SQ X 3.000	1.000 EA
HA7000A02	KEY RETAINER RING, 1 1/8 DIA, 1 3/8 DIA	1.000 EA
HW4600B36SP	V-RING SLINGER 1.188 X 1.690 X .24 VITON	1.000 EA
HA1005A03SP	SLINGER, OD 1.750, ID .938, 205 BRG	1.000 EA
85XU0407S04	4X1/4 U DRIVE PIN STAINLESS	2.000 EA
LB1115N	LABEL,LIFTING DEVICE (ON ROLLS)	1.000 EA
WD1000A15	3-520132-2 AMP FLAG (4M/RL NON-CANC/NON-	6.000 EA
MJ1000A02	GREASE, POLYREX EM EXXON (USe 4824-15A)	0.050 LB
36FN3000A01SP	EXFN, PLASTIC, 7.00 OD, .912 ID	1.000 EA
MG1025C02	WILKOFASST SG, 787.105, TAN	0.017 GA
LB1119N	WARNING LABEL	1.000 EA
LC0017A01	CONN LABEL-1 PHASE-SINGLE VOLT-REV ROT X	1.000 EA
NP1279L	ALUM FARM DUTY UL CSA CC	1.000 EA
36PA1001	PKG GRP, PRINT PK1017A06	1.000 EA
MN416A01	TAG-INSTAL-MAINT no wire (1200/bx) 11/14	1.000 EA
LB1417	LABEL CARTON 6X4 PERFORATED BLANK ROLLS	1.000 EA

**AC Induction Motor Performance Data**

Record # 53090 - Typical performance - not guaranteed values

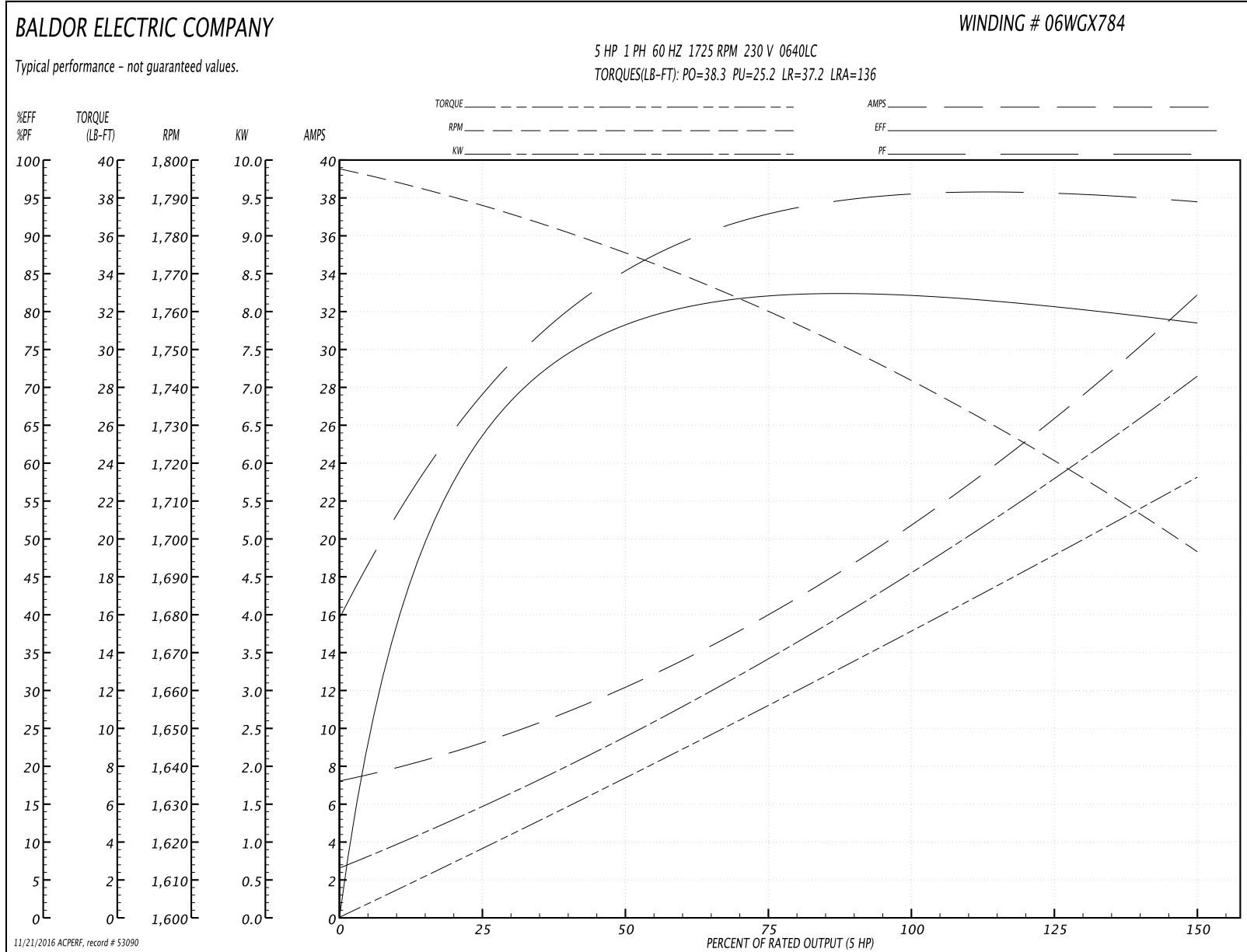
<b>Winding:</b> 06WGX784-R001	<b>Type:</b> 0640LC	<b>Enclosure:</b> TEFC
-------------------------------	---------------------	------------------------

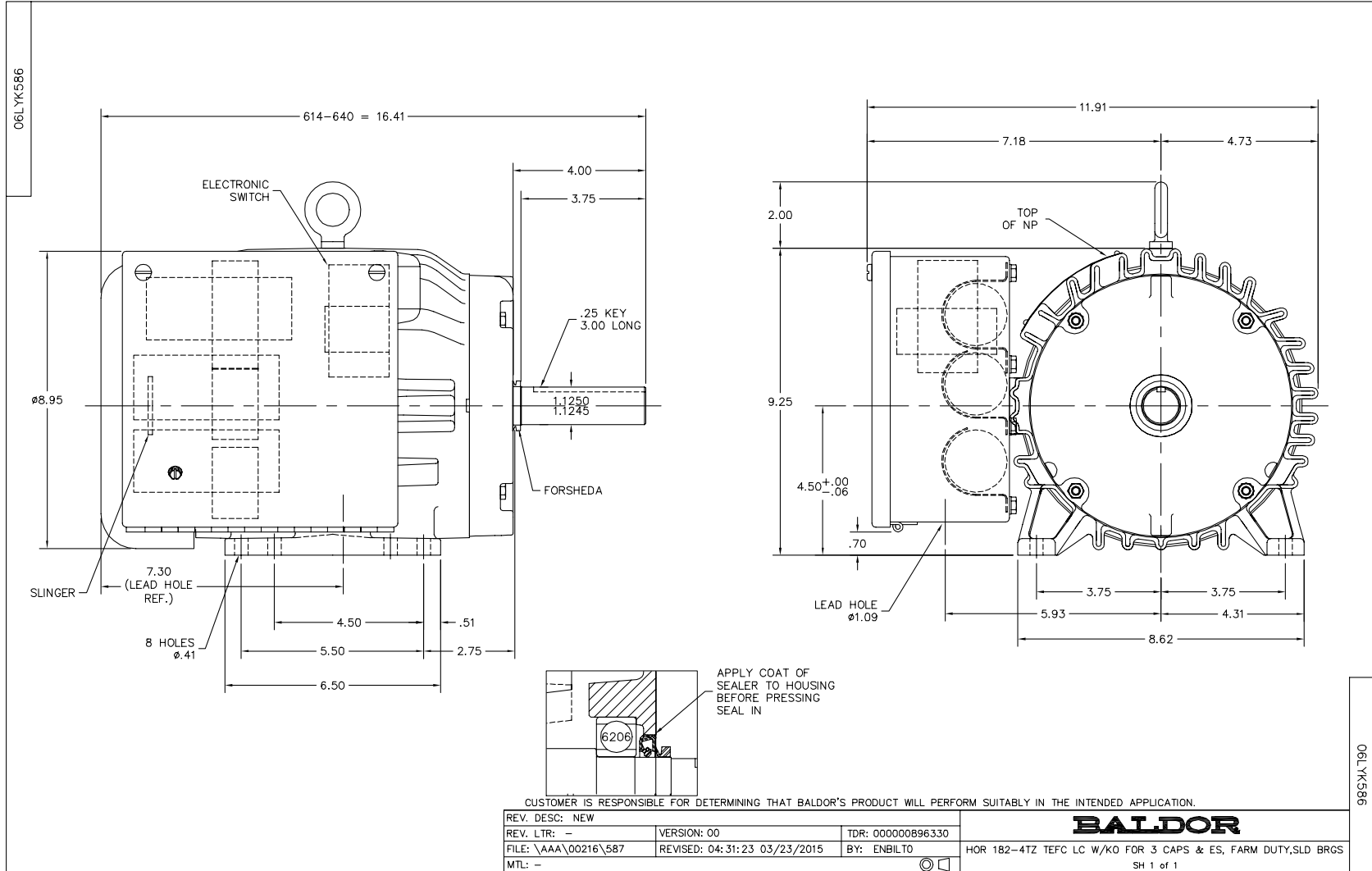
Nameplate Data				230 V, 60 Hz: Single Voltage Motor	
Rated Output (HP)	5			Full Load Torque	15.1 LB-FT
Volts	230			Start Configuration	direct on line
Full Load Amps	21			Breakdown Torque	38.3 LB-FT
R.P.M.	1725			Pull-up Torque	25.2 LB-FT
Hz	60	Phase	1	Locked-rotor Torque	37.2 LB-FT
NEMA Design Code	L	KVA Code	G	Starting Current	136 A
Service Factor (S.F.)	1			No-load Current	7.34 A
NEMA Nom. Eff.	82.5	Power Factor	94	Line-line Res. @ 25°C	0.44424 Ω A Ph 1.0182 Ω B Ph
Rating - Duty	40C AMB-CONT			Temp. Rise @ Rated Load	89°C

Load Characteristics 230 V, 60 Hz, 5 HP

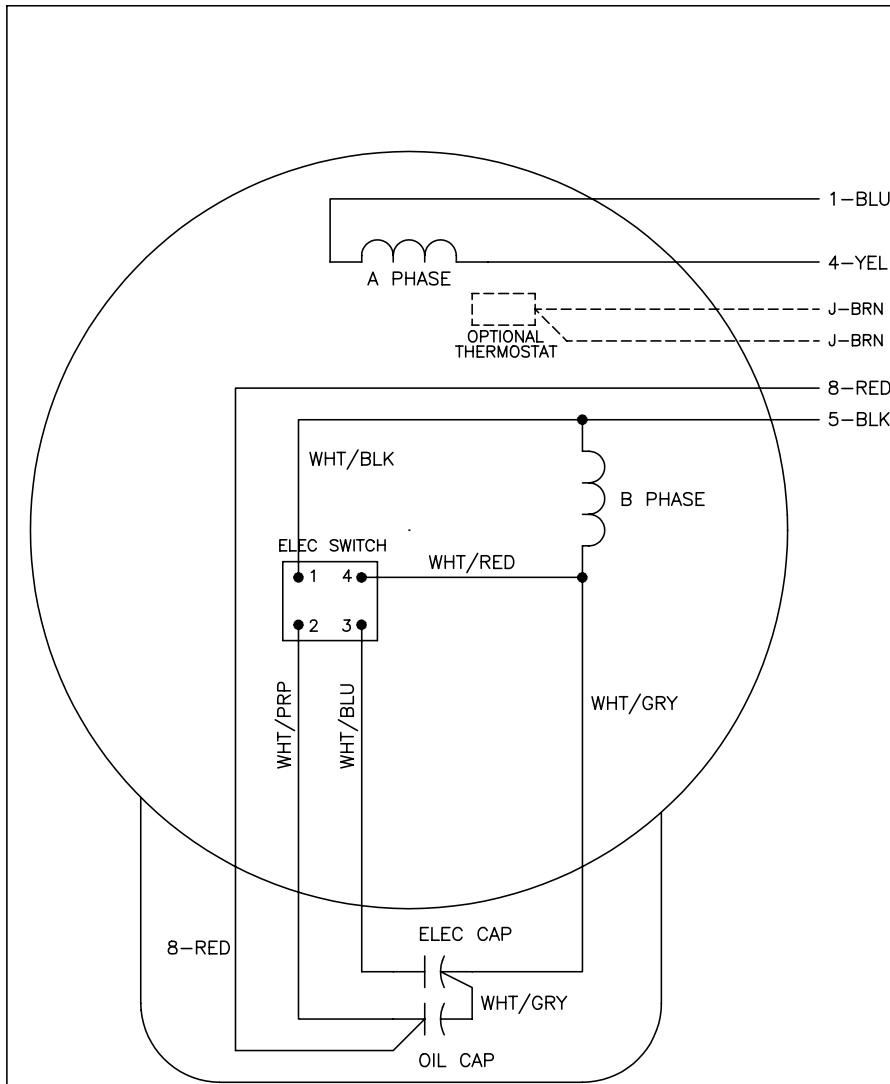
% of Rated Load	25	50	75	100	125	150
Power Factor	72	87	92	94	95	95
Efficiency	61.2	77.2	81.9	82.6	81.2	77.9
Speed	1787.1	1773.8	1759.3	1743.3	1723.1	1695
Line amperes	9	12.2	16.2	20.8	26.1	32.9

Performance Graph at 230V, 60Hz, 5.0HP Typical performance - Not guaranteed values





CD0579



	LINE A	LINE B
STD	1,8	4,5
OPP	1,5	4,8

NOTES:

1. STANDARD ROTATION IS CCW FACING END OPPOSITE SHAFT EXTENSION.
2. OPTIONAL THERMOSTAT IS PROVIDED WHEN SPECIFIED.
3. MULTIPLE CAPACITORS ARE CONNECTED IN PARALLEL UNLESS OTHERWISE SPECIFIED.
4. USE STEARNS ELECTRONIC START SWITCH OR EQUIVALENT.
5. START SWITCH MAY BE LOCATED ON THE JUNCTION BOX, IN THE CAPACITOR BOX, IN THE ENDPLATE, OR SEPERATE.
6. LEAD COLORS ARE OPTIONAL. LEADS MUST ALWAYS BE NUMBERED AS SHOWN.

REV. DESC: REVISE TO SHOW OPTIONAL COLORS			
REV. LTR: C	BY: JLP	REVISED: 04/26/99 4:23	TDR: 0179909
6/9000		FILE: AAA00008040	MDL: -
		MTL: -	

**BALDOR ELECTRIC Co.**

TYPE LC, SV, REV, 4 LEADS, ELECTRONIC SWITCH

CD0579